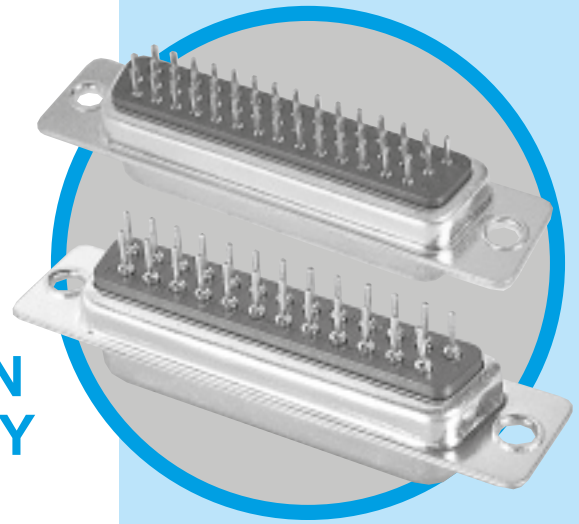


# SD

D'Sub connectors - Stamped and Formed Contacts

## STRAIGHT PCB TERMINATION STANDARD and HIGH DENSITY



### Specifications

- Connector interface according to: MIL C24308 - NFC 93425-HE5
- **UL File:** E232356

MAIN CHARACTERISTICS

Materials and Platings	
<b>Shells</b>	Steel, tin over nickel plating
<b>Insulator</b>	Glass-filled thermoplastic, UL 94V-0
<b>Contacts</b>	Brass, selected gold in mating area; 2.54µm (100 µ") min.tin on termination area over 1.27µm (50µ") min.nickel
<b>Rear insert</b>	Brass, 2.54µm (100µ") min.nickel plated
<b>Boardlock</b>	Brass, 2.54µm (100µ") min.nickel plated
<b>Screwlock</b>	Brass, 2.54µm (100µ") min.nickel plated (removable)

Electrical Data	
<b>Current rating</b>	Standard Density:3A High Density:3A
<b>Voltage rating</b>	250V AC/ rms 50Hz
<b>Withstanding voltage</b>	1000V AC/rms 50Hz for one minute
<b>Insulation resistance</b>	5000MΩ at 500V DC
<b>Contact resistance</b>	20mΩ max innitally

Climatic Data	
<b>Operating temperature</b>	-55°C to +105°C
<b>Salt spray</b>	24 hours

### Mechanical Data

- Single contact insertion force** 0.54kg (1.19lb) max
- Single contact withdrawal force** SD : 0.06kg (0.13lb) min  
HD : 0.02kg (0.044lb) min

**Mating and unmating force**  
Unit: kg ( lb)

No. of Cts		SD		HD	
SD	HD	Mate (max)	Unmate (min)	Mate (max)	Unmate (min)
9	15	3.05 (6.74)	0.36 (0.79)	3.81 (8.42)	0.52 (1.14)
15	26	5.09 (11.24)	0.46 (1.01)	5.95 (13.16)	1.05 (2.32)
25	44	8.44 (18.66)	0.81 (1.8)	9.26 (20.46)	1.37 (3.02)
37	62	12.51 (27.65)	1.1 (2.47)	13.48 (29.78)	1.76 (3.88)
50	78	14.65 (32.38)	1.6 (3.56)	15.82 (34.96)	2.02 (4.46)

- Standard plating thickness**
- Gold flash
  - 0.38 µm (15µ") Gold
  - 0.76 µm (30µ") Gold

DESCRIPTION

The Amphenol SD series features precision formed contacts, and insulator with closed entry contacts cavities. This series gives you Amphenol's high standards of quality and reliability to meet all of your commercial requirements.

*Economical  
straight PCB  
mount connectors*

APPLICATIONS

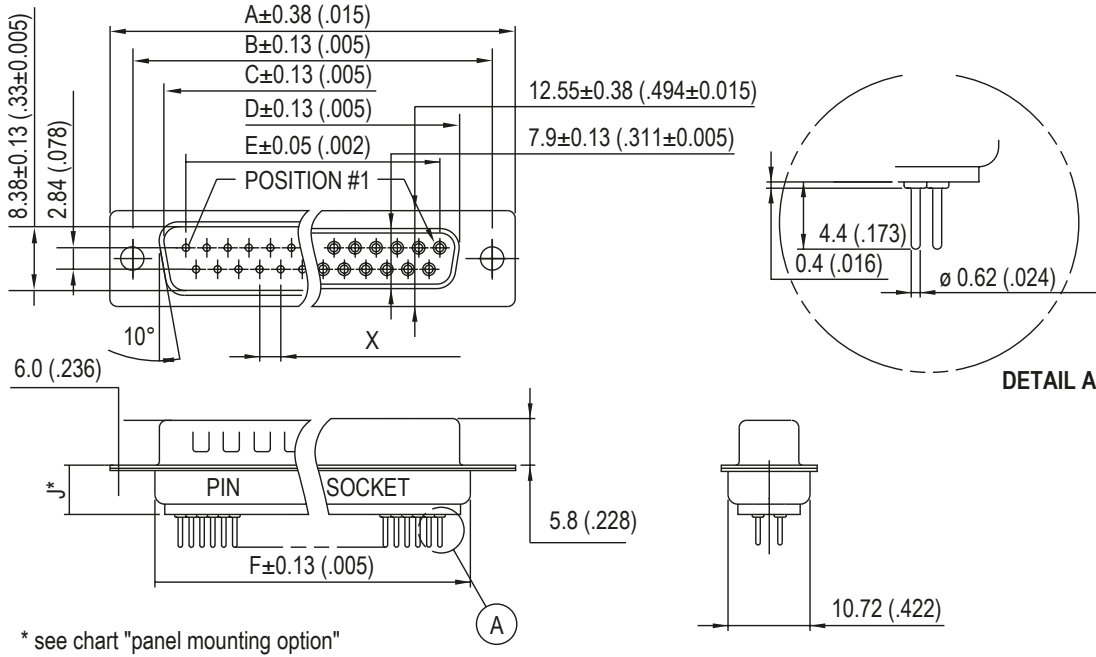
- Industrial
- Telecom
- Any industry standard I / O connections

SD / E6

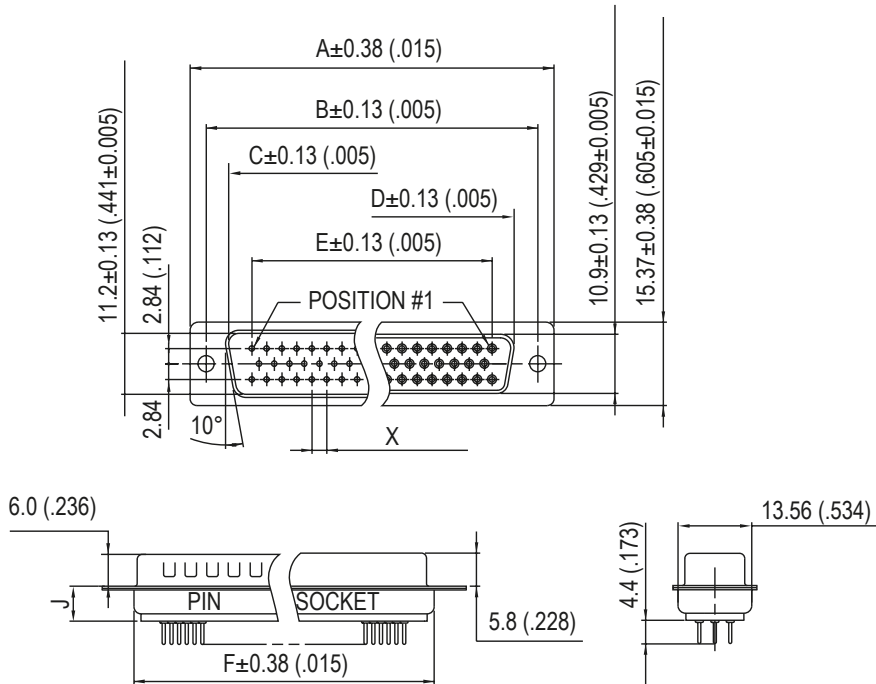


**Amphenol**

# Standard Density

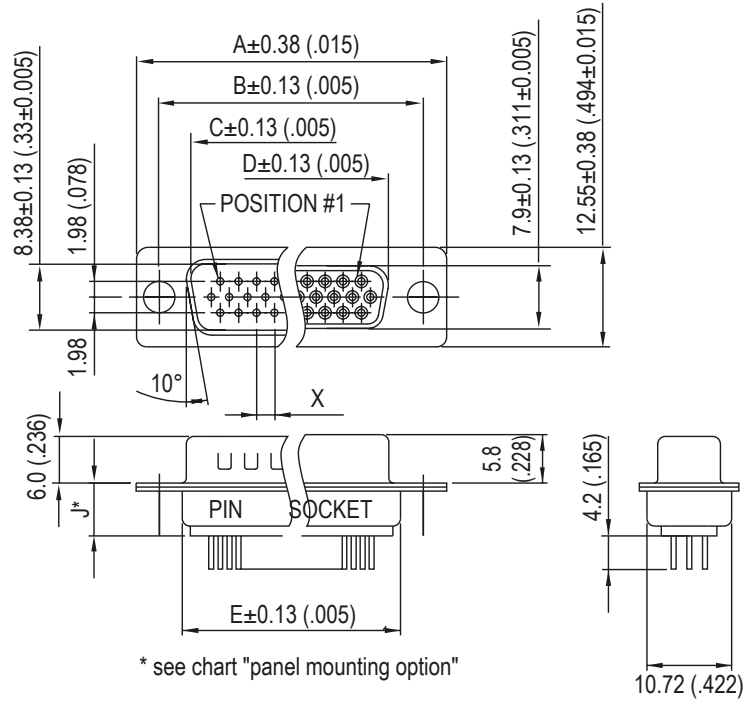


Nb OF CONTACTS	DIMENSIONS mm (inch)						
	A	B	C	D	E	F	X
9	30.84 (1.21)	24.99 (.98)	16.92 (.67)	16.24 (.64)	11.09 (.44)	19.28 (.76)	2.77 (.109)
15	39.24 (1.54)	33.32 (1.31)	24.7 (.972)	24.56 (.97)	19.39 (.76)	27.51 (1.08)	2.77 (.109)
25	53.04 (2.09)	47.04 (1.85)	38.96 (1.53)	38.38 (1.51)	33.24 (1.31)	41.30 (1.63)	2.77 (.109)
37	69.32 (2.73)	63.50 (2.50)	55.42 (2.18)	54.76 (2.16)	49.86 (1.96)	57.71 (2.27)	2.77 (.109)
50	67 (2.64)	61.11 (2.41)	52.86 (2.08)	52.34 (2.06)	44.32 (1.75)	55.3 (2.18)	2.77 (.109)

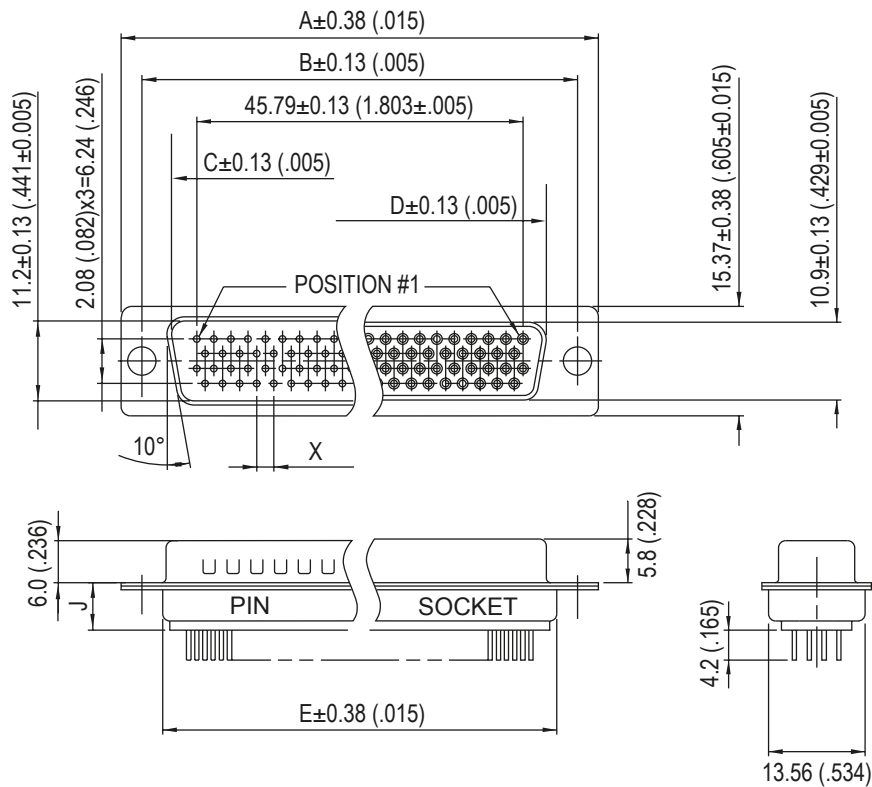


50 CONTACTS

# High Density

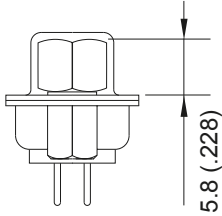


Nb OF CONTACTS	DIMENSIONS mm (inch)					
	A	B	C	D	E	X
15	30.84 (1.21)	24.99 (.98)	16.92 (.67)	16.24 (.64)	19.28 (.76)	2.29 (.090)
26	39.24 (1.54)	33.32 (1.31)	25.25 (.994)	24.56 (.97)	27.51 (1.08)	2.29 (.090)
44	53.04 (2.09)	47.04 (1.85)	38.96 (1.53)	38.38 (1.51)	41.30 (1.63)	2.29 (.090)
62	69.32 (2.73)	63.50 (2.50)	55.42 (2.18)	54.76 (2.16)	57.71 (2.27)	2.41 (.095)
78	67 (2.64)	61.11 (2.41)	52.86 (2.08)	52.34 (2.06)	55.3 (2.18)	2.41 (.095)

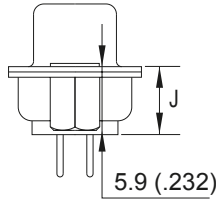


78 CONTACTS

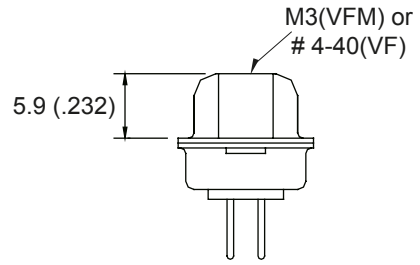
## Panel mounting option



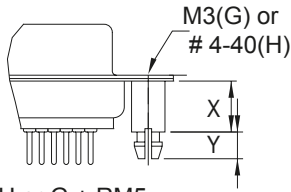
H + VF or G + VFM  
Front Female Screwlock



H or G  
Threaded Rear Insert

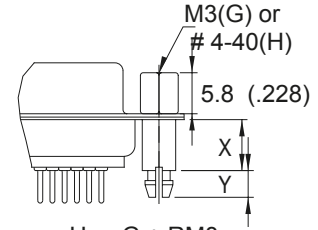


VF or VFM  
Fixed Front Screwlock



H or G + RM5  
Standoff + Boardlock

	RM5 RM8	RM5G RM8G
X	6.0(.236)	12.7(.500)
Y	4.2(.165)	3.2(.126)
J	5.7(.224)	10.1(.397)



H or G + RM8  
Front Screwlock with Standoff  
+ Boardlock

## Straight PCB Connector - How to order

Contact plating

L

RoHS Compliant

Flash	<b>77</b> <b>717</b>	Tinned shell for receptacle Tinned shell + dimples for Pin connector
0.38µm (15µ")	<b>177</b> <b>777</b>	Tinned shell for receptacle Tinned shell + dimples for Pin connector

### Series:

SD = Standard density  
HD = High density

### Shell size:

	SD	HD
E =	09	15
A =	15	26
B =	25	44
C =	37	62
D =	50	78

### Rear mounting options:

H = 4-40 rear insert  
G = M3 rear insert  
\*H or G required with RM5 or RM8

OL2

C309

### Plating option:

valid only for 0.76µm (30µ")  
part numbers to be written  
as follow:

or 77.....C309  
717.....C309

### Front mounting options:

Blank = Ø3.05 mm rivet  
RM5 = Rear threaded standoff +  
boardlock\*  
RM8 = Front screwlock with  
standoff + boardlock\*  
VF = 4-40 Front screwlock\*  
VFM = M3 Front screwlock\*

### Termination:

Straight, for PCB mount

### Contact type:

P = Pin  
S = Socket

### Configuration:

09,15,25,37,50 for SD series  
15,26,44,62,78 for HD series

Examples: L 717 SD E H 09 P OL2 RM5 C309  
L 77 SD E 09 S OL2 VF

**For special request, please consult factory**

## X-ON Electronics

Largest Supplier of Electrical and Electronic Components

*Click to view similar products for [D-Sub High Density Connectors](#) category:*

*Click to view products by [Amphenol](#) manufacturer:*

Other Similar products are found below :

[97-3250-11](#) [163A16809X](#) [163A17089X](#) [164A17199X](#) [K86X-AD-26S](#) [242A25680X](#) [L717HDB44POL2R210](#) [L717HDEH15POL2](#)  
[L777HDE15P](#) [L77HDE15SC309](#) [163A16759X](#) [163A16839X](#) [163A16989X](#) [163A17079X](#) [164A17329X](#) [164A18219X](#) [241A16440X](#)  
[241A16550X](#) [241A16680X](#) [241A20810X](#) [241A25740X](#) [CT25-44P](#) [MDBE15PE766](#) [L177HDE15SOL2RM23](#) [L177HRC62S](#)  
[L177HRC62SVFM](#) [L177HRCG62S](#) [L717HDEG15POL2RM5](#) [L77HDA26SVF](#) [L77HDE15SD1CO](#) [L77HDEH15SOL2RM832](#) [443895-3](#)  
[106698-1](#) [280-012K2C](#) [L177HRB44S](#) [164A17039X](#) [09562004701510](#) [241A17960X](#) [164A18269X](#) [280-019S1S9MEN](#) [L777HDEG15P](#) [280-](#)  
[018P3S25MEGN](#) [206504-2](#) [2057140-1](#) [C115370-6002](#) [DFMA104SNMBFR172FR022](#) [HDC9F200E2S](#) [L717HDAG26POL2RM8](#)  
[241A28180X](#) [163A16749X](#)