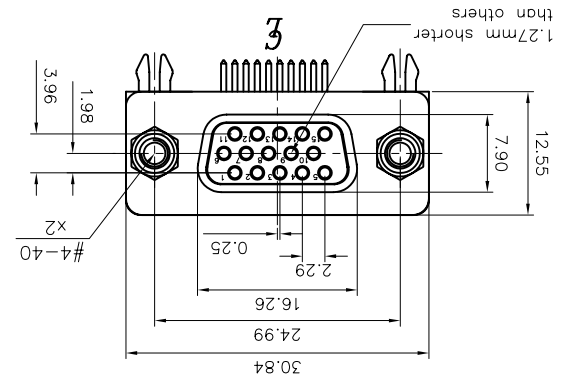
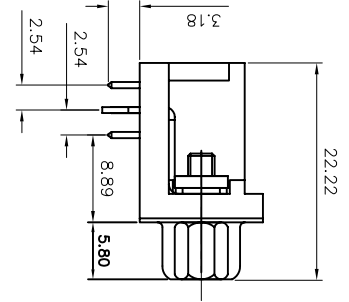
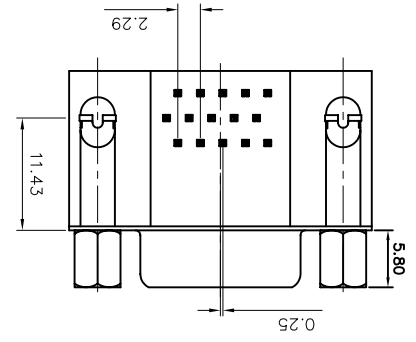
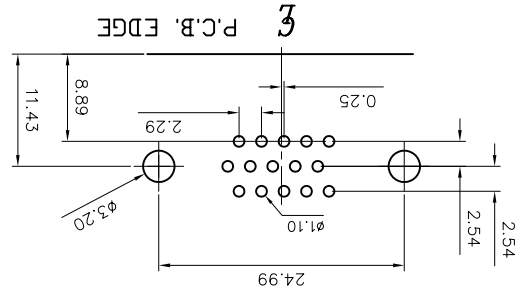


This document is the property of Amphenol Corporation and is delivered on the express condition that it is not to be copied, reproduced or used, in whole or in part, for manufacture or sale by anyone other than Amphenol. Amphenol Corporation without the prior consent, at that no right is granted to disclose or to use any information in this document.

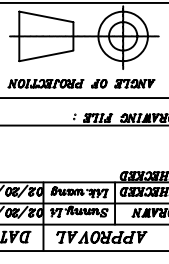


# Customer drawing

RECOMMENDED P.C.B. LAYOUT  
(TOLERANCE +/-0.03)



UNLESS OTHERWISE SPECIFIED	
TOLERANCES	METRIC
	U.S.
	METRIC
DRAWN Sumy, LA 02/20/08	
CHECKED Lfk, wang 02/20/08	
TITLE	
DRAWING FILE :	
FOR MATERIALS AND FINISHES	
REMOVE SHARP EDGES	
DIMENSIONS	
INCHES	
MM	



SIZE	DRAWING NO.	SCALE	N/A	SHEET 1 OF 1
A4	C L77HD E15 S D1 CH 4F VGA			
REV.	1			

**PRODUCT CODE**

L 77 HD E 15 S D1 CH 4F VGA

- L: RoHS Compliance
- 77: tinned shell for receptacle
- E: Shell Size
- 15: Configuration
- S: Female
- D1: Contact type
- CH: Boardlocks
- 4F: P.C.B Locking type: Grounding Tab. +
- VGA: 9th less than 1.27mm, blue
- 4=Front screw 4-40 mounting options

**D-SUB TECHNICAL DATA**

**SHELL :** Steel, 100u" min. tin over 50u" min nickel

**BODY :** Glass filled thermoplastic.

**CONTACTS :** Flame retardant to UL94 V-0 color Blue  
Copper alloy  
gold flash plating on mating area

**BOARDLOCK :** Brass, 100u" tin over 50u" min nickel  
Brass, 50u" min. nickel

**ELECTRICAL :** Voltage rating 600 V Rms to 50 Hz  
Current rating 3.0 A  
Withstanding Voltage >1000 V Rms to 50 Hz for one minute  
Insulation resistance >5000 M Ohms  
Contact resistance 20 mOhms max.

**CLIMATIC :** Temperature range -55 °C up to 125°C  
Amphenol logo

**MARKING :**

SYM	ECN	DESCRIPTION	DATE	APPROVED
1		New release	01/20/10	IP

## X-ON Electronics

Largest Supplier of Electrical and Electronic Components

*Click to view similar products for [D-Sub High Density Connectors](#) category:*

*Click to view products by [Amphenol](#) manufacturer:*

Other Similar products are found below :

[1484349-1](#) [163A16769X](#) [163A16809X](#) [163A17089X](#) [164A17199X](#) [164A17209X](#) [164A17479X](#) [164A18209X](#) [17BH-044S-AA110](#) [K86X-AD-26S](#) [KF66X-A26P-NJ](#) [KF66X-E15P-N](#) [241A17320X](#) [242A18390X](#) [242A25740X](#) [L717HDB44POL2R210](#) [L717HDCH62POL2RM5](#) [L717HDEH15POL2](#) [L777HDE15P](#) [L77HDC62S](#) [L77HDE15SC309](#) [163A16779X](#) [163A16839X](#) [163A17049X](#) [163A17079X](#) [164A17309X](#) [164A17329X](#) [164A18219X](#) [241A16440X](#) [241A16550X](#) [241A16680X](#) [241A17390X](#) [241A20810X](#) [241A25740X](#) [CT25-44P](#) [K66X-E15S-N30](#) [K86X-BA-44S](#) [K86X-ED-15S-BR15](#) [K86X-ED-15SK](#) [L177HDE15SOL2RM23](#) [L177HRC62S](#) [L177HRC62SVFM](#) [L177HRCG62S](#) [L717HDBH44POL2RM5](#) [L717HDEG15POL2RM5](#) [L77HDA26SVF](#) [L77HDE15SD1CO](#) [L77HDEH15SOL2RM832](#) [DAMA-15S-WS](#)  
[443895-3](#)