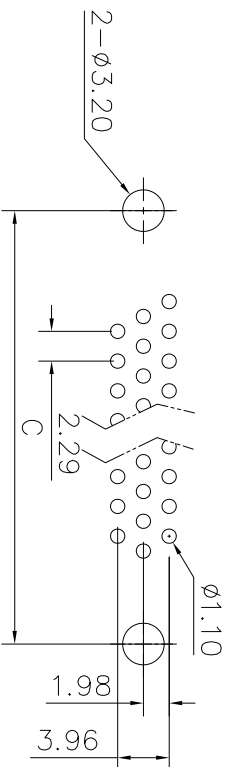
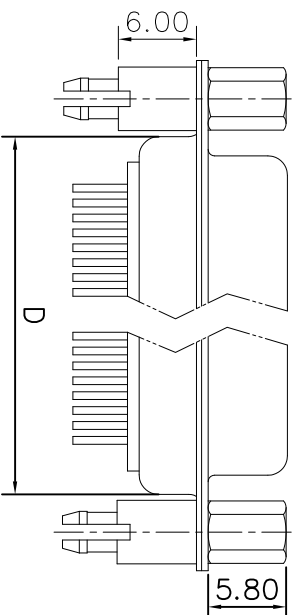
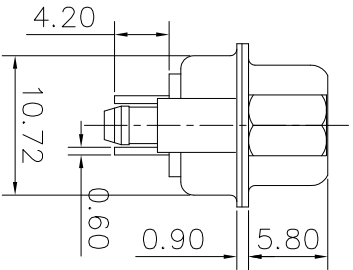
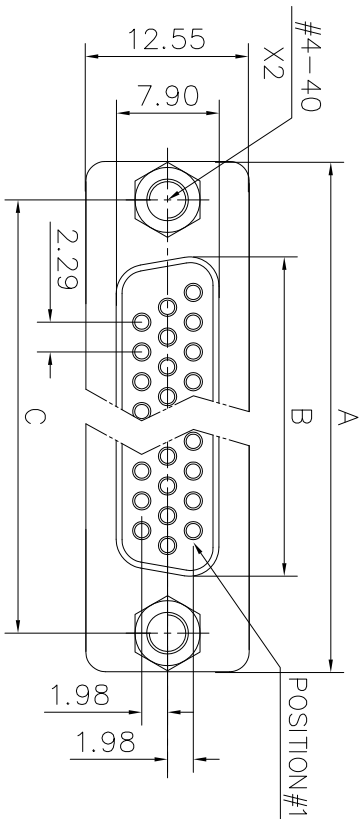


This document is the property of Amphenol Corporation and is addressed to the specific customer. It is not to be reprinted, reproduced or used, in whole or in part, without the prior consent of Amphenol Corporation. Amphenol Corporation will not be held responsible for any errors or omissions in this document or to use any information in this document.



RECOMMENDED P.C.B LAYOUT
(TOLERANCE +/-0.03)

DIM. S	A	B	C	D
SHELL	A	B	C	D

15	30.84	16.24	24.99	19.28
26	39.24	24.56	33.32	27.51
44	53.04	38.38	47.04	41.30
62	69.32	54.76	63.50	57.71

Customer drawing

REVISONS		DATE	APPROVED
1	SWM EGN	04/14/08	

D-SUB TECHNICAL DATA

SHELL : Steel 100u" min tin over 50u" min nickel
BODY : Glass filled thermoplastic.
 Flame retardant to UL94 V-0 Color Black

CONTACTS : Brass
 Gold flash over 50u" min nickel on mating area
 100u" min tin over 50u" min nickel on solder area

BOARDLOCK : Brass. 100u" min tin over 50u" min nickel

SCREWLOCK: Brass. 50u" min nickel

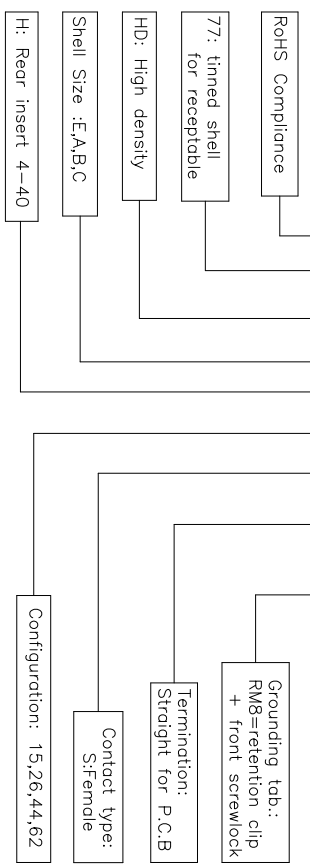
ELECTRICAL : Voltage rating 250 V Rms to 50 Hz
 Current rating signal contacts 3A
 Withstanding Voltage >1000 V Rms to 50 Hz for one minute
 Insulation resistance >5000 M Ohms
 Contact resistance 20 mOhms max.

CLIMATIC : Temperature range -55 °C up to 125°C

MARKING : Amphenol...(Series No.)
 Commercial reference
 Manufacturing date

PRODUCT CODE

L77 HD X H XX S OL2 RM8



UNLESS OTHERWISE SPECIFIED		APPROVAL		DATE	
TOLERANCES	METRIC	DRAWN	DATE	04/14/08	
U.S.	0.30	Cheung	CHKD	04/14/08	
	0.20		CHECKED		
.X	+/-	DRAWING FILE :			
.XX	+/-	ANGLE OF PROJECTION			
FRACTIONS +/-	/	SEE MATERIALS AND FINISHES			
ANGLES +/-	2'	REMOVE SHARP EDGES			
DIMENSIONS		DIMENSIONS		DIMENSIONS	
U.S.		INCHES		MM	
METRIC		MM		MM	

TITLE		SIZE	DRAWING NO.	REV.
Amphenol		A4	C L77HDXXXXSOL2RM8	1
Stamped and formed connector, HD series		SCALE	NONE	SHEET 1 OF 1

X-ON Electronics

Largest Supplier of Electrical and Electronic Components

Click to view similar products for [D-Sub High Density Connectors](#) category:

Click to view products by [Amphenol](#) manufacturer:

Other Similar products are found below :

[97-3250-11](#) [163A16809X](#) [163A17089X](#) [164A17199X](#) [K86X-AD-26S](#) [242A25680X](#) [L717HDB44POL2R210](#) [L717HDEH15POL2](#)
[L777HDE15P](#) [L77HDE15SC309](#) [163A16759X](#) [163A16839X](#) [163A16989X](#) [163A17079X](#) [164A17329X](#) [164A18219X](#) [241A16440X](#)
[241A16550X](#) [241A16680X](#) [241A20810X](#) [241A25740X](#) [CT25-44P](#) [MDBE15PE766](#) [L177HDE15SOL2RM23](#) [L177HRC62S](#)
[L177HRC62SVFM](#) [L177HRCG62S](#) [L717HDEG15POL2RM5](#) [L77HDA26SVF](#) [L77HDE15SD1CO](#) [L77HDEH15SOL2RM832](#) [443895-3](#)
[106698-1](#) [280-012K2C](#) [DBMV13H3SNA197](#) [L177HRB44S](#) [164A17039X](#) [09562004701510](#) [241A17960X](#) [164A18269X](#) [280-019S1S9MEN](#)
[L777HDEG15P](#) [280-018P3S25MEGN](#) [206504-2](#) [2057140-1](#) [C115370-6002](#) [DFMA104SNMBFR172FR022](#) [HDC9F200E2S](#)
[L717HDAG26POL2RM8](#) [241A28180X](#)