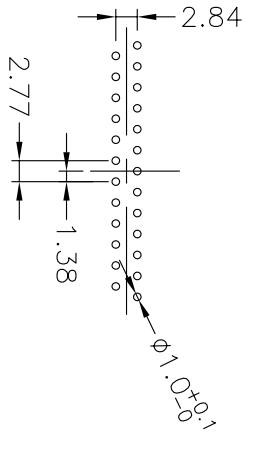
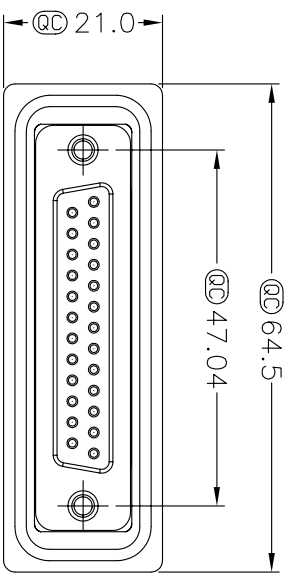
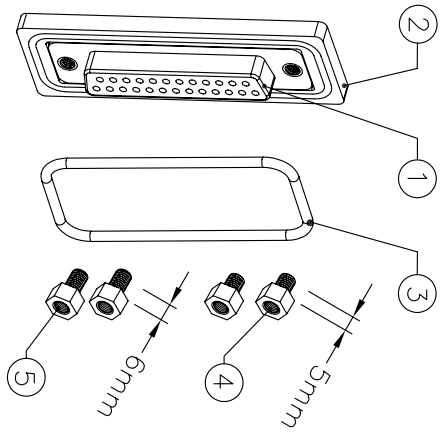
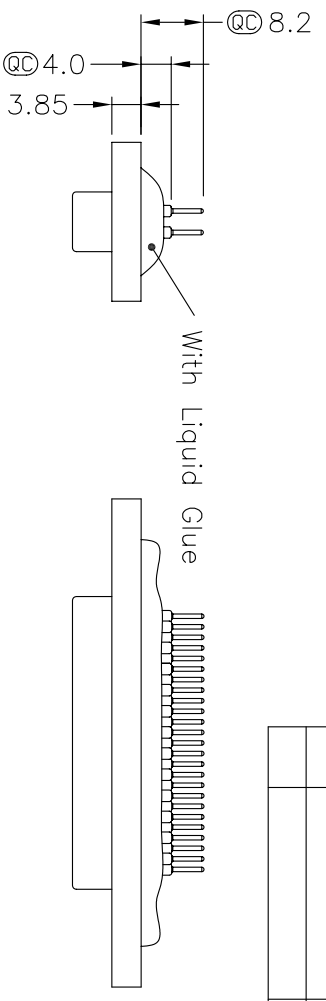


REV.	ECN NO.	DATE	SIGN	DESCRIPTION



25Pin Connector PCB Pin Layout



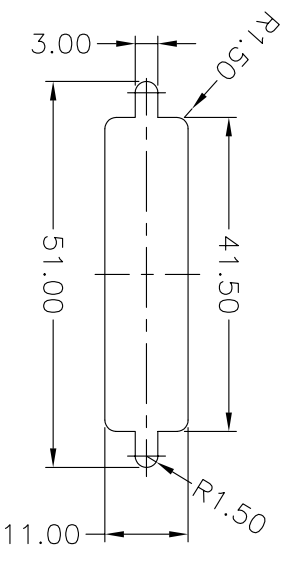
⚠ Warning! Drawings & Specifications Are Subject To Change Without Notification

LTW/SDB-25PFFP-SL 7001	LTW/SDB-25PMMP-SL 7001
LTW/SDB-25PFFP-SL 8001	LTW/SDB-25PMMP-SL 8001
P13	P1
P1	P13
P25	P14
P14	P25

Pin Assignments Front View

- Note:
1. Materials
  - ① Connector : D-SUB 25Pin, Pin: Brass,Gold Flash
  - ② Plastic Jacket : Nylon+Glass Filled
  - ③ Ring : Silicone
  - ④⑤ Screw : Brass,Nickel Plated
2. ⓄⓄ Important Dimension.

Panel Thickness  
 Screw L=5.0 For Panel Thickness Under 1.2mm  
 Screw L=6.0 For Panel Thickness Between 1.2~2.0mm



Recommended Panel Cut-Out

UNIT : mm	TITLE	SCALE	REV.	SIZE	SHEET	OF
TOLERANCE	D-SUB For Panel Mount, 25Pin,PCB Type 180°	1:1	A	A4	1	1
.X ±0.25						
.XX ±0.1						
.XXX ±0.05						
ANGLES ±1°						

**LTW**  
 亮泰企業股份有限公司

ITEM NO	DWG NO	CUSTOMER	DRAWN BY	CHECKED BY	APPROVED BY	DATE
	LTW/SDB-25PXXP-SL X001		Ju Xiao Fang			2004/07/16

## X-ON Electronics

Largest Supplier of Electrical and Electronic Components

*Click to view similar products for [amphenol manufacturer](#):*

Other Similar products are found below :

[CTV06RGQF-17-52P](#) [CTVPS00RGF-23-6P-LC](#) [JTPQ00RT-16-35P\(453\)](#) [GC835TY2S](#) [CF-509621-29P](#) [BF8-1218-31SV-Y70](#) [TVP00RGW-23-6SA\(LC\)](#) [RNJ27CI1535P014](#) [10-553998-139](#) [21-033388-031](#) [10-507142-843](#) [GTS02R20-15P-025-116](#) [GTS06G-32-7S](#) [GTC06-36-78PX-023](#) [ACC02E28-51S-003-B30-LC](#) [TV06RL-13-35SD-LC](#) [TV06RL-13-35SD](#) [TV06RL-13-98SD-LC](#) [TV06RL-13-98SD](#) [GTC08AF32-15SX-B30-LC](#) [GTC06G32-76PZ](#) [TVP00RW-23-53AD](#) [100-007-213-002-001](#) [5M30-61](#) [JT07RT-22-14PB-453](#) [FSPP-103-00-004](#) [360031](#) [10-037090-161](#) [10-541504-001](#) [10-580902-409](#) [TV97RW-9-9S\(S15\)](#) [TVPS00RGF-9-5P-LC](#) [TVPS00RGF-9-5PA-LC](#) [TVP00RGQW-21-75P-LC](#) [TV06RW-25-90AE](#) [97-3108B16S-5PW-417](#) [PT06J20-24SW](#) [97-3108B16S-4PY-417](#) [97-3108B16S-4PX-417](#) [97-3108B16S-5PY-417](#) [97-3108B16S-4PW-417](#) [CS-DSDMDB37MF-025](#) [97-3108B16S-5PZ-417](#) [TV06RW-25-46AE](#) [TVS07RF-21-16AA](#) [TVS07RF-21-39BA](#) [60261626SNCOND1](#) [SE00TVW09](#) [GTS01-22-22PX-025-116](#) [GTS01-22-22P-025-116](#)