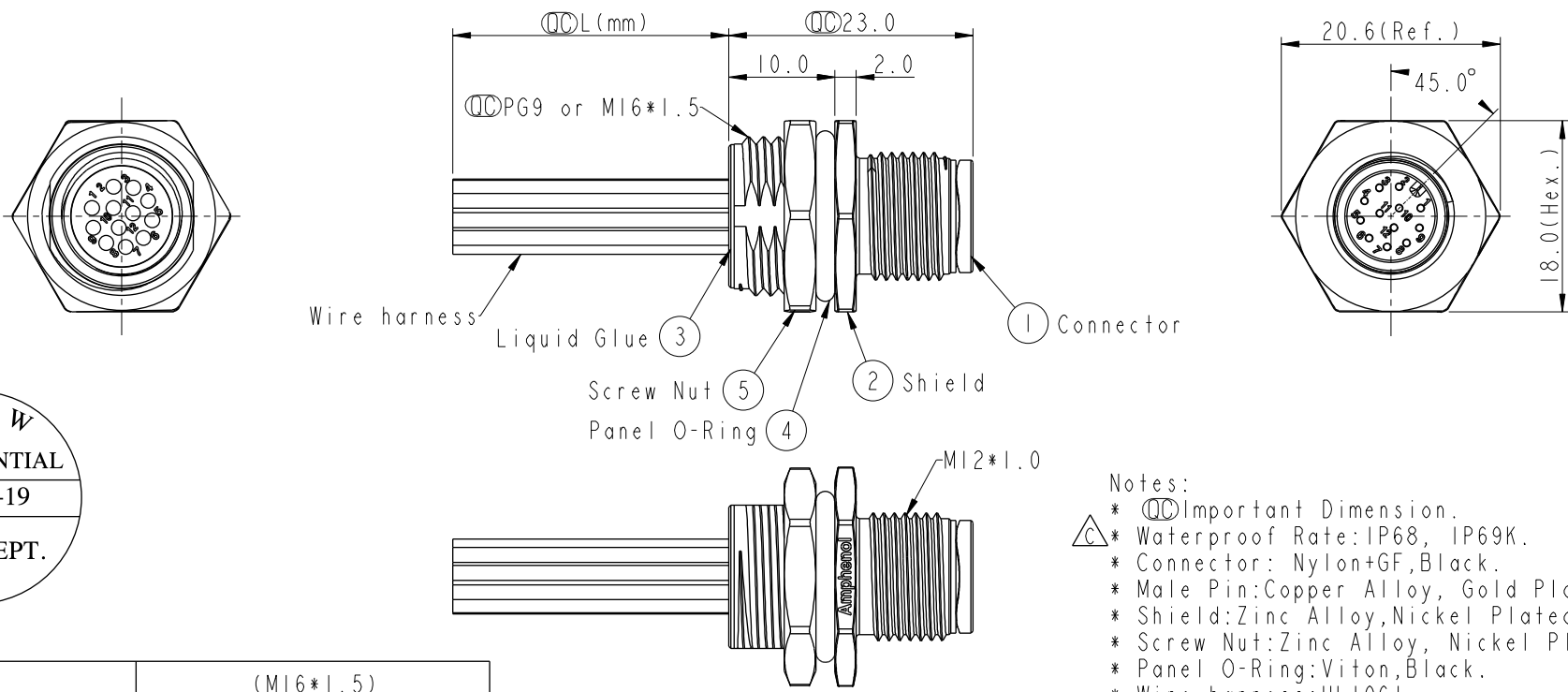


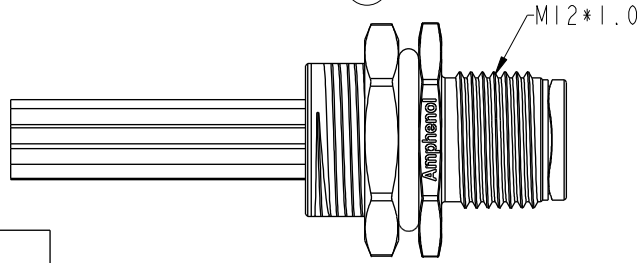
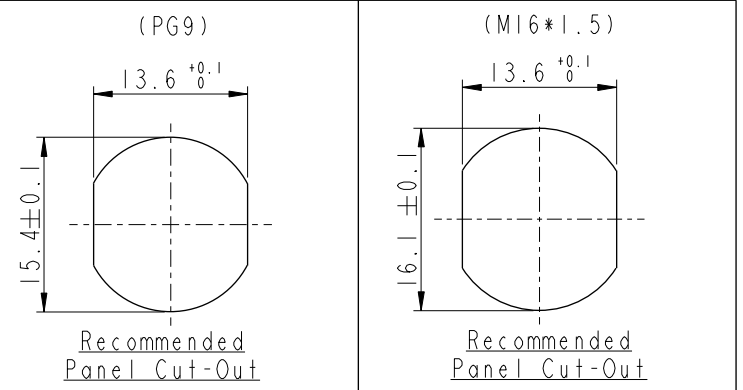
THIS DOCUMENT IS SUBJECT TO CHANGE WITHOUT NOTICE. IT IS CONFIDENTIAL AND A PROPERTY OF Amphenol LTW. DISCLOSURE TO THIRD PARTY HAS TO BE AUTHORIZED BY Amphenol LTW.

| REV. | ECN NO. | DATE | SIGN | DESCRIPTION |
|------|----------------------------------|------------|-------------|--------------------------|
| B | LE31570262~271 | 2015/07/23 | Yulong_wang | Change to Share Drawing. |
| C | LEN1680581~592 LEN1680604~605 | 2016/08/08 | Yulong_wang | Add 6Pin & IP69K. |
| D | E191630 | 2019/09/19 | Ruru | Update Wire Tolerance |



ALTW
 CONFIDENTIAL
 2019-09-19
 R&D DEPT.

- Notes:
- * \varnothing Important Dimension.
 - * Waterproof Rate: IP68, IP69K.
 - * Connector: Nylon+GF, Black.
 - * Male Pin: Copper Alloy, Gold Plated.
 - * Shield: Zinc Alloy, Nickel Plated.
 - * Screw Nut: Zinc Alloy, Nickel Plated.
 - * Panel O-Ring: Viton, Black.
 - * Wire harness: ULI061
 - * Rated Voltage: 3 & 4Pin 250V dc. or ac.
5Pin 60V dc. or ac.
6~12Pin 30V dc. or ac.
 - * Rated Current: 3~5Pin 4A
6~8Pin 2A
10~12Pin 1.5A
 - * Operating Temperature: -25~85°C
 - * For Panel Thickness Max 4.5mm.
 - * Nut Torque: 4-6 Kgf.cm.
 - * Wire harness Tolerance: 150~300±15mm
301~1000±20mm
Over1000 ±50/-0mm

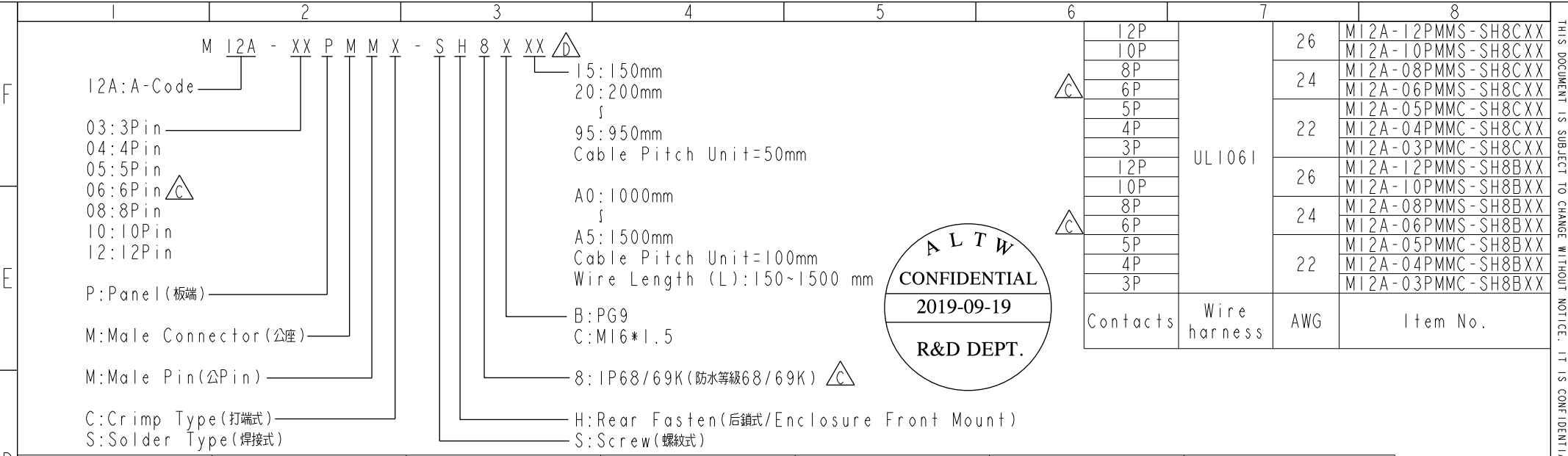


| | | |
|---|----------------|--|
| UNIT: mm | | TITLE M12 A-Code Male Conn. Panel Rear With Wire harness |
| TOLERANCE .X ±0.25 .XX ±0.1 .XXX ±0.05 ANGLES ±1° | SCALE 3:2 | SIZE A4 |
| | REV. D | SHEET 1 OF 2 |
| | WC-REV. A.3 | \varnothing : Inspection item |

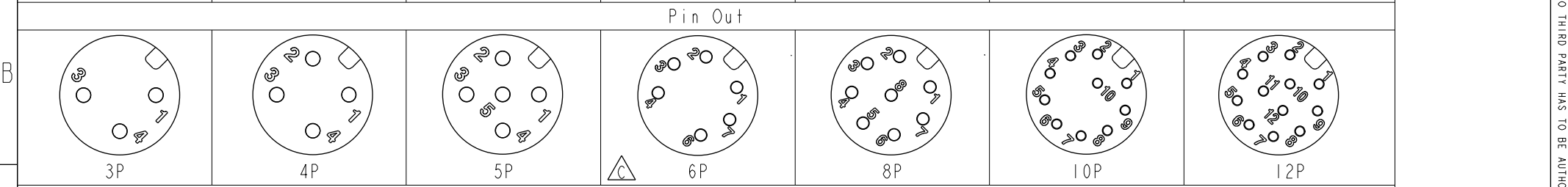
Amphenol LTW
 安費諾亮泰企業股份有限公司

| | | |
|------------------------------|--------------------|--------------------|
| ITEM NO | DRAWN BY Ruru | DATE 2019-09-19 |
| DWG NO M12A-XXPMMX-SH8XXX | CHECKED BY Rita | DATE 2019-09-19 |
| CUSTOMER ALTW | APPROVED BY Max | DATE 2019-09-19 |

THIS DOCUMENT IS SUBJECT TO CHANGE WITHOUT NOTICE. IT IS CONFIDENTIAL AND A PROPERTY OF Amphenol LTW. DISCLOSURE TO THIRD PARTY HAS TO BE AUTHORIZED BY Amphenol LTW.



| Pin # | Wire | Pin # | Wire | Pin # | Wire | Pin # | Wire | Pin # | Wire | Pin # | Wire | Pin # | Wire |
|-------|---------|-------|---------|-------|---------|-------|----------|-------|----------|-------|----------|-------|----------|
| 5 | -- | 5 | -- | 5 | Gray 灰 | 5 | Gray 灰 | 5 | Gray 灰 | 5 | Gray 灰 | 5 | Gray 灰 |
| 4 | Black 黑 | 4 | Black 黑 | 4 | Black 黑 | 4 | Yellow 黃 | 4 | Yellow 黃 | 4 | Yellow 黃 | 4 | Yellow 黃 |
| 3 | Blue 藍 | 3 | Blue 藍 | 3 | Blue 藍 | 3 | Green 綠 | 3 | Green 綠 | 3 | Green 綠 | 3 | Green 綠 |
| 2 | -- | 2 | White 白 | 2 | White 白 | 2 | Brown 棕 | 2 | Brown 棕 | 2 | Brown 棕 | 2 | Brown 棕 |
| 1 | Brown 棕 | 1 | Brown 棕 | 1 | Brown 棕 | 1 | White 白 | 1 | White 白 | 1 | White 白 | 1 | White 白 |



Pin Assignments Front View

| | | | | | | | |
|---|--|--|----------------|--------------------------------------|------------------|------------------------------|--------------------|
| UNIT: mm | | TITLE M12 A-Code Male Conn. Panel Rear With Wire harness | | Amphenol LTW 安費諾亮泰企業股份有限公司 | ITEM NO | DRAWN BY | DATE |
| | | SCALE 3:2 | SIZE A4 | | SHEET 2 OF 2 | DWG NO M12A-XXPMXX-SH8XXX | CHECKED BY Rita |
| TOLERANCE .X ±0.25 .XX ±0.1 .XXX ±0.05 ANGLES ±1° | | REV. D | WC-REV. A.3 | QC: Inspection item | CUSTOMER ALTW | APPROVED BY Max | DATE 2019-09-19 |

X-ON Electronics

Largest Supplier of Electrical and Electronic Components

Click to view similar products for [Sensor Cables / Actuator Cables](#) category:

Click to view products by [Amphenol](#) manufacturer:

Other Similar products are found below :

[60963](#) [60964](#) [M83513/19-F01CP](#) [703000D02F2002](#) [703001D02F0602](#) [703001D02F300](#) [704000D02F120](#) [773032K02F030](#) [802027107404-1](#)
[802027213811-1](#) [804001A09M150](#) [805001A09M0502](#) [84914-0235](#) [84914-0237](#) [885030A09M020](#) [8R4J30E03C3003](#) [1200651332](#)
[1200651713](#) [1200660844](#) [1200660845](#) [1200661173](#) [1200680071](#) [1200720053](#) [1200720081](#) [1200720099](#) [1200720217](#) [1200800231](#)
[1200860125](#) [1200870123](#) [1200980102](#) [1200650267](#) [1200650298](#) [1200660183](#) [1200660782](#) [1200660849](#) [1200661295](#) [1200661297](#)
[1200661342](#) [1200661343](#) [1200670080](#) [1200670220](#) [1200680331](#) [1200720252](#) [1200730184](#) [1200860344](#) [1200870359](#) [1200870643](#)
[1200980008](#) [1200980031](#) [1210502211](#)