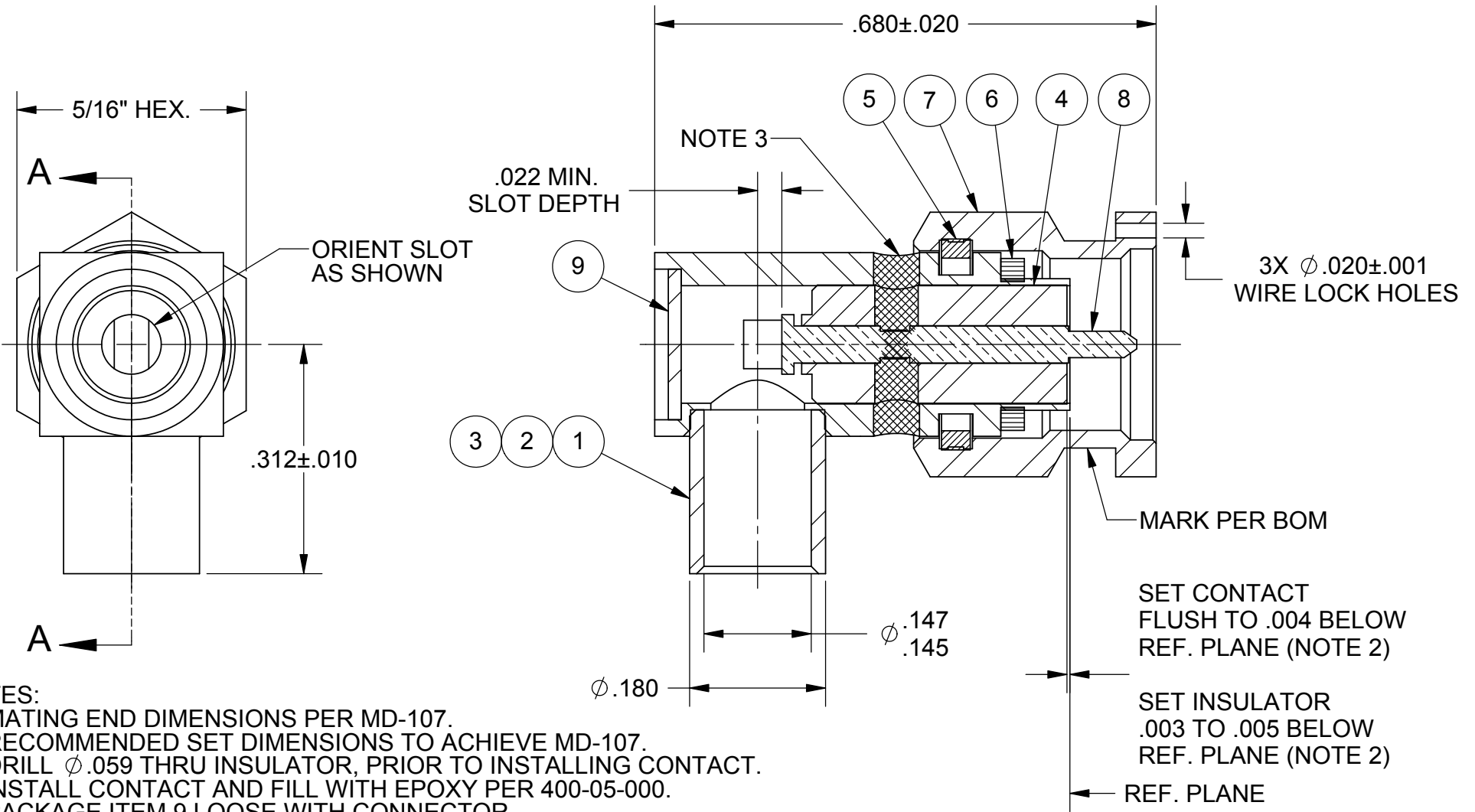


REVISION HISTORY			
REV	DESCRIPTION	DATE	APPROVED
E	REV. DCN 33151	05/05	BRT
F	DCN 42558	08/16	STW



- NOTES:
- 1.) MATING END DIMENSIONS PER MD-107.
 - 2.) RECOMMENDED SET DIMENSIONS TO ACHIEVE MD-107.
 - 3.) DRILL $\phi .059$ THRU INSULATOR, PRIOR TO INSTALLING CONTACT. INSTALL CONTACT AND FILL WITH EPOXY PER 400-05-000.
 - 4.) PACKAGE ITEM 9 LOOSE WITH CONNECTOR.

MATERIAL:	PER BOM
FINISH:	PER BOM
PROPRIETARY	
<p>THE INFORMATION CONTAINED IN THIS DRAWING IS THE SOLE PROPERTY OF SV MICROWAVE, INC. ANY REPRODUCTION IN PART OR AS A WHOLE WITHOUT THE WRITTEN PERMISSION OF SV MICROWAVE, INC IS PROHIBITED.</p>	

DIMENSIONS ARE IN INCHES TOLERANCES:	
FRACTIONAL:	$\pm 1/64$ ANGULAR: $X^\circ \pm 1'0''$ $X'X'' \pm 15'$
DECIMAL:	X $\pm .030$ XX $\pm .010$ XXX $\pm .005$
INTERPRET DIMENSIONS AND TOLERANCES PER ASME Y14.5M - 1994	
THIRD ANGLE PROJECTION	

UNLESS OTHERWISE SPECIFIED	
<p>1) ALL DIMENSIONS ARE AFTER PLATING. 2) BREAK CORNERS & EDGES .005 R. MAX. 3) CHAM. 1ST & LAST THREADS. 4) SURFACE ROUGHNESS $63 \sqrt{\text{MIL-STD-10}}$. 5) DIA.'S ON COMMON CENTERS TO BE CONCENTRIC WITHIN .005 T.I.R. 6) REMOVE ALL BURRS</p>	
DRAWN:	BRT 08/14/98
CHECKED:	RA 04/27/89
APPROVED:	CT 04/28/89
E.M. SIMULATION:	N/A

SV Microwave, Inc.		
2400 Centrepark West Drive, Suite 100 West Palm Beach, FL 33409		
TITLE: SMA PLUG, RIGHT ANGLE SOLDER-ON FOR .141 SEMI-RIGID CABLE		
SIZE: A	CAGE CODE: 95077	DWG. NO.: M39012/80B3004
SCALE: 5:1		SHEET 1 OF 2

X-ON Electronics

Largest Supplier of Electrical and Electronic Components

Click to view similar products for [RF MIL Spec Connectors](#) category:

Click to view products by [Amphenol](#) manufacturer:

Other Similar products are found below :

[M39012/61-3001](#) [GTS01-16-10S-116](#) [CTVP00RW-25-35S\(506\)](#) [93-150752-06S](#) [SMA6251A1-3GT50G-50B](#) [UG-89/U\(40\)](#) [M39012/27-0018](#)
[M39012/27-0101](#) [M39012/01-0005](#) [SMA1111A1-3GT50G-1-50](#) [625-MAGNET](#) [M39012/28-0010](#) [M39012/55B3022](#) [M39012/26-0018](#)
[M39012/26-0022](#) [M39012/26-0225](#) [M55339/47-30001](#) [SMA1111A2-3GT50G-5-50](#) [SMA1112A5-3GT50G-5-50](#) [SMA1112A6-3GT50G-1-50](#)
[M39012/79-3108](#) [M39012/79B3001](#) [M39012/80-3107](#) [M39012/55-3030](#) [M39012/56-3126](#) [M55339/02-30001](#) [M55339/28-30001](#)
[M55339/28-30002](#) [M55339/29-30001](#) [M55339/31-30001](#) [UG-29A/U](#) [SMA2071A1-3GT50G-50](#) [1102-0003](#) [M39012/16-0101](#) [M39012/26-0011](#) [M39012/26-0012](#) [M39012/26B0006](#) [M39012/26B0015](#) [M39012/28-0022](#) [M39012/30-0101](#) [M39012/31-0001](#) [M39012/31-0002](#)
[M39012/33-0001](#) [M39012/39-0501](#) [M39012/55-3006](#) [M39012/55-3007](#) [M39012/55-3009](#) [M39012/55-3026](#) [M39012/55-3028](#) [M39012/55-3109](#)