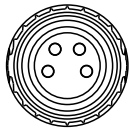
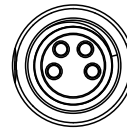
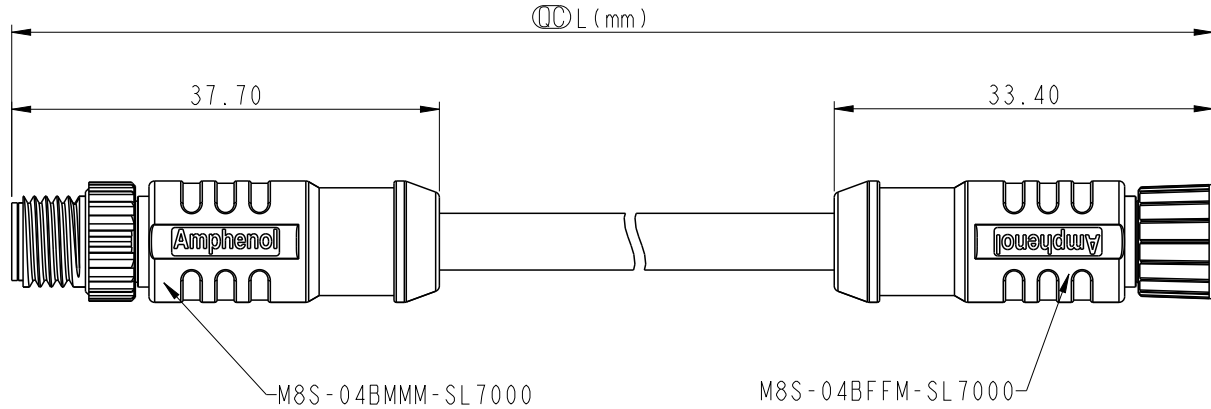


ALTW
CONFIDENTIAL
2019-04-22
R&D DEPT.

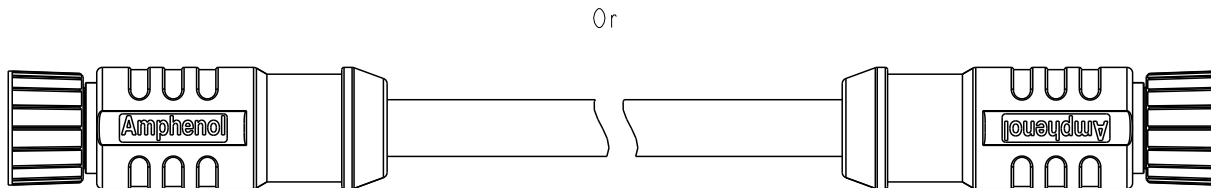
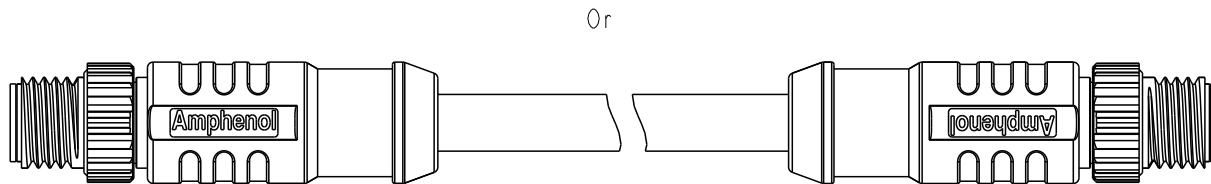
REV.	ECN NO.	DATE	SIGN	DESCRIPTION
A		2019/04/22	Jane	Initial Released.




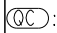
C1



C2



UNIT: mm 
 TOLERANCE ±0.5mm

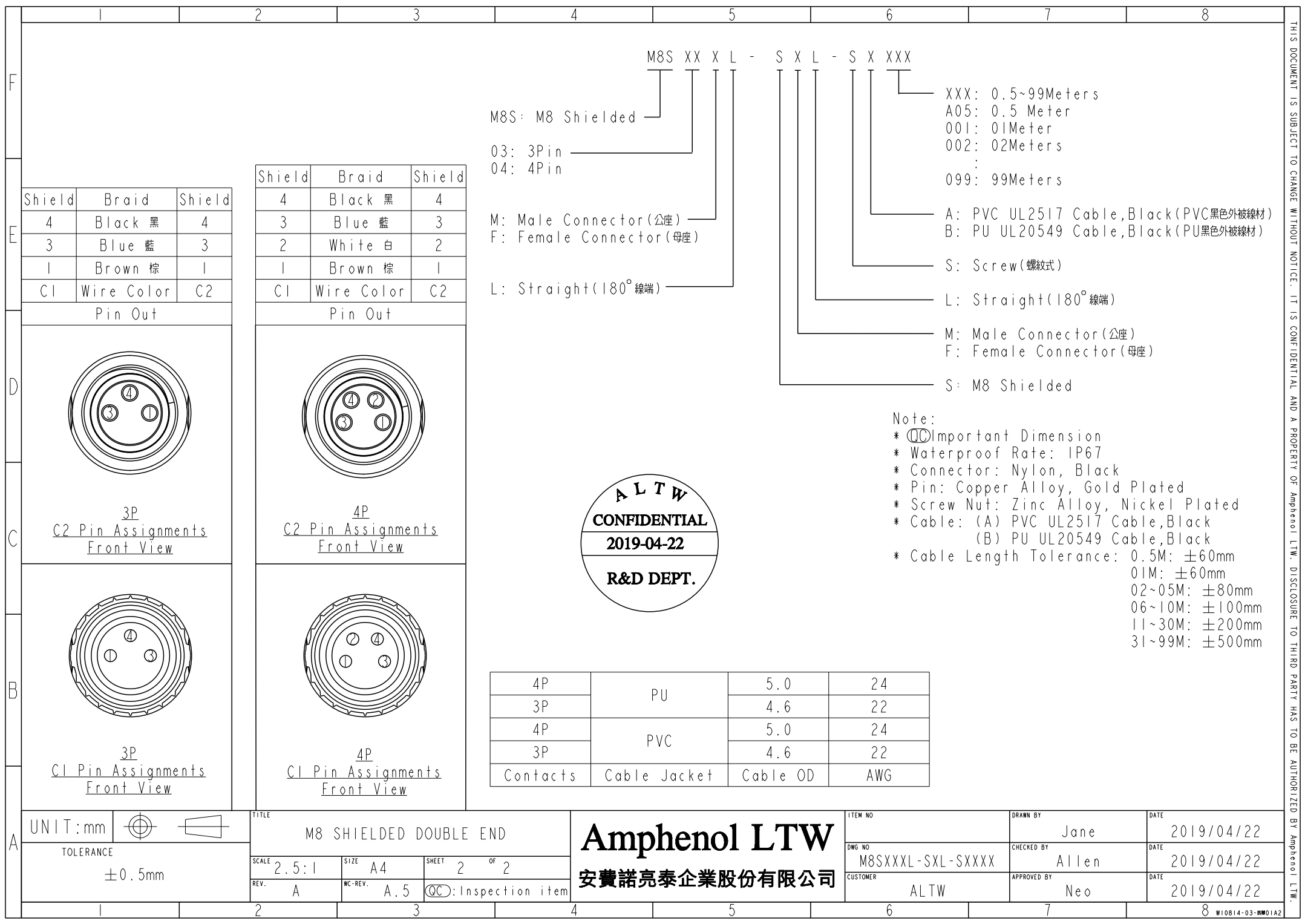
TITLE M8 SHIELDED DOUBLE END
 SCALE 1.5:1 SIZE A4 SHEET 1 OF 2
 REV. A WC-REV. A.5 : Inspection item

Amphenol LTW
 安費諾亮泰企業股份有限公司

ITEM NO	DRAWN BY Jane	DATE 2019/04/22
DWG NO M8SXXXL-SXL-SXXXX	CHECKED BY Allen	DATE 2019/04/22
CUSTOMER ALTW	APPROVED BY Neo	DATE 2019/04/22

THIS DOCUMENT IS SUBJECT TO CHANGE WITHOUT NOTICE. IT IS CONFIDENTIAL AND A PROPERTY OF AMPHENOL LTW. DISCLOSURE TO THIRD PARTY HAS TO BE AUTHORIZED BY AMPHENOL LTW.

THIS DOCUMENT IS SUBJECT TO CHANGE WITHOUT NOTICE. IT IS CONFIDENTIAL AND A PROPERTY OF Amphenol LTW. DISCLOSURE TO THIRD PARTY HAS TO BE AUTHORIZED BY Amphenol LTW.



M8S XX X L - S X L - S X XXX

M8S: M8 Shielded

03: 3Pin
04: 4Pin

M: Male Connector(公座)
F: Female Connector(母座)

L: Straight(180°線端)

XXX: 0.5~99Meters
A05: 0.5 Meter
001: 01Meter
002: 02Meters
:
099: 99Meters

A: PVC UL2517 Cable,Black(PVC黑色外被線材)
B: PU UL20549 Cable,Black(PU黑色外被線材)

S: Screw(螺紋式)

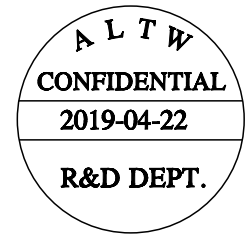
L: Straight(180°線端)

M: Male Connector(公座)
F: Female Connector(母座)

S: M8 Shielded

Note:

- * \varnothing Important Dimension
- * Waterproof Rate: IP67
- * Connector: Nylon, Black
- * Pin: Copper Alloy, Gold Plated
- * Screw Nut: Zinc Alloy, Nickel Plated
- * Cable: (A) PVC UL2517 Cable,Black
(B) PU UL20549 Cable,Black
- * Cable Length Tolerance: 0.5M: ±60mm
01M: ±60mm
02~05M: ±80mm
06~10M: ±100mm
11~30M: ±200mm
31~99M: ±500mm



4P	PU	5.0	24
3P		4.6	22
4P	PVC	5.0	24
3P		4.6	22
Contacts	Cable Jacket	Cable OD	AWG

Shield	Braid	Shield
4	Black 黑	4
3	Blue 藍	3
1	Brown 棕	1
CI	Wire Color	C2

Pin Out

Shield	Braid	Shield
4	Black 黑	4
3	Blue 藍	3
2	White 白	2
1	Brown 棕	1
CI	Wire Color	C2

Pin Out

3P
C2 Pin Assignments
Front View

4P
C2 Pin Assignments
Front View

3P
CI Pin Assignments
Front View

4P
CI Pin Assignments
Front View

UNIT:mm \varnothing
TOLERANCE
±0.5mm

TITLE
M8 SHIELDED DOUBLE END
SCALE 2.5:1 SIZE A4 SHEET 2 OF 2
REV. A WC-REV. A.5 \varnothing Inspection item

Amphenol LTW
安費諾亮泰企業股份有限公司

ITEM NO	DRAWN BY Jane	DATE 2019/04/22
DWG NO M8SXXXL-SXL-SXXX	CHECKED BY Allen	DATE 2019/04/22
CUSTOMER ALTW	APPROVED BY Neo	DATE 2019/04/22

X-ON Electronics

Largest Supplier of Electrical and Electronic Components

Click to view similar products for [Sensor Cables / Actuator Cables](#) category:

Click to view products by [Amphenol](#) manufacturer:

Other Similar products are found below :

[60963](#) [60964](#) [703000D02F2002](#) [703001D02F0602](#) [703001D02F300](#) [704000D02F120](#) [773032K02F030](#) [802027107404-1](#) [802027213811-1](#)
[804001A09M150](#) [805001A09M0502](#) [84914-0235](#) [84914-0237](#) [885030A09M020](#) [8R4J30E03C3003](#) [1200651332](#) [1200651713](#) [1200660844](#)
[1200660845](#) [1200661173](#) [1200680071](#) [1200720053](#) [1200720081](#) [1200720099](#) [1200720217](#) [1200800231](#) [1200860125](#) [1200870123](#)
[1200980102](#) [1200650267](#) [1200650298](#) [1200660183](#) [1200660782](#) [1200660849](#) [1200661295](#) [1200661297](#) [1200661342](#) [1200661343](#)
[1200670080](#) [1200670220](#) [1200680331](#) [1200720252](#) [1200730184](#) [1200860344](#) [1200870359](#) [1200870643](#) [1200980008](#) [1200980031](#)
[1210502211](#) [1210400542](#)