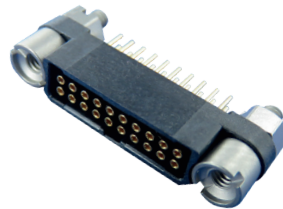


Micro HDAS

High performance & versatile
Board to Board 1,27mm / .050" pitch connector



Description

Amphenol Socapex introduce the micro HDAS, its new micro board to board and board to wire connector. Micro HDAS allows you to save space on your board while maintaining a high level of performances. Offering you PC Tail & crimp contact terminations, Micro HDAS provides a modularity to fit all your needs. Micro HDAS is a Nicomatic EMM equivalent connector.

Benefits

- Smaller & lighter rugged board connector
- Intermateable with Nicomatic's EMM
- Protected contacts by design
- 7,4mm distance between boards

Features

- 9 arrangements, from 4 to 60 contacts
- PC Tail & Crimp contacts (pins only)
- Meet & Exceed MIL-DTL-55302G & 83513G
- Full range of fittings to answers your needs

Configurations



Board to cable
(Crimp AWG 24 to 30)



Mezzanine



Mother board to
Daughter board

Exploded views

CONTACTS



Clip technology (socket) & machined pins contacts with gold plate

INSULATORS



Molded LCP
Polarized

FITTINGS



Jackscrows



Male Guiding



Female Guiding

Stainless steel

Markets



Commercial Aerospace



Military Aerospace



Ground Vehicle



C4ISR



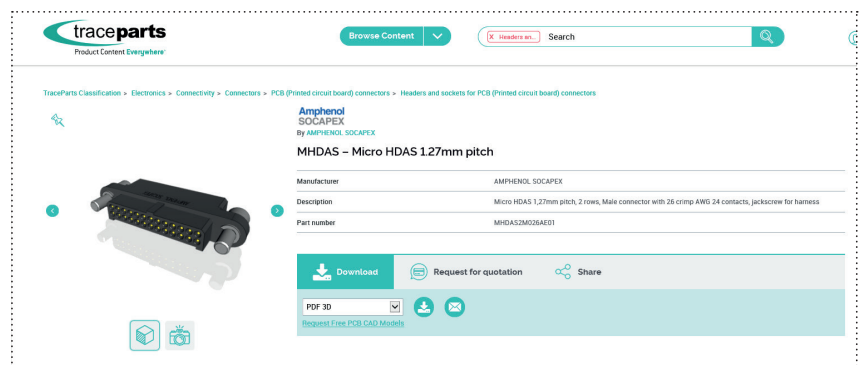
Missiles

Technical Specifications

MECHANICAL CHARACTERISTICS	Micro HDAS	MIL-DTL-55302	
Backoff (mm)	1,27	N/A	
Contact engagement & separation forces			
Mating force per contact (N)	$0,39 < F < 0,68$	4.5.3	
Unmating force per contact (N)	$0,16 < F < 0,21$		
Mating and unmating forces - Initial - Tested on a 30 ways connector			
Mating forces (N) - average per contact	0,44	4.5.4	
Unmating forces (N) - average per contact	0,31		
Durability cycles	500	4.5.9	
Sinusoidal vibrations	Up to 45g	4.5.10	
Shocks (sawtooth/6ms)	Up to 160g	4.5.10	
Fixing torque between connector and PCB (N.m)	0,3	N/A	
Fixing torque between connectors (N.m)	0,2	N/A	
ENVIRONMENTAL CHARACTERISTICS			
Temperature cycling (°C) - EIA-364-32D	-65/+260	4.5.13	
Salt spray (hours)	96	4.5.11	
Humidity	10 cycles of 24 hours	4.5.15	
ELECTRICAL CHARACTERISTICS			
	Contact configuration	@25°C	@85°C
Current rating per contact (A) - 30 ways connector	YD/YD	3,4A	2,5A
	YD/YC	3,9A	2,6A
	YD/CRIMP	Depending on cable, up to 5A	
Insulation resistance (at 500Vdc) (GΩ)	> 5	4.5.8	
Contact resistance (mΩ)	< 8	4.5.5	
Dielectric withstanding voltage (Vrms) at sea level	750		
Dielectric withstanding voltage (Vrms) 70 000 feet (between contacts)	480	4.5.7.1	
Dielectric withstanding voltage (Vrms) 70 000 feet (connectors soldered)	350		

Online configurator & 3D model download

You can define references according your needs and download directly 3D models in several formats on Micro HDAS product page in our website. www.amphenol-socapex.com or by clicking here.



How to order

1.	2.	3.	4.	5.	6.
Series	Number of rows	Connector type	Number of contacts	Contact type	Fitting
MHDAS	2	M	016	YC	E61

1. Series name

MHDAS Micro HDAS 1,27 mm pitch

2. Number of rows

2 2 rows connector

3. Connector type

M Male connector

F Female connector

4. Number of contacts

004 **020** **040**

008 **026** **050**

016 **030** **060**

5. Contact type

A Crimp AWG 24 (male only) ✓

B Crimp AWG 26 (male only) ✓

G Crimp AWG 28-30 (male only) ✓

YC Right angle PC tail standard ✓

YD Straight PC tail standard ✓



6. Fitting

E01 Jackscrew for harness

E10 Male straight guiding

E11 Male 90° guiding

E50 Female straight jackscrew

E51 Female 90° jackscrew

E60 Female straight guiding

E61 Female 90° guiding

Fittings compatibility

Contact	Fitting	Compatible with
A - B - G	E01	Jackscrew for harness
	E11	Male 90° guiding
YC	E51	Female 90° jackscrew
	E61	Female 90° guiding
YD	E10	Male straight guiding
	E50	Female straight jackscrew
	E60	Female straight guiding

Note: fittings are always delivered with connector.

Connector marking

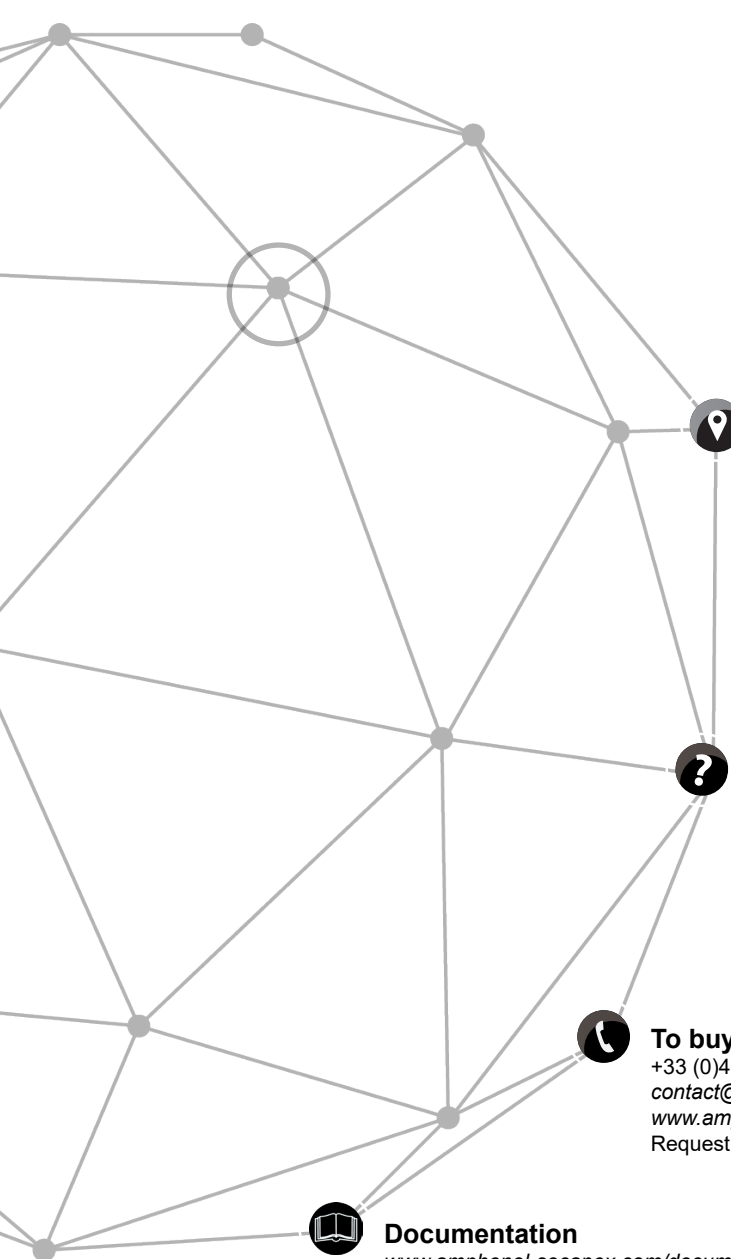
Micro HDAS connectors are laser marked.
Example of marking :

Series name	Contact type	Date code
MHDAS	YC	YYWW

Series name : MHDAS = Micro HDAS

Contact type : as specified in our how to order

YYWW : year + week batch



Amphenol Socapex

948, promenade de l'Arve BP29
74311 Thyez Cedex - France
Phone: +33 (0)4 50 89 28 00
contact@amphenol-socapex.fr
www.amphenol-socapex.com



For Technical Support

+33 (0)4 50 89 28 49
technicalsupport@amphenol-socapex.fr
www.amphenol-socapex.com/technical_support



To buy our products

+33 (0)4 50 90 28 00
contact@amphenol-socapex.fr
www.amphenol-socapex.com/amphenol/sales
Request a quote online at www.amphenol-socapex.com/quotation_request



Documentation

www.amphenol-socapex.com/documentation
To order a paper version of our catalogs, send an e-mail to communication@amphenol-socapex.fr



X-ON Electronics

Largest Supplier of Electrical and Electronic Components

Click to view similar products for [Rectangular MIL Spec Connectors](#) category:

Click to view products by [Amphenol](#) manufacturer:

Other Similar products are found below :

[891-011-15SA2-BSST](#) [CTS-S16/16](#) [65002-062](#) [CY4602-000](#) [732-8020-01](#) [77058-22-55PN](#) [81542-20](#) [86.030.0053.0](#) [1241346-1](#) [RM252-020-311-2900](#) [DMC-M 08-16 SA](#) [DMC-M 08-16 SAE](#) [1589051-4](#) [MSO34MPK1E1](#) [BACC65CAMA](#) [BACC65CP1PN](#) [BACI10BC0816PNBA](#) [1900ND05S1B00B](#) [HSB-D4S03DM222X](#) [2217548-1](#) [891-006-9PS-BST1T](#) [891-009-15SA2-BRT1T](#) [27963-20T12](#) [SIM2N40NC3](#) [SIM2S100A](#) [1604996-2](#) [SMD25PN90L-4055](#) [1900ND08S1B00A](#) [22628-10-6P-791](#) [GMCT50F0T0000](#) [RE04-212S](#) [M32139/03-G05SN](#) [CTD160E01F-6148](#) [CTJ112E03B](#) [CTJ122E02D-8000](#) [CTJ-3D-12](#) [CTJ920E06N-513](#) [CTJ920E12N-513](#) [CTL-16-090](#) [CY4600-000](#) [CY4601-000](#) [38111-14-15SN](#) [38112-14-15PN](#) [MMA23-0111R1](#) [MMD25-0071P1](#) [33516062020](#) [33526M11-08PE](#) [DMC-M99-01AN](#) [Y59113WE20PNV00300](#) [ZPF000000000106310](#)