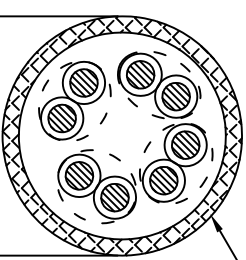
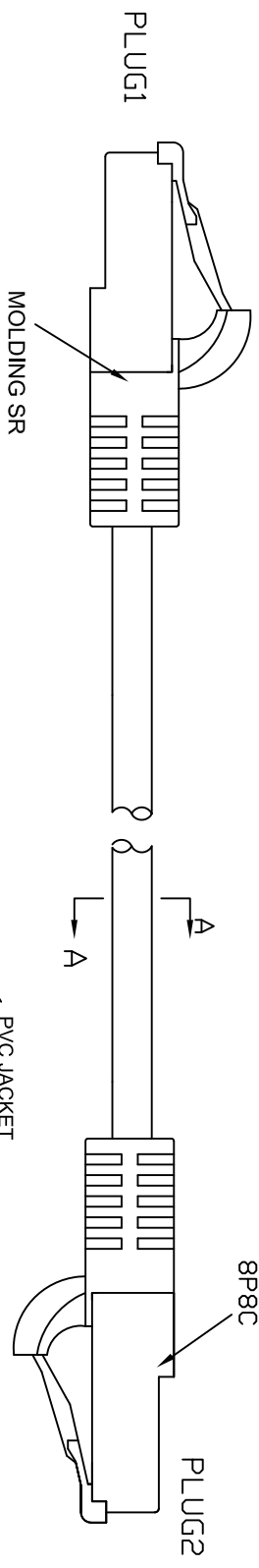
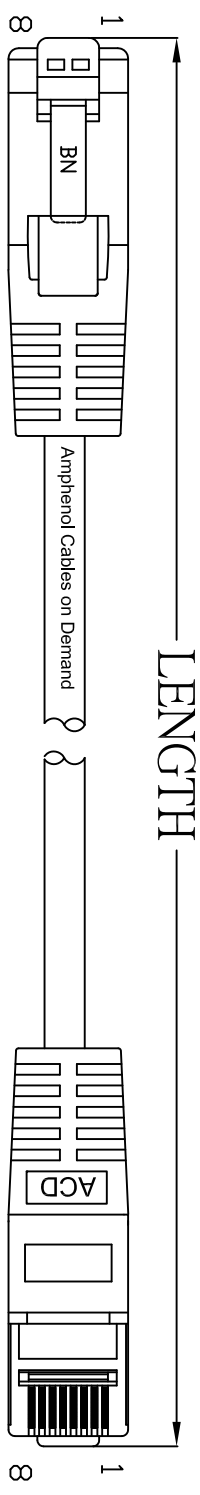


THE INFORMATION CONTAINED IN THIS DRAWING IS THE SOLE PROPERTY OF AMPHENOL CABLES ON DEMAND. ANY REPRODUCTION OR DISCLOSURE TO THIRD PARTIES IN PART OR WHOLE, WITHOUT THE EXPRESS WRITTEN PERMISSION OF AMPHENOL CABLES ON DEMAND IS PROHIBITED.

REV.	DESCRIPTION	DATE	APPROVED
A	NEW RELEASE	25/02/07	
A1	CHANGE PLUG BOOT TO MOLDED SR	01/03/07	



PIN OUT: T568B		
PLUG 1	PLUG 2	COLOR
PIN 1	PIN 1	WHITE/ORANGE
PIN 2	PIN 2	ORANGE
PIN 3	PIN 3	WHITE/GREEN
PIN 4	PIN 4	BLUE
PIN 5	PIN 5	WHITE/BLUE
PIN 6	PIN 6	GREEN
PIN 7	PIN 7	WHITE/BROWN
PIN 8	PIN 8	BROWN

LENGTH	P/N	Cable Color
3FT ±1 inch	MP-5ERJ45UNNNA-003	Gray
5FT ±2 inch	MP-5ERJ45UNNNA-005	Gray
7FT ±2 inch	MP-5ERJ45UNNNA-007	Gray
10FT ±3 inch	MP-5ERJ45UNNNA-010	Gray
14FT ±3 inch	MP-5ERJ45UNNNA-014	Gray
25FT ±4 inch	MP-5ERJ45UNNNA-025	Gray
50FT ±8 inch	MP-5ERJ45UNNNA-050	Gray
75FT ±8 inch	MP-5ERJ45UNNNA-075	Gray
100FT ±8 inch	MP-5ERJ45UNNNA-100	Gray

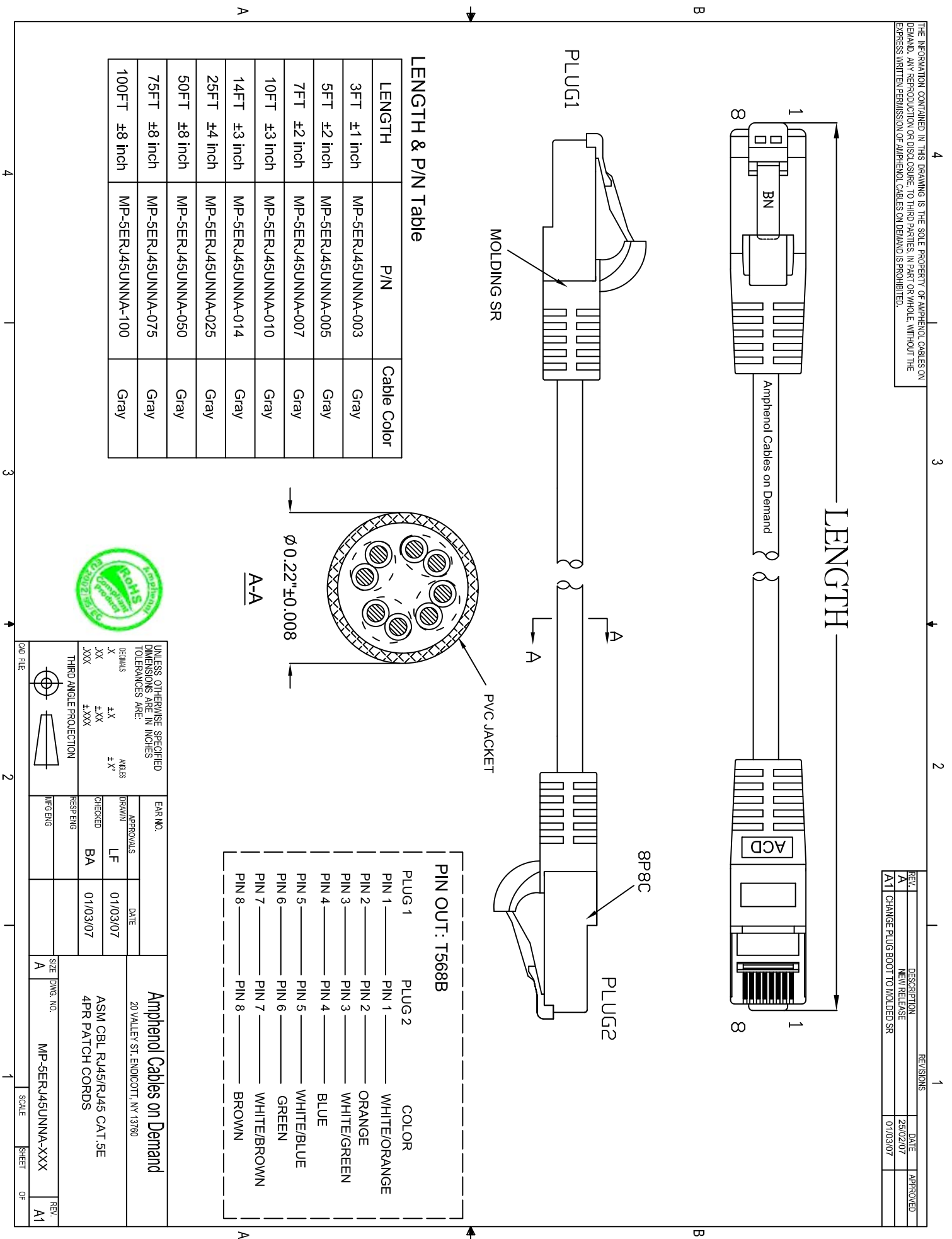


UNLESS OTHERWISE SPECIFIED DIMENSIONS ARE IN INCHES TOLERANCES ARE:

DECIMALS	ANGLES
X	± X°
XX	±.XX
XXX	±.XXX



E.A.R. NO.		Amphenol Cables on Demand	
APPROVALS	DATE	20 VALLEY ST. ENDICOTT, NY 13760	
DRAWN	01/03/07	ASM CBL RJ45/RJ45 CAT.5E	
CHECKED	BA	4PR PATCH CORDS	
RESP ENG	01/03/07	SIZE	MP-5ERJ45UNNNA-XXX
MFG ENG		DWG. NO.	
		SCALE	
		SHEET	
		OF	
		REV.	A1



## X-ON Electronics

Largest Supplier of Electrical and Electronic Components

*Click to view similar products for [Ethernet Cables / Networking Cables](#) category:*

*Click to view products by [Amphenol](#) manufacturer:*

Other Similar products are found below :

[73-6670-7](#) [73-6680-15](#) [73-7797-25](#) [MCJB2-10P6Q7-120](#) [84909-0204](#) [1200700174](#) [1200860368](#) [E16A06002M030](#) [E200102-009-S1](#)  
[AX105346-EW](#) [MT14-187L](#) [17-103530](#) [ERWPAB3002M005](#) [190-038045-01](#) [NK5EPC18RDY](#) [NK5EPC18VLY](#) [NK5EPC18YLY](#)  
[NK5EPC1GRY](#) [NK5EPC4Y](#) [NK5EPC6YLY](#) [NK5EPC8BLY](#) [NK5EPC9YLY](#) [1969343-6](#) [C501100010](#) [C501106002](#) [C501106007](#)  
[C501106015](#) [C501106025](#) [C601102010](#) [C601104010](#) [C601106007](#) [C601106015](#) [2142758-2](#) [2168427-2](#) [CAT1106007](#) [SR02P0-26E5-15.0](#)  
[SR02S0-26E5-15.0](#) [21949-1](#) [2J1866A](#) [RJF SFTP 5E 0500](#) [AX100351](#) [MN14CEC/ST](#) [C501100015](#) [C501106004](#) [C501106010](#) [C5F1108007](#)  
[C601104004](#) [C601106004](#) [CA21106004](#) [CA21106010](#)