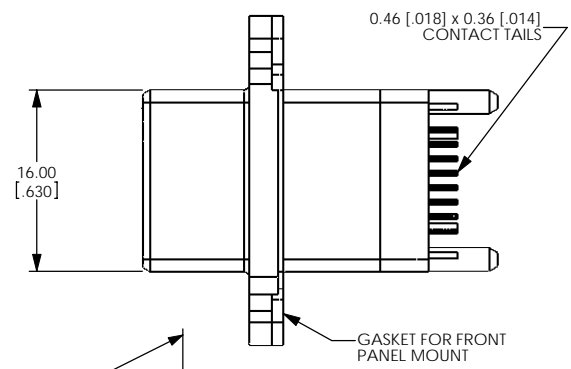
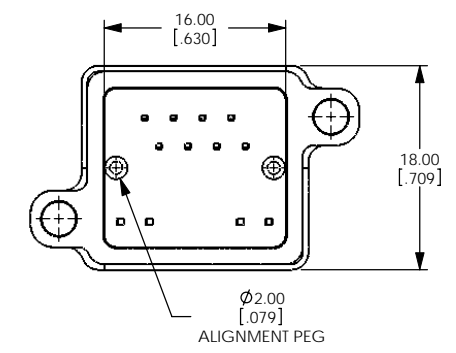
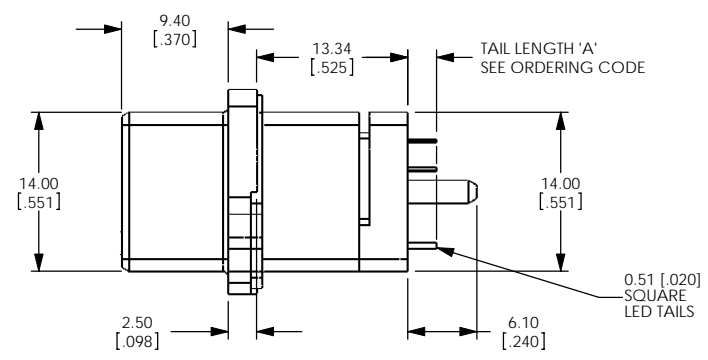
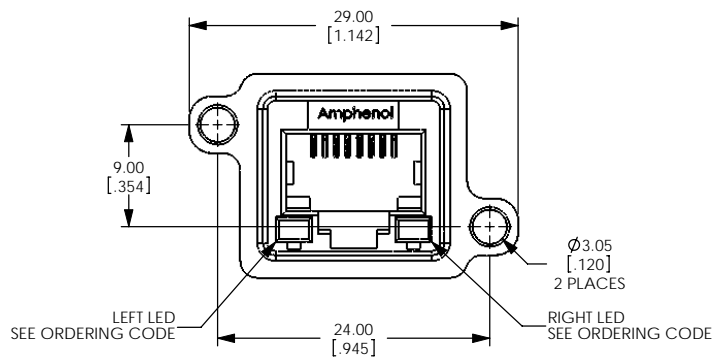
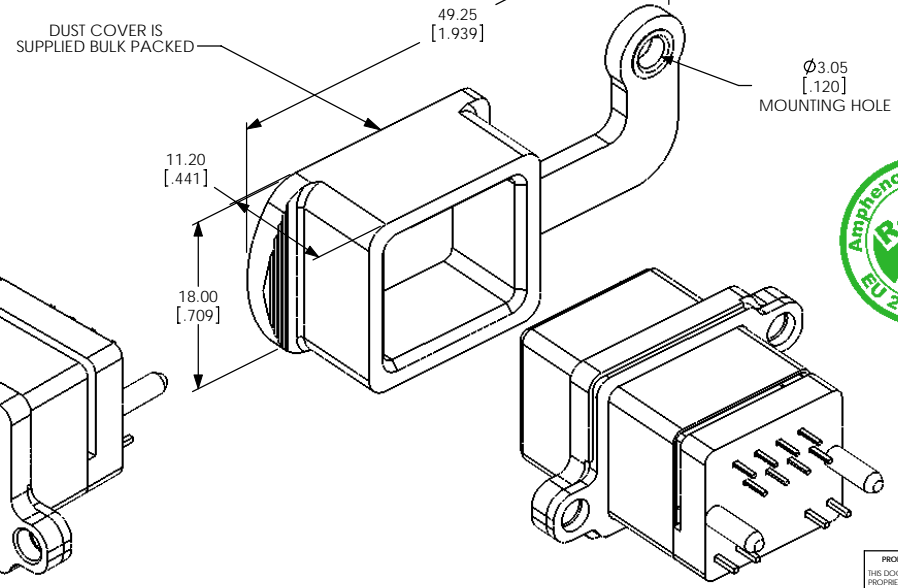


| REVISIONS | | | |
|-----------|-----------------|------|--------|
| REV | ECN, ERN NO. | DATE | APPRD. |
| A | PRODUCT DRAWING | TBD | K.L. |



ORDERING CODE: **MRJ-518X-X1**

- SERIES, RUGGED RJ
- RECEPTACLE
- VERTICAL MOUNT WITH DUST COVER SUPPLIED
- NUMBER OF CONTACTS
- LED OPTION
 - 0=NONE
 - 1=GREEN LEFT, YELLOW RIGHT
 - 4=YELLOW LEFT, GREEN RIGHT
 - 5=GREEN LEFT, GREEN RIGHT
- CONTACT TAIL OPTION
 - 0: TAIL LENGTH A=2.54 [.100]
 - B: TAIL LENGTH A=3.81 [.150]
- SINGLE PORT



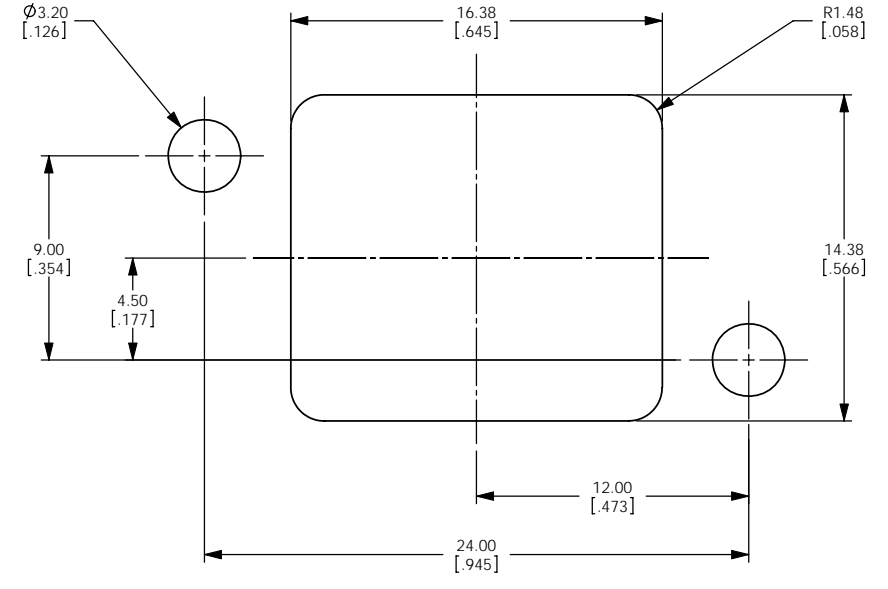
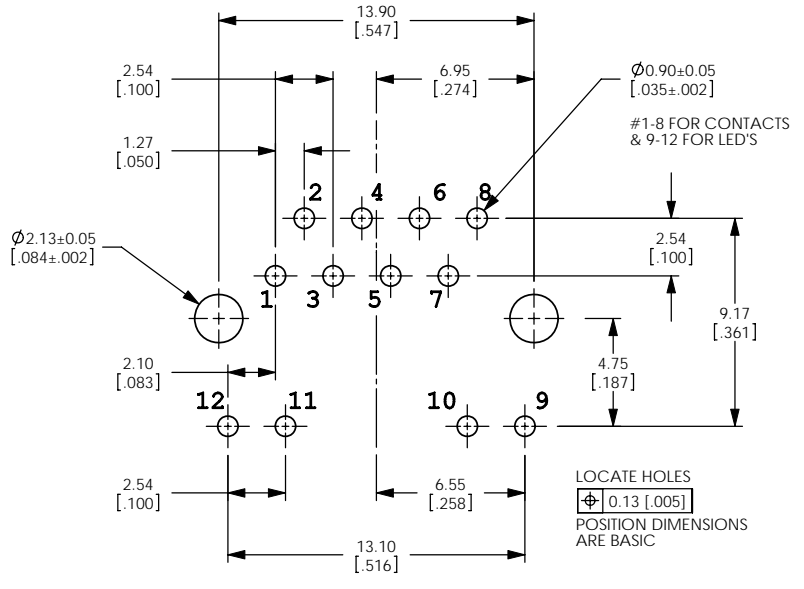
NOTES:

- MATERIAL: ALL MATERIALS ARE RoHS COMPLIANT PER EU DIRECTIVE 2002/95/EC AND AMENDMENTS
 - SHELL - DIECAST ZINC, NICKEL PLATED
 - CONTACTS - PHOSPHOR BRONZE WITH 50 MICROINCHES (1.27 MICRONS) GOLD OVER 50 MICROINCHES (1.27 MICRONS) MINIMUM NICKEL ON THE MATING AREA AND GOLD OVER NICKEL ON THE CONTACT TAILS.
 - INSERTS - ENGINEERING THERMOPLASTIC, UL FLAMMABILITY RATING 94V-0, REAR INSERTS: BLACK, FRONT INSERT: CLEAR
 - LED'S - EPOXY LENS, STEEL TAILS WITH TIN PLATING
 - GASKET & DUST COVER - SILICONE RUBBER
- ENVIRONMENTAL PERFORMANCE PER IEC 60529 CODE IP67 FOR SEAL BETWEEN MATING AREA AND PCB SIDE OF CONNECTOR. GASKET PROVIDES FOR SEAL TO OUTSIDE FACE OF PANEL. SUPPLIED DUST COVER PROVIDES ADDED PROTECTION.
- CURRENT RATING: 1.5 AMPERES
- CONTACT RESISTANCE: 30 MILLIOHMS MAXIMUM
- OPERATING TEMPERATURE: -40C TO +105C

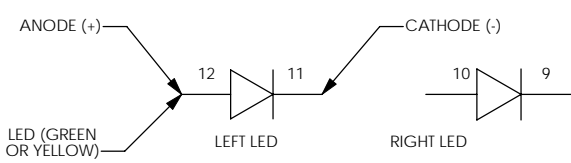
| | | | | |
|--------------------------------------|---------|-------------------------------|----------|---|
| UNLESS OTHERWISE SPECIFIED: | | DATE | | Amphenol Canada Corp. |
| DIMENSIONS ARE IN MILLIMETERS | | DRAWN | A. DODDS | |
| TOLERANCES: | | DESIGNED | | MRJ SERIES RUGGED MODULAR JACK, 8 POSITION VERTICAL, LED & TAIL LENGTH OPTIONS, FRONT PANEL MOUNT, DUST COVER, RoHS COMPLIANT |
| FRACTIONAL ± | | CHECKED | | |
| ANGULAR MATCH ± BEND ± | | K. LAMBIE | | |
| TWO PLACE DECIMAL ± | | I. E. APPRD. | | |
| THREE PLACE DECIMAL ± | | D. A. APPRD. | | SIZE |
| INTERPRET GEOMETRIC TOLERANCING PER: | | DWG. APPRD. | | DWG. NO. |
| MATERIAL | | ENG. REL. NO. EAR E13132 | | C |
| REF. | FINISH | DIMENSIONS ARE IN MILLIMETERS | | CODE ID. NO. |
| NEXT ASSY | USED ON | SCALE: 3:1 | | WEIGHT: |
| APPLICATION | | DO NOT SCALE DRAWING | | SHEET 1 OF 2 |

PROPRIETARY AND CONFIDENTIAL
THIS DOCUMENT CONTAINS PROPRIETARY INFORMATION AND SUCH INFORMATION MAY NOT BE DISCLOSED TO OTHERS FOR ANY PURPOSE OR USED FOR MANUFACTURING PURPOSES WITHOUT WRITTEN PERMISSION FROM AMPHENOL CANADA CORP.

| REVISIONS | | | |
|-----------|-----------------|------|--------|
| REV | ECN, ERN NO. | DATE | APPRD. |
| A | PRODUCT DRAWING | TBD | K.L. |



RECOMMENDED PANEL CUTOUT
(FRONT OF PANEL)



RECOMMENDED P.C.B. LAYOUT
(COMPONENT SIDE OF BOARD)



PROPRIETARY AND CONFIDENTIAL
 THIS DOCUMENT CONTAINS PROPRIETARY INFORMATION AND SUCH INFORMATION MAY NOT BE DISCLOSED TO OTHERS FOR ANY PURPOSE OR USED FOR MANUFACTURING PURPOSES WITHOUT WRITTEN PERMISSION FROM AMPHENOL CANADA CORP.

| | | | | | |
|-----------|---------|--------------------------------------|----------------------|-------------|-----------------------|
| | | UNLESS OTHERWISE SPECIFIED: | | DATE | Amphenol Canada Corp. |
| | | DIMENSIONS ARE IN MILLIMETERS | DRAWN | A. DODDS | JUN28/07 |
| | | TOLERANCES: | DESIGNED | | |
| | | FRACTIONAL: ± | CHECKED | K. LAMBIE | TBD |
| | | ANGULAR: MATCH ± BEND ± | I. E. APPRD. | | |
| | | TWO PLACE DECIMAL ± | D. A. APPRD. | | |
| | | THREE PLACE DECIMAL ± | DWG. APPRD. | | |
| | | INTERPRET GEOMETRIC TOLERANCING PER: | ENG. REL. NO. | EAR E13132 | |
| | | MATERIAL: | REF. | | |
| | | FINISH: | DIMENSIONS ARE IN | MILLIMETERS | CODE ID. NO. |
| NEXT ASSY | USED ON | APPLICATION | DO NOT SCALE DRAWING | | |

MRJ SERIES RUGGED MODULAR JACK, 8 POSITION VERTICAL, LED & TAIL LENGTH OPTIONS, FRONT PANEL MOUNT, DUST COVER, RoHS COMPLIANT

| | | |
|------------|----------------------|--------------|
| SIZE | DWG. NO. | REV |
| C | P-MRJ-518X-X1 | A |
| SCALE: 6:1 | WEIGHT: | SHEET 2 OF 2 |

X-ON Electronics

Largest Supplier of Electrical and Electronic Components

Click to view similar products for [Modular Connectors](#) / [Ethernet Connectors](#) category:

Click to view products by [Amphenol](#) manufacturer:

Other Similar products are found below :

[8949-H88/06BLKA/SN](#) [74441-0010/BKN](#) [MP1010RX-1000](#) [MP44RX-1000](#) [PHJ-4P4C-1-V-4](#) [PHP-6P6C-5](#) [GAX-3-66](#) [GAX-8-62](#) [GDCX-PA-66-50](#) [GDCX-PN-64](#) [GDCX-PN-66](#) [GDCX-PN-66-50](#) [GDLX-A-66](#) [GDLX-N-66](#) [GDLX-S-66](#) [GDLX-S-88K](#) [GDTX-S-88-50](#) [GDX-PA-1010](#) [GLX-N-1010M-BLK](#) [GLX-S-88M-BLK](#) [GMX-N-1010](#) [GMX-S-1010](#) [GMX-S-66](#) [GMX-SMT4-N-88](#) [GPX-2-64](#) [GSGX-N-2-88](#) [GSGX-N-4-88](#) [GSX-NS2-88-3.05](#) [GSX-NS2-88-3.05-50](#) [GSX-NS-88-3.68](#) [PT-108A-8C-UL](#) [PT-J951-8C](#) [PTS-J531-8CS-50UL](#) [1-1775629-2](#) [A-2014-0-4](#) [GWLX-S-88-GR](#) [GWLX-S9-88-YG](#) [DC-1021-8-WH-6](#) [1300530003](#) [1324640-4](#) [RJ11FTVC2G](#) [RJ11FTVC2N](#) [RJFTVX2SA1G](#) [132764-001](#) [1413235](#) [MP88X-1000](#) [MPS88RX-5000](#) [MRJR-5481-0F2](#) [E5288-S000K3-L](#) [E5908-15A242-L](#)