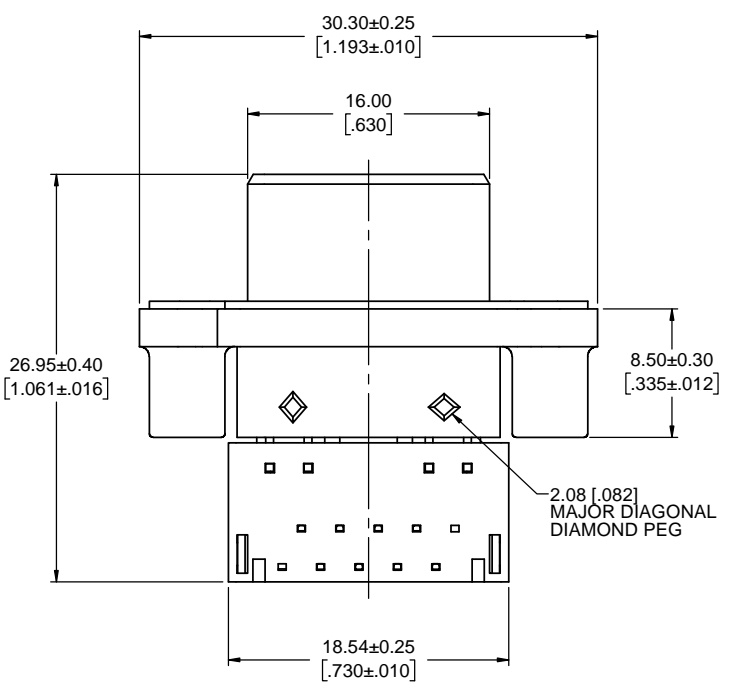
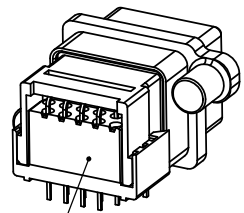
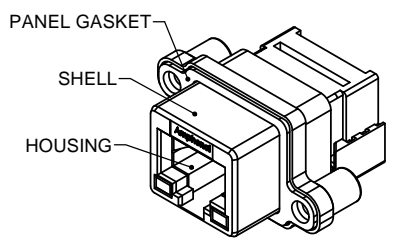
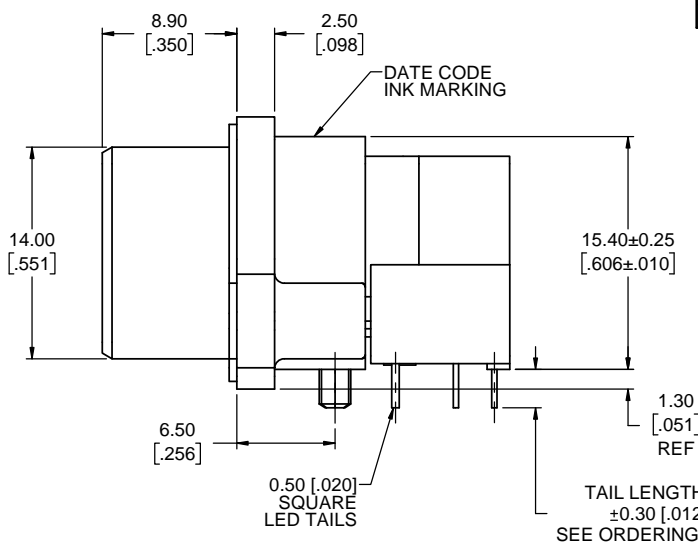
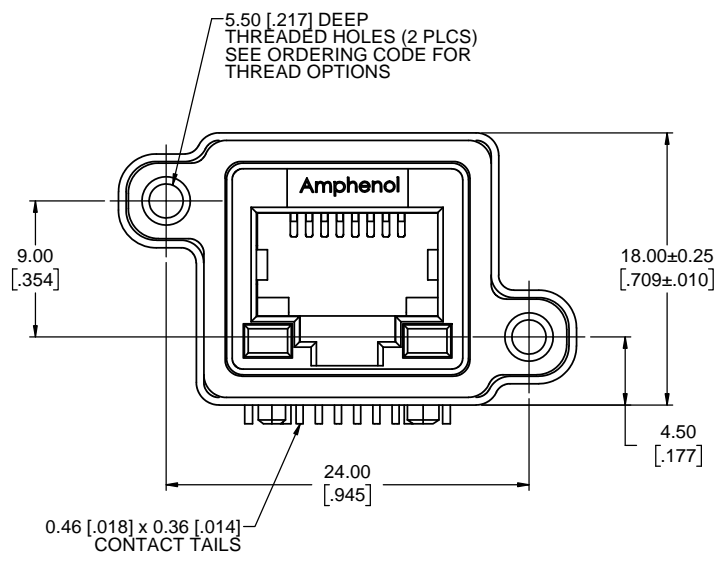


REVISIONS			
REV	DESCRIPTION, ECN, EAR NO.	DATE	APPD
C	PRODUCT DRAWING (EAR 14600)	AUG31/17	K.L.



ORDERING CODE: MRJ-63XX-X1

- SERIES, RUGGED RJ
- FILTERED RECEPTACLE, RIGHT ANGLE, PCB TAIL
- NUMBER OF CONTACTS
 - 8 = 8 CONTACTS
 - A = 10 CONTACTS
- LED OPTION
 - 0 = NONE
 - 1 = GREEN LEFT, YELLOW RIGHT
 - 4 = YELLOW LEFT, GREEN RIGHT
 - 5 = GREEN LEFT, GREEN RIGHT
- TAIL LENGTH & MOUNTING HOLE THREAD OPTION
 - 0 = TAIL LENGTH 'A' = 2.54 [.100] #4-40 UNC THREAD
 - B = TAIL LENGTH 'A' = 3.81 [.150] #4-40 UNC THREAD
 - M = TAIL LENGTH 'A' = 2.54 [.100] M3 x 0.5 THREAD
 - P = TAIL LENGTH 'A' = 3.81 [.150] M3 x 0.5 THREAD
- SINGLE PORT

NOTES:

1. MATERIAL: ALL MATERIALS ARE RoHS COMPLIANT PER EU DIRECTIVE 2011/65/EU AND AMENDMENTS
 - SHELL - DIECAST ZINC, NICKEL PLATED
 - CONTACTS - PHOSPHOR BRONZE WITH 1.27µm [50µ"] GOLD OVER 1.27µm [50µ"] MINIMUM NICKEL ON THE MATING AREA AND MATTE TIN OVER NICKEL ON THE CONTACT TAILS.
 - INSERTS - ENGINEERING THERMOPLASTIC, UL94V-0 FLAMMABILITY RATING
 - REAR INSERTS: NYLON, FRONT INSERT: CLEAR POLYCARBONATE
 - PANEL GASKET - SILICONE RUBBER
 - FERRITE - NICKEL ZINC IRON OXIDE
 - LED'S - EPOXY LENS, STEEL TAILS WITH TIN PLATING
2. ENVIRONMENTAL PERFORMANCE PER IEC 60529 CODE IP67 FOR SEAL BETWEEN MATING AREA AND PCB SIDE OF CONNECTOR. GASKET PROVIDES SEAL TO INSIDE FACE OF PANEL.
3. CURRENT RATING: 1.5 AMPERES
4. CONTACT RESISTANCE: 30 MILLIOHMS MAXIMUM
5. OPERATING TEMPERATURE: -40°C TO +105°C
6. MINIMUM IMPEDANCE (FERRITE): 38 OHMS @ 25 MHz
7. CUSTOMER TO VERIFY THAT ALL PROCESS CLEANERS ARE COMPATIBLE WITH POLYCARBONATE MATERIAL



UNLESS SPECIFIED OTHERWISE	DRAWN G.LI	JAN18/08
PRIMARY UNITS MILLIMETERS	CHECKED K.LAMBIE	JAN18/08
SECONDARY INCHES	M.E. APPD	
REFERENCE IN PARENTHESES	Q.A. APPD	
GENERAL TOLERANCES	DWG APPR.	
1 DECIMAL PLACE	ENG. REL. NO.	EAR 13217
2 DECIMAL PLACES ±0.15	REF.	
3 DECIMAL PLACES	THIRD ANGLE PROJECTION	
ANGULAR DEGREES	DO NOT SCALE DRAWING	

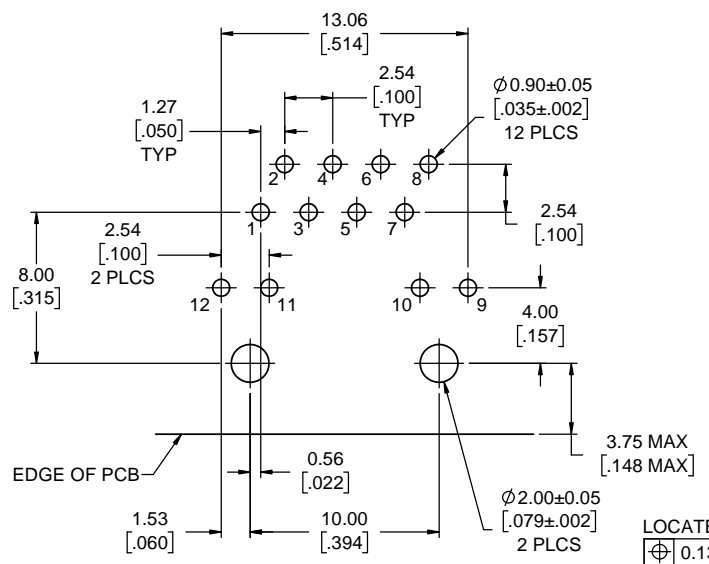
Amphenol Canada Corp.
www.amphenolcanada.com

MRJ SERIES RUGGED MODULAR JACK, EMI FILTERED, 8 & 10 POSITION RIGHT ANGLE, WITH LED, TAIL LENGTH & THREAD OPTIONS, RoHS COMPLIANT

DWG. NO. **P-MRJ-63XX-X1** REV **C**

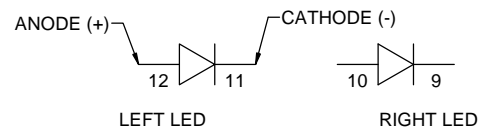
CODE ID NO. 03554 | DWG SIZE: X | SCALE: 4:1 | SHEET 1 OF 2

REVISIONS			
REV	DESCRIPTION, ECN, EAR NO.	DATE	APPD
C	PRODUCT DRAWING (EAR 14600)	AUG31/17	K.L.

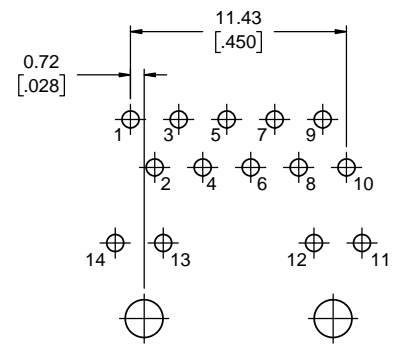


RECOMMENDED PCB LAYOUT FOR 8 POSITION COMPONENT SIDE OF BOARD

LOCATE HOLES
 \varnothing 0.13 [.005] DIA
 POSITION DIMENSIONS ARE BASIC

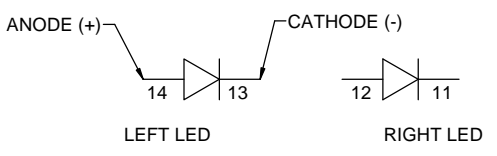


8 POSITION LED SCHEMATIC (GREEN OR YELLOW)

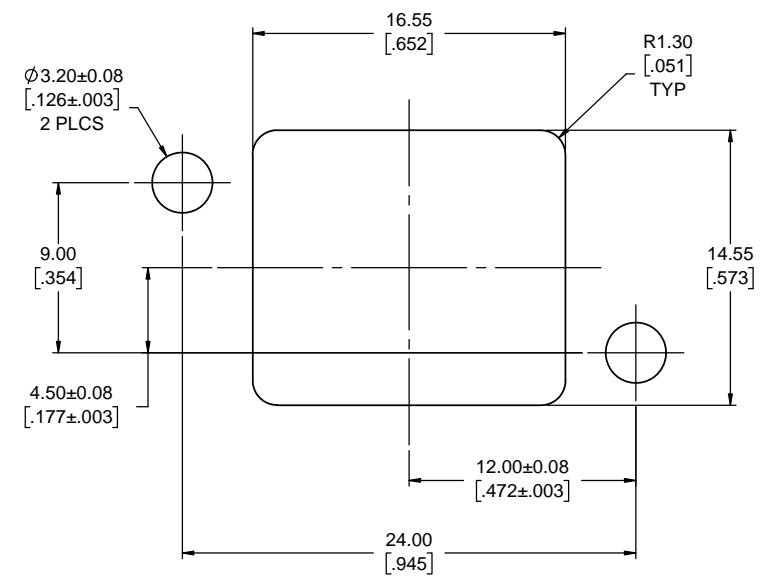


RECOMMENDED PCB LAYOUT FOR 10 POSITION COMPONENT SIDE OF BOARD

LOCATE HOLES
 \varnothing 0.13 [.005] DIA
 POSITION DIMENSIONS ARE BASIC



10 POSITION LED SCHEMATIC (GREEN OR YELLOW)



RECOMMENDED PANEL CUTOUT OUTSIDE PANEL VIEW



THIS DOCUMENT CONTAINS PROPRIETARY INFORMATION AND SUCH INFORMATION MAY NOT BE DISCLOSED TO OTHERS FOR ANY PURPOSE OR USED FOR MANUFACTURING PURPOSES WITHOUT WRITTEN PERMISSION FROM AMPHENOL CANADA CORP.

UNLESS SPECIFIED OTHERWISE	DRAWN	G.LI	JAN18/08
PRIMARY UNITS MILLIMETERS	CHECKED	K.LAMBIE	JAN18/08
SECONDARY INCHES	M.E. APPD		
REFERENCE IN PARENTHESES	Q.A. APPD		
GENERAL TOLERANCES	DWG APPR.		
1 DECIMAL PLACE	ENG. REL. NO.	EAR 13217	
2 DECIMAL PLACES ±0.15	REF.		
3 DECIMAL PLACES	THIRD ANGLE PROJECTION		
ANGULAR DEGREES	DO NOT SCALE DRAWING		

Amphenol Canada Corp.
www.amphenolcanada.com
 MRJ SERIES RUGGED MODULAR JACK, EMI FILTERED, 8 & 10 POSITION RIGHT ANGLE, WITH LED, TAIL LENGTH & THREAD OPTIONS, RoHS COMPLIANT

DWG. NO. **P-MRJ-63XX-X1** REV **C**

CODE ID NO. 03554 DWG SIZE: X SCALE: 5:1 SHEET 2 OF 2

X-ON Electronics

Largest Supplier of Electrical and Electronic Components

Click to view similar products for [Modular Connectors](#) / [Ethernet Connectors](#) category:

Click to view products by [Amphenol](#) manufacturer:

Other Similar products are found below :

[RJE231881317T](#) [MP1010RX-1000](#) [MP44RX-1000](#) [GAX-3-66](#) [GAX-8-62](#) [93606-0253](#) [GD-A-44](#) [GDCX-PA-66-50](#) [GDCX-PN-64](#) [GDCX-PN-66](#) [GDCX-PN-66-50](#) [GDLX-A-66](#) [GDLX-A-88](#) [GDLX-N-66](#) [GDLX-S-88K](#) [GDTX-S-88-50](#) [GDX-PA-1010](#) [GLX-N-1010M-BLK](#) [GLX-N-44M](#) [GLX-S-88M-BLK](#) [GMX-N-1010](#) [GMX-S-1010](#) [GMX-S-66](#) [GMX-SMT2-N-1010](#) [GMX-SMT2-N-64-50](#) [GMX-SMT2-S6-88](#) [GMX-SMT4-N-88](#) [GPX-2-64](#) [GRT1-BT1-5](#) [GSGX-N-2-88](#) [GSX-NS2-88-3.05](#) [GSX-NS2-88-3.05-50](#) [GSX-NS-88-3.05-30](#) [GSX-NS-88-3.05-50](#) [GSX-NS-88-3.68](#) [1-1775629-2](#) [GWLX-S-88-GR](#) [GWLX-S9-88-YG](#) [1300500326](#) [1300500227](#) [1300530003](#) [1300570002](#) [1324640-4](#) [RJ11FTVC2G](#) [RJ11FTVC2N](#) [RJFTVX2SA1G](#) [132764-001](#) [1400000](#) [1413176](#) [1413235](#)