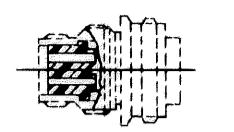
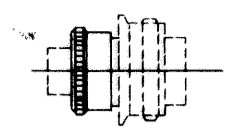
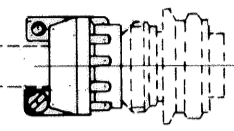
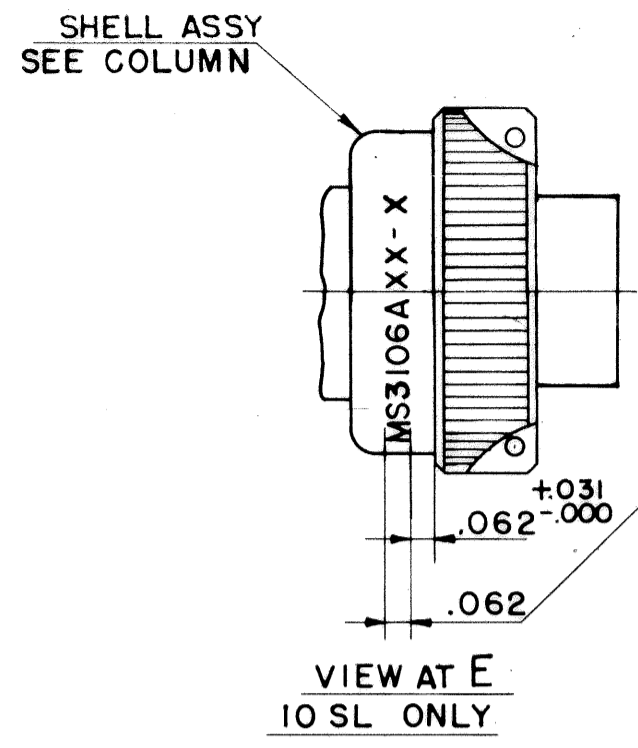


| REL | WAS | DATE | D'MAN | APPD. |
|---------------|--|---------|-----------|-------|
| 32508-157 | | | | |
| 1 33780-57 | ADD. NOTE II & DATA. | 1-21-58 | MOORE | |
| 2 35826-4 | RELOC & REV C DIM AND .000 +.016 -.047 | 8-30-59 | BARTKOW | |
| A1 36200 -27 | .188(16M), .250(12) & .500(4) (SOLDER WELL DEPTH); REM SOLDER WELL DATA FOR 16 | 2-11-60 | MARKOWSKI | |
| A 36525 -325 | REM PD COL (A & V THD) REV. NOTE 3, Q DIA COL, ADD NOTE 12 | 3-17-60 | MARKOWSKI | |
| A3 36525 -448 | ADDED NOTE 13, REV NOTE 12 | 7-5-60 | PAWLICK | |
| A4 42525 -45 | MIL-C-5015C (NOTE 1) | 10-2-63 | MILLAR | |
| A5 51175 -1 | REM NOTE II, REVISION LETTER (C) (3 PLCS) | 11-7-69 | RANDALL | |
| A 53249 -14 | ADD. 9-3895 (PRO SPEC) REV STAMPING NOTE | 1-6-72 | RANDALL | |
| B 76208 -1 | (CL II) REV MS COL | 4/30/85 | BOWKER | |

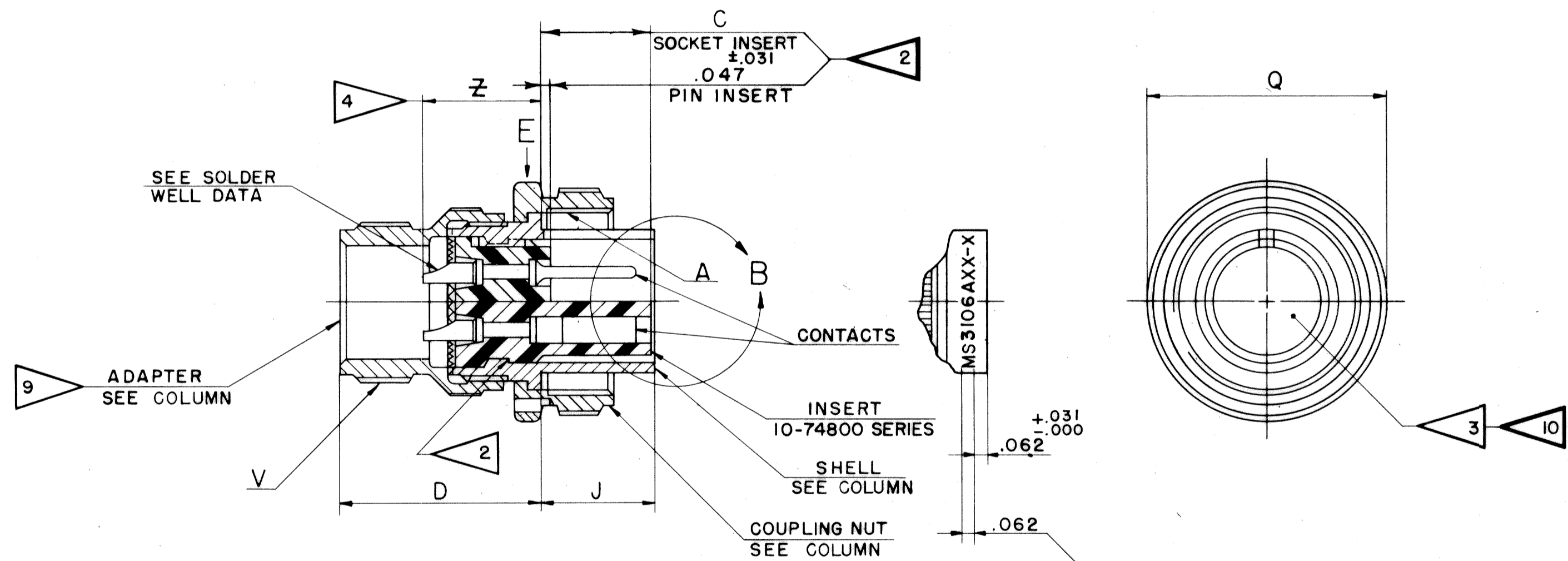
ACCESSORIES
(NOT PART OF STANDARD ASSEMBLY)

| | |
|---|--|
|  GROMMET 10-40800 SERIES |  GROMMET RETAINING NUT SEE TABLE |
|  CABLE CLAMP 10-35900-XX3 SERIES | |



STAMP PER 9-2811
EXAMPLE:
MS3106A10SL-3S BENDIX-7139

NUT MUST TURN FREELY
AFTER STAMPING



VIEW B
EXCEPT IOSL

STAMP PER 9-2811
MS NO., "BENDIX" & DATE CODE (9-3895)
OPPOSITE KEYWAY
EXAMPLE:
MS3106A20-12S BENDIX -7139

FOR SUFFIX OTHER THAN "P" OR "S",
STAMP PER 9-2437
(SUFFIX OF MS NO. ONLY)
EXAMPLE:
MS3106A20-12SX BENDIX -7139

10-168608 THRU
10-168640

USE OF THIS DOCUMENT IS UNLIMITED. DOCUMENTS REFERENCED HEREON CONTAIN LIMITED RIGHTS DATA.

| CONTACT SIZE | 0 | 4 | 8 | 12 | 16M |
|--------------------------|---|---|---|---|---|
| WELL DIA | .469 ^{+0.005} _{-.003} | .332 ^{+0.005} _{-.003} | .209 ^{+0.004} _{-.002} | .116 ^{+0.004} _{-.002} | .078 ^{+0.004} _{-.002} |
| WELL DEPTH ±.031 .000 | .625 | .625 | .500 | .375 | .250 |

| | | | | | | | | | |
|------------------|------------------------------|---|--|--|--|--|----------------------|--|--|
| MATERIAL SPEC. | PROCESS SPEC. SEE SHEET 2 | SCINTILLA MAGNETO DIVISION BENDIX AVIATION CORPORATION SYDNEY, N. Y., U.S.A. | | | | TOLERANCES UNLESS OTHERWISE SPECIFIED | | | |
| HEAT TREAT SPEC. | FINISH SPEC. | NAME CONNECTOR, ELECTRICAL PLUG, TYPE C () MC | | | | FRACTIONS ± ~ | ANGLES ± ~ | | |
| | | D'MAN A S MEYER | | | | DECIMALS ±.010 | CONCENTRICITY FIR | | |
| | | CHECKER BRANNIC | | | | SURFACE FINISHES MICRO-INCHES RMS VALUE MAX | | | |
| | | MATERIAL 4-24-57 | | | | NEXT ASSEMBLY | | | |
| | | STDS 5-10-57 | | | | WEIGHT-LBS SEE PARTS LIST | | | |
| | | CH. D'MAN APPROVED 5-10-57 | | | | SUPERSEDES AND IS NOT INTERFERED BY | | | |
| | | SCALE NONE | | | | SUPERSEDED BY 10-168608 THRU 10-168640 | | | |
| | | TOOL ACC. COM. REC. 22563-8 | | | | DWG SIZE C TAR. CODE 77820 SHEET 1 OF 2 | | | |

SEE SHEET 2.
NOTES: REF SYMBOL

| REL | 32500-157 | WAS | DATE | D'MAN | APPD. |
|-----|------------|-------------|----------|-----------|--------------------|
| 1 | 33750-57 | SEE SHEET I | 1-21-58 | MOORE | <i>[Signature]</i> |
| 2 | 35826-4 | SEE SHEET I | 8-30-59 | BARTKOW | <i>[Signature]</i> |
| A1 | 36200-27 | SEE SHEET I | 2-11-60 | Markowski | <i>[Signature]</i> |
| A2 | 36525-32.5 | SEE SHEET I | 3-17-60 | Markowski | <i>[Signature]</i> |
| A3 | 36525-44.8 | SEE SHEET I | 7-5-60 | PAWLICK | <i>[Signature]</i> |
| A4 | 42525-45 | SEE SHEET I | 10-26-63 | MILLAR | <i>[Signature]</i> |

A5
A6
B
SEE SHEET I FOR ALL CHANGES

| ASSEMBLY NO. | MS NO. | DIMENSIONS | | | | | | | | DETAILS | | | ACCESSORY |
|--------------|-------------|-------------------------|---------------------|-------------|------------|-----------------|-------------------------------------|------------|---------------------------|-----------------|--------------|-----------------------------|-----------|
| | | A THREAD CLASS 2B | G +.047 -.000 | D | J ±.005 | Q DIA MAX | V THREAD (PLATED) CLASS 2A | Z ±.045 | SHELL | COUPLING NUT | ADAPTER | GROMMET RETAINING NUT | |
| 10-168608 - | 3106 A 8S - | .5000-28 UNEF | .531 | .859 ±.030 | .531 | .741 | .5000-28 UNEF | .562 | 10-37266 - 8 | 10-37265 - 8 | 10-37267 - 8 | 10-37269 - 8 | |
| 10-168610 - | IOS - | .6250-24 NEF | .531 | .937 ±.030 | .531 | .869 | .5000-28 UNEF | | 10-37266-10 | 10-37265 -10 | -10 | -10 | |
| 10-168611 - | IOSL - | .6250-24 NEF | .531 | .937 ±.025 | .531 | .946 | .6250-24 NEF | | 10-113488-11 (SHELL ASSY) | | -12 | -12 | |
| 10-168612 - | 12S - | .7500-20 UNEF | .531 | .937 ±.030 | .531 | .995 | | | 10-37266 - 12 | 10-37265 - 12 | -12 | -12 | |
| 10-168613 - | 12 - | .7500-20 UNEF | .719 | 1.124 ±.030 | .719 | .995 | | .812 | -13 | -13 | -13 | -13 | |
| 10-168614 - | 14S - | .8750-20 UNEF | .531 | .937 ±.030 | .531 | 1.123 | .7500-20 UNEF | .562 | -14 | -14 | -14 | -14 | |
| 10-168615 - | 14 - | .8750-20 UNEF | .719 | 1.124 ±.030 | .719 | 1.123 | .7500-20 UNEF | .812 | -15 | -15 | -15 | -15 | |
| 10-168616 - | 16S - | 1.0000-20 UNEF | .531 | .937 ±.030 | .531 | 1.250 | .8750-20 UNEF | .562 | -16 | -16 | -16 | -16 | |
| 10-168617 - | 16 - | 1.0000-20 UNEF | .719 | 1.124 ±.030 | .719 | 1.250 | .8750-20 UNEF | .812 | -17 | -17 | -17 | -17 | |
| 10-168618 - | 18 - | 1.1250-18 NEF | | 1.219 ±.030 | | 1.333 | 1.0000-20 UNEF | | -18 | -18 | -18 | -18 | |
| 10-168620 - | 20 - | 1.2500-18 NEF | | 1.125 ±.030 | | 1.461 | 1.1875-18 NEF | | -20 | -20 | -20 | -20 | |
| 10-168622 - | 22 - | 1.3750-18 NEF | | 1.219 ±.030 | | 1.588 | 1.1875-18 NEF | | -22 | -22 | -22 | -22 | |
| 10-168624 - | 24 - | 1.5000-18 NEF | | 1.251 ±.030 | | 1.715 | 1.4375-18 NEF | | -24 | -24 | -24 | -24 | |
| 10-168628 - | 28 - | 1.7500-18 NS | | 1.470 ±.030 | | 1.968 | 1.4375-18 NEF | | -28 | -28 | -28 | -28 | |
| 10-168632 - | 32 - | 2.0000-18 NS | | 1.439 ±.030 | | 2.209 | 1.7500-18 NS | | -32 | -32 | -32 | -32 | |
| 10-168636 - | 36 - | 2.2500-16 UN | | 1.500 ±.030 | | 2.463 | 2.0000-18 NS | | -36 | -36 | -36 | -36 | |
| 10-168640 - | 40 - | 2.5000-16 UN | | 1.469 ±.030 | | 2.718 | 2.2500-16 UN | | -40 | -40 | -40 | -40 | |

10-168608 THRU
10-168640



1. THE UNITS ILLUSTRATED MEET THE REQUIREME OF MS3016A, PER SPEC MIL-C-5015(D).
2. DIMENSIONS MUST BE MAINTAINED WHEN INSERTS ARE PRESSED FIRMLY AGAINST INDICATED SHOULDER.
3. FOR CONTACT SIZE, SPACING, & SERVICE RATING, SEE DRAWINGS MS33680 THRU MS33690.
4. INCREASE Z DIMENSION BY .312 FOR SIZE "O" CONTACT ONLY.
5. TO COMPLETE ASSEMBLY NUMBER & MS NUMBER, ADD APPLICABLE INSERT ARRANGEMENT SUFFIX TO BASE NUMBERS LISTED ABOVE. (FOR ALTERNATE ARRANGEMENTS, REFER TO 9-2437.) TO DETERMINE DESIRED INSERT ARRANGEMENT, SEE PARTS LISTS 10-168608 THRU 10-168640.
6. SEE WORK ORDER FOR PERMISSIBLE ADDITIONAL OR ALTERNATE STAMPING.
7. SEE DRAWINGS 10-168008 THRU 10-168040 10-168208 THRU 10-168240 FOR REQUIRED MATING RECEPTACLE ASSEMBLIES.
8. ALL LOCKWIRE HOLES ARE .045 DIA MIN.
9. ADAPTER MUST BE REMOVED WHEN GROMMET RETAINING NUT IS USED.
10. INSERTS AND CONTACTS ARE REMOVABLE.
- 11.
12. FOR PART NUMBERS 10-168617-13, 10-168618-15, & 61 - SEE INDIVIDUAL DRAWINGS 10-168617-13, 10-168618-15, & 61-00000.
13. FOR DIMENSIONS AND STAMPING ON ALL ARRANGEMENTS WITH SUFFIX -50 OR ABOVE SEE INDIVIDUAL DRAWING OF SAME SHELL SIZE & SUFFIX IN 10-41600 SERIES.

| | | | | | | | | | |
|------------------|--|------------------------------------|--|--|--|---|---------------|---|--|
| MATERIAL SPEC. | | PROCESS SPEC. TEST 9-3106-5 | | SCINTILLA MAGNETO DIVISION BENDIX AVIATION CORPORATION SIDNEY, N. Y., U.S.A. | | | | TOLERANCES UNLESS OTHERWISE SPECIFIED | |
| HEAT TREAT SPEC. | | ASSY 9-3103-1 | | | | | | NAME CONNECTOR ELECTRICAL PLUG, TYPE C () MC | |
| TOOL ACC. | | 9-2811, 9-2437 9-3895 | | D'MAN CHECKER MAT. ST'DS CH. D'MAN APPROVED SCALE | | DECIMALS ±.010 | CONCENTRICITY | | |
| | | CON. REC 21549-5 4-25-57 5-9-57 | | A.SMEY BALANTIC 5-10-57 5-11-57 | | SURFACE ROUGHNESS MICRO-INCHES RMS VALUE MAX | | WEIGHT-LBS SEE PARTS LIST | |
| | | | | NONE | | NEXT ASSEMBLY | | SUPERSEDES AND IS NOT INTERCHANGEABLE | |
| | | | | | | SUPERSEDED BY | | 10-168608 THRU 10-168640 | |
| | | | | | | REF | | 10-168608/40 | |

X-ON Electronics

Largest Supplier of Electrical and Electronic Components

Click to view similar products for [Circular MIL Spec Connector](#) category:

Click to view products by [Amphenol](#) manufacturer:

Other Similar products are found below :

[89075GULPR](#) [0025-262-542](#) [0025-264-3014](#) [58-570121-04S](#) [0134-213-1208](#) [0134-213-2209](#) [0025-258-000](#) [60-042022-07P](#) [60-042022-19P](#)
[60-042022-23P](#) [60-042217-10P](#) [0114-201-1278](#) [012-0467-000](#) [602GB06EG24-61SN](#) [0134-201-1207](#) [0134-213-1006](#) [6104-207-2302](#) [6104-](#)
[208-1902](#) [61-168211-04P](#) [61-168617-10P](#) [6131-202-19149P](#) [6131-204-21149P](#) [6131-208-13149P](#) [6131-209-17149P](#) [6131-210-11149P](#) [6131-](#)
[211-19149P](#) [6131-216-19149P](#) [6131-259-21149P](#) [6131-259-23149P](#) [6131-265-17149P](#) [6131-265-19149P](#) [CS3100A18-1P-472](#) [CS3100A-36-](#)
[77P](#) [CS3101A-16-55P](#) [CS3102A-10SL-55P](#) [CS3102A-14S-58P](#) [CS3102A-32-17P](#) [CS3102A32-25S](#) [CS3102C18-4P-472](#)
[CS3106A10SL3S004](#) [CS3106A-18-73S](#) [CS3108A-14S-52S](#) [CS3108A-28-51S](#) [6162-233-1277](#) [6162-324-1231](#) [M243082296Z](#)
[M2884010AC1S1](#) [CT0-24-10SC](#) [CT0M20-7PCAU](#) [M28840/17AC1G3](#)