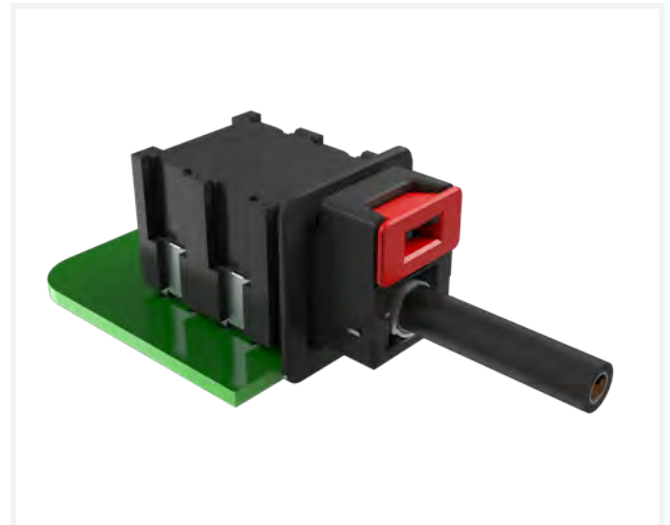


# NETBridge™ Automotive Ethernet Connector System

## COMPLIANT WITH USCAR-2 SPECIFICATIONS; IDEAL FOR AUTOMOTIVE APPLICATIONS

NETBridge™ Automotive Ethernet Connector System is designed for the automotive environment and can transmit up to 100Mbit/s and 1Gbit/s according to IEEE 100BASE-T1 and 1000BASE-T1. These automotive grade Ethernet connection system uses twisted-pair cables to transmit data. NETBridge™ is developed in accordance with USCAR-2, VDAAK LV214 and ISO 8092-2.

- 0.50mm x 0.40mm tab terminal system
- Temperature range -40°C to +100°C in sealed and unsealed configurations
- 10G+ and waterproof versions are in development
- CCPA for secondary lock of contact carrier assembly
- Optional CPA for secondary lock in mated condition



### TARGET MARKETS



### FEATURES

- Automotive grade Ethernet application
- Scalable port options with 1x1 to 1x7 ports for right angle and vertical connectors; 1x1, 1x5 for inline adaptor
- Touch proof design
- Mechanical and visible color coding
- Mechanically robust design
- CCPA for secondary lock of contact carrier

### BENEFITS

- Offers higher data transmission rate
- Design flexibility
- Contact pin protection
- Avoids mismatching
- Easy installation
- Ensures proper connector assembly

## TECHNICAL INFORMATION

### MATERIAL

- Housing: High temperature thermoplastic, UL 94V-0
- Contacts: Brass
- Shell: Phosphor Bronze

### MECHANICAL PERFORMANCE

- Retention Force >= 110 Newtons
- Unmating Force <= 75 Newtons
- Durability: 10 cycles

### ELECTRICAL PERFORMANCE

- Low Level Contact Resistance: 15mΩ max.
- Contact Current Rating: 3A
- Dielectric Withstanding Voltage: 500VAC

### PACKAGING

- Tray
- Tape & Reel

### SPECIFICATION

- Amphenol Product Specification: NETBridge™ series

### ENVIRONMENTAL

- Humidity: 40 cycles between -40°C to +100°C. Relative Humidity 0% to 95%
- Vibration: V1 Class
- Thermal Shock: 100 cycles between -40°C to +100°C

### APPROVALS AND CERTIFICATION

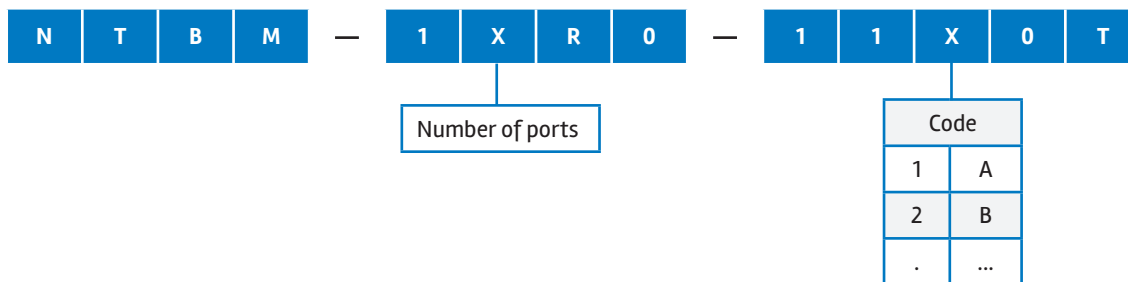
- USCAR-2 Compliant
- IATF Production Compliant
- RoHS
- REACH/SVHC
- Low Halogen

### TARGET MARKETS/APPLICATIONS



Body Control  
 Safety  
 Security and Comfort  
 Advanced Driver Assistance Systems (ADAS)  
 Infotainment

## PART NUMBER SELECTOR



## PART NUMBERS

### PCB Side Connector

Description	Data Rate	Code	Part Numbers
NETBridge™, 1x1, Right Angle, DIP, 100Mbit/s, Code A	100M	A	NTBM11ROU01110T
NETBridge™, 1x2, Right Angle, DIP, 100Mbit/s, Code A	100M	A	NTBM12ROU01110T
NETBridge™, 1x3, Right Angle, DIP, 100Mbit/s, Code A	100M	A	NTBM13ROU01110T
NETBridge™, 1x4, Right Angle, DIP, 100Mbit/s, Code A	100M	A	NTBM14ROU01110T
NETBridge™, 1x5, Right Angle, DIP, 100Mbit/s, Code A	100M	A	NTBM15ROU01110T
NETBridge™, 1x6, Right Angle, DIP, 100Mbit/s, Code A	100M	A	NTBM16ROU01110T
NETBridge™, 1x7, Right Angle, DIP, 100Mbit/s, Code A	100M	A	NTBM17ROU01110T
NETBridge™, 1x1, Right Angle, DIP, 1Gbit/s, Code A	1G	A	NTBM11R1U01110T
NETBridge™, 1x2, Right Angle, DIP, 1Gbit/s, Code A	1G	A	NTBM12R1U01110T
NETBridge™, 1x3, Right Angle, DIP, 1Gbit/s, Code A	1G	A	NTBM13R1U01110T
NETBridge™, 1x4, Right Angle, DIP, 1Gbit/s, Code A	1G	A	NTBM14R1U01110T
NETBridge™, 1x5, Right Angle, DIP, 1Gbit/s, Code A	1G	A	NTBM15R1U01110T
NETBridge™, 1x6, Right Angle, DIP, 1Gbit/s, Code A	1G	A	NTBM16R1U01110T
NETBridge™, 1x7, Right Angle, DIP, 1Gbit/s, Code A	1G	A	NTBM17R1U01110T

### PCB Side Vertical Connector

Description	Data Rate	Code	Part Numbers
NETBridge™, 1x1, Vertical, DIP, Code A	100M	A	NTBM11V1U01110T
NETBridge™, 1x5, Vertical, DIP, Code A	100M	A	NTBM15V1U01110T

### Standard cable

Description	Length	Code	Part Numbers
NETBridge™ 1x1 to 1x1 Cable	1001mm	A	CAAN2111111000
NETBridge™ 1x2 to 1x2 Cable	1001mm	A	CAAN2211211000
NETBridge™ 1x3 to 1x3 Cable	1002mm	A	CAAN2311311000
NETBridge™ 1x4 to 1x4 Cable	1003mm	A	CAAN2411411000
NETBridge™ 1x5 to 1x5 Cable	1004mm	A	CAAN2511511000
NETBridge™ 1x6 to 1x6 Cable	1005mm	A	CAAN2611611000
NETBridge™ 1x7 to 1x7 Cable	1006mm	A	CAAN2711711000

### Inline Adaptor

Description	Code	Part Numbers
NETBridge™, 1X1, Inline Adaptor	A+B	NTBA1120002T
NETBridge™, 1X5, Inline Adaptor	A+B	NTBA1520002T

## X-ON Electronics

Largest Supplier of Electrical and Electronic Components

*Click to view similar products for [Automotive Connectors](#) category:*

*Click to view products by [Amphenol](#) manufacturer:*

Other Similar products are found below :

[003-018-000](#) [60403001](#) [60993906-B](#) [M902-2131](#) [M902-2161](#) [72.330.1035.1](#) [73.353.4028.0](#) [F119300-B](#) [F166900](#) [F258300-B](#) [F358300-B](#)  
[F407400](#) [F444110](#) [F487000](#) [F509500B-B](#) [827153-1](#) [8N1515-32-24P](#) [9-1326729-8](#) [925474-1](#) [928905-1](#) [964562-4](#) [968782-1](#) [GT17SA-8DS-](#)  
[HU](#) [98891-1012](#) [98947-1016](#) [12004475-L](#) [12010290](#) [12010309-B](#) [12015454](#) [12020219-B](#) [12020308](#) [12041318-B](#) [12052225-L](#) [12052466](#)  
[12059125](#) [12064869](#) [12004327-B](#) [12010503-B](#) [12015308](#) [12015384](#) [12015909](#) [1-21030-1](#) [12041254](#) [12041318](#) [12047946-B](#) [12047957](#)  
[12047957-L](#) [12059473](#) [12066261](#) [12110546](#)