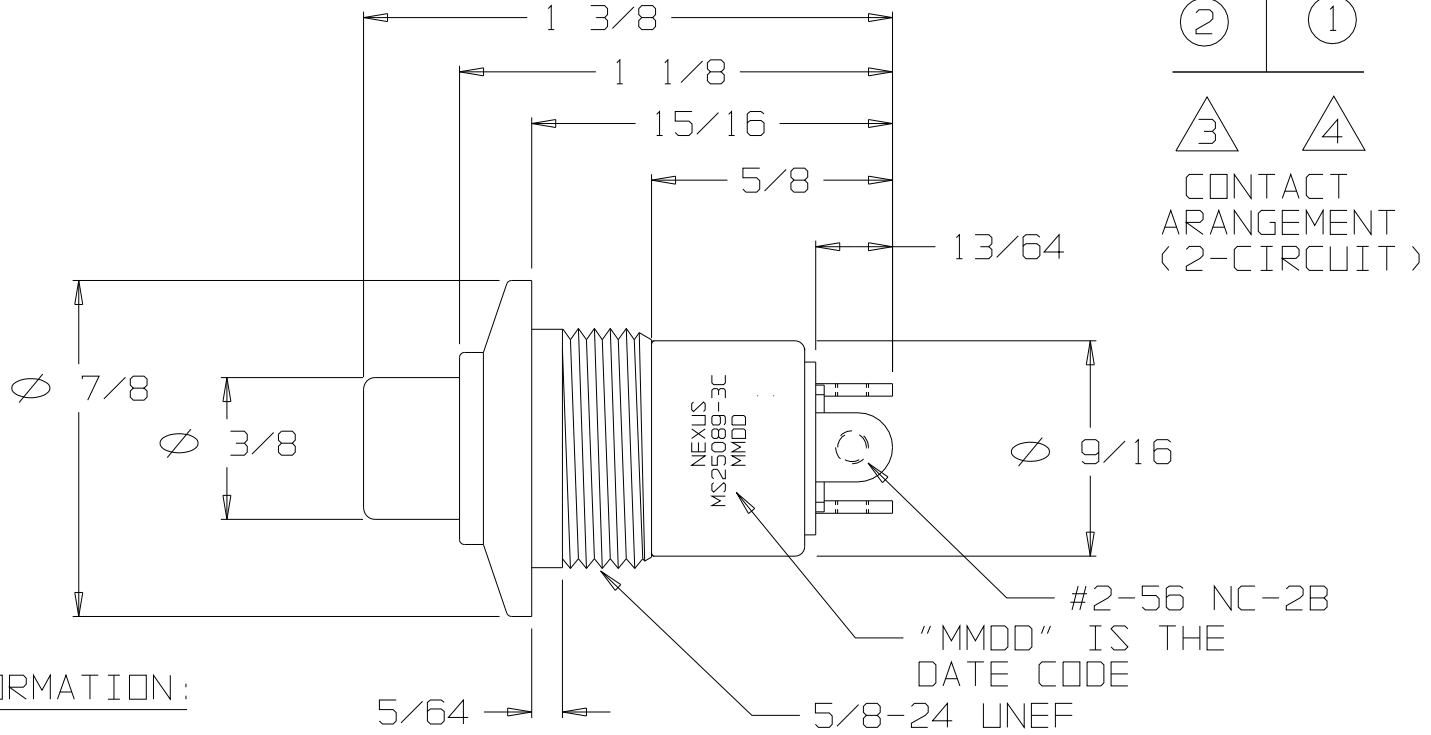


FOR REFERENCE ONLY

A NX303CB1B



ORDERING INFORMATION:

NX303CB1B  
SWITCH ONLY  
NX303CB1B-60  
SWITCH & MOUNTING NUT  
AND LOCK WASHER  
NX303CB1B-61  
SWITCH, MOUNTING NUT  
AND LOCK WASHER &  
TERMINAL HARDWARE

DUSTPROOF MOMENTARY SWITCH  
2 CIRCUIT (CAN BE JUMPERED FOR SPDT)  
ADAPTER TYPE "C", COLOR BLACK  
BUTTON #1, COLOR RBLACK

THIS DOCUMENT CONTAINS PROPRIETARY INFORMATION OF NEXUS, INCORPORATED AND SUCH INFORMATION MAY NOT BE DISCLOSED TO OTHERS FOR ANY PURPOSE OR USED FOR ANY PURPOSE WITHOUT THE WRITTEN CONSENT OF NEXUS.

DWN. BY EWT	DATE 3/8/05	MATERIAL N/A
CHECKED BY	DATE	FINISH N/A
APPR. BY	DATE	WEIGHT ——— SCALE 2:1
UNLESS OTHERWISE SPECIFIED DIMENSIONS ARE IN INCHES TOLERANCES ON		TITLE SWITCH MOMENTARY MS25089-3C
.XX	.XXX	NEXUS STAMFORD, CONN
———	±.003	
ANGLES ±.5°		DWG. NO. NX303CB1B
LET.	REVISION	DO NOT SCALE DWG. SHEET 1 OF 1

LET.	REVISION	CN #	DATE	CHK.
------	----------	------	------	------

## X-ON Electronics

Largest Supplier of Electrical and Electronic Components

*Click to view similar products for [Pushbutton Switches](#) category:*

*Click to view products by [Amphenol](#) manufacturer:*

Other Similar products are found below :

[8940K2012](#) [LW1L-M1C10V-A](#) [LW1L-M1C70-A](#) [LW2L-A1C20M-GD](#) [LW2L-M1C20M-A](#) [60324L](#) [M22-D-R-GB0/K11](#) [M7E-HRN2](#)  
[67021K512](#) [67081K512X](#) [701PB580](#) [7190K101](#) [7199K101](#) [810K12910](#) [810KSV30B](#) [MML21EA2ADK](#) [MML21KA3ABK](#)  
[MML23KA3AC05K-001](#) [MML23KW3AA01W](#) [8418K2](#) [8442K3](#) [8450K1](#) [860K11911T01A](#) [861901](#) [861K11911T01A07](#)  
[861K13810T00A14](#) [861K13911](#) [8646AB6X718UL](#) [8646ABUL](#) [9001KXRK](#) [907AYY100](#) [PMHD155A1](#) [95-313.000](#)  
[9533CD4+U574+U4922](#) [95-414.000](#) [99-450.837](#) [99-453.837](#) [PV3H2B0NN-341](#) [1203MRA](#) [A22NZBGANGA](#) [A22NZBMMNGA](#)  
[A22NZBNANGA](#) [A22NZMPATRA](#) [A2PMA1X03EC56](#) [A3A-5123-02](#) [A3A-7140](#) [A3A-7310](#) [A3A-7340](#) [A3U-TMW-A2C-5M](#) [A595](#)