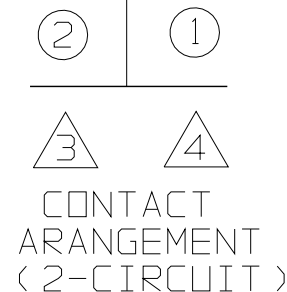
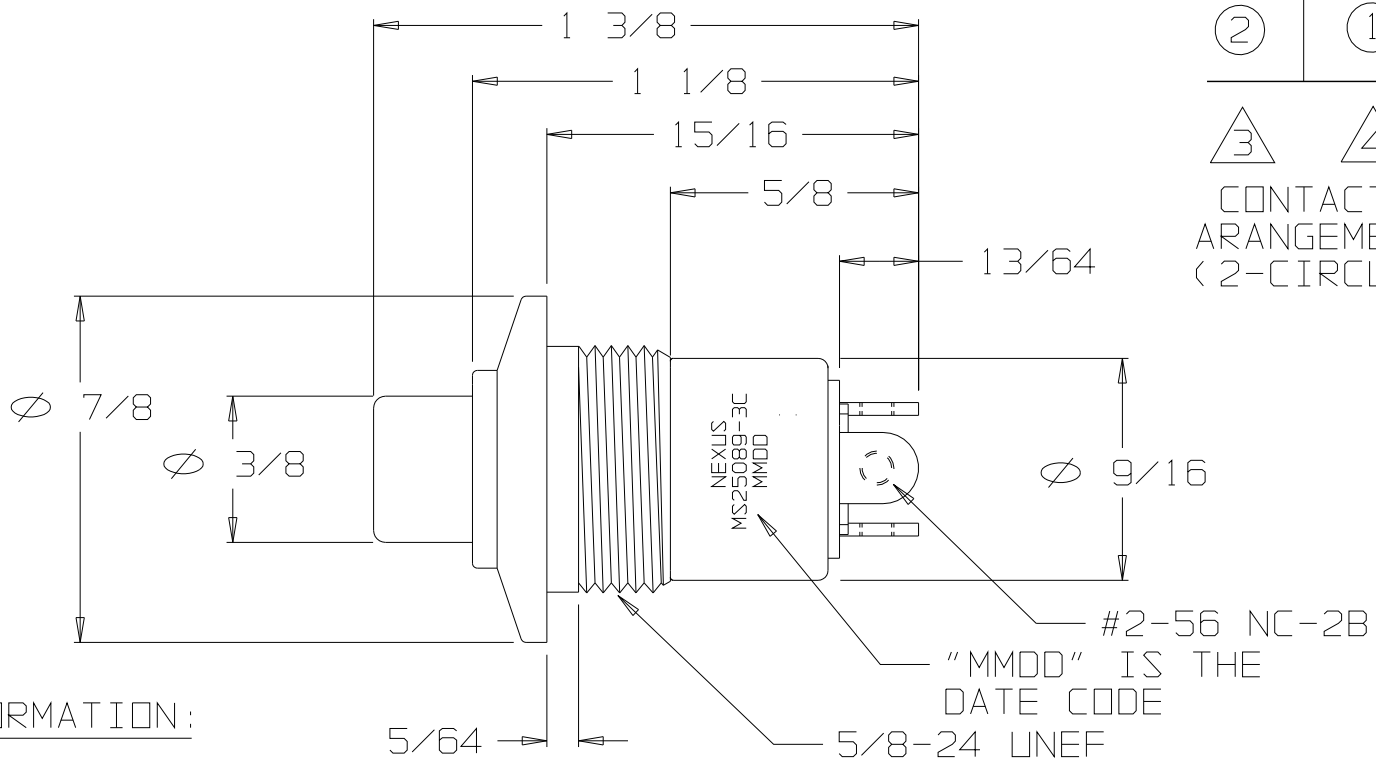


FOR REFERENCE ONLY

A NX303CB1B



ORDERING INFORMATION:

NX303CB1B
SWITCH ONLY
NX303CB1B-60
SWITCH & MOUNTING NUT
AND LOCK WASHER
NX303CB1B-62
SWITCH, MOUNTING NUT
AND LOCK WASHER &
TERMINAL HARDWARE

DUSTPROOF MOMENTARY SWITCH
2 CIRCUIT (CAN BE JUMPED FOR SPDT)
ADAPTER TYPE "C", COLOR BLACK
BUTTON #1, COLOR RBLACK

THIS DOCUMENT CONTAINS PROPRIETARY INFORMATION OF NEXUS, INCORPORATED AND SUCH INFORMATION MAY NOT BE DISCLOSED TO OTHERS FOR ANY PURPOSE OR USED FOR ANY PURPOSE WITHOUT THE WRITTEN CONSENT OF NEXUS.

OWN. BY	EWT	DATE	3/8/05	MATERIAL	N/A	<p>NEXUS STAMFORD, CONN</p> <p>SIZE A DWG. NO. NX303CB1B</p>
CHECKED BY		DATE		FINISH	N/A	
APPR. BY		DATE		WEIGHT	SCALE 2:1	
UNLESS OTHERWISE SPECIFIED DIMENSIONS ARE IN INCHES TOLERANCES ON				TITLE	SWITCH MOMENTARY MS25089-3C	
B	REVISION	208	7/21/14	HR		<p>DO NOT SCALE DWG. SHEET 1 OF 1</p>
LET.	REVISION	CN #	DATE	CHK.		

X-ON Electronics

Largest Supplier of Electrical and Electronic Components

Click to view similar products for [Pushbutton Switches](#) category:

Click to view products by [Amphenol](#) manufacturer:

Other Similar products are found below :

[8940K2012](#) [LW1L-M1C10V-A](#) [LW1L-M1C70-A](#) [LW2L-A1C20M-GD](#) [LW2L-M1C20M-A](#) [60324L](#) [M22-D-R-GB0/K11](#) [M7E-HRN2](#)
[67021K512](#) [67081K512X](#) [701PB580](#) [7190K101](#) [7199K101](#) [810K12910](#) [810KSV30B](#) [MML21EA2ADK](#) [MML21KA3ABK](#)
[MML23KA3AC05K-001](#) [MML23KW3AA01W](#) [8418K2](#) [8442K3](#) [8450K1](#) [860K11911T01A](#) [861901](#) [861K11911T01A07](#)
[861K13810T00A14](#) [861K13911](#) [8646AB6X718UL](#) [8646ABUL](#) [9001KXRK](#) [907AYY100](#) [PMHD155A1](#) [95-313.000](#)
[9533CD4+U574+U4922](#) [95-414.000](#) [99-450.837](#) [99-453.837](#) [PV3H2B0NN-341](#) [1203MRA](#) [A22NZBGANGA](#) [A22NZBMMNGA](#)
[A22NZBNANGA](#) [A22NZMPATRA](#) [A2PMA1X03EC56](#) [A3A-5123-02](#) [A3A-7140](#) [A3A-7310](#) [A3A-7340](#) [A3U-TMW-A2C-5M](#) [A595](#)