

Bushless version

## FEATURES

- Carbon resistive element
- Dust proof enclosure
- Polyester substrate
- Modular gang type (up to 4)
- Self extinguishable material UL 94-V0
- Upon request:
  - Metallic support
  - Stereo matching
  - Switch
  - Nut & washer
  - Bushless option available

## MECHANICAL SPECIFICATIONS

- Mechanical rotation angle:  $300^\circ \pm 5^\circ$
- Electrical rotation angle:  $280^\circ \pm 20^\circ$
- Torque: 0.5 to 1.5 Ncm. (0.7 to 2.1 in-oz)
- Stop torque:  $> 40$  Ncm. ( $> 56$  in-oz)
- Max. torque nut (binding out):  $< 80$  Ncm. (112 in-oz)
- Thrust and pull in the shaft:  $> 25$  N

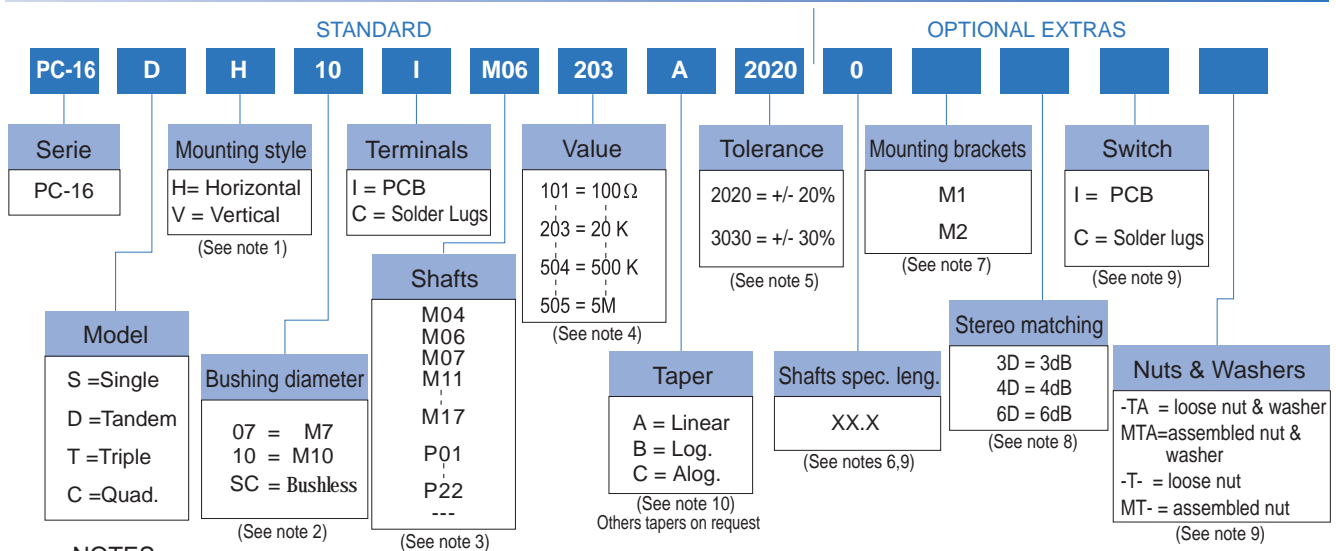
## ELECTRICAL SPECIFICATIONS

- Range of values (\*)  $100\Omega \leq R_n \leq 5$  M (Decad. 1.0 - 2.0 - 2.2 - 2.5 - 4.7 - 5.0)
- Tolerance (\*):  $100\Omega \leq R_n \leq 1$  M  $\Omega$  .....  $\pm 20\%$   
 $1$  M  $\Omega < R_n \leq 5$  M  $\Omega$  .....  $\pm 30\%$
- Max. Voltage: 250 VDC (lin) 125 VDC (no lin)
- Nominal Power 50°C (122°F) (see power rating curve) 0.2 W (lin) 0.1 W (no lin)
- Taper (\*) (Log. & Alog. only  $R_n > 1$  K) Lin ; Log; Alog.
- Residual resistance:  $\leq 0.1\%$   $R_n$  (2  $\Omega$  min.)
- Equivalent Noise Resistance:  $\leq 3\%$   $R_n$  (3  $\Omega$  min.)
- Operating temperature\*\*:  $-25^\circ\text{C} + 70^\circ\text{C}$  ( $-13^\circ\text{F} + 158^\circ\text{F}$ )

\* Others upon request

\*\* Up to 85°C depending on application

## HOW TO ORDER



### NOTES:

- (1) Mounting style: Type "V" is only available in model "S" potentiometer and with printed circuit terminals.
- (2) Bushings: Type "10" has two parallel flat surfaces for avoiding rotation. Bushless option only available for single model.
- (3) M07 shaft is only available with M10 bushing. --- = no shaft
- (4) Value:
  - Code: 10 1 100  $\Omega$
  - In models "D", "T", "C", with different values, they will be asked by drawings.
- (5) Tolerance (non standard), upon request. Example: +7% Code: 07 05  
 -5% Code: 05 07
- (6) Shaft special length:
  - Only for special length and plain shafts (not knurled). Example: Shaft  $\varnothing 6.35$  L= 24.5
  - NOTE: Maximum length recommended: L = 45
- (7) Mounting brackets: Only applicable for model "S", mounting "H" and without switch.
- (8) Stereo matching: not available for single models. Maximum will be: • 3dB for model "D" • 4dB for model "T" • 6dB for model "C"
- (9) Not available for Bushless version.
- (10) Switch option not available with antilog taper.

NOTE: The information contained here should be used for reference purposes only.





## SWITCH SPECIFICATIONS

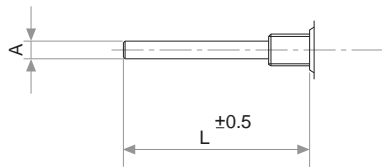
|                              |                               |
|------------------------------|-------------------------------|
| NOMINAL CURRENT              | 1A, 250 VAC                   |
| CONTACT RESISTANCE (initial) | 10 m $\Omega$                 |
| OPERATING TORQUE             | 1 to 3 Ncm (1.4 to 4.2 in oz) |
| OPERATING ANGLE              | 30° $\pm$ 5°                  |
| TEST VOLTAGE                 | 500 V                         |

## PACKAGING

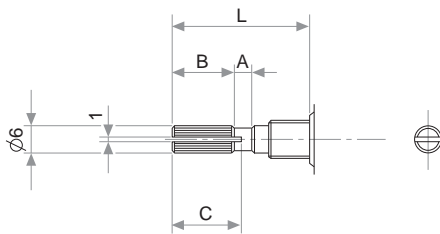
Boxes of 50 pieces (160 x 110 x 85 mm.)

## METALIC SHAFTS

### STANDARD

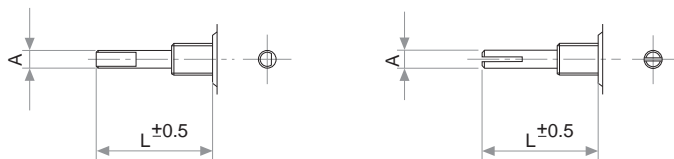


| A    | L  | CODE |
|------|----|------|
| 4    | 45 | M04  |
| 6    | 45 | M06  |
| 6.35 | 45 | M07  |



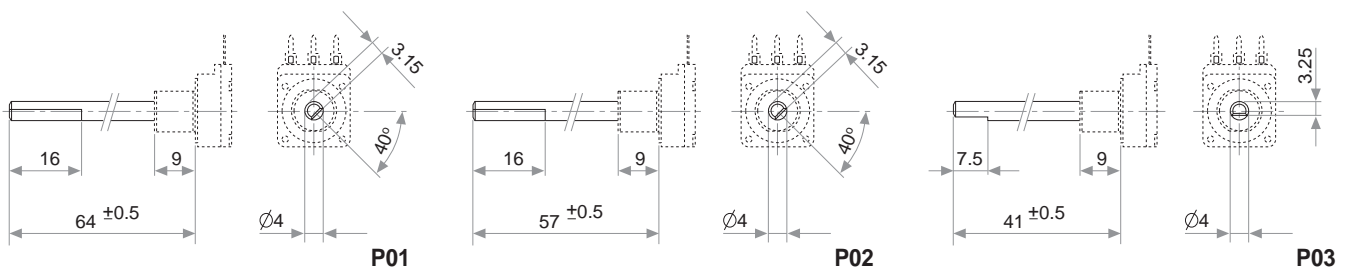
| A | B  | C  | L  | CODE |
|---|----|----|----|------|
| 2 | 5  | 7  | 15 | M11  |
| 2 | 10 | 11 | 20 | M12  |
| 4 | 12 | 14 | 25 | M13  |
| 4 | 12 | 14 | 30 | M14  |
| 4 | 12 | 14 | 35 | M15  |
| 4 | 12 | 14 | 40 | M16  |
| 4 | 12 | 14 | 45 | M17  |

### SPECIAL

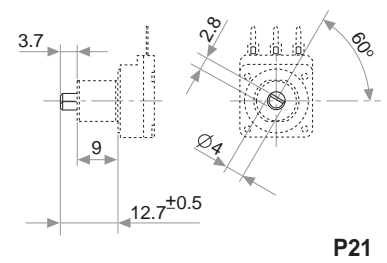
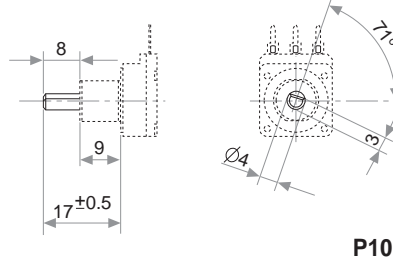
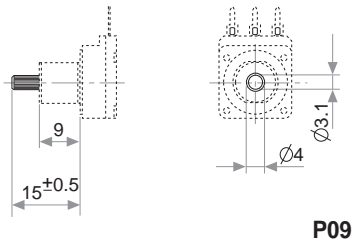
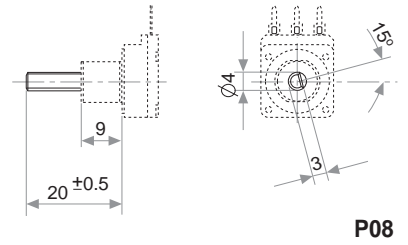
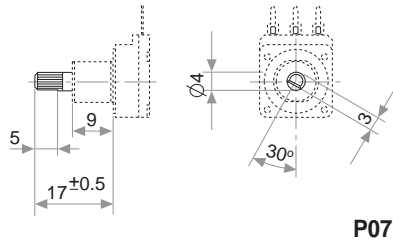
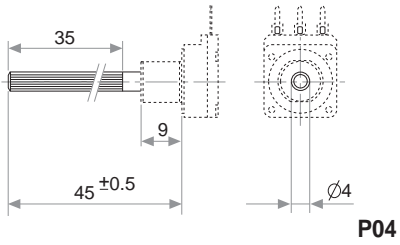


| A    |
|------|
| 4    |
| 6    |
| 6.35 |

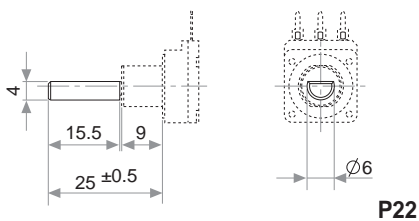
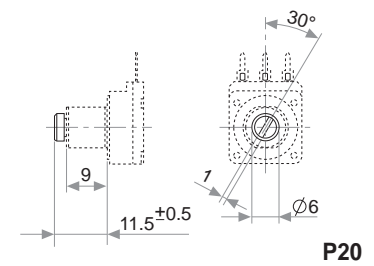
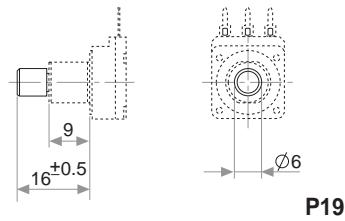
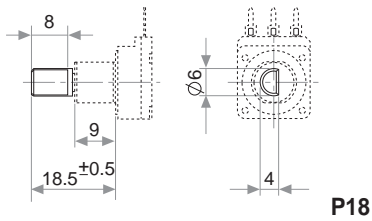
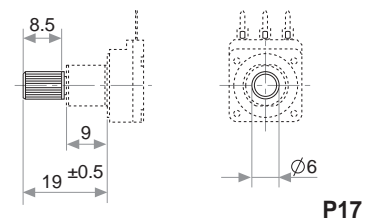
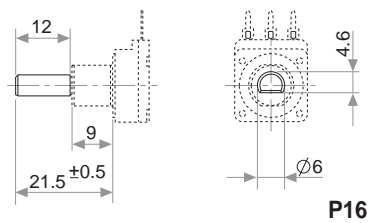
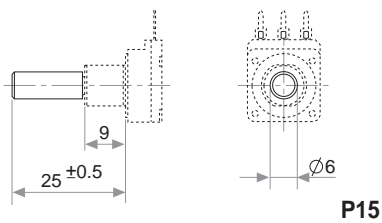
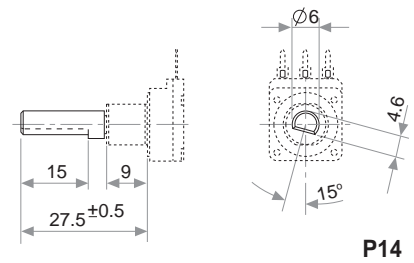
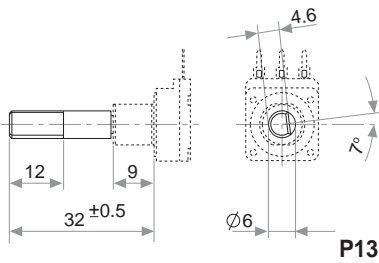
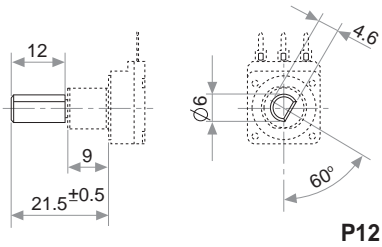
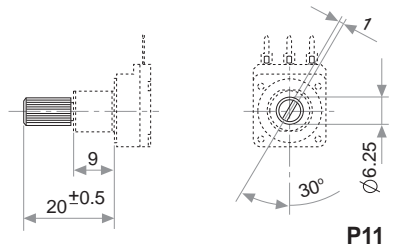
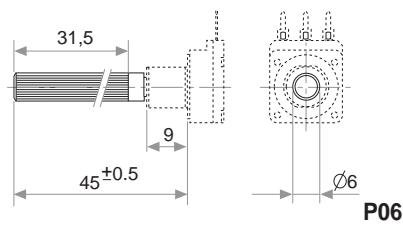
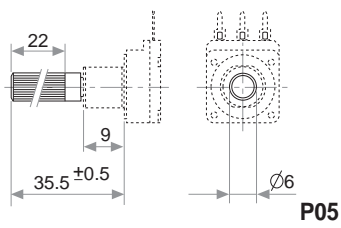
## PLASTIC SHAFTS Ø4



## PLASTIC SHAFTS Ø 4



## PLASTIC SHAFTS Ø 6



NOTE: Shaft position shown full CCW. Any other position for plastic shafts has to be shifted n times 24°  
Other positions upon request.

## X-ON Electronics

Largest Supplier of Electrical and Electronic Components

*Click to view similar products for [Potentiometers](#) category:*

*Click to view products by [Amphenol](#) manufacturer:*

Other Similar products are found below :

[58C2-2](#) [590SX1N32F103SS](#) [591SXJ48S252SC](#) [591SXP56S252SC](#) [591SXP56S503SC](#) [D31409](#) [70B1G048K502X-A](#) [70B1M032S502W](#)  
[70B1N056S202W](#) [70B8N056F502W](#) [70J8N048S104U](#) [70L1N040P103W](#) [70L1N048P103X](#) [70L1N048S103W](#) [GA2L040S102UC](#)  
[GA2L040S103UC](#) [GS1G044P103UA](#) [GS1N048P103UA](#) [GS1T032S103UA](#) [A43-1500](#) [A43-20K](#) [A47-200K](#) [A4720K](#) [RA20LASD251A](#)  
[132-2-0-202](#) [132-0-0-202](#) [RK14K1220-F25-C0-A103](#) [RK14K1220F25C0C104](#) [RK14K1220-F25-C1-B103](#) [14910FAGJSX10102KA](#)  
[14910FBGLFY00103KA](#) [14910AABHSX10103KA](#) [14910FAGJSX10104KA](#) [152-01031](#) [C0342008 5K](#) [P270-109A](#) [J97589](#) [23M728](#)  
[248BBHS0XB25104MA](#) [RV170F-10-15R1-B500K-0021](#) [RV8NAYSB104A](#) [917523A](#) [A43-40](#) [A43-750](#) [A43S-5](#) [A47-15K](#) [A4750K](#)  
[SPPG048S103U](#) [SPPG056P103U](#) [SWE-10](#)