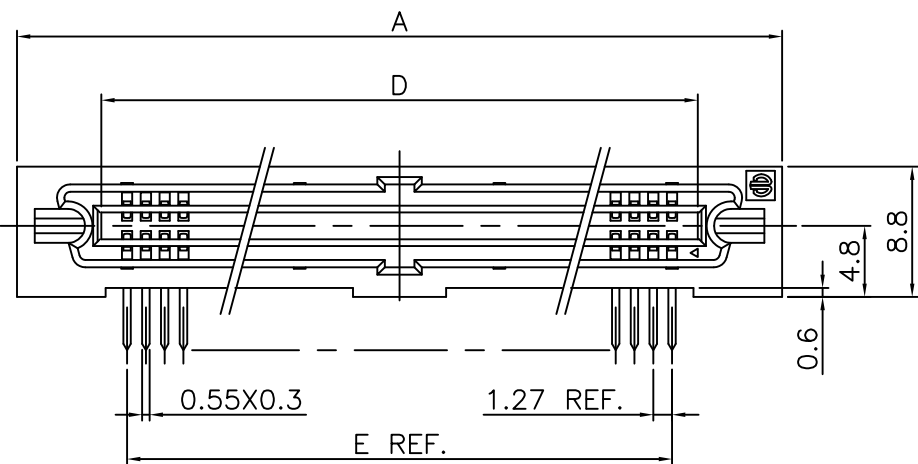
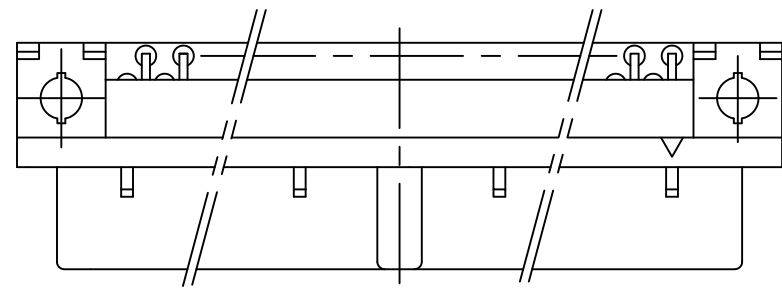
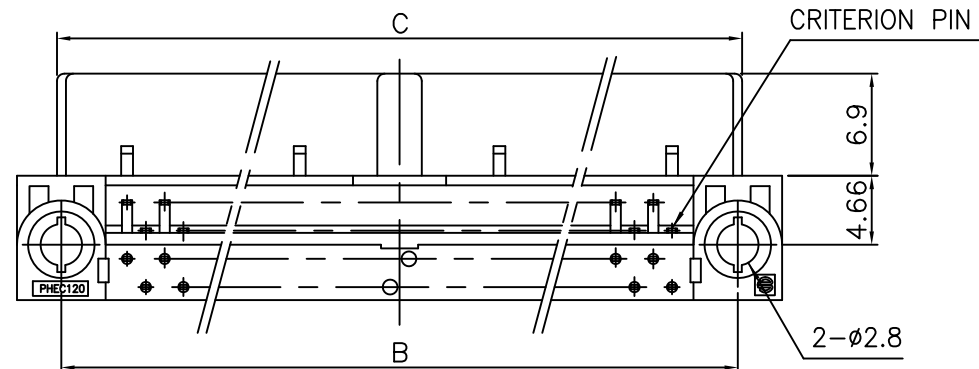


PRODUCT NO.

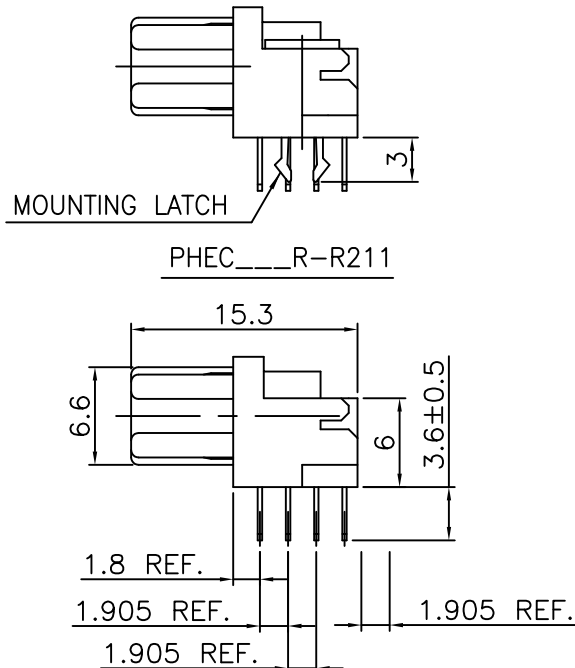
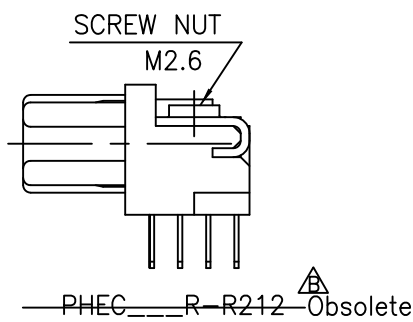
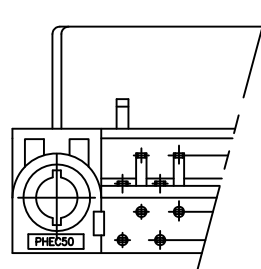
JSC 97409



NO. OF CONTACTS:40,60,68,80,100,120



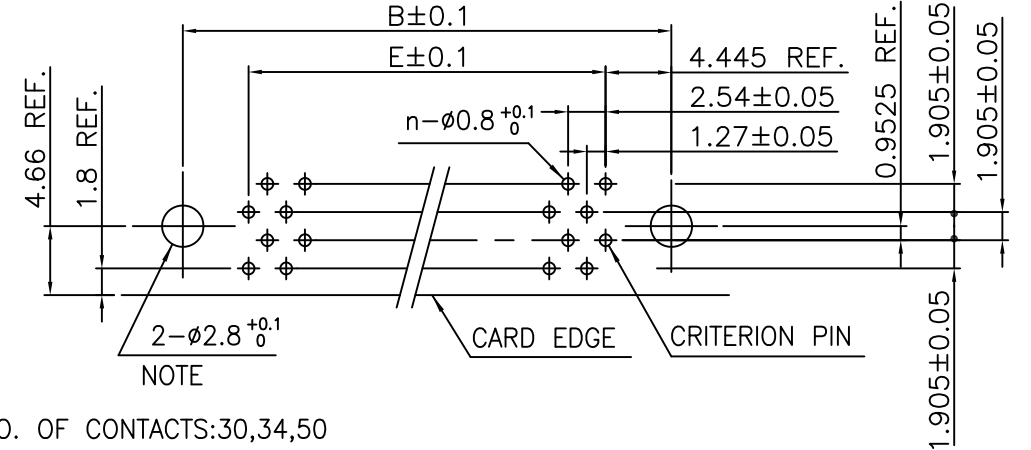
NO. OF CONTACTS:30,34,50



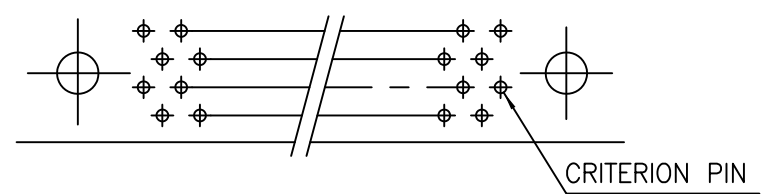
PHEC_R-R210

RECOMMENDED PC BOARD
THICKNESS:1.6±0.2
HOLE PATTERN (COMPONENT SIDE)

NO. OF CONTACTS:40,60,68,80,100,120 (n:NO. OF CONTACTS)



NO. OF CONTACTS:30,34,50



NOTE : THROUGH-HOLES FOR MOUNTING LATCHES ALSO SHOULD BE PLATED.

CAT. NO.	NO. OF CONTACTS (MATING SIDE)	DIMENSIONS				
		A	B	C	D	E
PHEC30R-R21_LF	15/ROW X 2 ROWS	32.67	26.67	27.26	21.26	17.78
PHEC34R-R21_LF	17/ROW X 2 ROWS	35.21	29.21	29.80	23.80	20.32
PHEC40R-R21_LF	20/ROW X 2 ROWS	39.02	33.02	33.61	27.61	24.13
PHEC50R-R21_LF	25/ROW X 2 ROWS	45.37	39.37	39.96	33.96	30.48
PHEC60R-R21_LF	30/ROW X 2 ROWS	51.72	45.72	46.31	40.31	36.83
PHEC68R-R21_LF	34/ROW X 2 ROWS	56.80	50.80	51.39	45.39	41.91
PHEC80R-R21_LF	40/ROW X 2 ROWS	64.42	58.42	59.01	53.01	49.53
PHEC100R-R21_LF	50/ROW X 2 ROWS	77.12	71.12	71.71	65.71	62.23
PHEC120R-R21_LF	60/ROW X 2 ROWS	89.82	83.82	84.41	78.41	74.93

NOTES

- BODY, LOCATOR MATERIAL : PBT GLASS FILLED (UL94V-0), COLOR BLACK
- TERMINAL MATERIAL : PHOSPHOR BRONZE
- MOUNTING LATCH MATERIAL : PHOSPHOR BRONZE
- SCREW NUT : STEEL
- TERMINAL FINISH
CONTACT AREA : GOLD 0.25μm min. OVER NICKEL UNDERLAYER
SOLDER TAILS : PURE Sn 2μm min. OVER NICKEL UNDERLAYER
- MOUNTING LATCH FINISH : PURE Sn 2μm min. OVER NICKEL UNDERLAYER
- SCREW NUT FINISH : NICKEL
- THIS PRODUCT MEETS EUROPEAN UNION DIRECTIVES AND OTHER COUNTRY REGULATIONS AS DESCRIBED IN GS-22-008
- THE HOUSING WILL WITHSTAND EXPOSURE TO 260 DEGREE PEAK TEMPERATURE FOR 10 SECONDS IN A WAVE SOLDER APPLICATION WITH A 1.6mm MINIMUM THICK CIRCUIT BOARD.

mat'l. code ---				surface ISO 1302 ✓	tolerance ISO 406 ISO 1101	projection	product family PHEC	CODE JP
ltr	description	ecn no	dr	date	tolerances unless otherwise specified	MM	title PRINTED CIRCUIT CONNECTOR (CAT.NO.PHEC _ _ _ R-R21_LF)	
A	RELEASED	J08-0178	S.W	2008-4-18	angles linear	0.X ±0.3	dwg no JSC 97409 sheet 1 of 1 size A3	
B	EOL of R212LF	ELX-J-17067	S.W	2014-2-27	0'±2'	0.XX ±0.3	type Customer Drawing	
					dr S.Watanabe 2014-2-27	0.XXX ±0.3	Rev. B	
					enr S.Watanabe 2014-2-27			
					chr K.Ito 2014-2-27			
					appd Y.Kameda 2014-2-27			
sheet index	revision sheet	B 1						



Copyright FCI.

X-ON Electronics

Largest Supplier of Electrical and Electronic Components

Click to view similar products for [Headers & Wire Housings](#) category:

Click to view products by [Amphenol](#) manufacturer:

Other Similar products are found below :

[892-18-020-10-001101](#) [58102-G61-06LF](#) [582553-1](#) [0009485154](#) [009176003701906](#) [0050291907](#) [LY20-4P-DT1-P1E-BR](#) [02.125.8002.8](#)
[609-3404](#) [61062-3](#) [622-0430](#) [622-3653LF](#) [63453-116](#) [636-1030](#) [636-1427](#) [636-3427](#) [636-4007](#) [641938-9](#) [641991-4](#) [644827-2](#) [65817-010LF](#)
[65817-015LF](#) [65863-015LF](#) [66207-023LF](#) [67095-007LF](#) [67601157](#) [68648-049](#) [70.362.1628.0](#) [70-4210](#) [70-4226B](#) [70-4853B](#) [707-5020](#) [707-](#)
[5028](#) [71.350.2428.0](#) [71918-208LF](#) [71961-016LF](#) [733-134](#) [733-162](#) [754199-000](#) [760-3052](#) [787-8014-00](#) [79531-3000](#) [FCN-360C032-B](#) [FCN-](#)
[367T-T012/H](#) [FCN-723D010/2](#) [80.063.4001.1](#) [800-90-001-10-001000](#) [800-90-010-10-002000](#) [801-43-002-10-013000](#) [801-43-006-10-002000](#)