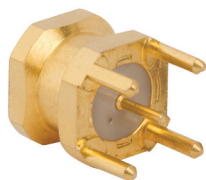


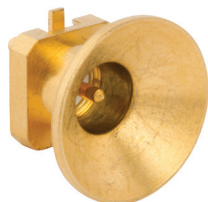
PSMP-MSLD-PCSEM



PSMP-FSBA-1755



PSMP-MSLD-PCT35



PSMP-MSSB-PCS

Overview

Amphenol RF PSMP connectors are the perfect solution for board-to-board applications requiring high power. With a minimum board spacing of 12.6 mm, the three-piece design allows maximum flexibility for high-density board spacing, and is an ideal solution for blindmate situations.

PSMP connectors are the best combination of SMP performance and SMA power capability, in a compact package size. The PSMP has the exact same PCB footprint as the SMP, allowing for easy conversion of applications for higher power handling.

Features and Benefits

- High Frequency operation up to 10 GHz
- 200 W @ 2.2GHz continuous power
- 12.6 mm minimum board spacing
- Axial misalignment: +/- 1 mm
- Snap-on coupling (Limited Detent Parts)

Applications

- Base Stations
- Radios
- Filters
- Amplifiers
- Handheld Radio

Amphenol RF

Four Old Newtown Road
Danbury, CT 06810

For more information visit www.amphenorlf.com
or call 800.627.7100

Ordering Information

PSMP Limited Detent Connectors

PSMP-MSLD-PCT25	PSMP PCB Jack, Male Contact, Through-Hole 2.5mm Legs, Limited Detent, 50 Ohm
PSMP-MSLD-PCT35	PSMP PCB Jack, Male Contact, Through-Hole 3.5mm Legs, Limited Detent, 50 Ohm
PSMP-MSLD-PCT1R	PSMP PCB Jack, Male SMT R/A Contact, Through-Hole 1.0mm Legs, Limited Detent, 50 Ohm
PSMP-MSLD-PCTEM	PSMP PCB Jack, Male Contact, Through-Hole 2.5mm Legs, Limited Detent, EMI Ring, 50 Ohm
PSMP-MSLD-PCSEM	PSMP PCB Jack, Male Contact, Surface Mount, Limited Detent, EMI Ring, 50 Ohm
PSMP-MSLD-PCS	PSMP PCB Jack, Male Contact, Surface Mount, Limited Detent, 50 Ohm
PSMP-MSLD-PCE	PSMP PCB Jack, Male Contact, Edge Mount, Limited Detent, 50 Ohm
PSMP-MSLD-CSB	PSMP PCB Jack, Male Contact, Bulkhead Mount, Post Termination, Limited Detent, 50 Ohm

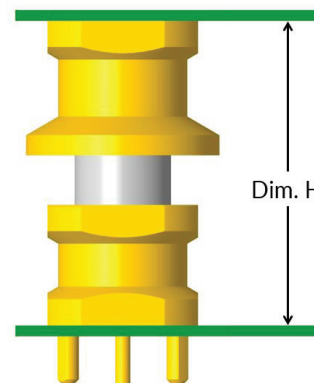
PSMP Smooth Bore Connectors

PSMP-MSSB-PCT1R	PSMP PCB Jack, Male SMT R/A Contact, Through-Hole 1.0mm Legs, Smooth Bore, 50 Ohm
PSMP-MSSB-PCT35	PSMP PCB Jack, Male Contact, Through-Hole 3.5mm Legs, Smooth Bore, 50 Ohm
PSMP-MSSB-PCS	PSMP PCB Jack, Male Contact, Surface Mount, Smooth Bore, 50 Ohm
PSMP-MSSB-CSB	PSMP PCB Jack, Male Contact, Bulkhead Mount, Post Termination, Smooth Bore, 50 Ohm

PSMP Bullet Adapters

Plug to Plug, Female Contact

PSMP-FSBA-1000	10.00 mm
PSMP-FSBA-1042	10.42 mm
PSMP-FSBA-1175	11.75 mm
PSMP-FSBA-1755	17.55 mm
PSMP-FSBA-1970	19.70 mm
PSMP-FSBA-2380	23.80 mm
PSMP-FSBA-2580	25.80 mm



Dim. H = Bullet Length + 2.6 mm

Amphenol® RF

Technical Specifications

Electrical data	
Impedance	50 Ω
Frequency range	DC to 10 GHz
Return loss (cable connector straight)	≥ 32 dB @ DC to 3 GHz ≥ 26 dB @ 3 GHz to 6 GHz
Insertion loss	≤ 0.03 x SQRT[f (GHz)] dB
Insulation resistance	≥ 5 GΩ
Center contact resistance	≤ 3 mΩ
Outer contact resistance	≤ 2 mΩ
Test voltage	1000 V rms
Working voltage	480 V rms
Power handling	200 W @ 2.2 GHz
Contact current	≤ 15 A DC
RF leakage - Interface	≥ 75 dB @ DC to 4 GHz
Intermodulation 3rd order	≤ -160 dBc (2 x 43 dBm)

Mechanical data	
Mating cycles	Full detent: ≥ 100 Limited detent: ≥ 100 Smooth bore, Catchers mitt: ≥ 1000
Center contact captivation	Axial: ≥ 7 N
Engagement force	Full detent: ≤ 68 N Limited detent: ≤ 45 N Smooth bore, Catchers mitt: ≤ 10 N
Disengagement force	Full detent: ≥ 25 N Limited detent: ≥ 15 N Smooth bore, Catchers mitt: ≥ 2.2 N
Axial misalignment	± 1 mm
Radial misalignment	4°
Board-to-board distance (min.)	12.6 mm (solder paste thickness not included)

Environmental data	
Temperature range	-65 °C to +165 °C
Thermal shock	IEC 60169-1, Sub-clause 16.4 (-65 °C to +165 °C)
Climatic category	IEC 60169-1, Sub-clause 18 (+165 °C, 1000 hours)
Vibration	IEC 60068-2-64 random
Shock	IEC 60068-2-27 (50g, 11 ms, half-sine)
Max. soldering temperature (PCB connectors)	IEC 61760-1, +260 °C for 10 sec.

Amphenol RF
Four Old Newtown Road
Danbury, CT 06810

For more information visit www.amphenolrf.com
or call 800.627.7100

X-ON Electronics

Largest Supplier of Electrical and Electronic Components

Click to view similar products for [RF Connectors / Coaxial Connectors](#) category:

Click to view products by [Amphenol](#) manufacturer:

Other Similar products are found below :

[8915-1511-000](#) [89674-0827](#) [6001-7071-019](#) [6002-7051-003](#) [6002-7551-202](#) [6059674-1](#) [619550-1](#) [630059-000](#) [M39030/3-01N](#) [M3933/25-36N](#) [6500-7071-046](#) [6769](#) [CX050L2AQ](#) [7002-1542-011](#) [7004-1512-000](#) [7009-1511-004](#) [7010-1511-000](#) [7029-1511-060](#) [7101-1541-010](#) [7101-1571-002](#) [7105-1521-002](#) [7145-1521-002](#) [7203-1571-003](#) [7209-1511-011](#) [7210-1511-015](#) [7210-1511-019](#) [73137-5015](#) [73216-2241](#) [7325-1512-000](#) [73404-2300](#) [7405-1521-005](#) [7405-1521-802](#) [7406-1521-005](#) [8527](#) [8547](#) [FS11V](#) [8808-1511-001](#) [9049-9513-000](#) [9074-9513-000](#) [9101-9573-002](#) [910A205F](#) [9130-9573-002](#) [PL11SC-026](#) [PL375-33](#) [PL40-5](#) [PL71-9](#) [PL74C-221](#) [PL75MC-217](#) [PL803-7](#) [980-8666-005](#)