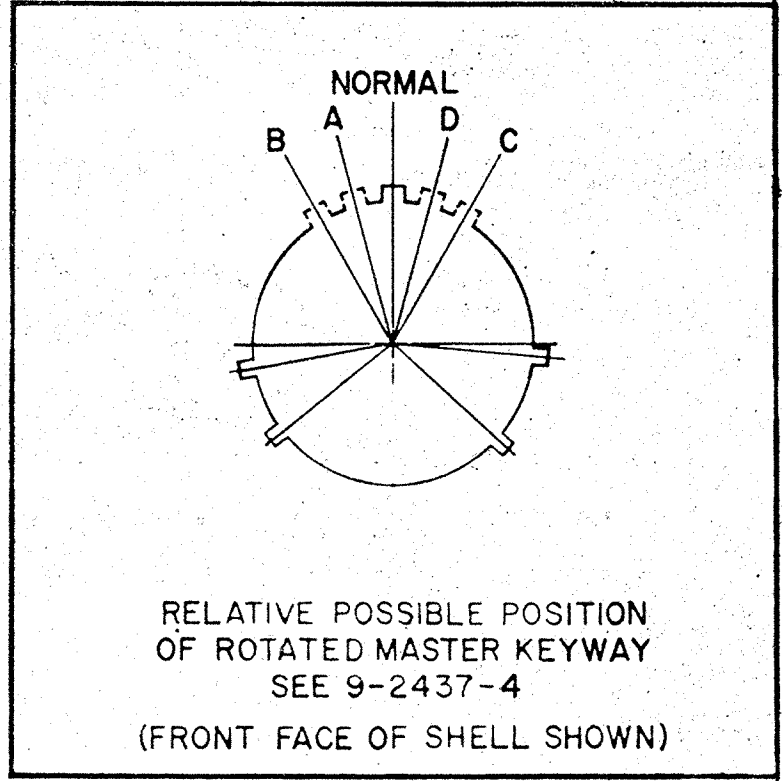
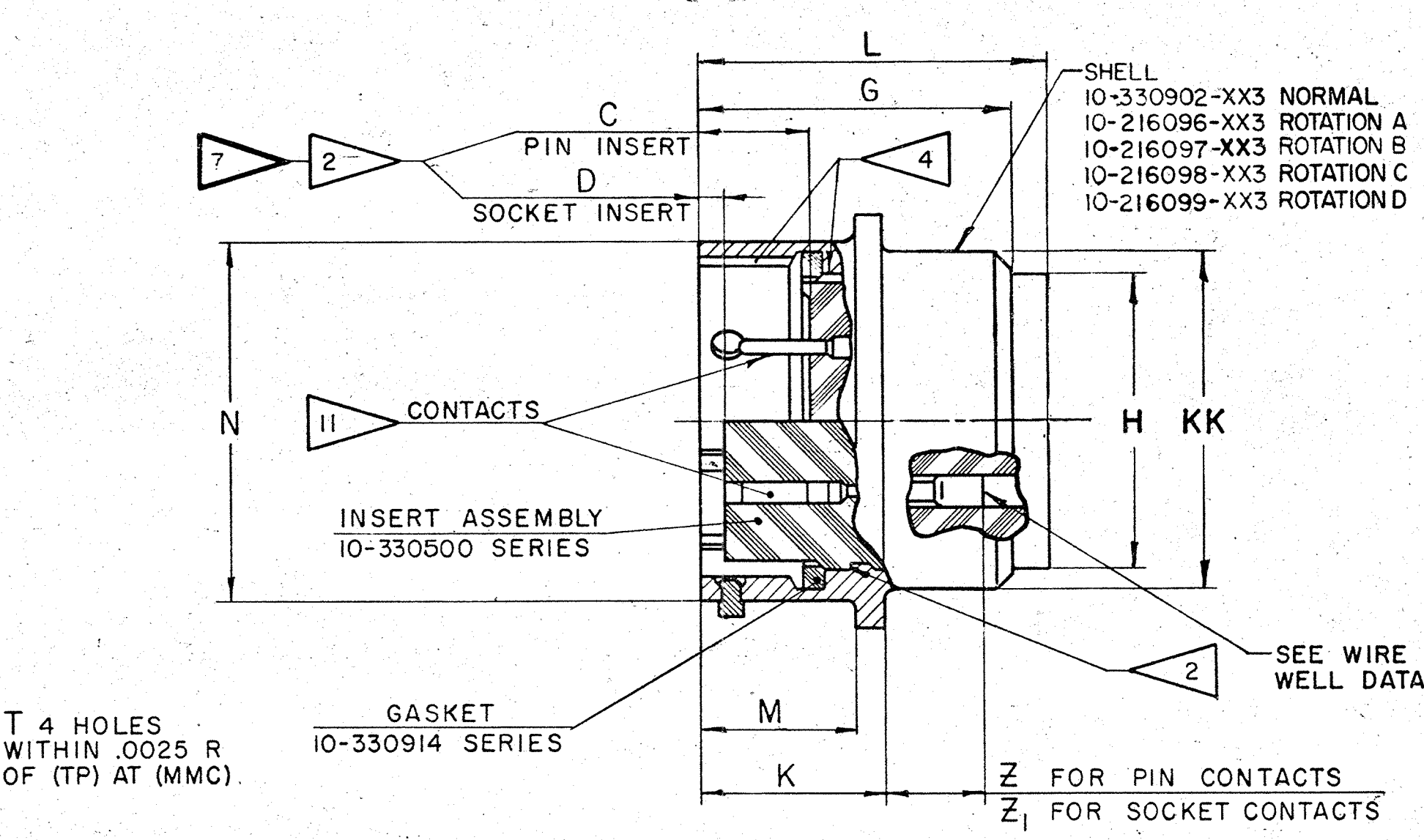
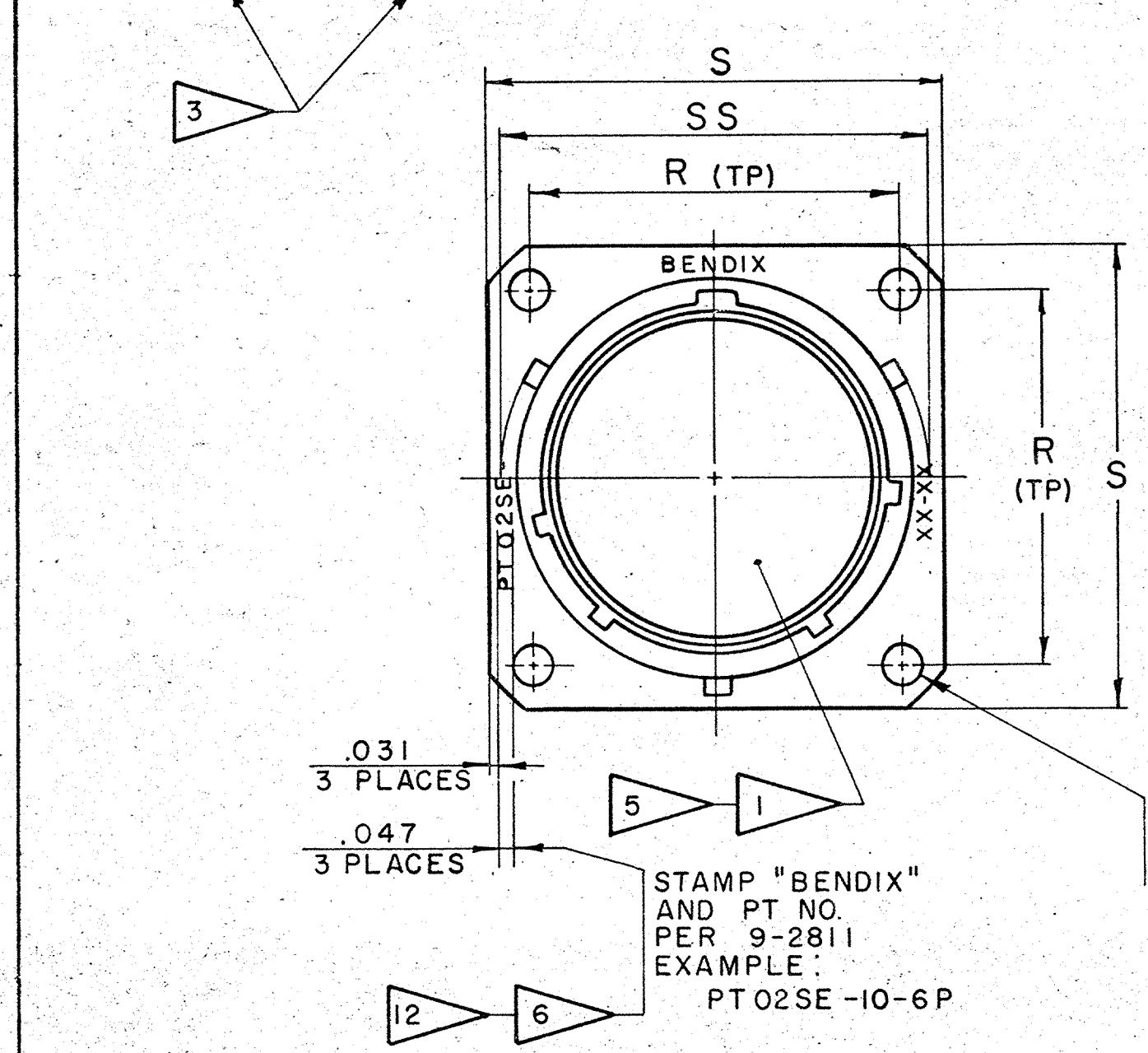


ASSEMBLY NUMBER	PT-SE NUMBER	DIMENSIONS														
		C +.000 -.020	D +.000 -.020	G +.025 -.020	H DIA MAX	K +.025 -.010	L MAX	M +.010 -.000	N DIA +.001 -.005	R (TP)	S ±.016	T DIA ±.005	Z ±.055	Z ₁ ±.055	KK DIA +.011 -.000	SS DIA +.000 -.016
71-331206-	02SE-6-	NOT AVAILABLE														
71-331208-	-8-	.332	.025	.743	.297	.493	1.328	.431	.473	.594	.812	.120	.509	.448	.438	.563
71-331210-	-10-				.421		1.266		.590	.719	.938				.562	.680
71-331212-	-12-				.546				.750	.812	1.031				.688	.859
71-331214-	-14-				.663				.875	.906	1.125				.812	.984
71-331216-	-16-				.788				1.000	.969	1.219				.938	1.108
71-331218-	-18-				.879				1.125	1.062	1.312				1.062	1.233
71-331220-	-20-	.394	.087	.994	1.014	.650	1.328	.556	1.250	1.156	1.438		.414	.353	1.188	1.358
71-331222-	-22-			.994	1.135	.650		.556	1.375	1.250	1.562		.414	.353	1.312	1.483
71-331224-	-24-			1.058	1.259	.683		.589	1.500	1.375	1.688	.147	.381	.320	1.438	1.612
71-331225/50		NOT AVAILABLE														

REL NO. 36502-358		REVISIONS			COMM REC
CHG NO.	SYM	DESCRIPTION	DATE	APPROVAL	
		FOR CHANGES 1 THRU A5, SEE RECORD DRAWING			
59847	B	(MFG) ADDED NOTE 15	8-9-78 L. HALL	<i>[Signature]</i>	



- NOTES:
- FOR CONTACT ARRANGEMENTS & COAXIAL CONTACT DATA, SEE DRAWINGS L-15206-() THRU L-15250-().
 - DIMENSIONS MUST BE MAINTAINED WHEN INSERTS ARE PRESSED FIRMLY AGAINST INDICATED SHOULDER.
 - TO COMPLETE ASSEMBLY NO. & PT-SE NO., ADD APPLICABLE INSERT ARRANGEMENT SUFFIX TO BASE NUMBERS LISTED ABOVE PER 9-2437-1 OR 9-2437-4.
 - VERTICAL CENTERLINES OF INSERT ARRANGEMENT & THE MAIN SHELL POLARIZING KEYWAY TO BE WITHIN .005 OF INDICATED ROTATION PER 9-2437-1.
 - INSERT ASSEMBLIES ARE NOT REMOVABLE.
 - SEE WORK ORDER FOR PERMISSIBLE ADDITIONAL OR ALTERNATE STAMPING.
 - INSERT LOCATING DIMENSIONS APPLY BEFORE ASSEMBLY OF CONTACTS.
 - FOR COMPONENT PART NUMBERS OF DESIRED ARRANGEMENT, SEE APPLICABLE PARTS LIST (PL).
 - SEE DRAWING 71-331606/50 & OTHERS FOR REQUIRED MATING PLUG ASSEMBLY.
 - STAMPING MAY BE ON EITHER SIDE OF FLANGE (ONE SIDE ONLY).
 - PLACE CONTACTS IN AN APPLICABLE POLYETHYLENE BAG 10-215999 SERIES (SEE PARTS LIST) & INCLUDE IN A POLYETHYLENE BAG CONTAINING CONNECTOR.
 - UNITS ILLUSTRATED MEET THE MATERIAL & FINISH REQUIREMENTS OF MIL-C-26482.
 - FOR FINAL INSTALLATION, CONTACTS MUST BE ASSEMBLED INTO ALL INSERT HOLES.
 - SEE INDIVIDUAL DRAWINGS FOR 71-331214-22, 71-331214-91, 71-331218-91 & 71-331222-96.

WIRE WELL DATA			
CONTACT SIZE	20	16	
CONDUCTOR WELL DIA	.048 +.002 -.000	.066 +.002 -.000	
CONDUCTOR WELL DEPTH	.184 +.037 -.000	.234 +.031 -.000	
INSULATION WELL DIA	.091 +.002 -.000	NOT AVAILABLE	COAXIAL DATA
INSULATION WELL DEPTH	.077 +.006 -.000	NOT AVAILABLE	SEE NOTE 1

ACCESSORIES				
(NOT PART OF STANDARD ASSEMBLY)				
SEE DRAWING			10-150000	

TEST 9-4039-1
ASSY 9-3836, 9-2437-19-2437-4
9-2811

ITEM	REQD	PART NO	DESCRIPTION	UNIT WT	NEXT ASSY	USED ON
LIST OF MATERIAL						
CONNECTION, ELECTRICAL RECEPTACLE, TYPE PT-SE()FB, OLIVE DRAB						

UNLESS OTHERWISE SPECIFIED:
1. TOLERANCES UNLESS OTHERWISE SPECIFIED:
2. ALL DIMENSIONS UNLESS OTHERWISE SPECIFIED APPLY AT MAXIMUM MATERIAL CONDITION (MMC).
3. RADIUS FILLETS AT BREAK EDGES UNLESS OTHERWISE SPECIFIED.
4. DIMENSIONS IN PARENTESIS ARE FOR INFORMATION ONLY.
FOR DIMENSIONS INTERPRETATION SEE SPEC 9-2811

ABBREVIATIONS & SYMBOLS
MAY BE USED IN THIS DRAWING
ORIG ENG JOB NO 996
DRAWN E. FLEMING DATE 12-19-60
CHECKED Mero DATE 12-19-60
MATERIAL
FINISH SPEC
HEAT TREAT SPEC

SCALE: NONE WT CALC (SEE ACT. PL) LBS 71-196/05/50
DRAWING C TAB
CODE 77820

71-331206 THRU 71-331250

X-ON Electronics

Largest Supplier of Electrical and Electronic Components

Click to view similar products for [Circular MIL Spec Connector](#) category:

Click to view products by [Amphenol](#) manufacturer:

Other Similar products are found below :

[0025-262-542](#) [0025-264-3014](#) [58-570121-04S](#) [0134-202-1200](#) [0134-207-1206](#) [0134-207-1800](#) [0134-207-2207](#) [0134-213-0806](#) [0134-213-1007](#) [0134-213-1009](#) [0134-213-1208](#) [0134-213-1800](#) [0134-213-2209](#) [0025-258-000](#) [015-9516-002](#) [60-042722-19P](#) [0114-201-1278](#) [602GB06EG24-61SN](#) [0134-201-1207](#) [0134-201-1806](#) [0134-201-2006](#) [0134-201-2007](#) [0134-201-2010](#) [0134-202-1400](#) [0134-207-0809](#) [0134-207-1208](#) [0134-207-2009](#) [0134-213-1006](#) [6104-207-2302](#) [6104-208-1902](#) [6131-202-19149P](#) [6131-204-21149P](#) [6131-207-13149P](#) [6131-208-13149P](#) [6131-209-17149P](#) [6131-210-11149P](#) [6131-211-19149P](#) [6131-216-19149P](#) [6131-220-25149P](#) [6131-259-11149P](#) [6131-259-21149P](#) [6131-259-23149P](#) [6131-263-19149P](#) [6131-265-17149P](#) [6131-265-19149P](#) [CS3102A-20-15P](#) [CS3102A-20-15S](#) [CS3102C18-4P-472](#) [CS3106A-20-29P](#) [CS3106A-20-74P](#)