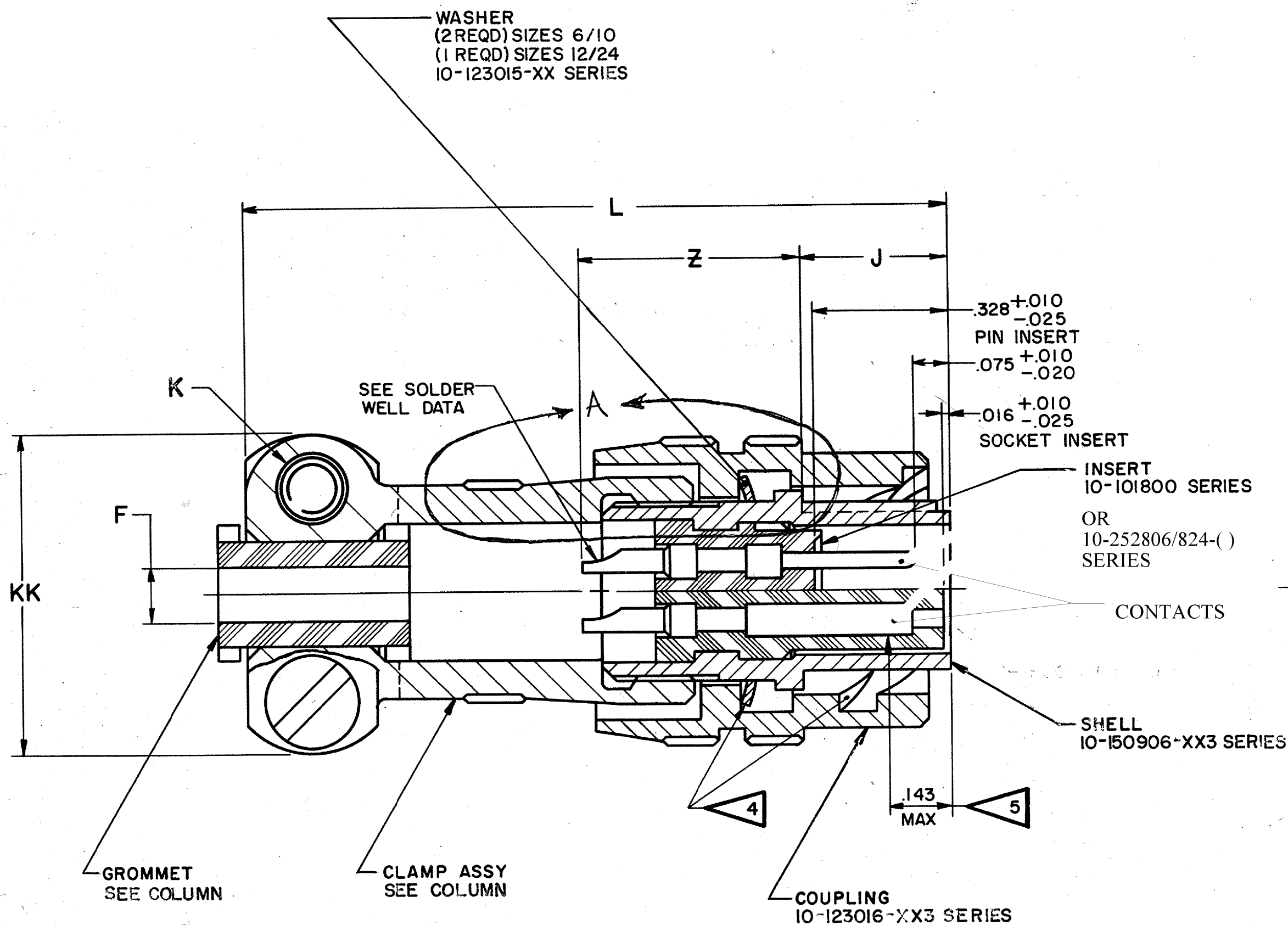
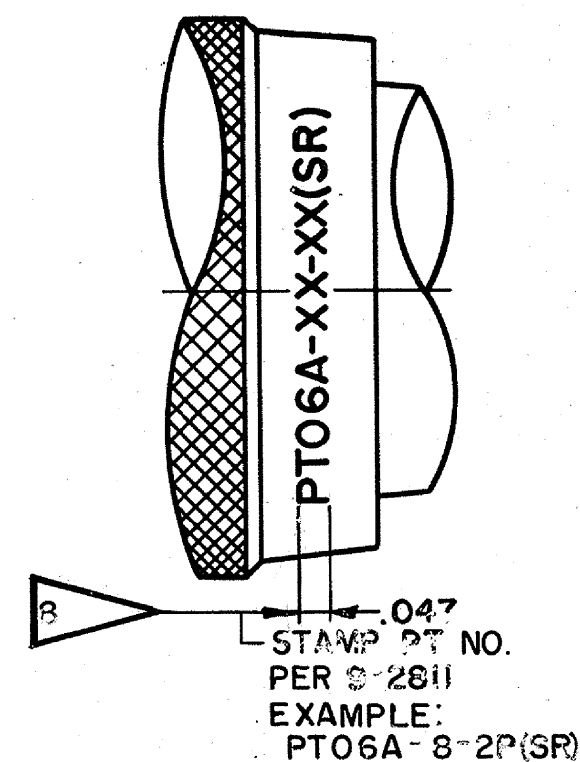
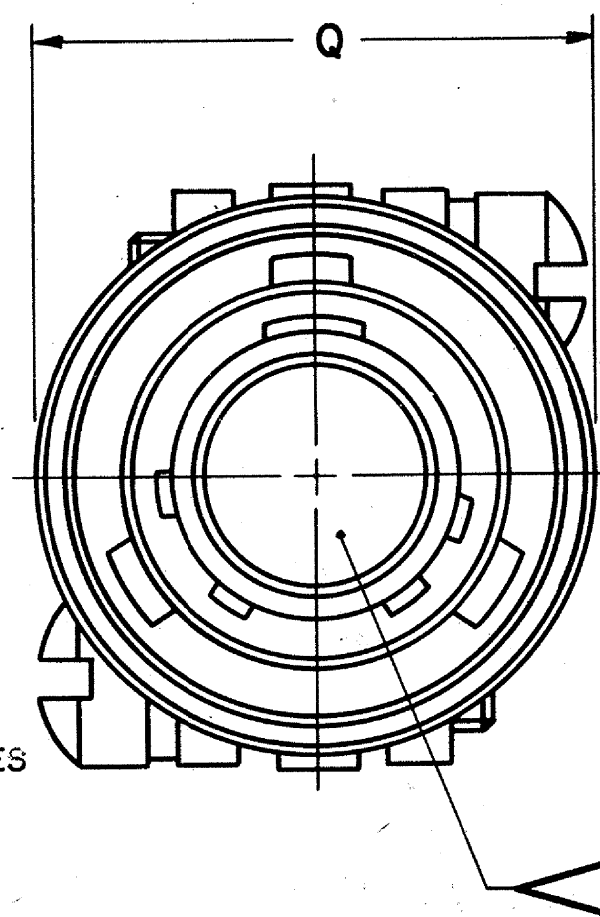


VIEW A
ALTERNATE DESIGN OF ACCESSORY
AND COUPLING



REL NO. 33608-96		REVISIONS		
CHG NO.	SYM	DESCRIPTION	DATE	APPROVED
43525-799	A2	REDRAWN SAME SIZE; PROVIDED ENVELOPE DRAWING	11-11-64 W. GAY	Haman
45525-1134	A3	STANDARDIZED	8-11-66 D. BROWN	Haman
26181	B	(CL II) REV COL. L	5/29/92 M. Felt	CM
27790	C	(CL II) ADDED VIEW A	5-21-93 JED	JED
99039	D	(CL II) ADDED 10-252806/824-() ECN: 99039	12-8-06 JONES	



ACCESSORIES
(NOT PART OF STANDARD ASSEMBLY)

SEE DRAWING
10-150000

USE OF THIS DOCUMENT IS UNLIMITED. DOCUMENTS
REFERENCED HEREON CONTAIN LIMITED RIGHTS DATA.

ITEM NO.	QTY REQD	DESCRIPTION	PART NUMBER	CODE IDENT	ZONE	NEXT ASSEMBLY
PARTS LIST						
UNLESS OTHERWISE SPECIFIED		DRAWN: F. GEORGE		DATE: 11-19-57		
LINEAR DIMENSIONS ARE IN INCHES.		CHECKED: S. LAWSON		DATE: 7-14-65		
TOLERANCES: 3 PLACES ±.010;		MATERIAL:				
2 PLACES ±.03; 1 PLACE ±.1;		STANDARDS: J. Balantieri 4-14-65				
ANGLES ±2°. OTHER STANDARDS PER		DRAFTING: S. Lawson 4-14-65				
SCINTILLA SPEC 9-3800 AND MIL-STD 8.		ENGINEERING: M. Hammon 4-14-65				
MATERIAL SPEC		DEVELOPMENT: R. Carr				
PROCESS SPEC SEE SHEET 2						
THE Bendix CORPORATION				SCINTILLA DIVISION SIDNEY, NEW YORK, U.S.A.		
TITLE: CONNECTOR, ELECTRICAL PLUG, TYPE PT-A()MC(SR), OLIVE DRAB						
CODE IDENT NO. 77820		SIZE C		71-150750 THRU 71-150774		
SCALE NONE		WT		REF 71-146606 / 50		SHEET 1 OF 2

SEE SHEET 2
NOTES: REF SYMBOL

REL NO. 33508-95		REVISIONS	
CHG NO.	SYM	DESCRIPTION	DATE
		SEE SHEET I FOR ALL CHANGES	

ASSEMBLY NUMBER	PT NO.	F DIA	J	L MAX	Q DIA +0.000 -0.047	K THD CLASS 2 REF	Z ±.035	KK +0.000 -0.047	GROMMET	CLAMP ASSY
71-150750 -	06A-6- (SR)									
71-150751 -	-8-	.125	.353	1.828	.734	6-32UNC	.525	.781	10-36565 -101	10-101987 - 83
71-150752 -	-10-	.188			.844			.844	-122	-103
71-150753 -	-12-	.312			1.016			.969	-143	-123
71-150754 -	-14-	.375		↓	1.141			1.094	-163	-143
71-150755 -	-16-	.500		1.969	1.266	↓		1.156	-183	-163
71-150756 -	-18-	.625	↓	1.969	1.375	8-32UNC	↓	1.406	-203	-183
71-150757 -	-20-	.625	.415	2.141	1.516		.619	1.406	-203	-203
71-150758 -	-22-	.750		2.141	1.641			1.594	-244	-223
71-150759 -	↓-24-	.800	↓	2.219	1.761	↓	↓	1.688	↓-232	↓-243
71-150760/74				NOT AVAILABLE						

- FOR ASSEMBLY NUMBERS 71-150754-91, 71-150756-80, 71-150756-90, 71-150756-91, 71-150758-4, 71-150758-7 SEE INDIVIDUAL DRAWING.
- FOR COMPONENT PART NUMBERS OF DESIRED ARRANGEMENT, SEE APPLICABLE PARTS LISTS.
- SEE WORK ORDER FOR PERMISSIBLE ADDITIONAL OR ALTERNATE STAMPING.
- FOR CONTACT ARRANGEMENTS, SEE DRAWINGS L-15206-() THRU L-15250-().
- UNITS ILLUSTRATED MEET THE MATERIAL & FINISH REQUIREMENTS OF MIL-C-26482.
- DISTANCE BETWEEN END OF SHELL & THE POINT AT WHICH A GAGE PIN, HAVING THE SAME BASIC DIAMETER AS THE MATING CONTACT & A SQUARE FACE, ENGAGES SOCKET CONTACT SPRING.
- COUPLING RAMPS & WASHER ARE LUBRICATED

- FOR COMPLETE ASSEMBLY NUMBER & PT NO., ADD APPLICABLE INSERT ARRANGEMENT SUFFIX TO BASE NUMBERS LISTED ABOVE PER 9-2437-1.
- FOR MATING RECEPTACLE ASSEMBLY, SEE DRAWING 71-150700/24 & OTHERS.
- INSERTS & CONTACTS MUST NOT BE REMOVED

NOTES: REF SYMBOL ◁

SOLDER WELL DATA			CONTACT DATA (WHERE APPLICABLE)	
			THERMOCOUPLE	
CONTACT SIZE	20	16	MATERIAL	IDENTIFICATION
WELL DIA	046 +0.004 -0.000	078 +0.004 -0.002	CHROMEL ALUMEL IRON CONSTANTAN	WHITE GREEN BLACK YELLOW
WELL DEPTH	.125 +0.031 -0.000	.188 +0.031 -0.000	INSERT ARRANGEMENTS CONTAINING THERMOCOUPLE CONTACTS MUST HAVE SUCH CONTACTS ASSEMBLED INTO THE INSERT IN PROPER LOCATIONS AS SPECIFIED BY APPLICABLE DRAWINGS L-15206-() THRU L-15250-().	

ITEM NO.	QTY REQD	DESCRIPTION	PART NUMBER	CODE IDENT	ZONE	NEXT ASSEMBLY
PARTS LIST						
UNLESS OTHERWISE SPECIFIED		DRAWN: F. GEORGE		DATE: 11-19-57		
LINEAR DIMENSIONS ARE IN INCHES. TOLERANCES: 3 PLACES ±.010; 2 PLACES ±.03; 1 PLACE ±.1; ANGLES ±2°. OTHER STANDARDS PER SCINTILLA SPEC 9-3800 AND MIL-STD 8.		CHECKED: S. Lawson		DATE: 4-14-65		
MATERIAL SPEC		STANDARDS: J. Balantei 4-14-65		TITLE: THE Bendix CORPORATION SCINTILLA DIVISION SIDNEY, NEW YORK, U.S.A.		
PROCESS SPEC TEST 9-3980-2 ASSY 9-3443-1 9-2437-1 9-2811		DRAFTING: S. Amund 4-14-65		CONNECTOR, ELECTRICAL PLUG, TYPE PT-A()MC(SR), OLIVE DRAB		
		ENGINEERING: J. M. J. 4-14-65		CODE IDENT NO. 77820		
		DEVELOPMENT: R. Carr		SIZE C 71-150750 THRU 71-150774		
SCALE NONE			WT		REF 71-146606/50 SHEET 2	

X-ON Electronics

Largest Supplier of Electrical and Electronic Components

Click to view similar products for [Circular MIL Spec Connector](#) category:

Click to view products by [Amphenol](#) manufacturer:

Other Similar products are found below :

[0025-262-542](#) [0025-264-3014](#) [58-570121-04S](#) [0134-202-1200](#) [0134-207-1206](#) [0134-207-1800](#) [0134-207-2207](#) [0134-213-0806](#) [0134-213-1007](#) [0134-213-1009](#) [0134-213-1208](#) [0134-213-1800](#) [0134-213-2209](#) [0025-258-000](#) [015-9516-002](#) [60-042722-19P](#) [0114-201-1278](#) [602GB06EG24-61SN](#) [0134-201-1207](#) [0134-201-1806](#) [0134-201-2006](#) [0134-201-2007](#) [0134-201-2010](#) [0134-202-1400](#) [0134-207-0809](#) [0134-207-1208](#) [0134-207-2009](#) [0134-213-1006](#) [6104-207-2302](#) [6104-208-1902](#) [6131-202-19149P](#) [6131-204-21149P](#) [6131-207-13149P](#) [6131-208-13149P](#) [6131-209-17149P](#) [6131-210-11149P](#) [6131-211-19149P](#) [6131-216-19149P](#) [6131-220-25149P](#) [6131-259-11149P](#) [6131-259-21149P](#) [6131-259-23149P](#) [6131-263-19149P](#) [6131-265-17149P](#) [6131-265-19149P](#) [CS3102A-20-15P](#) [CS3102A-20-15S](#) [CS3102C18-4P-472](#) [CS3106A-20-29P](#) [CS3106A-20-74P](#)