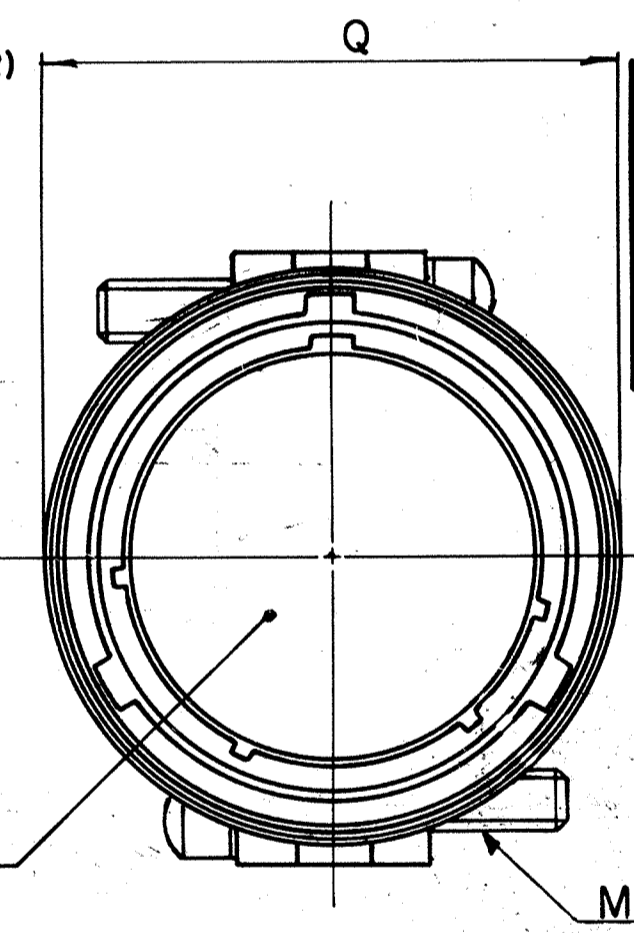
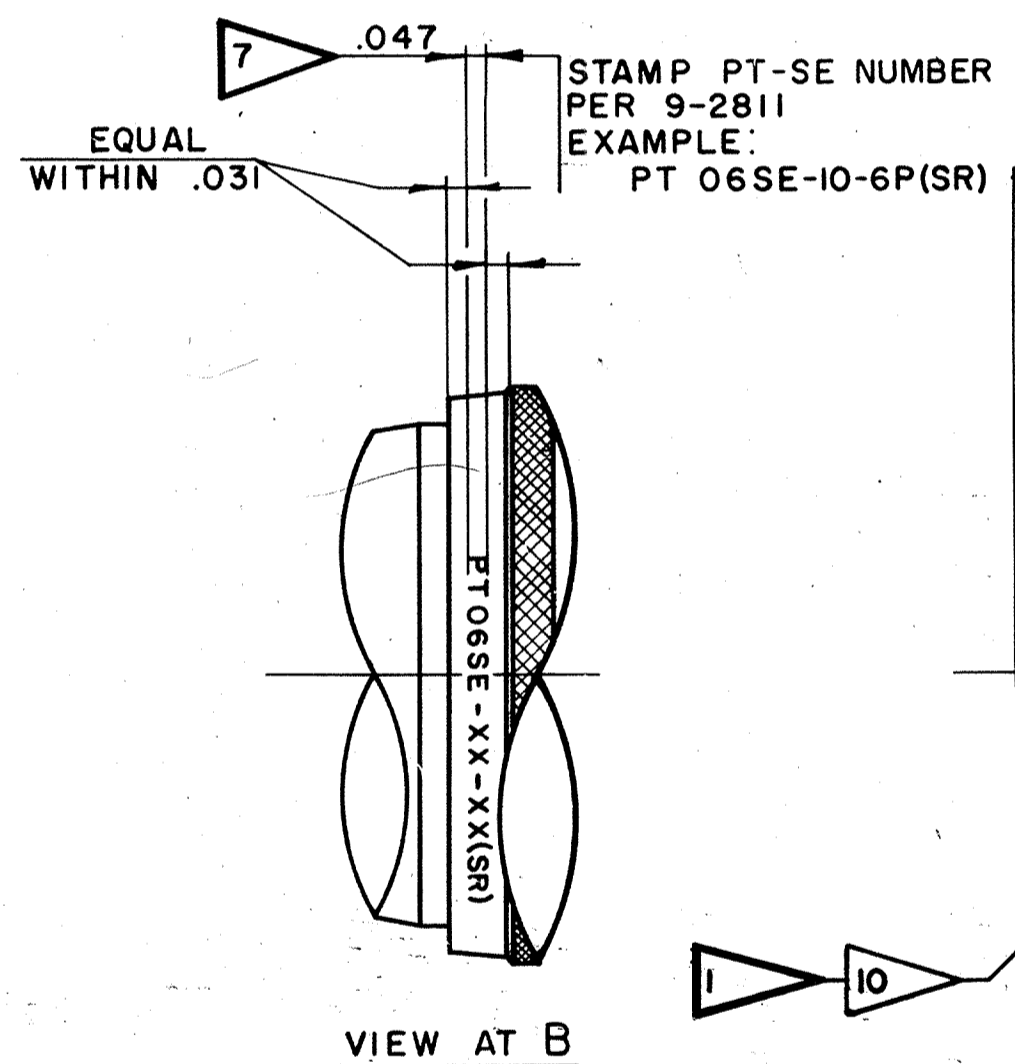
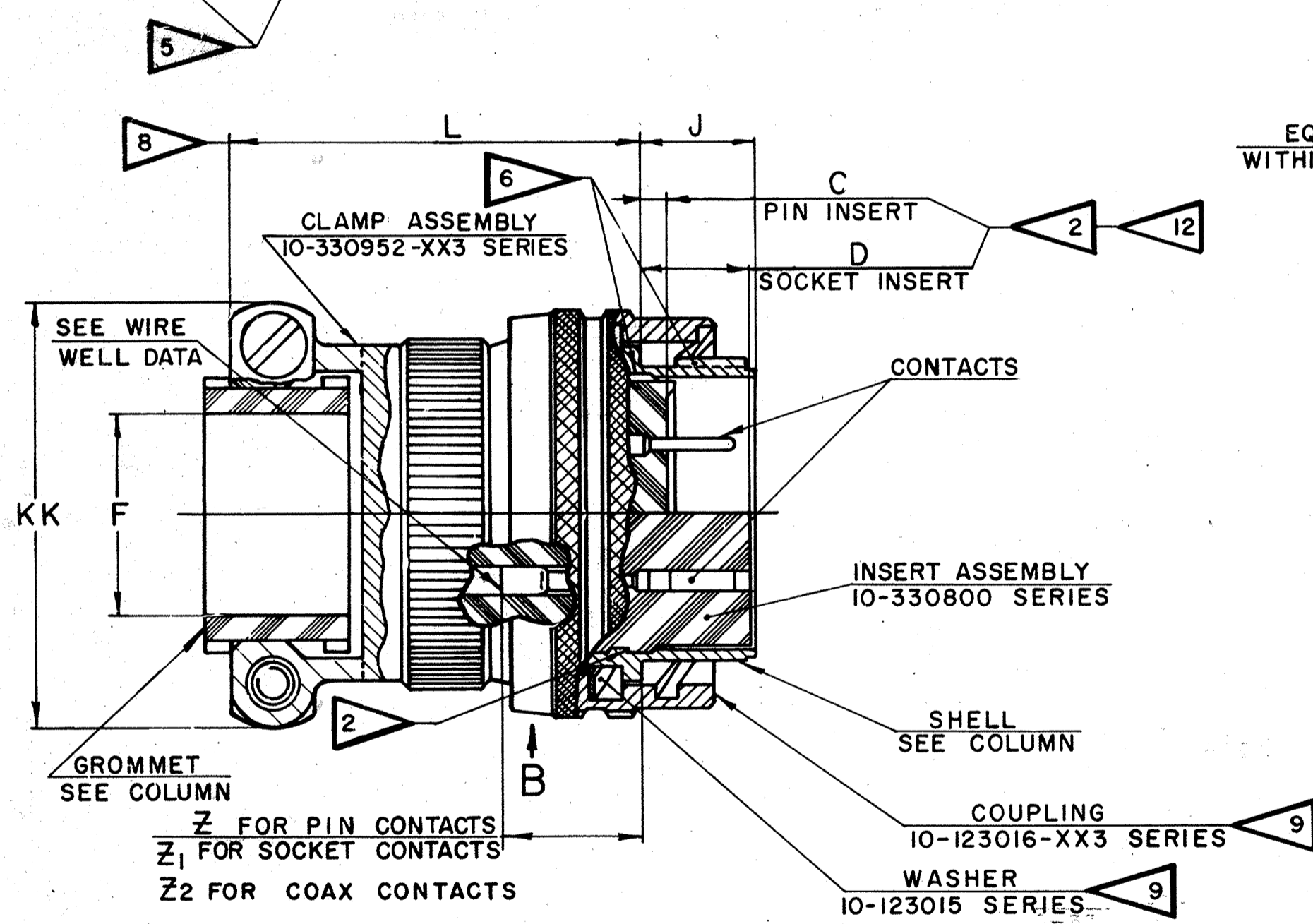


ASSEMBLY NUMBER	PT-SE NUMBER	DETAILS		DIMENSIONS											
		SHELL	GROMMET	C	D	F	J	L	M	Q	Z	Z <sub>1</sub>	KK	Z <sub>2</sub>	
				+020 -000	+020 -000	DIA		MAX	THREAD REF CLASS 2	DIA +000 -047	±045	±045	+000 -047	MAX	
71-332606-	06SE-6-	(SR)	NOT AVAILABLE												
71-332608-	-8-	10-330906-83	10-36565-101	.030	.337	.125	.353	1.547	6-32UNC	.734	.640	.579	.781	.875	
71-332610-	-10-	-103	-122			.188				.844			.844		
71-332612-	-12-	-123	-143			.312				1.016			.969		
71-332614-	-14-	-143	-163			.375				1.141			1.094		
71-332616-	-16-	-163	-183			.500		1.625		1.266			1.156		
71-332618-	-18-	-183	-203			.625		1.625	8-32UNC	1.375			1.406		
71-332620-	-20-	-203	-203	.092	.399	.625	.415	1.672		1.516	.578	.517	1.406	.812	
71-332622-	-22-	-223	-244			.750		1.672		1.641			1.594		
71-332624-	-24-	-243	-232			.800		1.734		1.761			1.688		
71-332625/50				NOT AVAILABLE											

REL NO. 36508-358		REVISIONS			COMM REC.
CHG NO.	SYM	DESCRIPTION	DATE	APPROVAL	
37753-3	1	REDRAWN BY E. MICHEL; WAS SAME SIZE 9-3836-1 (ASSY SPEC); ADD -24 & REL.-24 & DATA, NOTE 14, REV. & RELOC. GROM. COL.	7-14-60	<i>Schlad</i>	
38311-12	2	REV NOTE 11	8-18-61	<i>Schlad</i>	
38525-118	3	REVERSED LOCATION OF CLAMP BAR SCREWS	11-2-61	<i>Schlad</i>	
39070-2	4	RELOC AND REV C & D DIM	1-4-62	<i>Schlad</i>	
39606-7	A <sub>1</sub>	WAS 10-330910-XX3 SERIES (CLAMP ASSY); L ± 0.031; REV L COL	4-16-62	<i>Schlad</i>	
39525-309	A <sub>2</sub>	ADDED Z <sub>2</sub> DIM & Z <sub>2</sub> MAX COL	1-22-63	<i>Schlad</i>	
56525-56	A <sub>3</sub>	REV C COL	12-2-74	<i>Schlad</i>	
56500-63	A <sub>4</sub>	ADD & REL -8 & DATA	2-21-75	<i>Schlad</i>	
	B	(CL 11) REM NOTE 11; FLAG ECN: 74403-1	7-19-83	<i>Schlad</i>	



ACCESSORIES (NOT PART OF STANDARD ASSEMBLY)

SEE DRAWING 10-150000

USE OF THIS DOCUMENT IS UNLIMITED. DOCUMENTS REFERENCED HEREON CONTAIN LIMITED RIGHTS DATA.

7. SEE WORK ORDER FOR PERMISSIBLE ADDITIONAL OR ALTERNATE STAMPING.
  6. VERTICAL CENTERLINES OF INSERT ARRANGEMENT AND SHELL POLARIZING KEY MUST BE WITHIN .005 OF INDICATED ROTATION PER 9-2437-1.
  5. TO COMPLETE ASSY NO. & PT-SE NO., ADD APPLICABLE INSERT ARRANGEMENT SUFFIX TO BASE NUMBERS LISTED ABOVE PER 9-2437-1.
  4. FOR COMPONENT PART NUMBERS OF DESIRED ARRANGEMENT, SEE APPLICABLE PARTS LIST (PL).
  3. MATES WITH RECEPTACLE 71-332006/50 & OTHERS
  2. DIMENSIONS MUST BE MAINTAINED WHEN INSERTS ARE PRESSED FIRMLY AGAINST INDICATED SHOULDER
  1. FOR CONTACT ARRANGEMENTS, SEE DRAWINGS L-15206-( ) THRU L-15250-( ).
  14. UNITS ILLUSTRATED MEET THE MATERIAL AND FINISH REQUIREMENTS OF MIL-C-26482.
  13. FOR FINAL INSTALLATION, CONTACTS MUST BE ASSEMBLED INTO ALL INSERT HOLES. ALL UNUSED GROMMET HOLES MUST BE FILLED WITH APPROPRIATE SEALING PLUG 10-101033.
  12. INSERT LOCATING DIMENSIONS APPLY BEFORE ASSEMBLY OF CONTACTS.
  10. INSERT ASSEMBLY IS NOT REMOVABLE.
  9. COUPLING SLOTS & WASHER TO BE LUBRICATED PER 9-3502.
  8. DIMENSION INDICATES FINAL INSTALLATION, FOR STORAGE & SHIPPING, SHELL & CLAMP ASSEMBLY MUST BE LOOSELY COUPLED.
- NOTES:

COAXIAL WELL DATA		WIRE WELL DATA			
CONTACT SIZE	8	CONTACT SIZE	20	16	
CABLE TYPE	RG-195/U RG-180/U	CONDUCTOR WELL DIA	.048 +002 -000	.066 +002 -000	
		CONDUCTOR WELL DEPTH	.184 +037 -000	.234 +031 -000	
		INSULATION WELL DIA	.091 +002 -000	NOT AVAILABLE	
		INSULATION WELL DEPTH	.077 +006 -000	NOT AVAILABLE	
TEST PROCESS SPEC 9-4039-1 ASSY 9-3836-2, 9-2437-1 9-3502, 9-2811		LIST OF MATERIAL			
UNLESS OTHERWISE SPECIFIED		ABBREVIATIONS & SYMBOLS (MNC)-MAXIMUM MATERIAL CONDITION (TP)-TRUE POSITION - REF NOTE			
1. TOLERANCES: LINEAR .000 ± .010, .00 ± .02, .0 ± .1 ANGULAR ± 2°		ORIG ENG JOB NO. 99G			
2. ALL LOCATION TOLERANCES APPLY AT MAXIMUM MATERIAL CONDITION (MNC).		DRAWN: EICHORN DATE: 6-9-60			
3. RADIUS FILLETS & BREAK EDGES .005-.020.		CHECKED: M.ero DATE: 12-19-60			
4. CONCENTRICITY: .015 TIR REGARDLESS OF SIZE.		MATERIAL: MAT'L.			
FOR DRAWING INTERPRETATION SEE SPEC 9-3500		STD'S: 12-19-60			
MATERIAL SPEC		CH DRG: 12-19-60			
HEAT TREAT SPEC		APP'D: E. Barnhart 12/19/60			
FINISH SPEC		SCALE: NONE WT. CALC (SEE ACT. SPT) LBS REF: 71-197606/50 DRAWING SIZE: C TAB.			

CONNECTOR, ELECTRICAL PLUG, TYPE PT-SE ( ) MC, OLIVE DRAB

**Bendix**  
SCINTILLA DIVISION  
BENDIX AVIATION CORPORATION  
SIDNEY, N.Y., U.S.A.  
71-332606 THRU 71-332650

71-332606 THRU 71-332650

## X-ON Electronics

Largest Supplier of Electrical and Electronic Components

*Click to view similar products for [Amphenol manufacturer](#):*

Other Similar products are found below :

[PT01SE-16-8P\(027\)](#) [PT01SE-16-8P\(476\)](#) [CTV06RW-11-2JB-LC](#) [97-3108A-22-14P](#) [10-474017-10P](#) [MS27473P14B18S](#) [TV06RW-25-90AE](#)  
[CTVS06RF-25-46PB-LC](#) [PT02E10-2PW](#) [PT02E10-2PX](#) [97-3106A18-3PX-958](#) [97-3106A18-3PY-958](#) [PT06J20-24SW](#) [TV06RL-13-35AD](#)  
[TV06RL-13-98BD](#) [TV06RW-25-46AE](#) [TV06RL-13-35SD-LC](#) [TV06RL-13-35SD](#) [TV06RL-13-98SD-LC](#) [TV06RL-13-98SD](#) [TVP00RW-23-](#)  
[53AD](#) [PT02E10-2PW-025](#) [100-007-213-002-001](#) [2M805-002-16NF23-12PA](#) [97-3108B16S-5PW-417](#) [97-3108B16S-5PY-417](#) [CS-](#)  
[DSDMDB37MF-025](#) [97-3108B16S-5PZ-417](#) [GTC02R32-17S-025-RDS](#) [PT06SE2041P](#) [CF-5A9013-04N](#) [CF-6A4615-06N](#) [GTC02R32-17S-](#)  
[025-RDS-LC](#) [GTC02R32-17S-025-LC](#) [PT06SE-24-61P\(LC\)](#) [SP28W1F](#) [TV07DT-25-37P](#) [TV07DT-25-37JN-LC](#) [TV07DT-25-37S](#) [TV07DT-](#)  
[25-37S-LC](#) [TV07DT-25-46P-LC](#) [97-3101A20-21P-958](#) [TV07DT-25-90P-LC](#) [TV07DT-25-46A](#) [TV07DT-25-37P-LC](#) [GTS08-36-22PZ-025-](#)  
[B30](#) [PT00SP2241P](#) [CTVPS00RF-15-15AC](#) [LJT06RT-15-35PB\(023\)](#) [TVS07RF-15-15AB](#)