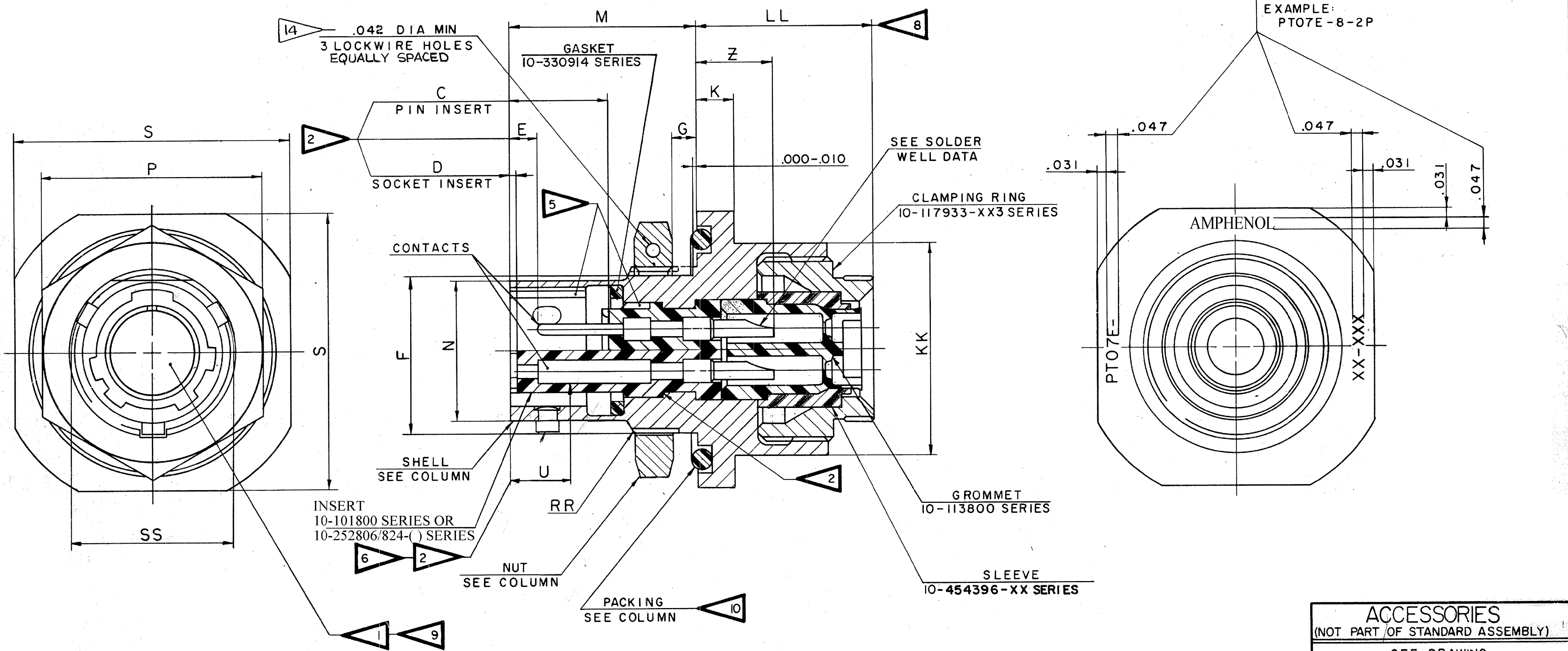


| SYM CHG NO. | WAS | DATE | D'MAN | APPR'D | REL 32508-147 | WAS | DATE | D'MAN | APP'D |
|-------------|--|----------|-----------|--------|---------------|-----------|----------|-------------|-------|
| A7 | 53909 -16 | 7-6-72 | Caudale | Haye | 1 | CNR | 3-28-57 | A NILES | |
| B | 25768 | 10/29/51 | McElroy | PGP | 2 | 34105-19 | 5-28-58 | MOORE | |
| C | 96934 | 11-13-06 | JONES | | 3 | 33524-408 | 7-29-58 | MOORE | |
| D | | 7-30-08 | H.BROOKER | | A1 | 34647-34 | 12-8-58 | WONSKI | |
| | (CL II) SLEEVE 10-117932 -XX3 SERIES | | | | A2 | 35897-1 | 10-12-59 | Lambrecht | |
| | (CL II) (CL II) SEE CHG NOTICE | | | | A3 | 35904-3 | 1-8-60 | RICKS | |
| | (CL II) ADDED ADD'L SERIES FOR INSERT NUMBER | | | | A4 | 36162-17 | 1-28-60 | W. K. H. J. | |
| | (CL II) 71-148718-80P BECOME A SEPARATE DRAWING ECN: A4445 | | | | A5 | 38535-301 | 1-22-62 | HALL | |
| | | | | | A6 | 42525-621 | 4-3-64 | Lambrecht | |



ACCESSORIES
(NOT PART OF STANDARD ASSEMBLY)
SEE DRAWING
10-150000

USE OF THIS DOCUMENT IS UNLIMITED. DOCUMENTS REFERENCED HEREON CONTAIN LIMITED RIGHTS DATA.

| ITEM NO. | QTY REQD | DESCRIPTION | PART NUMBER | CODE IDENT | ZONE | NEXT ASSEMBLY |
|---|----------|-------------------|------------------------|--|-------------------|--------------------------|
| PARTS LIST | | | | | | |
| UNLESS OTHERWISE SPECIFIED | | DRAWN: VIMISLIK | DATE: 1-10-57 | THE Bendix CORPORATION SCINTILLA DIVISION SIDNEY, NEW YORK, U.S.A. TITLE: CONNECTOR, ELECTRICAL RECEPTACLE, TYPE PT-E()JFW OLIVE DRAB | | |
| LINEAR DIMENSIONS ARE IN INCHES. TOLERANCES: 3 PLACES ±.010; 2 PLACES ±.03; 1 PLACE ±.1; ANGLES ±2°. OTHER STANDARDS PER SCINTILLA SPEC 9-3800 AND MIL-STD 8. | | CHECKED: Kovarick | DATE: 2-25-57 | | | |
| MATERIAL SPEC | | STANDARDS: Whist | Development: Whist | | | |
| PROCESS SPEC | | DRAFTING: Bryano | ENGINEERING: Whennessy | | | |
| SEE SHEET 2 | | DEVELOPMENT: | | CODE IDENT NO. 77820 | SIZE C | 71-148706 THRU 71-148750 |
| | | | | SCALE NONE | WT SEE PARTS LIST | SHEET 1 OF 2 |

NOTES: REF SYMBOL ◁
SEE SHEET 2.

71-148706/50

SEE SHEET 1 FOR ALL CHANGES

| ASSEMBLY NUMBER | PT NUMBER | DETAILS | | | | | | DIMENSIONS | | | | | | | | | | | | | | | | |
|-----------------|-----------|---------------|--------------|-------------|------|------|------|------------|------|------|------|------|-------|-------|-------|------|------------|--------|-------|--------------------|----------------|--------|-------|--|
| | | SHELL | NUT | PACKING | G | D | E | F | G | | K | M | N DIA | P HEX | S | Z | KK DIA MAX | LL MAX | U MAX | RR THREAD (PLATED) | | SS DIA | | |
| | | | | | | | | | MIN | MAX | | | | | | | | | | SIZE CLASS | 2A | | | |
| 71-148706- | 07E-6- | 10-150923-63 | 10-123017-63 | 10-90351-15 | .337 | .025 | .085 | .405 | .062 | .125 | .125 | .696 | .348 | .625 | .812 | .191 | | .604 | .568 | .153 | .4375-28 UNEF | | .439 | |
| 71-148708- | -8- | -83 | -83 | -17 | | | | .530 | | | | | .473 | .750 | .938 | | | .729 | | | .5625-24 UNEF | | .563 | |
| 71-148710- | -10- | -103 | -103 | -19 | | | | .655 | | | | | .590 | .875 | 1.062 | | | .854 | | | .6875-24 UNEF | | .680 | |
| 71-148712- | -12- | -123 | -123 | -22 | | | | .818 | | | | | .750 | 1.062 | 1.250 | | | .979 | | | .8750-20 UNEF | | .859 | |
| 71-148714- | -14- | -143 | -143 | -24 | | | | .942 | | | | | .875 | 1.188 | 1.375 | | | 1.104 | | | 1.0000-20 UNEF | | .984 | |
| 71-148716- | -16- | -163 | -163 | -26 | | | | 1.066 | | | | | 1.000 | 1.312 | 1.500 | | | 1.229 | | | 1.1250-18 UNEF | | 1.108 | |
| 71-148718- | -18- | -183 | -183 | -28 | ↓ | ↓ | ↓ | 1.191 | ↓ | ↓ | ↓ | | 1.125 | 1.438 | 1.625 | ↓ | | 1.354 | ↓ | ↓ | 1.2500-18 UNEF | | 1.233 | |
| 71-148720- | -20- | -203 | -203 | -128 | .399 | .087 | .147 | 1.316 | | .250 | .156 | .884 | 1.250 | 1.562 | 1.812 | .221 | | 1.510 | .630 | .215 | 1.3750-18 UNEF | | 1.358 | |
| 71-148722- | -22- | -223 | -223 | -130 | .399 | .087 | .147 | 1.441 | | .250 | .156 | .884 | 1.375 | 1.688 | 1.938 | .221 | | 1.635 | .630 | .215 | 1.5000-18 UNEF | | 1.483 | |
| 71-148724- | -24- | -243 | -243 | -132 | .399 | .087 | .147 | 1.566 | ↓ | .250 | .156 | .917 | 1.500 | 1.812 | 2.062 | .188 | | 1.760 | .660 | .215 | 1.6250-18 UNEF | | 1.610 | |
| 71-148725/50 | | NOT AVAILABLE | | | | | | | | | | | | | | | | | | | | | | |

4

NOTES: REF SYMBOL ◀

- FOR CONTACT ARRANGEMENTS, SEE DRAWINGS L-15206-() THRU L-15250-().
- DIMENSIONS MUST BE MAINTAINED WHEN INSERTS ARE PRESSED FIRMLY AGAINST INDICATED SHOULDER.
- FOR COMPONENT PART NUMBERS OF DESIRED ARRANGMENT, SEE APPLICABLE PARTS LIST.
- TO COMPLETE ASSY NO. & PT NO., ADD APPLICABLE INSERT ARRANGEMENT SUFFIX TO BASE NUMBERS LIST ABOVE PER 9-2437-1.
- VERTICAL CENTERLINES OF INSERT ARRANGEMENT & THE MAIN SHELL POLARIZING KEYWAY TO BE WITHIN .005 OF INDICATED ROTATION PER 9-2437-1.
- DISTANCE BETWEEN END OF SHELL AND THE POINT AT WHICH A GAGE PIN, HAVING THE SAME BASIC DIAMETER AS THE MATING CONTACT AND A SQUARE FACE, ENGAGES SOCKET CONTACT SPRING.

- SEE WORK ORDER FOR PERMISSIBLE ADDITIONAL OR ALTERNATE STAMPING.
- DIMENSION INDICATES FINAL INSTALLATION. FOR STORAGE & SHIPPING, SHELL & CLAMP ASSEMBLY MUST BE LOOSELY COUPLED.
- INSERTS & CONTACTS MUST NOT BE REMOVED.
- FOR MAXIMUM SEALING EFFICIENCY APPLY LIGHT COAT OF 9-1564 COMPOUND (MIL-I-8660) TO PACKING.
- SEE DRAWING 71-148606 THRU 71-148650 FOR REQUIRED MATING PLUG ASSEMBLY.
- UNITS ILLUSTRATED MEET THE MATERIAL AND FINISH REQUIREMENTS OF MIL-C-26482.
- ALL UNUSED GROMMET HOLES TO BE FILLED WITH GROMMET SEALING ROD OR GROMMET SEALING PLUGS. SEE 10-150000 (#27 & #28).
- FORMED LOCKWIRE HOLE DESIGN (6 HOLES) OPTIONAL.

| SOLDER WELL DATA | | | |
|---|--------------------------------------|--|-----------------------------------|
| CONTACT SIZE | 20 | 16 | |
| WELL DIA | .046 ⁺⁰⁰⁴ ₋₀₀₀ | .078 ⁺⁰⁰⁴ ₋₀₀₂ | |
| WELL DEPTH | .125 ⁺⁰³¹ ₋₀₀₀ | .188 | |
| ITEM NO. | QTY REQD | DESCRIPTION | PART NUMBER |
| PARTS LIST | | | |
| UNLESS OTHERWISE SPECIFIED | | DRAWN: NICHOLS | DATE: 1-8-57 |
| LINEAR DIMENSIONS ARE IN INCHES. TOLERANCES: 3 PLACES ± .010; 2 PLACES ± .03; 1 PLACE ± .1; ANGLES ± 2°. OTHER STANDARDS PER SCINTILLA SPEC 9-3800 AND MIL-STD 8. | | CHECKED: Kovarick | DATE: 2-25-57 |
| MATERIAL SPEC | PROCESS SPEC | MATERIAL: | STANDARDS: <i>Whit</i> <i>dim</i> |
| | TEST 9-3980-1 | DRAFTING: <i>Vengaw</i> | ENGINEERING: <i>Whit</i> |
| | ASSY 9-3605-2 | DEVELOPMENT: | |
| | 9-2437-1 | | |
| | 9-2811, 9-1564 | | |
| | FINISH SPEC. | | |
| SCINTILLA DIVISION | | THE Bendix CORPORATION | |
| SIDNEY, NEW YORK, U.S.A. | | TITLE: CONNECTOR, ELECTRICAL RECEPTACLE. TYPE PT-E()JFW OLIVE DRAB | |
| CODE IDENT NO. | SIZE | 71-148706 THRU 71-148750 | |
| 77820 | C | | |
| SCALE NONE | WT SEE PARTS LIST | REF | SHEET 2 OF 2 |

71-148706/50

X-ON Electronics

Largest Supplier of Electrical and Electronic Components

Click to view similar products for [Circular MIL Spec Connector](#) category:

Click to view products by [Amphenol](#) manufacturer:

Other Similar products are found below :

[89075GULPR](#) [0025-262-542](#) [0025-264-3014](#) [58-570121-04S](#) [0134-213-1208](#) [0134-213-2209](#) [0025-258-000](#) [60-042022-07P](#) [60-042022-19P](#)
[60-042022-23P](#) [60-042217-10P](#) [60-042217-11P](#) [0114-201-1278](#) [012-0467-000](#) [602GB06EG24-61SN](#) [0134-201-1207](#) [0134-213-1006](#) [6104-](#)
[207-2302](#) [6104-208-1902](#) [61-168211-04P](#) [61-168617-10P](#) [6131-202-19149P](#) [6131-204-21149P](#) [6131-208-13149P](#) [6131-209-17149P](#) [6131-](#)
[210-11149P](#) [6131-211-19149P](#) [6131-216-19149P](#) [6131-259-21149P](#) [6131-259-23149P](#) [6131-265-17149P](#) [6131-265-19149P](#) [CS3100A18-1P-](#)
[472](#) [CS3100A-36-77P](#) [CS3101A-16-55P](#) [CS3102A-10SL-55P](#) [CS3102A-14S-58P](#) [CS3102A-18-1P116](#) [CS3102A-32-17P](#) [CS3102A32-25S](#)
[CS3102C18-4P-472](#) [CS3106A10SL3S004](#) [CS3106A-18-73S](#) [CS3108A-14S-52S](#) [CS3108A-28-51S](#) [6162-233-1277](#) [6162-324-1231](#)
[M243082296Z](#) [M2884010AC1S1](#) [CT0-24-10SC](#)