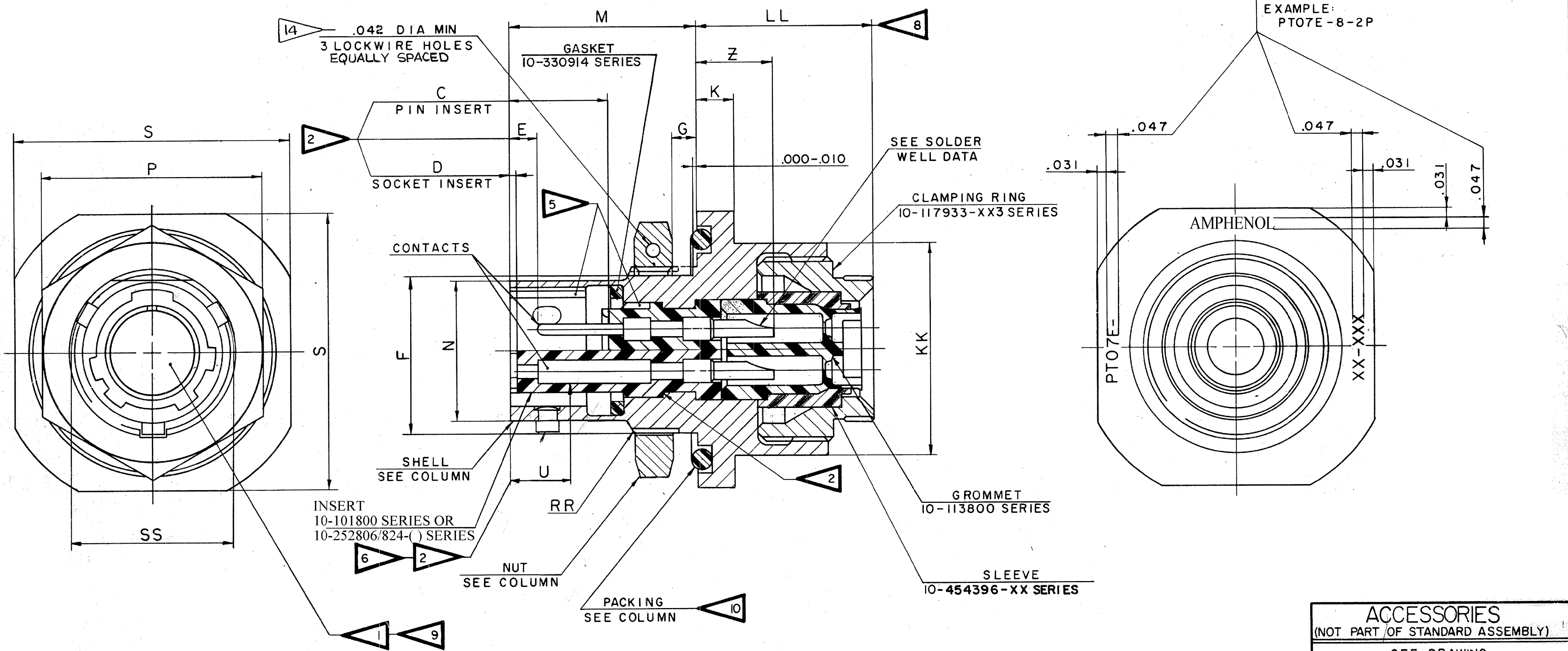


SYM CHG NO.	WAS	DATE	D'MAN	APPR'D	REL 32508-147	WAS	DATE	D'MAN	APP'D
A7	53909 -16	7-6-72	Caudell	Hage	1	CNR	3-28-57	A NILES	
B	25768	10/29/51	M'ellipott	P. G. S.	2	34105-19	5-28-58	MOORE	
C	96934	11-13-06	JONES		3	33524-408	7-29-58	MOORE	
D		7-30-08	H.BROOKER		A1	34647-34	12-8-58	WONSKI	
					A2	35897-1	10-12-59	Lambrecht	
					A3	35904-3	1-8-60	RICKS	
					A4	36162-17	1-28-60	W. K. H. J.	
					A5	38535-301	1-22-62	HALL	
					A6	42525 -621	4-3-64	Lambrecht	



ACCESSORIES
(NOT PART OF STANDARD ASSEMBLY)
SEE DRAWING
10-150000

USE OF THIS DOCUMENT IS UNLIMITED. DOCUMENTS REFERENCED HEREON CONTAIN LIMITED RIGHTS DATA.

ITEM NO.	QTY REQD	DESCRIPTION	PART NUMBER	CODE IDENT	ZONE	NEXT ASSEMBLY
PARTS LIST						
UNLESS OTHERWISE SPECIFIED		DRAWN: VIMISLIK	DATE: 1-10-57	THE Bendix CORPORATION SCINTILLA DIVISION SIDNEY, NEW YORK, U.S.A.		
LINEAR DIMENSIONS ARE IN INCHES. TOLERANCES: 3 PLACES ±.010; 2 PLACES ±.03; 1 PLACE ±.1; ANGLES ±2°. OTHER STANDARDS PER SCINTILLA SPEC 9-3800 AND MIL-STD 8.		CHECKED: Kovarick	DATE: 2-25-57			
MATERIAL SPEC	PROCESS SPEC	STANDARDS: Whist	STN			
	SEE SHEET 2	DRAFTING: Bergano	ENGINEERING: Whennessy			
		DEVELOPMENT:		TITLE: CONNECTOR, ELECTRICAL RECEPTACLE, TYPE PT-E(J)FW OLIVE DRAB		
				CODE IDENT NO.	SIZE	71-148706 THRU 71-148750
				77820	C	
				SCALE NONE	WT. SEE PARTS LIST	SHEET 1 OF 2

NOTES: REF SYMBOL ◁
SEE SHEET 2.

71-148706/50

SEE SHEET 1 FOR ALL CHANGES

ASSEMBLY NUMBER	PT NUMBER	DETAILS			DIMENSIONS															SS DIA +.000 -016			
		SHELL	NUT	PACKING	G	K	M	N DIA	P HEX	S	Z	KK DIA MAX	LL MAX	U MAX	RR THREAD (PLATED)								
															CLASS	2A							
71-148706-	07E-6-	10-150923-63	10-123017-63	10-90351-15	.337	.025	.085	.405	.062	.125	.125	.696	.348	.625	.812	.191		.604	.568	.153	.4375-28 UNEF		.439
71-148708-	-8-	-83	-83	-17				.530					.473	.750	.938			.729			.5625-24 UNEF		.563
71-148710-	-10-	-103	-103	-19				.655					.590	.875	1.062			.854			.6875-24 UNEF		.680
71-148712-	-12-	-123	-123	-22				.818					.750	1.062	1.250			.979			.8750-20 UNEF		.859
71-148714-	-14-	-143	-143	-24				.942					.875	1.188	1.375			1.104			1.0000-20 UNEF		.984
71-148716-	-16-	-163	-163	-26				1.066					1.000	1.312	1.500			1.229			1.1250-18 UNEF		1.108
71-148718-	-18-	-183	-183	-28	↓	↓	↓	1.191	↓	↓	↓		1.125	1.438	1.625	↓		1.354	↓	↓	1.2500-18 UNEF		1.233
71-148720-	-20-	-203	-203	-128	.399	.087	.147	1.316		.250	.156	.884	1.250	1.562	1.812	.221		1.510	.630	.215	1.3750-18 UNEF		1.358
71-148722-	-22-	-223	-223	-130	.399	.087	.147	1.441		.250	.156	.884	1.375	1.688	1.938	.221		1.635	.630	.215	1.5000-18 UNEF		1.483
71-148724-	-24-	-243	-243	-132	.399	.087	.147	1.566	↓	.250	.156	.917	1.500	1.812	2.062	.188		1.760	.660	.215	1.6250-18 UNEF		1.610
71-148725/50		NOT AVAILABLE																					

4

NOTES: REF SYMBOL ◀

- FOR CONTACT ARRANGEMENTS, SEE DRAWINGS L-15206-() THRU L-15250-().
- DIMENSIONS MUST BE MAINTAINED WHEN INSERTS ARE PRESSED FIRMLY AGAINST INDICATED SHOULDER.
- FOR COMPONENT PART NUMBERS OF DESIRED ARRANGMENT, SEE APPLICABLE PARTS LIST.
- TO COMPLETE ASSY NO. & PT NO., ADD APPLICABLE INSERT ARRANGEMENT SUFFIX TO BASE NUMBERS LIST ABOVE PER 9-2437-1.
- VERTICAL CENTERLINES OF INSERT ARRANGEMENT & THE MAIN SHELL POLARIZING KEYWAY TO BE WITHIN .005 OF INDICATED ROTATION PER 9-2437-1.
- DISTANCE BETWEEN END OF SHELL AND THE POINT AT WHICH A GAGE PIN, HAVING THE SAME BASIC DIAMETER AS THE MATING CONTACT AND A SQUARE FACE, ENGAGES SOCKET CONTACT SPRING.

- SEE WORK ORDER FOR PERMISSIBLE ADDITIONAL OR ALTERNATE STAMPING.
- DIMENSION INDICATES FINAL INSTALLATION. FOR STORAGE & SHIPPING, SHELL & CLAMP ASSEMBLY MUST BE LOOSELY COUPLED.
- INSERTS & CONTACTS MUST NOT BE REMOVED.
- UNITS ILLUSTRATED MEET THE MATERIAL AND FINISH REQUIREMENTS OF MIL-C-26482.
- SEE DRAWING 71-148606 THRU 71-148650 FOR REQUIRED MATING PLUG ASSEMBLY.
- FOR MAXIMUM SEALING EFFICIENCY APPLY LIGHT COAT OF 9-1564 COMPOUND (MIL-I-8660) TO PACKING.
- FORMED LOCKWIRE HOLE DESIGN (6 HOLES) OPTIONAL.
- ALL UNUSED GROMMET HOLES TO BE FILLED WITH GROMMET SEALING ROD OR GROMMET SEALING PLUGS. SEE 10-150000 (#27 & #28).

SOLDER WELL DATA			
CONTACT SIZE	20	16	
WELL DIA	.046 ⁺⁰⁰⁴ ₋₀₀₀	.078 ⁺⁰⁰⁴ ₋₀₀₂	
WELL DEPTH	.125 ⁺⁰³¹ ₋₀₀₀	.188	
ITEM NO.	QTY REQD	DESCRIPTION	PART NUMBER
PARTS LIST			
UNLESS OTHERWISE SPECIFIED		DRAWN: NICHOLS	DATE: 1-8-57
LINEAR DIMENSIONS ARE IN INCHES. TOLERANCES: 3 PLACES ± .010; 2 PLACES ± .03; 1 PLACE ± .1; ANGLES ± 2°. OTHER STANDARDS PER SCINTILLA SPEC 9-3800 AND MIL-STD 8.		CHECKED: Kovarick	DATE: 2-25-57
MATERIAL SPEC	PROCESS SPEC	MATERIAL:	STANDARDS: <i>Whit</i> <i>dim</i>
	TEST 9-3980-1	DRAFTING: <i>Vengaw</i>	ENGINEERING: <i>Whit</i>
	ASSY 9-3605-2	DEVELOPMENT:	
	9-2437-1		
	9-2811, 9-1564		
	FINISH SPEC.		
		SCINTILLA DIVISION	
		CORPORATION	
		SIDNEY, NEW YORK, U.S.A.	
CONNECTOR, ELECTRICAL RECEPTACLE.			
TYPE PT-E()JFW			
OLIVE DRAB			
CODE IDENT NO.	SIZE	71-148706 THRU	
77820	C	71-148750	
SCALE	WT	REF	SHEET 2 OF 2
NONE	SEE PARTS LIST		

71-148706/50

X-ON Electronics

Largest Supplier of Electrical and Electronic Components

Click to view similar products for [Circular MIL Spec Connector](#) category:

Click to view products by [Amphenol](#) manufacturer:

Other Similar products are found below :

[89075GULPR](#) [0025-262-542](#) [0025-264-3014](#) [58-570121-04S](#) [0134-213-1208](#) [0134-213-2209](#) [0025-258-000](#) [60-042022-07P](#) [60-042022-19P](#)
[60-042022-23P](#) [60-042217-10P](#) [0114-201-1278](#) [012-0467-000](#) [602GB06EG24-61SN](#) [0134-201-1207](#) [0134-213-1006](#) [6104-207-2302](#) [6104-](#)
[208-1902](#) [61-168211-04P](#) [61-168617-10P](#) [6131-202-19149P](#) [6131-204-21149P](#) [6131-208-13149P](#) [6131-209-17149P](#) [6131-210-11149P](#) [6131-](#)
[211-19149P](#) [6131-216-19149P](#) [6131-259-21149P](#) [6131-259-23149P](#) [6131-265-17149P](#) [6131-265-19149P](#) [CS3100A18-1P-472](#) [CS3100A-36-](#)
[77P](#) [CS3101A-16-55P](#) [CS3102A-10SL-55P](#) [CS3102A-14S-58P](#) [CS3102A-32-17P](#) [CS3102A32-25S](#) [CS3102C18-4P-472](#)
[CS3106A10SL3S004](#) [CS3106A-18-73S](#) [CS3108A-14S-52S](#) [CS3108A-28-51S](#) [6162-233-1277](#) [6162-324-1231](#) [M243082296Z](#)
[M2884010AC1S1](#) [CT0-24-10SC](#) [CT0M20-7PCAU](#) [M28840/17AC1G3](#)