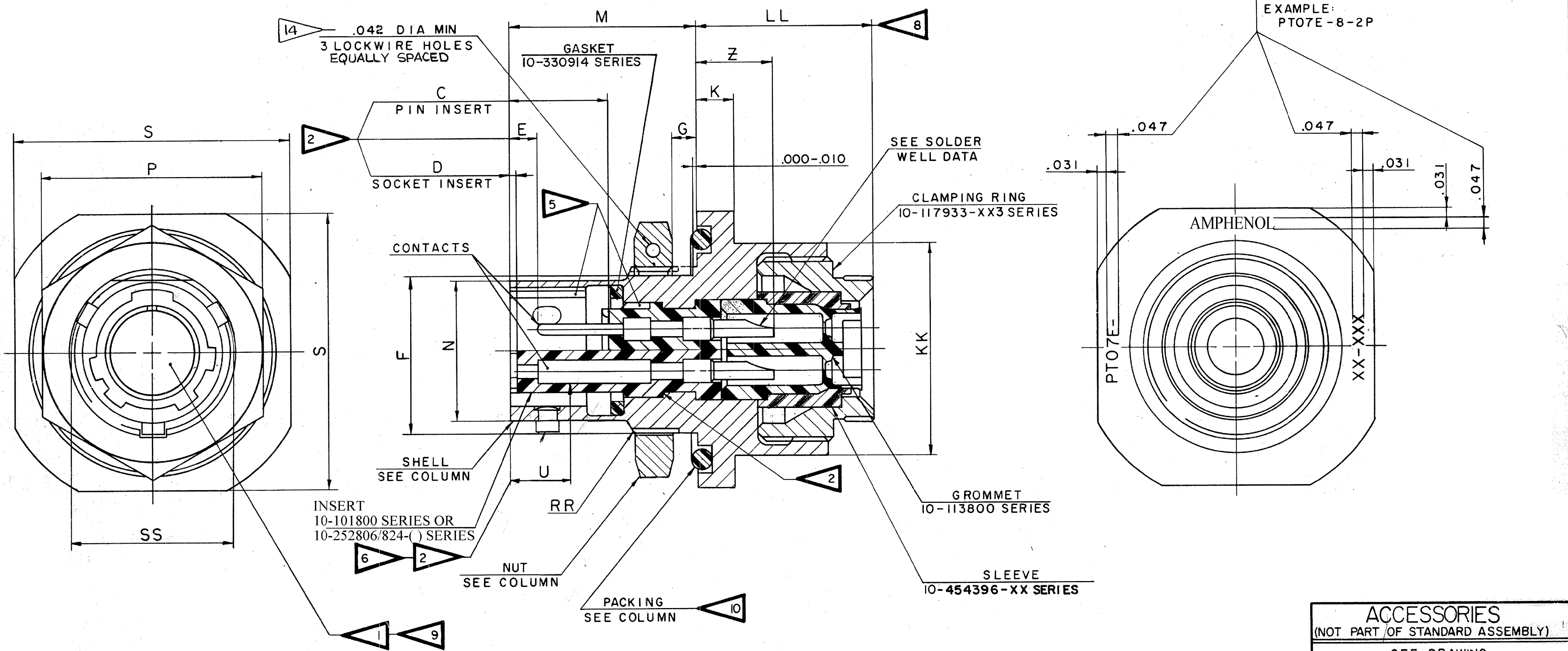


SYM	CHG NO.	WAS	DATE	D'MAN	APPR'D	REL	32508-147	WAS	DATE	D'MAN	APP'D
A7	53909 -16	SLEEVE 10-117932 -XX3 SERIES	7-6-72	Caudell	Hage	1	CNR	REM. PP DIMS & COLUMN. CHG'D PICT	3-28-57	A NILES	
B	25768	(CL II) SEE CHG NOTICE	10/29/91	M'ellipott	P. G. S.	2	34105-19	N + .000 - .005 DIA	5-28-58	MOORE	
C	96934	(CL II) ADDED ADD'L SERIES FOR INSERT NUMBER	11-13-06	JONES		3	33524-408	ADD 8 REL SIZE 24 & DATA.	7-29-58	MOORE	
D		(CL II) 71-148718-80P BECOME A SEPARATE DRAWING ECN: A4445	7-30-08	H.BROOKER		A1	34647-34	.047 + .004 - .002 DIA, REM: .125 +.016 - .000, .062 MAX NOTE, COL DD & DATA, REV COL M, Z & LL, STANDARDIZED	12-8-58	WONSKI	
						A2	35897-1	K + .000 - .018 COL	10-12-59	Lambrecht	
						A3	35904-3	9-3105-2 (ASSY SPEC), SS DIA MAX COL, REM PITCH DIA, REV SS COL.	1-8-60	RICKS	
						A4	36162-17	TEST 9-3353-1, ASSY 9-3105-2 (PRO SPEC)	1-28-60	W. K. H. J.	
						A5	38535-301	10-90350 SERIES (PACKING)	1-22-62	HALL	
						A6	42525 -621	REM SEE NOTE 1 (FIN. SPEC) ADD GASKET 10-330914 SERIES; 9-1564 (PRO SPEC) REV NOTES 4, 10, 11, RR THD, TITLE	4-3-64	Lambrecht	



**ACCESSORIES**  
(NOT PART OF STANDARD ASSEMBLY)  
SEE DRAWING  
10-150000

USE OF THIS DOCUMENT IS UNLIMITED. DOCUMENTS  
REFERENCED HEREON CONTAIN LIMITED RIGHTS DATA.

ITEM NO.	QTY REQD	DESCRIPTION	PART NUMBER	CODE IDENT	ZONE	NEXT ASSEMBLY
<b>PARTS LIST</b>						
UNLESS OTHERWISE SPECIFIED		DRAWN: VIMISLIK	DATE: 1-10-57	<b>SCINTILLA DIVISION</b> SIDNEY, NEW YORK, U.S.A.		
LINEAR DIMENSIONS ARE IN INCHES. TOLERANCES: 3 PLACES ± .010; 2 PLACES ± .03; 1 PLACE ± .1; ANGLES ± 2°. OTHER STANDARDS PER SCINTILLA SPEC 9-3800 AND MIL-STD 8.		CHECKED: Kovarick	DATE: 2-25-57			
MATERIAL SPEC	PROCESS SPEC SEE SHEET 2	STANDARDS: Whist	STN			
		DRAFTING: Bryano	ENGINEERING: Whennessy			
		DEVELOPMENT:		<b>CONNECTOR, ELECTRICAL RECEPTACLE, TYPE PT-E()JFW OLIVE DRAB</b>		
				CODE IDENT NO.	SIZE	71-148706 THRU 77820 C 71-148750
				SCALE NONE	WT. SEE PARTS LIST	SHEET 1 OF 2

NOTES: REF SYMBOL ◁  
SEE SHEET 2.

71-148706/50

SEE SHEET 1 FOR ALL CHANGES

ASSEMBLY NUMBER	PT NUMBER	DETAILS			DIMENSIONS																		
		SHELL	NUT	PACKING	G	D	E	F	PANEL THK		K	M	N DIA	P HEX	S	Z	KK DIA MAX	LL MAX	U MAX	RR THREAD (PLATED)		SS DIA	
									MIN	MAX										SIZE CLASS	2A		+000
71-148706-	07E-6-	10-150923-63	10-123017-63	10-90351-15	.337	.025	.085	.405	.062	.125	.125	.696	.348	.625	.812	.191		.604	.568	.153	.4375-28 UNEF		.439
71-148708-	-8-	-83	-83	-17				.530					.473	.750	.938			.729			.5625-24 UNEF		.563
71-148710-	-10-	-103	-103	-19				.655					.590	.875	1.062			.854			.6875-24 UNEF		.680
71-148712-	-12-	-123	-123	-22				.818					.750	1.062	1.250			.979			.8750-20 UNEF		.859
71-148714-	-14-	-143	-143	-24				.942					.875	1.188	1.375			1.104			1.0000-20 UNEF		.984
71-148716-	-16-	-163	-163	-26				1.066					1.000	1.312	1.500			1.229			1.1250-18 UNEF		1.108
71-148718-	-18-	-183	-183	-28	↓	↓	↓	1.191		↓	↓	↓	1.125	1.438	1.625	↓		1.354	↓	↓	1.2500-18 UNEF		1.233
71-148720-	-20-	-203	-203	-128	.399	.087	.147	1.316		.250	.156	.884	1.250	1.562	1.812	.221		1.510	.630	.215	1.3750-18 UNEF		1.358
71-148722-	-22-	-223	-223	-130	.399	.087	.147	1.441		.250	.156	.884	1.375	1.688	1.938	.221		1.635	.630	.215	1.5000-18 UNEF		1.483
71-148724-	-24-	-243	-243	-132	.399	.087	.147	1.566	↓	.250	.156	.917	1.500	1.812	2.062	.188		1.760	.660	.215	1.6250-18 UNEF		1.610
71-148725/50		NOT AVAILABLE																					

4

NOTES: REF SYMBOL ◀

- FOR CONTACT ARRANGEMENTS, SEE DRAWINGS L-15206-( ) THRU L-15250-( ).
- DIMENSIONS MUST BE MAINTAINED WHEN INSERTS ARE PRESSED FIRMLY AGAINST INDICATED SHOULDER.
- FOR COMPONENT PART NUMBERS OF DESIRED ARRANGMENT, SEE APPLICABLE PARTS LIST.
- TO COMPLETE ASSY NO. & PT NO., ADD APPLICABLE INSERT ARRANGEMENT SUFFIX TO BASE NUMBERS LIST ABOVE PER 9-2437-1.
- VERTICAL CENTERLINES OF INSERT ARRANGEMENT & THE MAIN SHELL POLARIZING KEYWAY TO BE WITHIN .005 OF INDICATED ROTATION PER 9-2437-1.
- DISTANCE BETWEEN END OF SHELL AND THE POINT AT WHICH A GAGE PIN, HAVING THE SAME BASIC DIAMETER AS THE MATING CONTACT AND A SQUARE FACE, ENGAGES SOCKET CONTACT SPRING.

- SEE WORK ORDER FOR PERMISSIBLE ADDITIONAL OR ALTERNATE STAMPING.
- DIMENSION INDICATES FINAL INSTALLATION. FOR STORAGE & SHIPPING, SHELL & CLAMP ASSEMBLY MUST BE LOOSELY COUPLED.
- INSERTS & CONTACTS MUST NOT BE REMOVED.
- UNITS ILLUSTRATED MEET THE MATERIAL AND FINISH REQUIREMENTS OF MIL-C-26482.
- SEE DRAWING 71-148606 THRU 71-148650 FOR REQUIRED MATING PLUG ASSEMBLY.
- FOR MAXIMUM SEALING EFFICIENCY APPLY LIGHT COAT OF 9-1564 COMPOUND (MIL-I-8660) TO PACKING.
- FORMED LOCKWIRE HOLE DESIGN (6 HOLES) OPTIONAL.
- ALL UNUSED GROMMET HOLES TO BE FILLED WITH GROMMET SEALING ROD OR GROMMET SEALING PLUGS. SEE 10-150000 (#27 & #28).

SOLDER WELL DATA			
CONTACT SIZE	20	16	
WELL DIA	.046 <sup>+004</sup> <sub>-000</sub>	.078 <sup>+004</sup> <sub>-002</sub>	
WELL DEPTH	.125 <sup>+031</sup> <sub>-000</sub>	.188	
ITEM NO.	QTY REQD	DESCRIPTION	PART NUMBER
PARTS LIST			
UNLESS OTHERWISE SPECIFIED		DRAWN: NICHOLS	DATE: 1-8-57
LINEAR DIMENSIONS ARE IN INCHES. TOLERANCES: 3 PLACES ± .010; 2 PLACES ± .03; 1 PLACE ± .1; ANGLES ± 2°. OTHER STANDARDS PER SCINTILLA SPEC 9-3800 AND MIL-STD 8.		CHECKED: Kovarick	DATE: 2-25-57
MATERIAL SPEC	PROCESS SPEC	MATERIAL:	STANDARDS: <i>Whit</i> <i>dim</i>
	TEST 9-3980-1	DRAFTING: <i>Vengaw</i>	ENGINEERING: <i>Whit</i>
	ASSY 9-3605-2	DEVELOPMENT:	
	9-2437-1		
	9-2811, 9-1564		
	FINISH SPEC.		
NEXT ASSEMBLY		SCINTILLA DIVISION	
		THE Bendix CORPORATION SIDNEY, NEW YORK, U.S.A.	
TITLE:		CONNECTOR, ELECTRICAL RECEPTACLE. TYPE PT-E()JFW OLIVE DRAB	
CODE IDENT NO.	SIZE	71-148706 THRU 71-148750	
77820	C		
SCALE NONE	WT SEE PARTS LIST	REF	SHEET 2 OF 2

71-148706/50

## X-ON Electronics

Largest Supplier of Electrical and Electronic Components

*Click to view similar products for [Circular MIL Spec Connector](#) category:*

*Click to view products by [Amphenol](#) manufacturer:*

Other Similar products are found below :

[89075GULPR](#) [0025-264-3014](#) [58-570121-04S](#) [58-584653-12P](#) [0134-213-1007](#) [0134-213-1208](#) [0134-213-2209](#) [0025-258-000](#) [60-042022-02P](#) [60-042022-19P](#) [60-042022-23P](#) [60-042217-10P](#) [60-042217-11P](#) [012-0467-000](#) [602GB06EG24-61SN](#) [0134-201-1207](#) [0134-207-2009](#) [0134-213-1006](#) [6104-207-2302](#) [6104-208-1902](#) [6131-202-19149P](#) [6131-204-21149P](#) [6131-207-13149P](#) [6131-208-13149P](#) [6131-209-17149P](#) [6131-210-11149P](#) [6131-211-19149P](#) [6131-216-19149P](#) [6131-220-25149P](#) [6131-259-11149P](#) [6131-259-21149P](#) [6131-259-23149P](#) [6131-263-19149P](#) [6131-265-17149P](#) [6131-265-19149P](#) [6134-203-21149](#) [CS3100A18-1P-472](#) [CS3100A-36-77S](#) [CS3101A36-79S-SR](#) [CS3102A-10SL-53P](#) [CS3102A10SL-64S](#) [CS3102A-18-1P116](#) [CS3102A-20-15S](#) [CS3102A-22-70S](#) [CS3102A-24-79S](#) [CS3102A24-AJS](#) [CS3102A-32-17P](#) [CS3102A32-25S](#) [CS3102A-36-78S](#) [CS3106A10SL3S004](#)