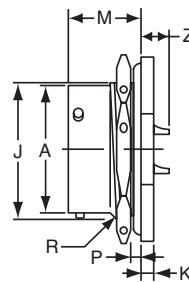
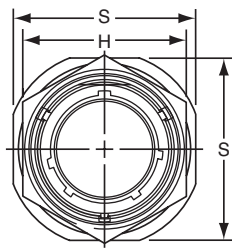


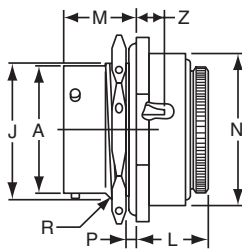
# PT07 (MS3114) SP07 jam nut receptacle



"A" General Duty/  
"C" Pressurized Receptacle  
PT07A-XX-XXX  
PT07C-XX-XXX

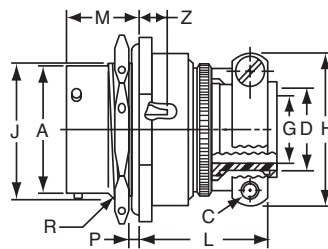
### TERMINATION ASSEMBLIES

"E" Open Wire Seal



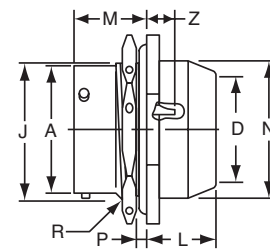
PT07E-XX-XXX  
SP07E-XX-XXX  
MS3114E-XX-XXX

"A" (SR), "E" (SR), "P" (SR), MS/"F" Strain Relief



PT07A-XX-XXX (SR)  
SP07A-XX-XXX (SR)  
PT07E-XX-XXX (SR)  
MS3114F-XX-XXX

"P" Potting Boot



PT07P-XX-XXX  
MS3114P-XX-XXX

To complete part number see how to order on page 25.

| Shell Size | Recept. Front View |       | Receptacle Side View     |                          |                     |      |                   |      |                              | Class "E", MS/"E" |           |      |           |            |
|------------|--------------------|-------|--------------------------|--------------------------|---------------------|------|-------------------|------|------------------------------|-------------------|-----------|------|-----------|------------|
|            | H<br>±.016         | S     | A Dia.<br>+.001<br>-.005 | J Flat<br>+.000<br>-.010 | K<br>+.011<br>-.010 | M    | P Panel Thickness |      | R<br>Thread<br>Class 2A UNEF | Z                 | L<br>Max. | M    | N<br>Max. | Z<br>±.040 |
| 6          | .625               | .812  | .348                     | .405                     | .125                | .696 | .062              | .125 | .4375-28                     | .231              | .568      | .696 | .604      | .191       |
| 8          | .750               | .938  | .473                     | .530                     | .125                | .696 | .062              | .125 | .5625-24                     | .231              | .568      | .696 | .729      | .191       |
| 10         | .875               | 1.062 | .590                     | .655                     | .125                | .696 | .062              | .125 | .6875-24                     | .231              | .568      | .696 | .854      | .191       |
| 12         | 1.062              | 1.250 | .750                     | .818                     | .125                | .696 | .062              | .125 | .8750-20                     | .231              | .568      | .696 | .979      | .191       |
| 14         | 1.188              | 1.375 | .875                     | .942                     | .125                | .696 | .062              | .125 | 1.0000-20                    | .231              | .568      | .696 | 1.104     | .191       |
| 16         | 1.312              | 1.500 | 1.000                    | 1.066                    | .125                | .696 | .062              | .125 | 1.1250-18                    | .231              | .568      | .696 | 1.229     | .191       |
| 18         | 1.438              | 1.625 | 1.125                    | 1.191                    | .125                | .696 | .062              | .125 | 1.2500-18                    | .231              | .568      | .696 | 1.354     | .191       |
| 20         | 1.562              | 1.812 | 1.250                    | 1.316                    | .156                | .884 | .062              | .250 | 1.3750-18                    | .261              | .630      | .884 | 1.510     | .221       |
| 22         | 1.688              | 1.938 | 1.375                    | 1.441                    | .156                | .884 | .062              | .250 | 1.5000-18                    | .261              | .630      | .884 | 1.635     | .221       |
| 24         | 1.816              | 2.062 | 1.500                    | 1.566                    | .156                | .917 | .062              | .250 | 1.6250-18                    | .228              | .660      | .917 | 1.760     | .188       |

| Shell Size | Class "A" (SR), "P" (SR), MS/"F" |           |      |       |       |      | Class "E" (SR) |           |      |       |       |      | Class "P", MS/"P" |                  |      |       |      |
|------------|----------------------------------|-----------|------|-------|-------|------|----------------|-----------|------|-------|-------|------|-------------------|------------------|------|-------|------|
|            | C<br>Thread                      | D<br>Max. | G    | H     | L     | M    | C<br>Thread    | D<br>Max. | G    | H     | L     | M    | D<br>Max.         | L +.010<br>-.026 | M    | N     | Z    |
| 6          | -                                | -         | -    | -     | -     | -    | -              | -         | -    | -     | -     | -    | .202              | .593             | .696 | .484  | .191 |
| 8          | 6-32                             | .250      | .125 | .781  | 1.062 | .696 | 6-32           | .250      | .125 | .775  | 1.029 | .696 | .327              | .593             | .696 | .608  | .191 |
| 10         | 6-32                             | .312      | .188 | .844  | 1.062 | .696 | 6-32           | .312      | .188 | .837  | 1.029 | .696 | .444              | .593             | .696 | .734  | .191 |
| 12         | 6-32                             | .438      | .312 | .969  | 1.062 | .696 | 6-32           | .438      | .312 | .963  | 1.029 | .696 | .558              | .593             | .696 | .858  | .191 |
| 14         | 6-32                             | .562      | .375 | 1.094 | 1.062 | .696 | 6-32           | .562      | .375 | 1.087 | 1.029 | .696 | .683              | .593             | .696 | .984  | .191 |
| 16         | 6-32                             | .625      | .500 | 1.156 | 1.188 | .696 | 6-32           | .625      | .500 | 1.150 | 1.161 | .696 | .808              | .593             | .696 | 1.110 | .191 |
| 18         | 8-32                             | .750      | .625 | 1.406 | 1.188 | .696 | 8-32           | .750      | .625 | 1.400 | 1.161 | .696 | .909              | .593             | .696 | 1.234 | .191 |
| 20         | 8-32                             | .750      | .625 | 1.406 | 1.250 | .884 | 8-32           | .750      | .625 | 1.400 | 1.224 | .884 | 1.034             | .718             | .884 | 1.360 | .221 |
| 22         | 8-32                             | .938      | .750 | 1.594 | 1.250 | .884 | 8-32           | .938      | .750 | 1.587 | 1.224 | .884 | 1.159             | .718             | .884 | 1.484 | .221 |
| 24*        | 8-32                             | 1.000     | .800 | 1.594 | 1.250 | .917 | 8-32           | 1.000     | .800 | 1.681 | 1.320 | .917 | 1.284             | .718             | .917 | 1.610 | .188 |

\* Size 24 strain relief available in PT only.

All dimensions for reference only.

## X-ON Electronics

Largest Supplier of Electrical and Electronic Components

*Click to view similar products for [Circular MIL Spec Connector](#) category:*

*Click to view products by [Amphenol](#) manufacturer:*

Other Similar products are found below :

[89075GULPR](#) [0025-264-3014](#) [58-570121-04S](#) [58-584653-12P](#) [0134-213-1007](#) [0134-213-1208](#) [0134-213-2209](#) [0025-258-000](#) [60-042022-02P](#) [60-042022-19P](#) [60-042022-23P](#) [012-0467-000](#) [602GB06EG24-61SN](#) [0134-201-1207](#) [0134-207-2009](#) [0134-213-1006](#) [6104-207-2302](#) [6104-208-1902](#) [6131-202-19149P](#) [6131-204-21149P](#) [6131-207-13149P](#) [6131-208-13149P](#) [6131-209-17149P](#) [6131-210-11149P](#) [6131-211-19149P](#) [6131-216-19149P](#) [6131-220-25149P](#) [6131-259-11149P](#) [6131-259-21149P](#) [6131-259-23149P](#) [6131-263-19149P](#) [6131-265-17149P](#) [6131-265-19149P](#) [6134-203-21149](#) [CS3100A18-1P-472](#) [CS3100A-36-77S](#) [CS3101A36-79S-SR](#) [CS3102A-10SL-53P](#) [CS3102A10SL-64S](#) [CS3102A-20-15S](#) [CS3102A-22-70S](#) [CS3102A-24-79S](#) [CS3102A24-AJS](#) [CS3102A-32-17P](#) [CS3102A32-25S](#) [CS3106A10SL3S004](#) [CS3106A-18-73S](#) [CS3106A-28-20P](#) [CS3106A-32-82S](#) [CS3106A36-79P-SR](#)