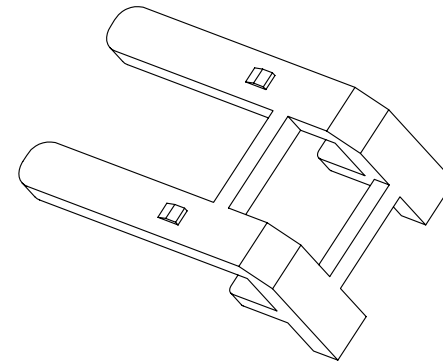
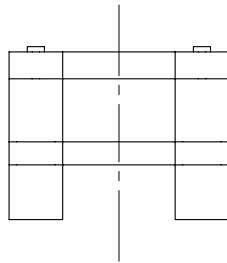
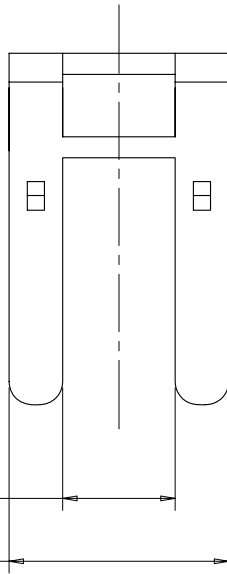
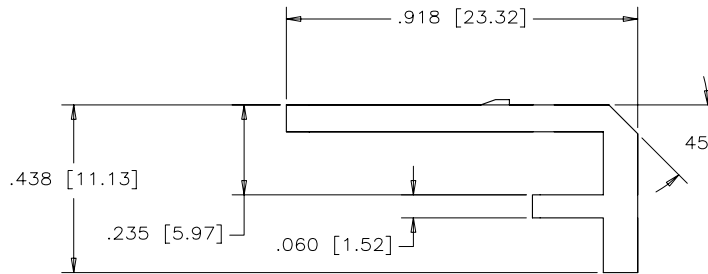


REVISIONS				
SYM	ZONE	ECN, ERN NO.	DATE	APPRD.
A		PROPOSAL	JAN 28/08	L.C.



**DATA CONTROL
RELEASE**
DEPT. NO. ---626---
DATE: JAN 29, 2008



MATERIALS: CLEAR POLYCARBONATE
FLAMMABILITY RATING UL 94V-0
COLOR: NATURAL

PART NUMBER: RJSSE-2485-01

MATERIAL -----	DRAWN	J.OU	DATE	JAN 28/08	Amphenol Canada Corp.		
	DESIGNED						
FINISH -----	CHECKED	MT.CHAN	DATE	JAN 28/08	TITLE RJSSE SERIES LIGHT PIPE -ROHS COMPLIANT		
	I. E. APPRD.	JEFF.S	DATE	JAN 28/08			
	Q. A. APPRD.	BORIS	DATE	JAN 28/08			
	DWG. APPRD.						
	ENG. REL. NO.				DWG	DRAWING NO.	REV.
	REF.				C	P-RJSSE-2485-01	A
	DIMENSIONS ARE IN	INCHES [mm]	CODE ID. NO.	03554	SCALE	3/1	WT. -----
							SHEET 1 OF 1

THIS DOCUMENT CONTAINS PROPRIETARY INFORMATION AND SUCH INFORMATION MAY NOT BE DISCLOSED TO OTHERS FOR ANY PURPOSE OR USED FOR MANUFACTURING PURPOSES WITHOUT WRITTEN PERMISSION FROM AMPHENOL CANADA CORP.

X-ON Electronics

Largest Supplier of Electrical and Electronic Components

Click to view similar products for [Modular Connectors](#) / [Ethernet Connectors](#) category:

Click to view products by [Amphenol](#) manufacturer:

Other Similar products are found below :

[8949-H88/06BLKA/SN](#) [74441-0010/BKN](#) [MP1010RX-1000](#) [MP44RX-1000](#) [PHJ-4P4C-1-V-4](#) [PHP-6P6C-5](#) [GAX-3-66](#) [GAX-8-62](#) [GDCX-PA-66-50](#) [GDCX-PN-64](#) [GDCX-PN-66](#) [GDCX-PN-66-50](#) [GDLX-A-66](#) [GDLX-N-66](#) [GDLX-S-66](#) [GDLX-S-88K](#) [GDTX-S-88-50](#) [GDX-PA-1010](#) [GLX-N-1010M-BLK](#) [GLX-S-88M-BLK](#) [GMX-N-1010](#) [GMX-S-1010](#) [GMX-S-66](#) [GMX-SMT4-N-88](#) [GPX-2-64](#) [GSGX-N-2-88](#) [GSGX-N-4-88](#) [GSX-NS2-88-3.05](#) [GSX-NS2-88-3.05-50](#) [GSX-NS-88-3.68](#) [PT-108A-8C-UL](#) [PT-J951-8C](#) [PTS-J531-8CS-50UL](#) [1-1775629-2](#) [A-2014-0-4](#) [GWLX-S-88-GR](#) [GWLX-S9-88-YG](#) [DC-1021-8-WH-6](#) [1300530003](#) [1324640-4](#) [RJ11FTVC2G](#) [RJ11FTVC2N](#) [RJFTVX2SA1G](#) [132764-001](#) [1413235](#) [MP88X-1000](#) [MPS88RX-5000](#) [MRJR-5481-0F2](#) [E5288-S000K3-L](#) [E5908-15A242-L](#)