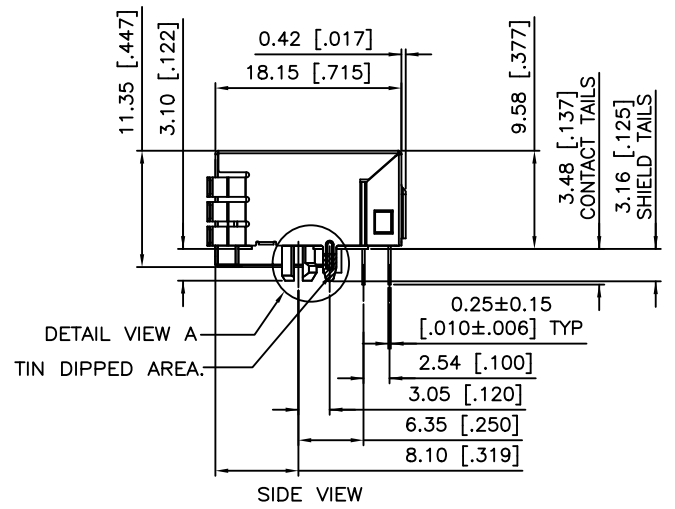
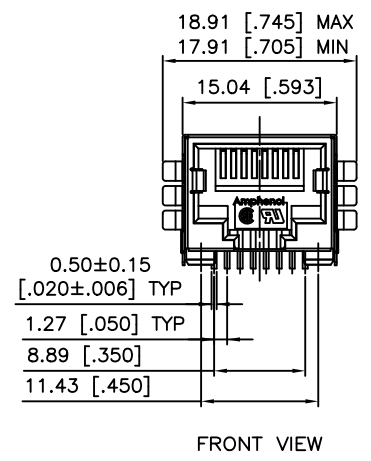
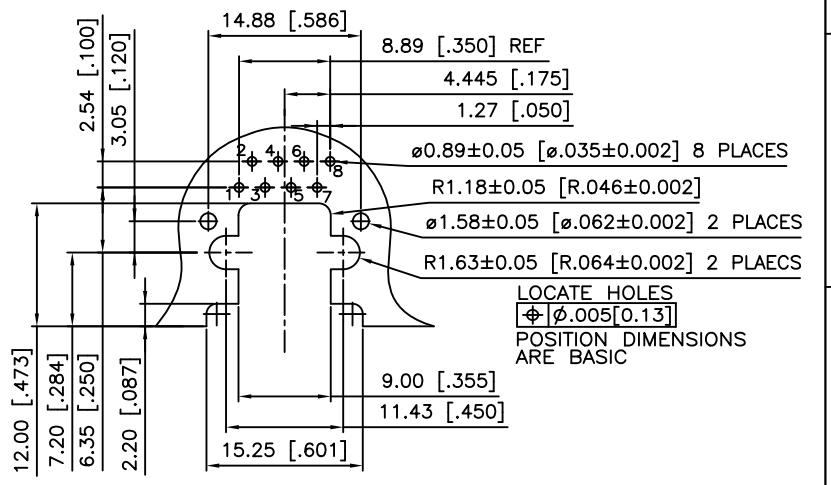


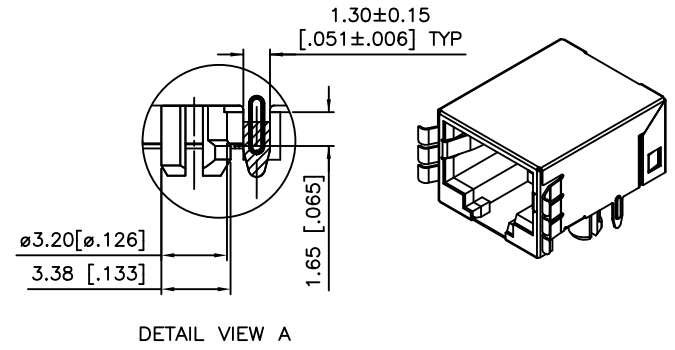
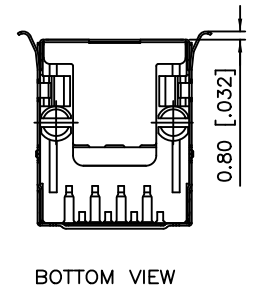
REVISIONS			
REV	DESCRIPTION, ECN, EAR NO.	DATE	APP'D
A	PROPOSAL PER ECN E07035	FEB 27/07	L.CHAN
J	PROPOSAL	JAN 30/08	L.CHAN
K	ADD TIN DIPPED ON SHIELD TAIL	SEP 20/12	L.CHAN
L	ADD PIN DIMENSIONS AND TOLERANCE	FEB 15/17	L.CHAN



DETAIL VIEW A
TIN DIPPED AREA.



LOCATE HOLES
 ϕ .005 [.013]
 POSITION DIMENSIONS ARE BASIC

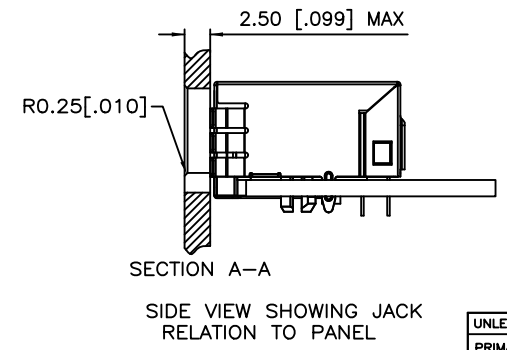
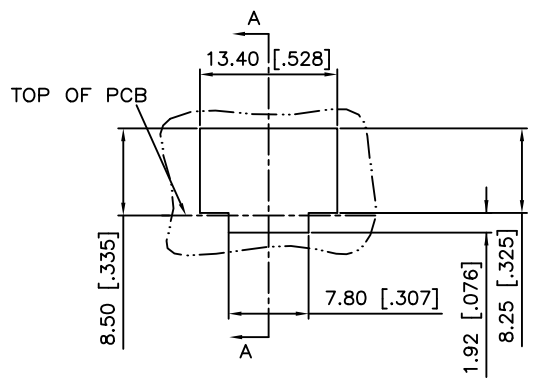


RECOMMENDED P.C.B. LAYOUT

AMPHENOL PART NUMBER: RJULE-4X182-01

CONTACT PLATING CODE
 0 = GOLD FLASH
 1 = 15u"
 2 = 30u"
 3 = 50u"

NOTES:
 MATERIALS:
 HOUSING: HIGH TEMPERATURE THERMOPLASTIC.
 FLAMMABILITY RATING UL 94V-0
 COLOUR: BLACK
 CONTACTS: PHOSPHOR BRONZE
 PLATING: GOLD PLATING ON MATING SURFACES.
 SEE PART NUMBER SYSTEM OPTION
 50 u" [1.27 MICRONS] MIN. NICKEL UNDERPLATE.
 100 u" [2.54 MICRONS] MIN. MATTE TIN ON
 SOLDER AREA.
 SHELL: BRASS
 NICKEL PLATING WITH TIN DIPPED ON PCB TAIL.



SIDE VIEW SHOWING JACK
RELATION TO PANEL

UNLESS SPECIFIED OTHERWISE	DRAWN	Jack Wang	DATE	FEB 27/07
PRIMARY UNITS MILLIMETER	CHECKED	MT.Chen	DATE	FEB 27/07
SECONDARY INCH	M.E. APP'D	YM Lee	DATE	FEB 27/07
REFERENCE IN PARENTHESES	Q.A. APP'D			
GENERAL TOLERANCES	DWG APPR.			
1 DECIMAL PLACE ±0.50	ENG. REL. NO.			
2 DECIMAL PLACES ±0.30	REF.			
3 DECIMAL PLACES ±0.25	THIRD ANGLE PROJECTION			
ANGULAR DEGREES ±1.0°	DO NOT SCALE DRAWING			

Amphenol Canada Corp.
www.amphenolcanada.com
 TITLE RJ ULTRA LOW PROFILE MODULAR JACK
 8 POSITIONS, 8 CONTACTS, SHIELD
 WITH REAR PANEL MOUNT TABS.
 WITHOUT FLANGE-ROHS COMPLIANT
 DWG. NO. P- RJULE-4X182-01
 CODE ID NO. 03554 DWG SIZE: C SCALE: N/A SHEET 1 OF 1

X-ON Electronics

Largest Supplier of Electrical and Electronic Components

Click to view similar products for [Modular Connectors](#) / [Ethernet Connectors](#) category:

Click to view products by [Amphenol](#) manufacturer:

Other Similar products are found below :

[8949-H88/06BLKA/SN](#) [74441-0010/BKN](#) [MP1010RX-1000](#) [MP44RX-1000](#) [PHJ-4P4C-1-V-4](#) [PHP-6P6C-5](#) [GAX-3-66](#) [GAX-8-62](#) [GDCX-PA-66-50](#) [GDCX-PN-64](#) [GDCX-PN-66](#) [GDCX-PN-66-50](#) [GDLX-A-66](#) [GDLX-N-66](#) [GDLX-S-66](#) [GDLX-S-88K](#) [GDTX-S-88-50](#) [GDX-PA-1010](#) [GLX-N-1010M-BLK](#) [GLX-S-88M-BLK](#) [GMX-N-1010](#) [GMX-S-1010](#) [GMX-S-66](#) [GMX-SMT4-N-88](#) [GPX-2-64](#) [GSGX-N-2-88](#) [GSGX-N-4-88](#) [GSX-NS2-88-3.05-50](#) [PT-108A-8C-UL](#) [PT-J951-8C](#) [PTS-J531-8CS-50UL](#) [1-1775629-2](#) [A-2014-0-4](#) [GWLX-S-88-GR](#) [GWLX-S9-88-YG](#) [DC-1021-8-WH-6](#) [1300530003](#) [1324640-4](#) [RJ11FTVC2G](#) [RJ11FTVC2N](#) [RJFTVX2SA1G](#) [132764-001](#) [1413235](#) [MP88X-1000](#) [MPS88RX-5000](#) [MRJR-5481-0F2](#) [E5288-S000K3-L](#) [E5908-15A242-L](#) [155302-001](#) [AX100653](#)