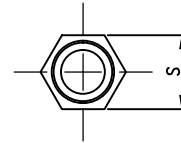
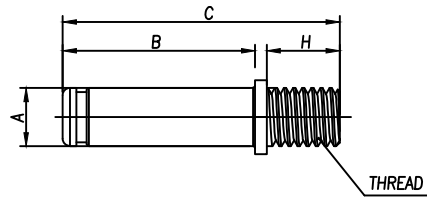
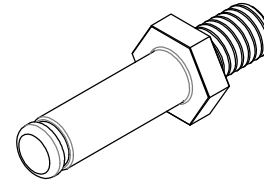
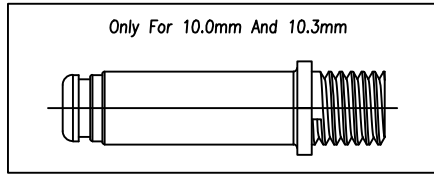


# CUSTOMER DRAWING

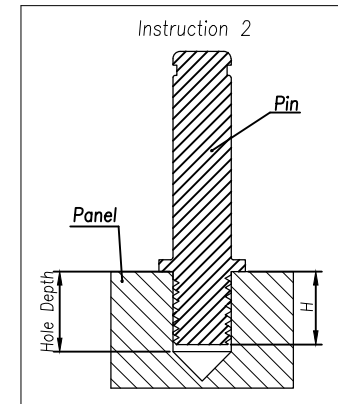
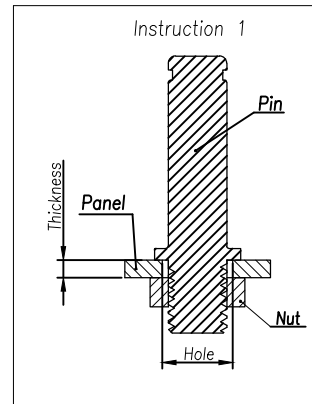
REVISIONS				
REV	DESCRIPTION	DATE	BY	APPR
A	INITIAL RELEASE	01/04/14	DH	EC
B	CHANGE THE STRUCTURE OF PIN	01/26/14	DH	EC
C	CHANGE THE STRUCTURE OF PIN	02/06/14	DH	EC
D	ADD TORQUE FORCE	03/19/14	DH	EC
E	ADD RadLok Pin 14.0	04/01/15	VF	EC



Ordering Example:

RadLok \_\_\_\_\_ RL 9 080 - 101  
 RadLok Pin \_\_\_\_\_  
 RadLok Size:  $\varnothing$ 8.0mm \_\_\_\_\_  
 Surface Finish: Silver \_\_\_\_\_

Note:  
Material: Copper Alloy.



### Specification

Pin Size (mm)	A (mm)	B (mm)	C (mm)	H (mm)	S (mm)	Thickness (mm)	Thread	Torque Force (N.m)	Current(A)	Ordering Number (XXX-For Plating)	Plating		
3.6	3.6	17.5	28.0	8	7.0	1.0~2.5	M4 X 0.7 - 6g	2.5±0.2	70	RL9036-XXX	101	Silver	
											102	Tin	
											103	Nickel	
5.7	5.7	21.1	34.1	10	10.0	1.0~2.5	M6 X 1.0 - 6g	4.0±0.4	120	RL9057-XXX			
8.0	8.0	26.4	42.4	12	13.0	1.0~3.5	M8 X 1.25 - 6g	7.5±0.5	200	RL9080-XXX			
10.0	10.0	32.2	53.2	16	16.0	1.0~4.0	M10 X 1.5 - 6g	20±1	300	RL9100-XXX			
12.0	12.0	32.6	58.6	20	18.0	1.0~4.5	M12 X 1.75 -6g	24±1	400	RL9120-XXX			
14.0	14.0	41.0	72.0	23	24.0	1.0~4.5	M12 X 1.75 -6g	24±1	500	RL9140-XXX			



Amphenol Technical Products International GZ

第三角投影 THIRD ANGLE PROJECTION	页面 SHEET	幅面 SIZE	版次 REV.	比例 SCALE.	PART NAME:  RadLok Pin
1 OF 2	A3	E			DWG NO:  See Table
签名 SIGNATURE	日期 DATE	UNLESS OTHERWISE SPECIFIED 1) All dimensions are in metric(mm). 2) Tolerances are as follows: 0 PL DEC ±1.00 1 PL DEC ±0.50 2 PL DEC ±0.20			CUST PART #:  N/A
制图 DRAWN	DH	02/06/2014	Angles ±1°		CUST REV.  E
审核 CHECKED	GX	02/06/2014			
批准 APPROVAL	EC	02/06/2014			


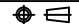
THIS DRAWING IS SUPPLIED FOR INFORMATION ONLY. DESIGN FEATURES, SPECIFICATIONS AND PERFORMANCE DATA SHOWN HEREON ARE THE PROPERTY OF THE AMPHENOL CORPORATION. NO RIGHTS OF REPRODUCTION ARE IMPLIED. ALL DIMENSIONS ARE SUBJECT TO NORMAL MANUFACTURING VARIATIONS.

CUSTOMER DRAWING

REVISIONS				
REV	DESCRIPTION	DATE	BY	APPR
A	INITIAL RELEASE	01/04/14	DH	EC
B	CHANGE THE STRUCTURE OF PIN	01/26/14	DH	EC
C	CHANGE THE STRUCTURE OF PIN	02/06/14	DH	EC
D	ADD TORQUE FORCE	03/19/14	DH	EC
E	ADD RadLok Pin 14.0	04/01/15	VF	EC

Table			
Plating Type	Size	Description	FG P/N
Silver	3.6mm	RL Pin RL9036-101	AC-CP000102
	5.7mm	RL Pin RL9057-101	AC-CP000104
	8.0mm	RL Pin RL9080-101	AC-CP000105
	10.0mm	RL Pin RL9100-101	AC-CP000107
	12.0mm	RL Pin RL9120-101	AC-CP000110
Tin	14.0mm	RL Pin RL9140-101	AC-CP000111
	3.6mm	RL Pin RL9036-102	AC-CP000178
	5.7mm	RL Pin RL9057-102	AC-CP000180
	8.0mm	RL Pin RL9080-102	AC-CP000181
	10.0mm	RL Pin RL9100-102	AC-CP000183
Nickel	12.0mm	RL Pin RL9120-102	AC-CP000186
	14.0mm	RL Pin RL9140-102	AC-CP000187
	3.6mm	RL Pin RL9036-103	AC-CP000151
	5.7mm	RL Pin RL9057-103	AC-CP000153
	8.0mm	RL Pin RL9080-103	AC-CP000154
	10.0mm	RL Pin RL9100-103	AC-CP000156
12.0mm	RL Pin RL9120-103	AC-CP000159	
14.0mm	RL Pin RL9140-103	AC-CP000160	

THIS DRAWING IS SUPPLIED FOR INFORMATION ONLY. DESIGN FEATURES, SPECIFICATIONS AND PERFORMANCE DATA SHOWN HEREON ARE THE PROPERTY OF THE AMPHENOL CORPORATION. NO RIGHTS OF REPRODUCTION ARE IMPLIED. ALL DIMENSIONS ARE SUBJECT TO NORMAL MANUFACTURING VARIATIONS.

	Amphenol Technical Products International GZ				PART NAME:	RadLok Pin
	第三角投影 THIRD ANGLE PROJECTION 	页面 SHEET 2 OF 2	幅面 SIZE A3	版次 REV. E	比例 SCALE	DWG NO:
签名 SIGNATURE 日期 DATE 制图 DRAWN DH 02/06/2014 审核 CHECKED GX 02/06/2014 批准 APPROVAL EC 02/06/2014	UNLESS OTHERWISE SPECIFIED 1) All dimensions are in metric(mm). 2) Tolerances are as follows: 0 PL DEC ±1.00 1 PL DEC ±0.50 2 PL DEC ±0.20 Angles ±1°			CUST PART #: N/A		CUST REV. E

## X-ON Electronics

Largest Supplier of Electrical and Electronic Components

*Click to view similar products for [Heavy Duty Power Connectors](#) category:*

*Click to view products by [Amphenol](#) manufacturer:*

Other Similar products are found below :

[647757-1](#) [6643411-1](#) [6646058-2](#) [6646137-1](#) [6646138-1](#) [6646479-1](#) [6646608-1](#) [6646786-1](#) [6646940-1](#) [6651091-1](#) [6651525-1](#) [6651529-1](#)  
[6651788-1](#) [696475-1](#) [73000005059](#) [73000005642](#) [765-15-0080A](#) [765-16-0080B](#) [829992-1](#) [902-77-02113](#) [129-1J](#) [AN0024023](#) [E6374G1](#)  
[e6389g2](#) [157-43GW8](#) [MS3117-14AC](#) [1643543-1](#) [1650540-1](#) [1651811-2](#) [1766260-1](#) [1766282-1](#) [1766966-1](#) [1791340000](#) [NLDFT-3-BL-L-](#)  
[S120-M40A](#) [NLDFT-N-W-L-C240-M40B](#) [NLS-2-R-C240-M40B](#) [NLS-N-W-C240-M40B](#) [NPS-3-BL-T6](#) [1986615-1](#) [2-1589900-8](#) [2199314-1](#)  
[KA8102](#) [9300480317](#) [SBS50BRN#6](#) [29131](#) [29652](#) [1646905-1](#) [1648320-1](#) [1648582-1](#) [1650195-2](#)