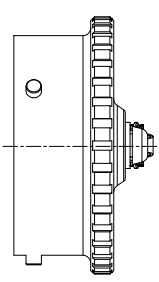
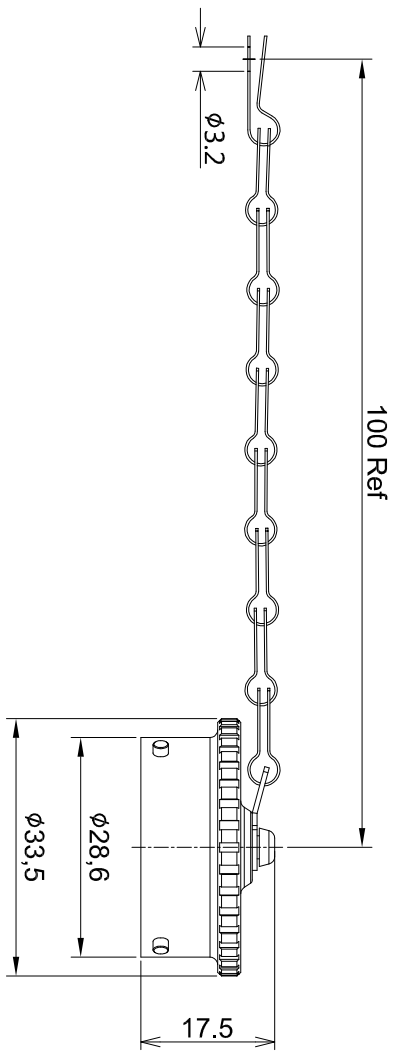


REVISIONS					
REV	ECO	DESCRIPTION	DATE	BY	APPR
A1	-	RELEASED DRAWING	Nov-21-2016	Ben	Tommy



- NOTES : (UNLESS OTHERWISE SPECIFIED)
- MATERIAL :  
DUST CAP : AL ALLOY , NICKEL PLATED.  
CHAIN : STAINLESS STEEL.  
LOCATING RIVET : STAINLESS STEEL.  
RIVET : COPPER ALLOY,NICKEL PLATING  
GASKET : EPDM.
  - SPECIFICATIONS :  
2.1 OPERATING TEMPERATURE : -40°C ~ +105°C.  
2.2 IP--CLASS : IP67.  
2.3 MATING CYCLES DURABILITY : 500 CYCLES MIN.  
2.4 RoHS COMPLIANT.
  - ALL DIMENSIONS ARE FOR REFERENCE USE ONLY.

RT618DC X X  
① ②

P/N	①	②	CHAIN	PLATING
RT618DC	---	---	NO CHAIN	NICKEL PLTING
RT618DCA	---	A	NO CHAIN	BLACK ANODIZING
RT618DCG	G	---	CHAIN	NICKEL PLTING
RT618DCGA	G	A	CHAIN	BLACK ANODIZING

QUANTITY	PART NUMBER	DESCRIPTION	ITEM
<b>MATERIALS LIST</b>			

UNLESS OTHERWISE SPECIFIED	SIGNATURES	DATE	Amphenol			
1) All dimensions are in metric(mm). 2) Tolerances are as follows: 1 PL DEC 0.30 Fractions 1/64 2 PL DEC 0.10 Fractions 1/16 3 PL DEC 0.08 Fractions 1/16	DRAWN: Ben	Nov-21-2016	Sine Systems - www.amphenol-sine.com 44724 Worthy Drive Clinton Township, MI 48036			
3) Note reference =	CHECKED:					
	ENGINEER:					
MATERIAL SPECIFICATIONS:	APPROVAL:		ECO-MATE,DUSTCAP FOR PLUG,SIZE 18			
PROCESS SPECIFICATIONS:	CUSTOMER:		THIS DRAWING IS SUPPLIED FOR YOUR INFORMATION ONLY. IT IS NOT TO BE USED FOR REPRODUCTION OR REPRODUCTION OF ANY KIND WITHOUT THE WRITTEN PERMISSION OF AMPHENOL. ALL DIMENSIONS ARE SUBJECT TO NORMAL MANUFACTURING VARIATIONS.			
NEXT ASSY:			SIZE: B	TYPE: C-	DWG NO: RT618DCxx	REVISION: A1
			SCALE: NONE		SHEET 1	OF 1

## X-ON Electronics

Largest Supplier of Electrical and Electronic Components

*Click to view similar products for [Standard Circular Connector](#) category:*

*Click to view products by [Amphenol](#) manufacturer:*

Other Similar products are found below :

[5M2530B10P](#) [600259N006](#) [600273N007](#) [6134-336-13149](#) [6134-337-11149](#) [6134-337-2390](#) [6134-341-17149](#) [6280-4SG-516](#) [6280-7SG-3DC](#)  
[6290](#) [6291A](#) [66200A-10](#) [680-SMG](#) [681-PMG](#) [CXS3102A14S2P](#) [CXS3102A181S](#) [7251-6SG-300](#) [7271-6SG-300](#) [7282-3PG-300-CH3](#) [75-](#)  
[474014-05S](#) [75-474618-01S](#) [75-474618-04P](#) [75-474618-04S](#) [799539-000](#) [MI8-SE](#) [805-005-07NF11-19PC](#) [805-005-07NF15-7PA](#) [8280-4PG-](#)  
[516](#) [8280-7PG-519](#) [8282-5PG-519](#) [836783-1](#) [MP-4102-25P-C](#) [862256-1](#) [864019-2](#) [866857-1](#) [867865-1](#) [PT01SP-14-18P](#) [PT08P-14-5S](#)  
[PTSF06SE-14-12S](#) [120-1833-000](#) [QCM019PC2DC012B](#) [1-2069279-1](#) [121583-0217](#) [121667-0020](#) [129591AU](#) [1000B BULK](#) [RD10A16-19-](#)  
[P6CS051/1](#) [RD10A20-31-P8CS051/1](#) [RD16A14-12-S6CS051/2](#) [1301240290](#) [1301240347](#)