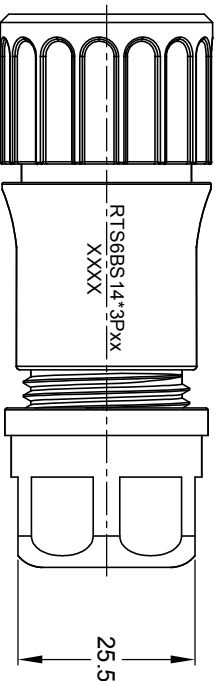
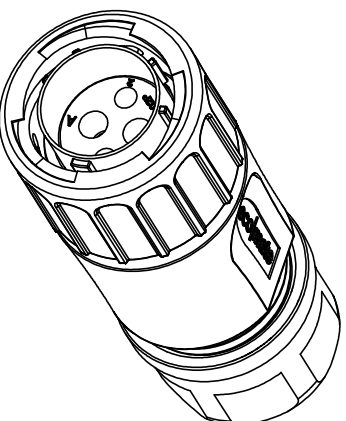
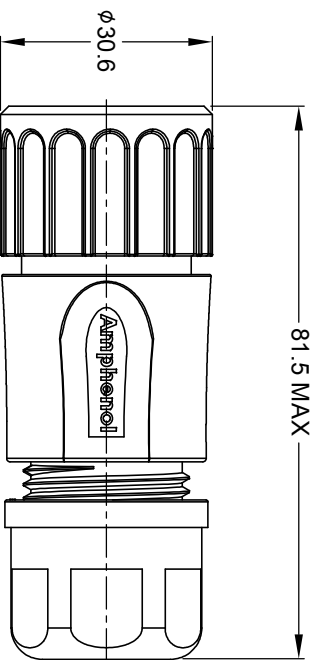
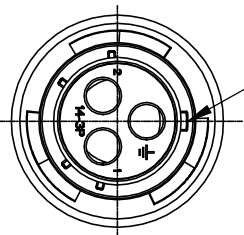
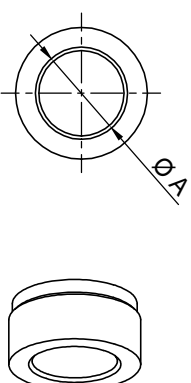


MASTER KEYWAY



DIMENSION ØA	CABLE OD RANGE
12.3MM	6.0-12.0MM
14.3MM	9.0-14.0MM



KEY	PART NUMBER
-40°C ~ +105°C	RTS6BS14N3P03
-40°C ~ +125°C	RTS6BS14N3P03

NOTES : (UNLESS OTHERWISE SPECIFIED)

- MATERIAL :
SHELL : THERMOPLASTIC , UL94 V-0.
INSERT : THERMOPLASTIC , UL94 V-0.
COUPLING NUT : THERMOPLASTIC , UL94 V-0.
O-RING : NBR OR SILICONE RUBBER.
WASHER : SILICONE RUBBER.
BACK SHELL : THERMOPLASTIC , UL94 V-0.
CLAMP NUT : THERMOPLASTIC , UL94 V-0.
CLAMP RING : THERMOPLASTIC , UL94 V-0.
CABLE SEAL : EPDM.
- SPECIFICATIONS :
2.1 RATED CURRENT : 45A (MAX).
2.2 RATED VOLTAGE : 600V(AC/DC).
2.3 OPERATING TEMPERATURE : SEE TABLE.
2.4 DIELECTRIC WITHSTANDING VOLTAGE : LESS THAN 2 MILLIAMPS CURRENT LEAKAGE@2500 VOLTS AC.
2.5 INSULATION RESISTANCE : 5000 MEGOHMS MIN.
2.6 IP CLASS : IP67 AND IP69K IN THE MATED CONDITION,
WIRE SEALS FULLY POPULATED.
2.7 MATING CYCLES DURABILITY : 500 CYCLES MIN.
2.8 RoHS COMPLIANT.
- SUITABLE CONTACTS : #8 CONTACT.

CONTACT SIZE	CONTACT PN	WIRE RANGE
A4	MP10A23X-25	16 - 14AWG
	MP10A23X-63	12 - 10AWG
	MP10A23X-10	8 AWG

IN THE CONTACT PN, "X" DENOTE DIFFERENT PLATING.
ALL DIMENSIONS ARE FOR REFERENCE USE ONLY.

REVISIONS					
REV	ECO	DESCRIPTION	DATE	BY	APPR
A1	-	RELEASED DRAWING	Nov-10-17	Nick	TOMMY
A2	-	UPDATE CABLE OD RANGE	Feb-07-2018	Nick	TOMMY
A3	-	UPDATE DRAWING	Mar-26-2018	White	Tommy
A4	-	UPDATE NOTES	Oct-18-2018	Blink	Tommy

QUANTITY	PART NUMBER	DESCRIPTION	ITEM																		
<table border="1"> <thead> <tr> <th colspan="2">SIGNATURES</th> <th>DATE</th> </tr> </thead> <tbody> <tr> <td>DRAWN</td> <td>Bink</td> <td>04-16-2018</td> </tr> <tr> <td>CHECKED</td> <td>Tid</td> <td>04-16-2018</td> </tr> <tr> <td>ENGINEER</td> <td></td> <td></td> </tr> <tr> <td>APPROVAL</td> <td>Tommy</td> <td>04-16-2018</td> </tr> <tr> <td>CUSTOMER</td> <td></td> <td></td> </tr> </tbody> </table>				SIGNATURES		DATE	DRAWN	Bink	04-16-2018	CHECKED	Tid	04-16-2018	ENGINEER			APPROVAL	Tommy	04-16-2018	CUSTOMER		
SIGNATURES		DATE																			
DRAWN	Bink	04-16-2018																			
CHECKED	Tid	04-16-2018																			
ENGINEER																					
APPROVAL	Tommy	04-16-2018																			
CUSTOMER																					
<table border="1"> <thead> <tr> <th>SIZE</th> <th>TYPE</th> <th>DWG NO.</th> <th>REVISION</th> </tr> </thead> <tbody> <tr> <td>B</td> <td>C</td> <td>RTS6BS14*3PXX</td> <td>A4</td> </tr> </tbody> </table>				SIZE	TYPE	DWG NO.	REVISION	B	C	RTS6BS14*3PXX	A4										
SIZE	TYPE	DWG NO.	REVISION																		
B	C	RTS6BS14*3PXX	A4																		
<p>Amphenol</p> <p>Sine Systems - www.amphenol-sine.com 44724 Midway Drive Clinton Township, MI 48036</p> <p>ECO-MATE PLUG, BACK SHELL, SIZE 14, 3POS, PIN</p>																					

X-ON Electronics

Largest Supplier of Electrical and Electronic Components

Click to view similar products for [Standard Circular Connector](#) category:

Click to view products by [Amphenol](#) manufacturer:

Other Similar products are found below :

[5M2530B10P](#) [600259N006](#) [600273N007](#) [6134-336-13149](#) [6134-337-11149](#) [6134-337-2390](#) [6134-341-17149](#) [6280-4SG-516](#) [6280-7SG-3DC](#)
[6290](#) [6291A](#) [66200A-10](#) [680-SMG](#) [681-PMG](#) [CXS3102A14S2P](#) [CXS3102A181S](#) [7251-6SG-300](#) [7271-6SG-300](#) [7282-3PG-300-CH3](#) [75-](#)
[474014-05S](#) [75-474618-01S](#) [75-474618-04P](#) [75-474618-04S](#) [799539-000](#) [MI8-SE](#) [805-005-07NF11-19PC](#) [805-005-07NF15-7PA](#) [8280-4PG-](#)
[516](#) [8280-7PG-519](#) [8282-5PG-519](#) [836783-1](#) [MP-4102-25P-C](#) [862256-1](#) [864019-2](#) [866857-1](#) [867865-1](#) [PT01SP-14-18P](#) [PT08P-14-5S](#)
[PTSF06SE-14-12S](#) [120-1833-000](#) [QCM019PC2DC012B](#) [1-2069279-1](#) [121583-0217](#) [121667-0020](#) [129591AU](#) [1000B BULK](#) [RD10A16-19-](#)
[P6CS051/1](#) [RD10A20-31-P8CS051/1](#) [RD16A14-12-S6CS051/2](#) [1301240290](#) [1301240347](#)