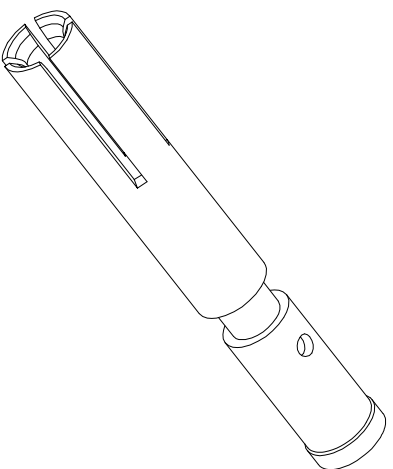
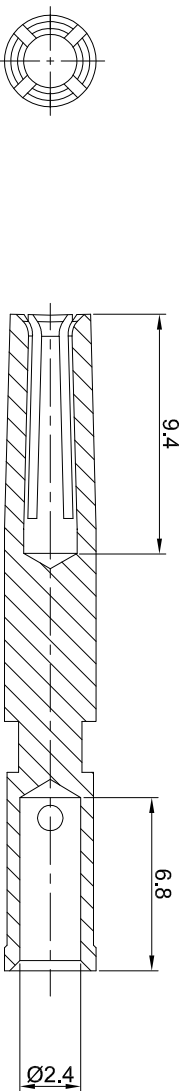
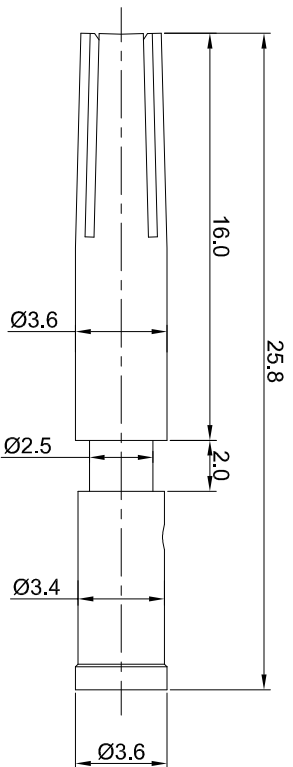


REVISIONS				
REV	ECO	DESCRIPTION	DATE	BY APPR
A1	-	RELEASED DRAWING	Jun.05.2018	White TOMMY



- NOTES: UNLESS OTHERWISE SPECIFIED
1. MATERIAL: COPPER ALLOY, GOLD PLATED
  2. SPECIFICATIONS:
    - 2.1 RATED CURRENT: 30 AMPS
    - 2.2 CONTACT RESISTANCE: <3 milliohm
    - 2.3 AVAILABLE WIRE RANGE: 14AWG~18AWG
    - 2.4 ROHS COMPLIANT
  3. ALL DIMENSIONS ARE FOR REFERENCE USE ONLY.

TITLE:

Socket contact 2.0mm Crimp 14~18AWG

DWG NO: SC000462

REV: A1

SH: 1

OF: 1

QUANTITY	SEE PART NUMBER CHART	PART NUMBER	DESCRIPTION	ITEM
1				

MATERIALS LIST

UNLESS OTHERWISE SPECIFIED	SIGNATURES	DATE
1) All dimensions are in millimeters. 2) Tolerances are as follows: 2 PL DEC 2015 ±.15 3 PL DEC 2015 ±.10 3) Note reference =	DRAWN: White CHECKED: Tod ENGINEER: APPROVAL: Tommy	JUN.05.2018 JUN.05.2018 JUN.05.2018

PROCESS SPECIFICATIONS:	CUSTOMER:	SIZE	TYPE	DWG NO:	REVISION
NEET ASSTY:	THIS DRAWING IS SUPPLIED FOR INFORMATION ONLY. DESIGN FEATURES, SPECIFICATIONS AND PERFORMANCE DATA ARE THE PROPERTY OF AMPHENOL CORPORATION. NO RIGHTS OR PERMISSIONS ARE GRANTED FOR REPRODUCTION OR TRANSMISSION IN ANY FORM OR BY ANY MEANS, ELECTRONIC OR MECHANICAL, INCLUDING PHOTOCOPYING, RECORDING, OR BY ANY INFORMATION STORAGE AND RETRIEVAL SYSTEMS. DIMENSIONS ARE SHOWN UNLESS OTHERWISE SPECIFIED.	B	C-	SC000462	A1

Socket contact 2.0mm Crimp 14~18AWG

Amphenol

Site Systems - www.amphenol-site.com  
44724 Morley Drive  
Clinton Township, MI 48036

SCALE: NONE

SHEET 1

OF 1

## X-ON Electronics

Largest Supplier of Electrical and Electronic Components

*Click to view similar products for [Circular Metric Connectors](#) category:*

*Click to view products by [Amphenol](#) manufacturer:*

Other Similar products are found below :

[600X518037X](#) [6STD15PCR99B70A](#) [8R4000A16M020](#) [8R5000A16M005](#) [1200910002](#) [1203580030](#) [1200910008](#) [1200910011](#) [1300140094](#)  
[130203-0054](#) [1300140026](#) [1300150099](#) [1-3637-600-5205](#) [1612618](#) [21036836414](#) [8R4006A16M010](#) [1R3006A20M005](#) [41-40011](#) [42-00006](#)  
[42-01015](#) [4-22279-4](#) [4-22281-1](#) [4-22284-9](#) [43-00113](#) [43-01203](#) [41-40013](#) [42-00008](#) [43-00343](#) [43-01026](#) [43-01162](#) [43-01173](#) [43-10000](#)  
[XS3P-M421-2](#) [600X518050X](#) [8R5006A16M020](#) [8R5006A16M005](#) [8R4000A16M010](#) [6-22279-3](#) [1605332](#) [N03FA03144](#) [1300140077](#) [43-](#)  
[16213](#) [43-01338](#) [XS2RD4265](#) [XS2R-D426-1](#) [XS8A-0441](#) [859RD04-103R004](#) [860RD04-113R004](#) [860RD04-213R004](#) [1-213245-2](#)