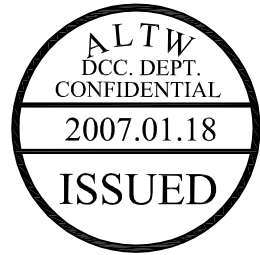
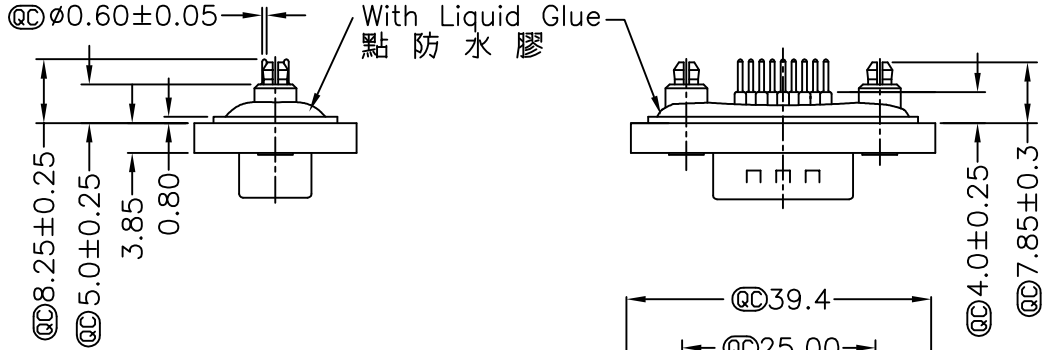


REV. A	ECN NO.	DATE 2006/03/01	SIGN DAVID	DESCRIPTION Released Rev.A
B	LE3-710071	2006/12/20	DongYaLi	Move 0-Ring To ZSE00100772

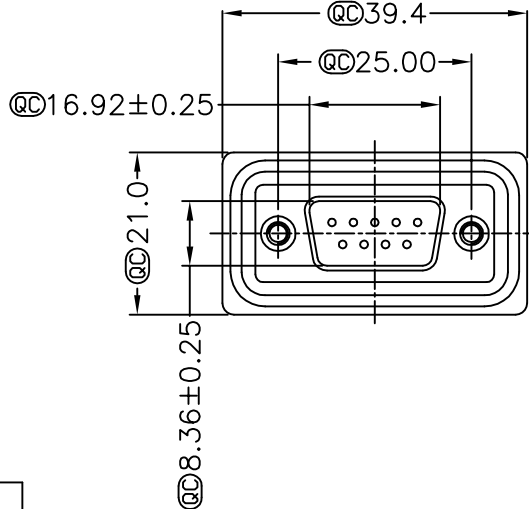
THIS DOCUMENT IS SUBJECT TO CHANGE WITHOUT NOTICE. IT IS CONFIDENTIAL AND A PROPERTY OF Amphenol LTW. DISCLOSE TO THIRD PARTY HAS TO BE AUTHORIZED BY Amphenol LTW.



Panel Thickness
面板厚度
X(Max.)

Screw L=5.0 For Panel Thickness Under 1.2mm
適用板厚為 1.2mm 以下

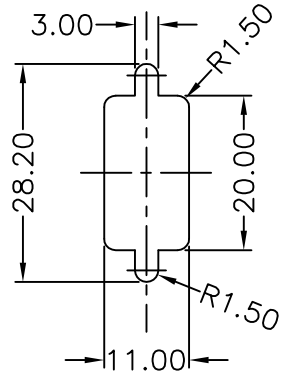
Screw L=6.0 For Panel Thickness Between 1.2~2.0mm
適用板厚為 1.2~2.0mm



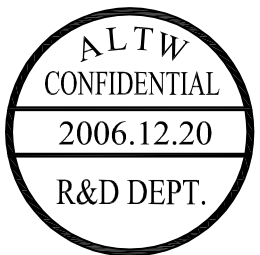
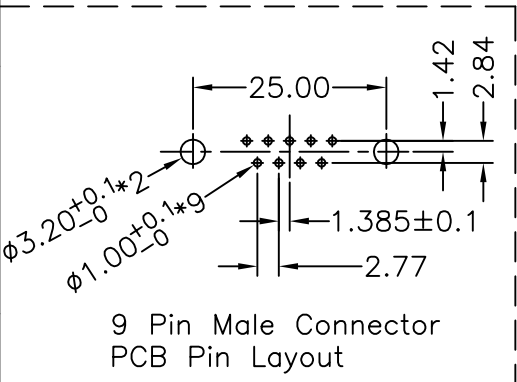
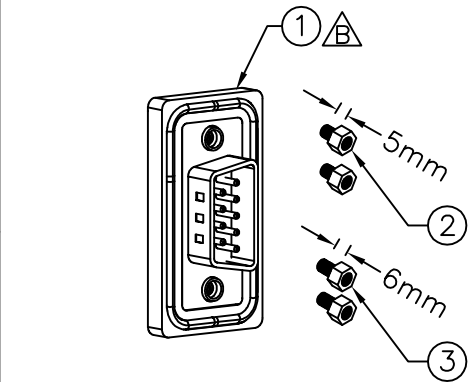
Note:

- * @C Important Dimension.
- * Waterproof Rate : IP68
IP68:1M of depth of water 24 hours
(防水等級 IP68)
(IP68:1米水深 24小時)
- * Do Mating Test After Glued
點膠後, 須作對插測試

- △* HD-SUB Conn. :Black Core , PBT
- △* Plastic Jacket : Black , Nylon+GF
- △* Pin : Copper Alloy , Gold Plated
- △* Ring : Light Blue,Silicone
- △* Screw : Copper Alloy,Nickel Plated,#4-40 UNC
- * The 180° Board Lock Needs To Connect The Iron Shell
180° 型支架需接鐵殼



Recommended Panel Cut-Out
建議挖孔尺寸



UNIT:mm	
TOLERANCE	
.X	±0.25
.XX	±0.1
.XXX	±0.05
ANGLES	±1°

TITLE D-SUB Connector 9Pin Male For Panel,PCB 180° Board Lock	
SCALE Free	SHEET 1 OF 1
REV. B	SIZE A4
@C :Inspection Item	

Amphenol LTW
安費諾亮泰企業股份有限公司

ITEM NO SDB-09PMMP-SA8001
DWG NO SDB-09PMMP-SA8001
CUSTOMER ALTW

DRAWN BY DongYaLi
CHECKED BY Simon
APPROVED BY Max

DATE 2006/12/20
DATE 2006/12/20
DATE 2006/12/20

X-ON Electronics

Largest Supplier of Electrical and Electronic Components

Click to view similar products for [D-Sub Standard Connectors](#) category:

Click to view products by [Amphenol](#) manufacturer:

Other Similar products are found below :

[56F706-005-LI](#) [56F711-015](#) [LV242999-142T12](#) [015-0341-000](#) [015-0372-005](#) [015-0372-008](#) [015-8755-001](#) [020419-0104](#) [012-0467-000](#)
[012-9507-034](#) [012-9507-114](#) [020745-0008](#) [609-25P](#) [CT2-18-11PCAU](#) [CT6-10SL-3SC](#) [CT6-10SL-4SC](#) [CT6-14S-2SC](#) [CT6E14SA7SC](#)
[CT6N10SL-4SSA34](#) [M83513/01-FC](#) [M83723/76W24619 L/C](#) [M85049/48-3-2F](#) [6STD09PCM99B70X](#) [6STD09SCM99B30X](#)
[6STD09SCT99S40X](#) [6STD15PCT99S40X](#) [6STD15SCT99S40X](#) [6STF09PCM05B70X](#) [7-135760-9](#) [MC11E-10-6SN](#) [747552-3](#) [MD1-21PS](#)
[MDM-15SCBRM7-F222](#) [MDM96517-699](#) [MDM96521-744](#) [MDVB1-21SL1](#) [MIK0-1-7SH003](#) [MIKQ6-7SH076](#) [MIKQ7-7PH077](#) [MIKQ7-](#)
[7PH11](#) [MIKQ7-7PH32](#) [MJSV-28SL61](#) [MKJ4A1F14-55S](#) [8-135760-3](#) [8STD09PCM99B30X](#) [PG-KV/PV-16-GROM-SEALING](#) [GDA15P](#)
[GDAY15PB](#) [980-0000-170](#) [980-0000-171](#)