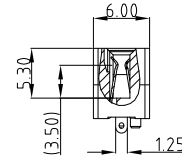
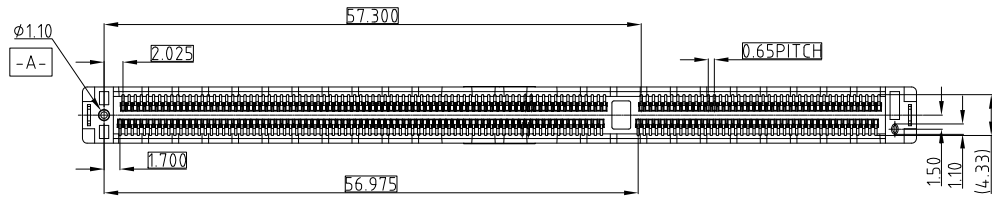
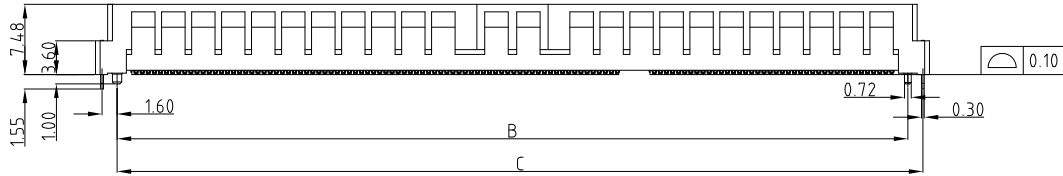
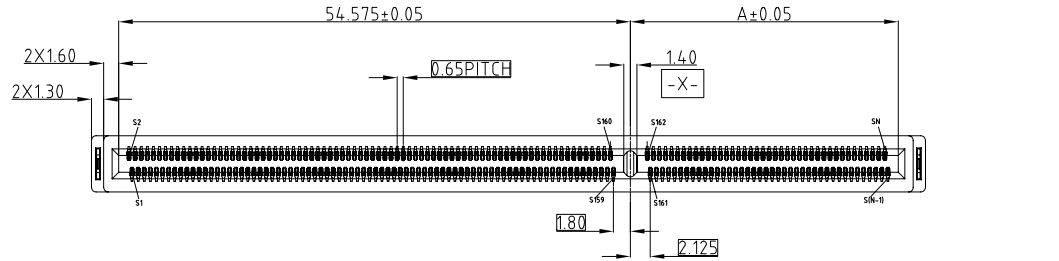


This document is the property of Amphenol Corporation and is delivered on the express condition that it is not to be disclosed, reproduced or used, in whole or in part, for manufacture or sale by anyone other than Amphenol Corporation without its prior consent, & that no right is granted to disclose or to use any information in this document.

CUSTOMER DRAWING

REVISIONS

SYM	ECN	DESCRIPTION	DATE	APPROVED
1	CDXXXX	FIRST DRAWING	Nov.16,2017	YH
2	CDXXXX	CORRECT DRAFT ERROR	Jan.08,2018	YH
3	CDXXXX	ADD CORE OUT	Aug.31,2018	YH
4	CDXXXX	ADD CORE OUT	Dec.03,2018	YH



PN SYSTEM
SE10XXX2611111X

1	0.76UM Au
2	0.38UM Au
3	GOLD FLASH
4	0.76UM PdNi-GF

PIN COUNT
220
240
260
280

- NOTE:
- MATERIAL:
HOUSING: HIGH TEMPERATURE THERMOPLASTIC BLACK UL94-V0
CONTACT: COPPER ALLOY
BOARDLOCK: COPPER ALLOY
PICK UP CAP: SUS
 - PLATING:
CONTACT: MATING AREA: SEE PLATING SPEC OVER 1.27-2.54 UM NICKEL UNDERPLATED
SOLDER AREA: 1.27UM MIN TIN OVER 1.27-2.54 UM NICKEL UNDERPLATED
BOARDLOCK: 1.27UM MIN TIN OVER 1.27-2.54UM NICKEL UNDERPLATED
 - ELECTRICAL PERFORMANCE:
RATED CURRENT FOR SIGNAL PIN: 0.5A/PIN
 - MATERIAL SHOULD BE FULFILLED AMPHENOL SPEC # SSN002
 - ORDERING PN: REFER TO THE PN SYSTEM



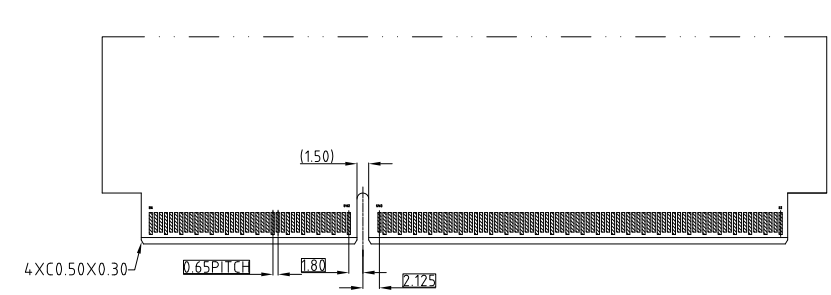
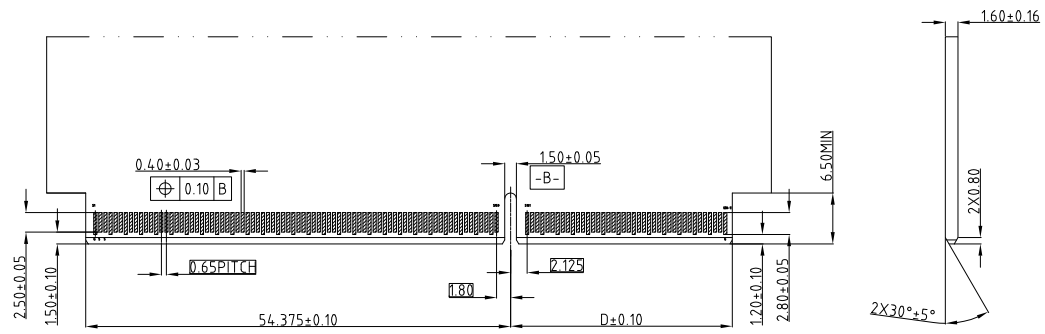
UNLESS OTHERWISE SPECIFIED TOLERANCES U.S. METRIC X +/- 0.25 .XX +/- 0.20 .XXX +/- 0.15 FRACTIONS +/- ANGLES +/- 5° FOR MATERIALS AND FINISHES SEE NOTES	APPROVAL	DATE
	DRAWN MATT	Dec.03,2018
	CHECKED	
	APPROVED	
REMOVE SHARP EDGES	DRAWING FILE : INTERNAL\DRAWING\CE\C SE10XXX2611111X	
DIMENSIONS	ANGLE OF PROJECTION	
U.S. INCHES		
(METRIC) (mm)		

Amphenol		
TITLE Slim Cool Edge Connector 0.65mm Pitch, Vertical		
SIZE A3C	DRAWING NO. SE10XXX2611111X	REV. 4
SCALE NONE	SHEET 1	OF 2

This document is the property of Amphenol Corporation and is delivered on the express condition that it is not to be disclosed, reproduced or used, in whole or in part, for manufacture or sale by anyone other than Amphenol Corporation without its prior consent, & that no right is granted to disclose or to use any information in this document.

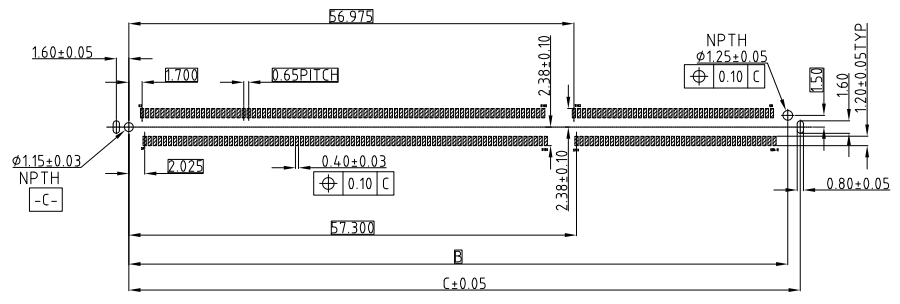
CUSTOMER DRAWING

REVISIONS				
SYM	ECN	DESCRIPTION	DATE	APPROVED
		SEE SHEET 1		



RECOMMEND LAYOUT FOR MATING CARD
GENERAL TOLERANCE ±0.05

N	A	B	C	D	E
220	22.075	77.850	79.450	21.875	41.22
240	28.575	84.350	85.950	28.375	44.47
260	35.075	90.850	92.450	34.875	47.72
280	41.575	97.350	98.950	41.375	50.97



RECOMMEND LAYOUT FOR SOLDER PCB
GENERAL TOLERANCE ±0.05



UNLESS OTHERWISE SPECIFIED TOLERANCES U.S. METRIC .X +/- 0.25 .XX +/- 0.20 .XXX +/- 0.15 FRACTIONS +/- ANGLES +/- 5° FOR MATERIALS AND FINISHES SEE NOTES	APPROVAL	DATE	Amphenol TITLE Slim Cool Edge Connector 0.65mm Pitch, Vertical
	DRAWN MATT	Dec.03,2018	
	CHECKED		
	APPROVED		
REMOVE SHARP EDGES	DRAWING FILE : INTERNAL\DRAWING\CE\C SE10XXX261111X		SIZE DRAWING NO.
DIMENSIONS	ANGLE OF PROJECTION		A3 C SE10XXX261111X
—U.S.— INCHES			REV. 4
(METRIC) (mm)			SCALE NONE SHEET 2 OF 2

X-ON Electronics

Largest Supplier of Electrical and Electronic Components

Click to view similar products for [Standard Card Edge Connectors](#) category:

Click to view products by [Amphenol](#) manufacturer:

Other Similar products are found below :

[CR7E-30DB-3.96E\(72\)](#) [6364499-1](#) [6565204-6](#) [PKC-156](#) [1437274-4](#) [147889-1](#) [1489165-4](#) [EBT15622B2X](#) [1-582587-1](#) [284-0102-12100](#)
[286-0052-12101A](#) [306022901000000](#) [307-012-502-202](#) [307-056-520-300](#) [2129318-1](#) [245-062-520-350](#) [287-0032-12101](#) [306-028-525-102](#)
[307-072-526-202](#) [345-060-559-303](#) [392-008-559-201](#) [534671-1](#) [341-240-317](#) [345-044-500-300](#) [346-240-318](#) [395-100-524-300](#) [09-07-2032](#)
[10035388-802LF](#) [10122859-009LF](#) [10127905-B04B24BLF](#) [530555-1](#) [5-678046-1](#) [73726-0005](#) [66308-1](#) [1-1437275-6](#) [PEC-07-02-T-S-A](#)
[346-014-520-801](#) [307-048-502-202](#) [CE100F22-9-C](#) [CE100F26-7-C](#) [CE100F28-3-D](#) [CE156F18-9-C](#) [CE156F22-5-D](#) [CE156F22-9-C](#)
[CT100F22-2-D](#) [CT100F22-3-D](#) [CT100F24-2-D](#) [CT100F24-3-D](#) [CT100F24-6-C](#) [CT156F22-4-D](#)