

B

A

### Configuration of Documents

P/N	Documents	No.	Title	CAT.No.	
SFW_S-2ST(M)E9LF	Specification Connector dwg.	SC-SFWS03	CAT.NO.TABLE FOR 1mm SPACING SMT CONNECTOR	SFW__S-2ST__LF	
		JSA96516	1mm SPACING SURFACE MOUNT FPC/FFC CONNECTOR	SFW__S-2ST__LF	
	Cable dwg.  Manual	JSA96517	1mm SPACING SURFACE MOUNT FPC/FFC CONNECTOR	SFW__S-2STM__LF	
		JSA96518	1mm SPACING SURFACE MOUNT FPC/FFC CONNECTOR	SFW__S-2ST_E9LF	
		JSA97526	CAT. NO. TABLE FOR PLASTIC TAPE PACKAGED 1mm SPACING SMT CONN.	SFW__S-2ST_E9LF	
		JSA97527	PLASTIC TAPE PACKAGED 1mm SPACING SMT CONNECTOR	SFW__S-2ST_E9LF	
		JSA93340	RECOMMENDED CABLE	SFW__S-2ST__LF	
		JSA93341	RECOMMENDED CABLE	SFW__S-2ST__LF	
		Specification Connector dwg.	SC-SFWS04	CAT. NO. TABLE FOR 1mm SPACING SMT CONNECTOR	SFW__S-6ST__LF
			JSA96521	1mm SPACING SURFACE MOUNT CIC CONNECTOR	SFW__S-6ST__LF
Cable dwg.  Manual	JSA96522	1mm SPACING SURFACE MOUNT CIC CONNECTOR	SFW__S-6STM__LF		
	JSA97528	CAT. NO. TABLE FOR PLASTIC TAPE PACKAGED 1mm SPACING SMT CONN.	SFW__S-6ST_E9LF		
	JSA97529	PLASTIC TAPE PACKAGED 1mm SPACING SMT CONNECTOR	SFW__S-6ST_E9LF		
	JSA93904	RECOMMENDED CABLE	SFW__S-6ST__LF		

mat'l. code		surface 58	tolerance	projection	product family	58SFF	CODE
lth	ecn no	ISO 1302	ISO 406		SFW_S Documents Configuration (1mm Spacing connector)	sheet 1 of 1	JP
A	J09-0202	dr	ISO 101				
		angles	linear	mm			
		dr	engr	scale			
		chr	appd				
					type	Product Customer Drawing	
sheet index	revision sheet	date					Rev.
	A	2009-5-25					A
	1						A

form: A4

1

2

1

2



FCIconnect.com

*	12	SFW12S-2ST___LF	18.4	13.24	11
	13	SFW13S-2ST___LF	19.4	14.24	12
	14	SFW14S-2ST___LF	20.4	15.24	13
	15	SFW15S-2ST___LF	21.4	16.24	14
	16	SFW16S-2ST___LF	22.4	17.24	15
	17	SFW17S-2ST___LF	23.4	18.24	16
*	18	SFW18S-2ST___LF	24.4	19.24	17
*	19	SFW19S-2ST___LF	25.4	20.24	18
	20	SFW20S-2ST___LF	26.4	21.24	19
*	21	SFW21S-2ST___LF	27.4	22.24	20
	22	SFW22S-2ST___LF	28.4	23.24	21
	23	SFW23S-2ST___LF	29.4	24.24	22
	24	SFW24S-2ST___LF	30.4	25.24	23
*	25	SFW25S-2ST___LF	31.4	26.24	24
	26	SFW26S-2ST___LF	32.4	27.24	25
*	27	SFW27S-2ST___LF	33.4	28.24	26
	28	SFW28S-2ST___LF	34.4	29.24	27
	29	SFW29S-2ST___LF	35.4	30.24	28
	30	SFW30S-2ST___LF	36.4	31.24	29
*	31	SFW31S-2ST___LF	37.4	32.24	30
*	32	SFW32S-2ST___LF	38.4	33.24	31

VARIATION \_\_\_\_\_  
 STM : FOR AUTOMATIC MOUNTING (SMT)  
 WITH MOUNTING PLATE  
 ST : FOR AUTOMATIC MOUNTING (SMT)  
 WITHOUT MOUNTING PLATE

PACKAGE STYLE \_\_\_\_\_

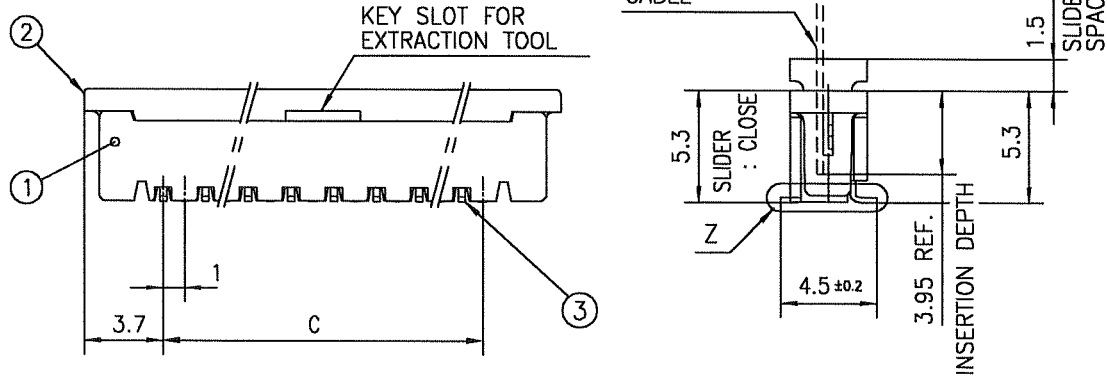
LEAD FREE \_\_\_\_\_

NOTES

1. THIS PRODUCT IS THE CONNECTOR, DESIGNED TO TERMINATE FPC/FFC AND COPE WITH AUTOMATIC MOUNTING (SMT).
2. SEE PART DRAWINGS FOR DIMENSIONS A.B.C.
3. PLEASE CONSULT US IN CASE OF USING PARTS WITH \* MARK

mat'l. code				surface <sup>58</sup> / tolerance ISO 1302 ✓ / ISO 406 / ISO 1101		projection 		product family 58SF		CODE JP	
ltr				tolerances unless otherwise specified		mm		title			
ecn no				angles		linear		CAT. NO. TABLE FOR 1mm SPACING SMT CONNECTOR (CAT.No.SFW__S-2ST__LF)			
dr				linear		scale $\times$		dwg no sheet 1 of 1 size			
date				engr		FCI		JSA 96516 A4			
date				chr				type Product Customer Drawing			
date				appd							
sheet index		revision D		sheet 1						Rev. D	

SC-SFWS 03 JSA96517 96518 96519 96520 93340 93341 form: A4



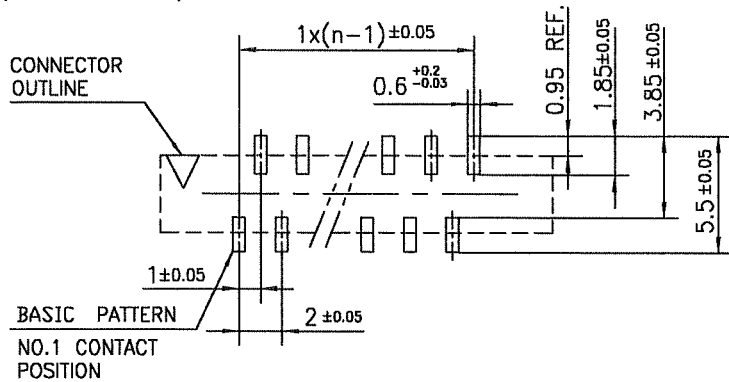
PT. NO.	PARTS NAME	MATERIAL	Q'TY	NOTE
1	HOUSING	GLASS FILLED THERMOPLASTIC RATED. (UL94V-0)	1	COLOR : BROWN
2	SLIDER		1	COLOR : BLACK
3	CONTACT	PHOSPHOR BRONZE	n	PLATING : TIN Ni UNDER PLATED(LEAD FREE)

n : NO. OF CONTACTS

NOTES

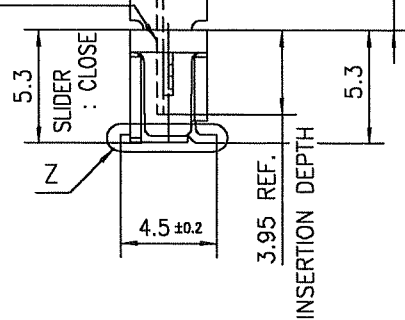
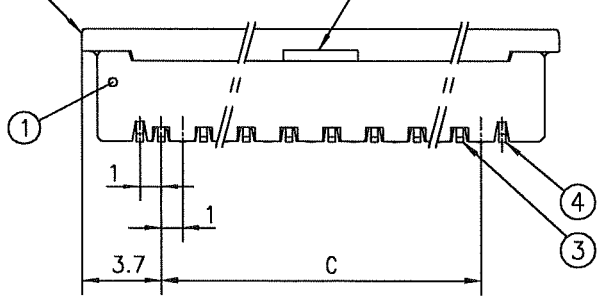
1. THIS PRODUCT IS THE CONNECTOR DESIGNED TO TERMINATE FPC/FFC AND COPE WITH AUTOMATIC MOUNTING (SMT).
2. FLATNESS OF CONTACT TERMINAL MUST BE WITHIN TOLERANCE IN Z PORTION DETAILED DRAWING.
3. THIS DIMENSION IS SPACE FOR THE NOZZLE OF MOUNTER.
4. THIS PRODUCT MEETS EUROPEAN UNION DIRECTIVES AND OTHER COUNTRY REGULATIONS AS DESCRIBED IN GS-22-008
5. THE HOUSING WILL WITHSTAND EXPOSURE TO 260°C PEAK TEMPERATURE FOR 10 SECONDS IN A REFLOW SOLDERING OVEN.

RECOMMENDED PC BOARD LAYOUT  
(COMPONENT SIDE)



mat'l. code				surface 58 / tolerance ISO 1302 / ISO 406 / ISO 1101		projection		product family 58SF		CODE JP	
ltr	ecn no	dr	date	tolerances unless otherwise specified		mm		title 1mm SPACING SURFACE MOUNT FPC/FFC CONNECTOR (CAT.No.SFW__S-2ST__LF)			
A	J05-0377	H.T	6/22/05	angles	linear	±0.2		dwg no sheet 1 of 1 size JSA 96517 A4			
B	J05-0731	H.T	10/28/05			scale X					
C	J06-0430	H.T	10/19/06	dr		10/19/06		type Product Customer Drawing			
				enrg		10/19/06					
				chr		10/19/06		sheet revision C			
				appd		10/20/06					

SC-SFWS 03 JSA96516  
form: A4



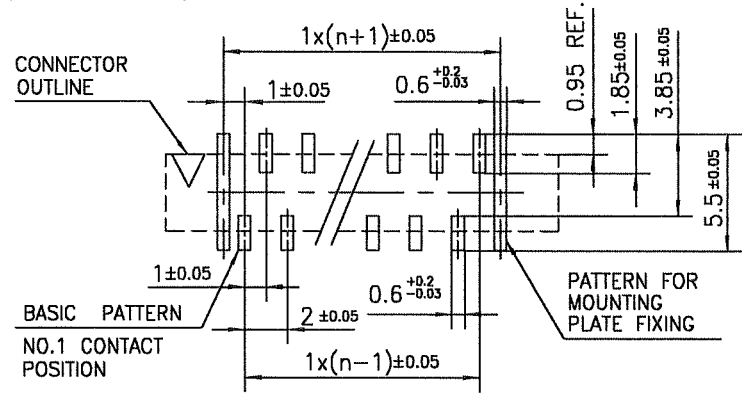
PT. NO.	PARTS NAME	MATERIAL	Q'TY	NOTE
1	HOUSING	GLASS FILLED THERMOPLASTIC RATED. (UL94V-0)	1	COLOR : BROWN
2	SLIDER		1	COLOR : BLACK
3	CONTACT	PHOSPHOR BRONZE	n	PLATING : TIN Ni UNDER PLATED(LEAD FREE)
4	MOUNTING PLATE	BRASS	2	

n : NO. OF CONTACTS

NOTES

1. THIS PRODUCT IS THE CONNECTOR DESIGNED TO TERMINATE FPC/FFC AND COPE WITH AUTOMATIC MOUNTING (SMT).
2. FLATNESS OF CONTACT TERMINAL AND MOUNTING PLATE MUST BE WITHIN TOLERANCE IN Z PORTION DETAILED DRAWING.
3. THIS DIMENSION IS SPACE FOR THE NOZZLE OF MOUNTER.
4. THIS PRODUCT MEETS EUROPEAN UNION DIRECTIVES AND OTHER COUNTRY REGULATIONS AS DESCRIBED IN GS-22-008
5. THE HOUSING WILL WITHSTAND EXPOSURE TO 260°C PEAK TEMPERATURE FOR 10 SECONDS IN A REFLOW SOLDERING OVEN.

RECOMMENDED PC BOARD LAYOUT (COMPONENT SIDE)



mat'l. code				surface 58 / tolerance ISO 1302 ✓ / ISO 406 / ISO 1101	projection	product family 58SF	CODE JP
ltr	ecn no	dr	date	tolerances unless otherwise specified	 mm  scale X	title	
A	J05-0377	H.T	6/22/05	angles linear		1mm SPACING SURFACE MOUNT FPC/FFC CONNECTOR (CAT.No.SFW__S-2STM__LF)	
B	J05-0731	H.T	10/28/05				
C	J06-0430	H.T	10/19/06			dwg no sheet 1 of 1 size	
				dr		JSA 96518 A4	
				enr		type Product Customer Drawing	
				chr			
				appd			
sheet index	revision sheet	C	1				Rev. c

SC-SFWS 03 JSA96516 form: A4

	11	SFW11S-2ST_E9LF	30.4	32	28.4
*	12	SFW12S-2ST_E9LF	38.4	32	28.4
	13	SFW13S-2ST_E9LF	38.4	32	28.4
	14	SFW14S-2ST_E9LF	38.4	32	28.4
	15	SFW15S-2ST_E9LF	38.4	32	28.4
	16	SFW16S-2ST_E9LF	50.4	44	40.4
	17	SFW17S-2ST_E9LF	50.4	44	40.4
*	18	SFW18S-2ST_E9LF	50.4	44	40.4
*	19	SFW19S-2ST_E9LF	50.4	44	40.4
	20	SFW20S-2ST_E9LF	50.4	44	40.4
*	21	SFW21S-2ST_E9LF	50.4	44	40.4
	22	SFW22S-2ST_E9LF	50.4	44	40.4
	23	SFW23S-2ST_E9LF	50.4	44	40.4
	24	SFW24S-2ST_E9LF	50.4	44	40.4
*	25	SFW25S-2ST_E9LF	50.4	44	40.4
	26	SFW26S-2ST_E9LF	50.4	44	40.4
*	27	SFW27S-2ST_E9LF	62.4	56	52.4
	28	SFW28S-2ST_E9LF	62.4	56	52.4
	29	SFW29S-2ST_E9LF	62.4	56	52.4
	30	SFW30S-2ST_E9LF	62.4	56	52.4
*	31	SFW31S-2ST_E9LF	62.4	56	52.4
*	32	SFW32S-2ST_E9LF	62.4	56	52.4

FOR FPC / FFC

VARIATION \_\_\_\_\_

STM:FOR AUTOMATIC MOUNTING (SMT)  
WITH MOUNTING PLATE

ST:FOR AUTOMATIC MOUNTING (SMT)  
WITHOUT MOUNTING PLATE

PACKAGE STYLE \_\_\_\_\_

LEAD FREE \_\_\_\_\_

NOTES

1. THIS PRODUCT IS THE CONNECTOR DESIGNED TO TERMINATE FPC/FFC AND COPE WITH AUTOMATIC MOUNTING (SMT).
2. THIS CATALOG NO. INDICATES PLASTIC TAPE PACKAGED CONNECTOR.
3. SEE PART DRAWINGS FOR DIMENSIONS D~F.
4. PLEASE CONSULT US IN CASE OF USING PARTS WITH \* MARK.



FCIconnect.com

Copyright FCI.

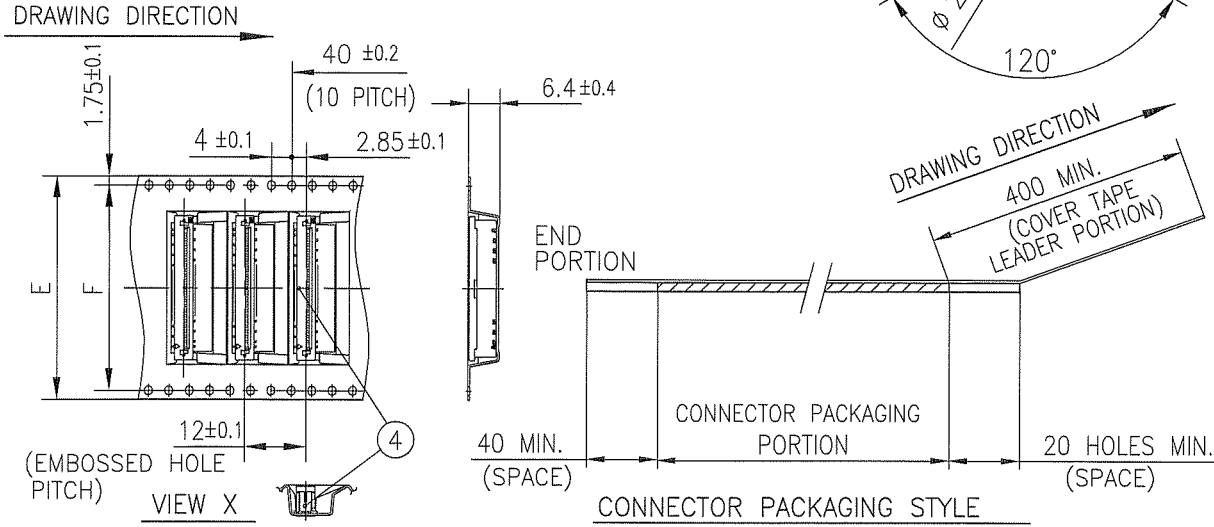


mat'l. code				surface 58/ISO 1302	tolerance ISO 406 / ISO 1101	projection	product family 58SF	CODE JP
ltr A	ecn no J09-0202	dr M.Y	date 2009-5-25	tolerances unless otherwise specified			title	
				angles	linear		CAT NO. TABLE FOR PLASTIC TAPE PACKAGED 1mm SPACING SMT CONN. (CAT.No.SFW__S-2ST_E9LF)	
				dr	M.YAMASHITA 2009-5-25		sheet 1 of 1 size	
				enr	M.YAMASHITA 2009-5-25		JSA 97526 A4	
				chr	S. Nishida 2009-5-25		type Product Customer Drawing	
				appd	S. Nishida 2009-5-25			
sheet index	revision sheet	A 1						Rev. A

SC-SFWS 03 JSA97525 97527  
form: A4

1

2



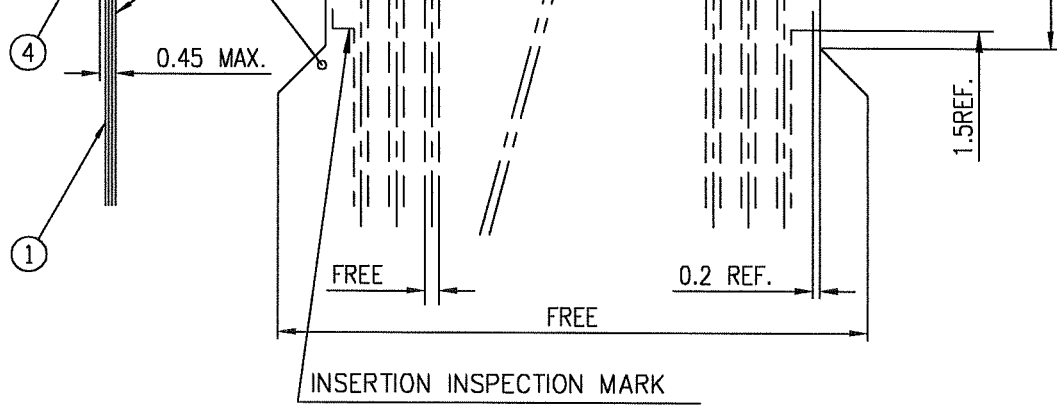
PT. NO.	PARTS NAME	CAT. NO.	MATERIAL	Q'TY	NOTE
1	REEL	—	POLYSTYRENE	1	COLOR : WHITE or BLACK
2	PLASTIC (EMBOSSED) TAPE	—	PET	—	COLOR : TRANSPARENCY
3	COVER	—	POLYESTER	—	COLOR : TRANSPARENCY
4	CONNECTOR	SFW__S-2ST_LF	SEE ATTACHED DWG.	500	—

NOTES

1. THIS IS PLASTIC TAPE PACKAGED CONNECTOR USED FOR FPC/FFC AND COPES WITH AUTOMATIC MOUNTING (SMT).
2. SEE JIS C 0806 (PACKING OF ELECTRONIC COMPONENTS ON CONTINUOUS TAPES (SURFACE MOUNTING DEVICES)) FOR SHAPE AND DIMENSIONS OF PLASTIC (EMBOSSED) TAPE AND REEL.
3. F DIMENSION IS PORTION OF THE CORE.

mat'l. code				surface ISO 1302 ✓	tolerance ISO 406 ISO 1101	projection	product family 58SF	CODE JP
ltr	ecn no	dr	date	tolerances unless otherwise specified		mm	title PLASTIC TAPE PACKAGED 1mm SPACING SMT CONNECTOR (Cat. No. SFW__S-2ST_E9LF)	
A	J09-0202	M.Y	2009-5-25	angles linear	±5			
				±5'		scale	dwg no sheet 1 of 1 size	
				dr <i>M. YAMASHITA</i> 2009-5-25		JSA 97527		A4
				enr <i>M. YAMASHITA</i> 2009-5-25		type Product Customer Drawing		
				chr <i>S. Nakamura</i> 2009-5-25				
				appd <i>J. Okamura</i> 2009-5-25				
sheet index	revision sheet	A	1					Rev. A

SC-SFWS03 JSA97525 97526 form: A4



PT. NO.	DESCRIPTION	MATERIAL	THICKNESS ( $\mu\text{m}$ )
1	BASE FILM	POLYIMIDE OR POLYESTER OR EQUIVALENT	25
2	CONDUCTOR	COPPER FOIL(PLATING : SOLDER $1\mu\text{m}$ MIN.)	35
3	OVERLAY	POLYIMIDE OR POLYESTER OR EQUIVALENT	—
4	SUPPORTING TAPE	POLYESTER OR POLYIMIDE OR EQUIVALENT	188

NOTES

1. NO BURR AT EACH PORTION.
2. NO PEELING IN COMMON USE.
3. TOTAL THICKNESS LIMIT OF EACH MATERIAL (INCLUDING ADHESIVE AGENT) IS SPECIFIED.

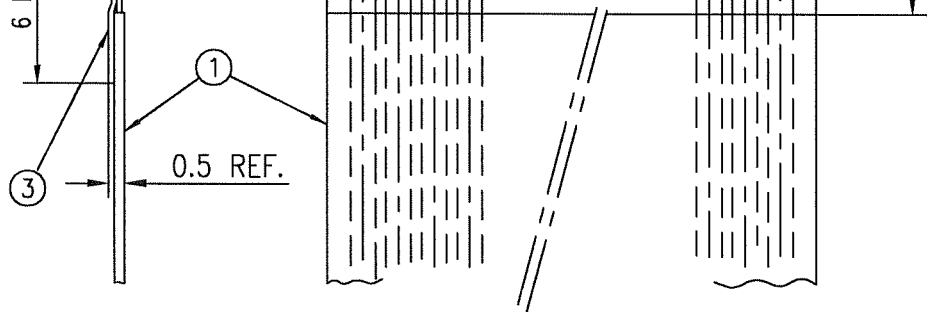
FCIconnect.com  
 Copyright FCI.

mat'l. code				surface $58$ ISO 1302 <input checked="" type="checkbox"/>		tolerance ISO 406 ISO 1101		projection 		product family 58SF		CODE JP	
ltr	ecn no	dr	date	tolerances unless otherwise specified				mm		title RECOMMENDED CABLE (CAT.No.SFW__S-2ST__)			
AA	J04-0333	H.T	Oct.13/04	angles		linear		scale $\times$		dwg no		sheet 1 of 1 size	
AB	J06-0430	H.T	10/19/06							JSA 93340		A4	
				dr	<i>[Signature]</i> 10/19/06						type Product Customer Drawing		
				enr	<i>[Signature]</i> 10/19/06								Rev.
				chr	<i>[Signature]</i> 10/19/06								AB
				appd	<i>[Signature]</i> 10/20/06								
sheet index	revision sheet	AB	1										

form: A4

1

2



PT. NO.	DESCRIPTION	MATERIAL	NOTE
1	INSULATOR	FLAME RESISTING POLYESTER OR EQUIVALENT	_____
2	CONDUCTOR	COPPER FOIL	PLATING: TIN OR SOLDER 1 μm MIN.
3	SUPPORTING TAPE	FLAME RESISTING POLYESTER OR EQUIVALENT	_____

NOTES

1. NO BURR AT EACH PORTION.
2. NO PEELING IN COMMON USE.

mat'l. code				surface 58 / tolerance ISO 1302 ✓ / ISO 406 / ISO 1101		projection		product family 58SF		CODE JP	
ltr	ecn no	dr	date	tolerances unless otherwise specified				title RECOMMENDED CABLE (CAT.No.SFW__S-2ST__)			
AA	J04-0333	H.T	Oct.13/04	angles	linear	mm					
AB	J06-0430	H.T	10/19/06			scale X		dwg no JSA 93341		sheet 1 of 1 size A4	
				dr	<i>[Signature]</i>			type Product Customer Drawing			
				enr	<i>[Signature]</i>						
				chr	<i>R. Stovace</i>						
				appd	<i>P. Madan</i>						
sheet index	revision	AB									Rev. AB
	sheet	1									

form: A4

1

2



## X-ON Electronics

Largest Supplier of Electrical and Electronic Components

*Click to view similar products for [FFC & FPC Connectors](#) category:*

*Click to view products by [Amphenol](#) manufacturer:*

Other Similar products are found below :

[K-FC20](#) [FH29B-80S-0.2SHW\(99\)](#) [FPH-2022G](#) [AYF332735](#) [52610-1075](#) [52610-1275](#) [52610-1934](#) [501864-3091-TR225](#) [086222026001800](#)  
[52610-0675](#) [62684-36210E9ALF](#) [52746-1671-TR250](#) [10051922-2810EHLF](#) [6-520415-9](#) [SFV6R-1STE9HLF](#) [XF3M-2915-1B-R100](#)  
[1658549-1](#) [46214008010800](#) [AYF534065TA](#) [AYF351525](#) [086212040340800+](#) [AYF530365TA](#) [67000-014LF](#) [67000-004LF](#)  
[006207341915000+](#) [DS1020-19RT1D](#) [67000-003LF](#) [67000-011LF](#) [67000-016LF](#) [HFW14R-2STE9LF](#) [SFV32R-2STBE9HLF](#) [SFW12R-](#)  
[5STE9LF](#) [SFW18R-1STAE9LF](#) [SFW4R-5STE9LF](#) [52807-0430](#) [046283021002868+](#) [THD1015-8CL-SN](#) [67000-006LF](#) [502250-8027](#)  
[104267-9617](#) [66987-011LF](#) [AYF362535](#) [F0501-T-50-20T-R](#) [HFW8S-2STAE1HLF](#) [67000-008LF](#) [67000-012LF](#) [ECC576069EU](#) [F1002-B-](#)  
[20-20T-R](#) [HFW15S-2STAE1HLF](#) [5019511030](#)