

SGX-4NH3

Industrial Ammonia Sensor

(Application : Portable Gas Detectors)

PERFORMANCE

| | |
|--------------------------------------|---------------------|
| Range | 0 – 100 ppm |
| Output Signal | 100 ± 30 nA/ppm |
| Typical Baseline Range (pure air) | < ±1 ppm equivalent |
| Linearity | Linear |
| Response time (T ₉₀) | <40 s |
| Maximum Overload | 200 ppm |
| Long-Term Output Drift | <20% per Annum |
| Recommended Load Resistor | 10 ohms |
| Repeatability | ±10% |
| Resolution | 1 ppm |
| Warranty | 1 year |
| Bias | No Bias |

OPERATING CONDITIONS

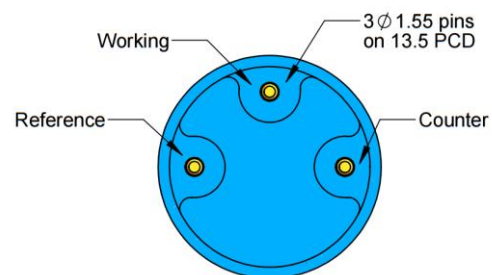
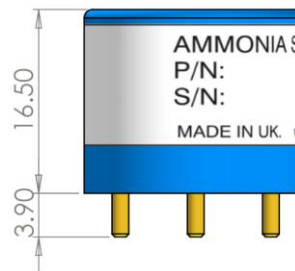
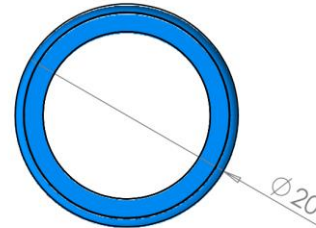
| | |
|---------------------------------|---|
| Temperature Range | -40°C to +50°C |
| Operating Humidity | 15 – 90% RH |
| Pressure range | 800 to 1200 mbar |
| Operating Circuit | See Application Note 2 |
| Recommended Storage Temperature | 0°C to 20°C |
| Storage life | 6 months in original packing (0 – 25°C) |
| Expected Operating Life | > 24 Months in Air |

INTRINSIC SAFETY DATA

| | |
|---------------------|--------|
| Maximum at 2000 ppm | 0.3 mA |
| Maximum o/c Voltage | 1.3 V |
| Maximum s/c Current | <1.0 A |

PRODUCT DIMENSIONS

All dimensions in mm
 All tolerances ±0.15 mm



IMPORTANT NOTES

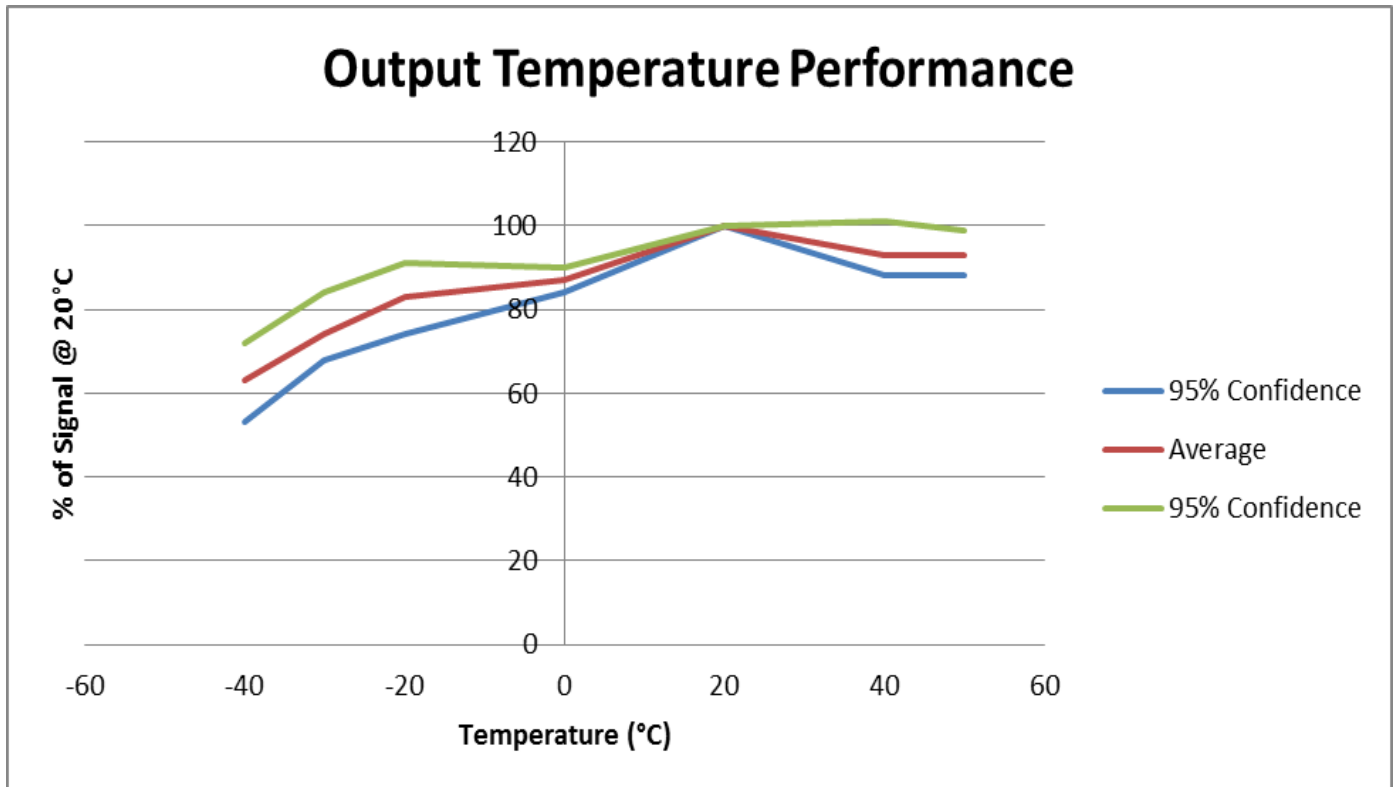
- All performance is based on conditions at 20°C, 50% RH and 1 atm, using SGX recommended circuitry.
- Sensor performance is temperature dependant; please contact SGX for temperature performance other than 20°C.
- Do not solder to the connector pins as this may damage the sensor and thereby invalidate the warranty.
- Details on recommended connector pins can be found in the Frequently Asked Questions within the Gas Sensor section of the SGX website.
- This device is designed to be RoHS compliant.

CROSS-SENSITIVITY DATA

| GAS | CONCENTRATION | SGX-4NH3 |
|------------------|---------------|----------|
| Hydrogen Sulfide | 25 ppm | 30 ppm |
| Sulfur Dioxide | 20 ppm | -6 ppm |
| Hydrogen | 100 ppm | 0 ppm |
| Nitric Oxide | 50 ppm | 0 ppm |
| Carbon Monoxide | 500 ppm | 0 ppm |
| Nitrogen Dioxide | 5 ppm | -7.5 ppm |
| Ethanol | 100 ppm | 0 ppm |
| Carbon Dioxide | 5000ppm | 0 ppm |

Note: This table is for reference only and are typical values. Cross Sensitivities may not be linear and should not be scaled. Calibration should be carried out with the actual gas at a known concentration.

TEMPERATURE



POISONING

SGX sensors are designed to operate in a wide range of harsh environments and conditions. However it is important that exposure to high concentrations of solvent vapours is avoided, both during storage, fitting into instrument and operation. When using sensors on printed circuit boards (PCBs), degreasing agents should be used prior to the sensor being fitted.

X-ON Electronics

Largest Supplier of Electrical and Electronic Components

Click to view similar products for [Air Quality Sensors](#) category:

Click to view products by [Amphenol](#) manufacturer:

Other Similar products are found below :

[GMS-MSTH2.S.V.3](#) [MO86571](#) [MO86561](#) [076074 01](#) [DE800.A.1](#) [MF010-2-LC1](#) [MF020-2-LC3](#) [KGZ10-5PIN](#) [GMS10SENSORS](#) [IR25TT](#)
[208280-0001](#) [IR11BD](#) [IR11GM](#) [IR12GM](#) [IR21BD](#) [GMS10-18C](#) [KGZ12](#) [S-300L-3V-5000-SLEEP-UART](#) [MP7227-TC](#) [SGPC3-TR-2.5KS](#)
[T6713-6H](#) [POLOLU-1482](#) [3.000.475](#) [3.000.496](#) [3.000.497](#) [HPMA115S0-XXX](#) [SGPC3-2.5k](#) [T3032-2-10K-24-P](#) [VQ6MB](#) [INIR-CD-5%](#)
[VQ23TB](#) [IR11GJ](#) [VQ31MB](#) [IR11BR](#) [GP2Y1026AU0F](#) [VQ549ZD](#) [MHM501-00](#) [MHM500-00A](#) [MHM305-01](#) [MICS-4514](#) [VQ548ZD-S](#)
[SEN-09403](#) [IR15TT](#) [MICS-5524](#) [MICS-5914](#) [MICS-2714](#) [INIR-ME-100%](#) [T8100-D](#) [VQ21TB](#) [IR21EJ](#)