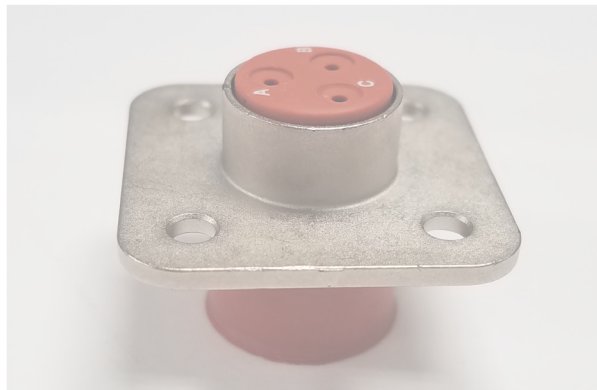
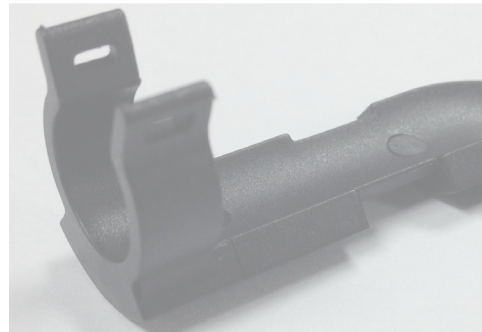
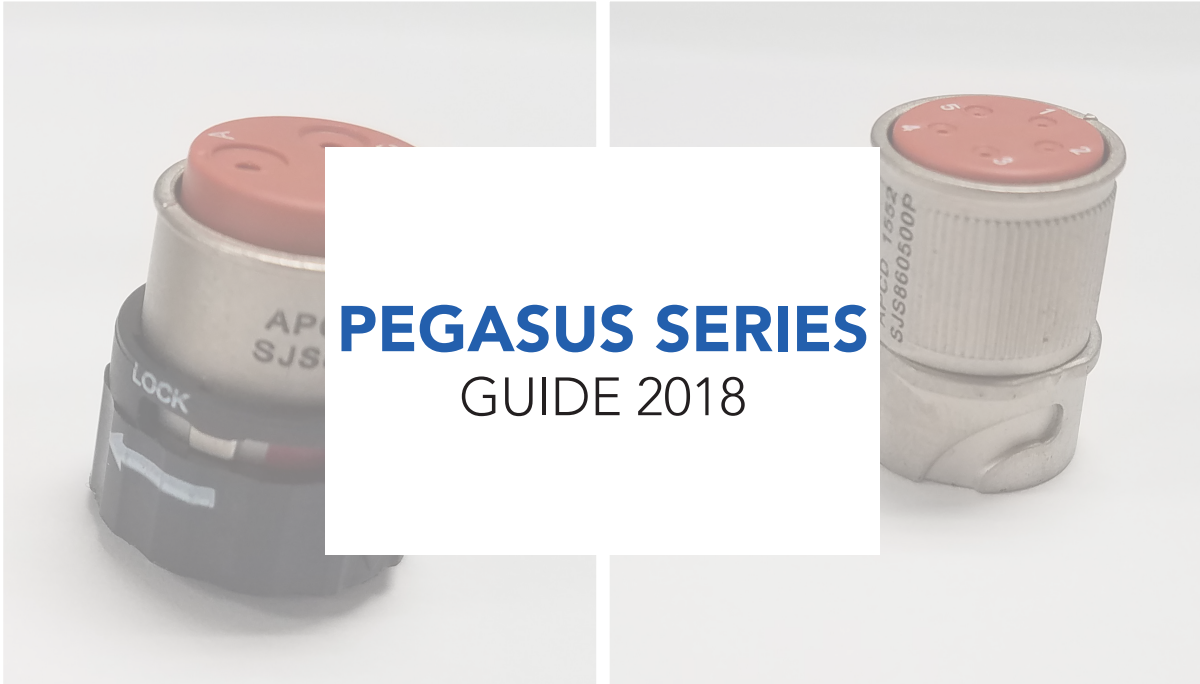
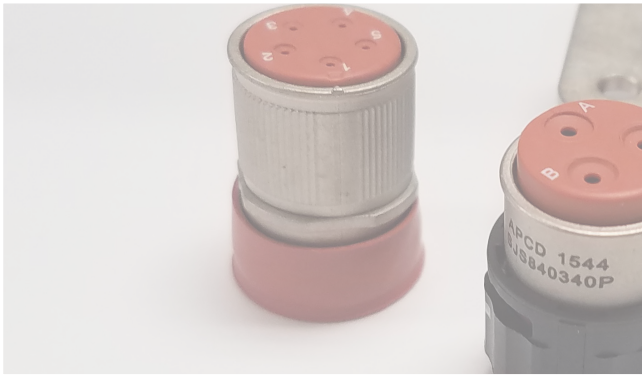


Amphenol LTD
MILITARY & AEROSPACE

The UK's Leading Supplier



PEGASUS SERIES

Description:

The Pegasus Series is Amphenol PCD's latest innovation in small, lightweight, rugged connectors and Amphenol LTD is excited to become its UK's leading supplier. Designed for use in harsh environments, Pegasus builds on the successful Luminus Aerospace connector with the addition of EMI shielding. EMI shielding is provided by electroless copper and nickel plate, with a copper alloy spring finger gasket to ensure shell to shell conductivity. Tests show between 40db and 60db of attenuation, depending on frequency. This combination of light weight, small size, and EMI shielding makes Pegasus the ideal choice where protection against ambient noise transients, or suppression of emitted noise is required, and space and weight are at a premium.

Features and Benefits:

Electroless Copper & Nickel plating- Shielding from ambient noise transients, suppression of emitted noise (DO-160G Section 21 categories B, L and M and DO-160G Section 20 categories S & T)

1/4 turn bayonet style connection- Simple and easy mate & unmate. Blind mate keying

Interfacial and Triple-Barrier Seal- Environmental sealing to IP67

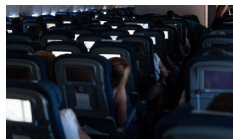
Multiple Configurations-Inline, Square Flange, Oval Flange, Jamnut PCB, Circular Snap-In

Scoop-Proof- Prevents contacts from being bent or electrically shorted during mating

Stainless Steel Contact Retainers- High contact retention force over operating life cycle

Typical Applications:

- Aviation & vehicle actuators
- Missile guidance & control systems
- Avionics sensors
- UAV control systems



PEGASUS SERIES

Shell Size

05 (max dia: 0.318)



2, size 22



3, size 22

11 (max dia: 0.700)



3, size 12



3, size 16

07 (max dia: 0.448)



6, size 22



8, size 22

14 (max dia: 0.875)



25, size 22

08 (max dia: 0.528)



4, size 16



5, size 22



9: 1, size 16; 8 size 22



9, size 22



3, size 16

10 (max dia: 0.630)



9: 4, size 16; 5 size 22



10: 4, size 16; 6 size 22

PEGASUS SERIES

Materials and Specifications

| | Twist & Lock |
|---|--|
| Materials | Insulator Body: Ultem / Polyetherimide |
| | Grommet & Face Seal: Silicone Rubber |
| | Contact Retainer: Stainless Steel |
| | Plating: Nickel over Copper |
| Temperature Range | -65°C to 125°C |
| Temperature Life | 500 hours @ 85°C |
| Insulation Resistance | 5000 MΩ Min. @ 500 VDC |
| Dielectric Withstanding | 1500 VAC, 60 Hz @ Sea Level, 1ma |
| | 300 VAC, 60 Hz @ 70,000 ft, 2ma |
| Durability | Min 100 mating cycles; 250 typical |
| Altitude Immersion | 5% salt solution, 75k feet |
| Temperature Cycling | 5(1) Hour Cycles: -65°C to 125°C |
| Thermal Shock | -65°C to 200°C |
| Vibration | 30G Sinusoidal; 43.96G Random |
| Shock | 300G, 3msec, Half-Sine |
| Housing Electrical Conductivity | 6 milliohm |
| EMI Shielding Effectiveness | 65db @ 100Mhz 60db @ 200Mhz 55db @ 300Mhz 55db @ 400Mhz 45db @ 800Mhz 45db @ 1Ghz |
| Salt Spray | 5% Salt Spray @ 95°C for 48 Hours |
| Humidity | 10 Days @ 25°C to 65°C, 90% - 95% RH |
| Fluid Immersion | Lubricating Oil per Mil-Prf-7808 |
| | Cleaning Compound per Mil-Prf-87937, Alkaline Base |
| | Isopropyl Alcohol & Mineral Spirit Solution |
| | Skydrol Hydraulic Fluid |
| | Hydraulic Fluids per MIL-PRF-83282 MIL-PRF-87257 |
| | Ethylene Glycol |
| | Propylene Glycol |
| | Aviation Jet A |
| Seal Rating | IP67 |
| Flammability | UL94, V0. |
| | DOTG section 26.6.2 & 26.6.3 |
| | FAR Part 25 App F Part I |
| RoHS & REACH Compliance | Yes |
| Contact Insertion & Removal Force <small>(not to exceed)</small> | less than 3 lbs |
| | less than 5 lbs insert (sz22) |
| | less than 4lb remove (sz22) |
| | less than 12lbs insert (sz 16) |
| | less than 12lbs remove (sz 16) |
| Coupling Torque | greater than 10lbs |
| | less than 10lbs, sz 22 |
| | less than 25lbs, sz 16 |
| | less than 5lbs |

PEGASUS SERIES

Part Numbering (Twist & Lock)



| # of Positions | Contact Size | Shell Size | Key | Color | Plug P/N | Inline Receptacle P/N | Circular Receptacle P/N | Square Receptacle PN | Jam Nut Stand-Off Receptacle PN | Oval Receptacle PN | Jam Nut Rear Mount Receptacle PN |
|----------------|--------------|------------|-----|--------|-------------|-----------------------|-------------------------|----------------------|---------------------------------|--------------------|----------------------------------|
| 2 | 22D | 5 | - | black | SJS830250P | SJS830270P | - | - | - | SJS502170P | SJS502190P |
| 3 | 22D | 5 | - | black | SJS830210P | SJS830230P | - | - | - | SJS503170P | SJS503190P |
| 3 | 20 | 7 | - | white | SJS862300P | SJS862400P | - | SJS862450P | - | - | - |
| 3 | 16 | 8 | A | white | SJS840310P | SJS840300P | SJS840320P | SJS830730P | - | - | - |
| 3 | 16 | 8 | B | black | SJS840340P | SJS840350P | SJS840330P | SJS830130P | - | - | - |
| 3 | 12 | 10 | - | | SJS003110P* | SJS003120P* | - | - | - | - | - |
| 4 | 16 | 8 | A | white | SJS840410P | SJS840400P | SJS840420P | SJS840740P | SJS840760P | - | SJS840790P |
| 4 | 16 | 8 | B | white | SJS840440P | SJS840450P | SJS840430P | - | - | - | - |
| 4 | 20 | 7 | | black | SJS704110P | SJS704120P | | | | | |
| 5 | 22D | 8 | - | white | SJS860510P | SJS860500P | SJS860520P | SJS805730P | - | - | - |
| 5 | 22D | 8 | - | white | SJS870510P | - | SJS870520P | - | - | - | - |
| 6 | 22D | 7 | - | black | SJS861700P | SJS861800P | - | - | SJS706160P | - | - |
| 8 | 22D | 7 | A | black | SJS830100P | SJS830200P | - | SJS830220P | SJS708160P | SJS708190P | SJS708180P |
| 8 | 22D | 7 | B | green | SJS830101P | SJS830201P | - | SJS830221P | - | - | - |
| 8 | 22D | 7 | C | yellow | SJS830102P | SJS830202P | - | SJS830222P | - | - | - |
| 9 | 22D | 8 | - | black | SJS862100P | SJS862200P | - | SJS809130P | - | - | - |
| 12 | 22D | 8 | - | white | SJS861300P | SJS861400P | - | SJS812730P | SJS812760P | - | - |
| 12 | 22D | 11 | A | black | SJS112110P | SJS112120P | - | - | SJS112160P | - | - |
| 12 | 22D | 11 | B | | SJS112210P | SJS112220P | - | - | SJS112260P | - | - |
| 12 | 22D | 11 | C | | SJS112310P | SJS112320P | - | - | SJS112360P | - | - |
| 12 | 22D | 11 | D | | SJS112410P | SJS112420P | - | - | SJS112460P | - | - |
| 25 | 22D | 14 | A | black | SJS425110P | SJS425120P | - | - | SJS425160P | - | - |
| 25 | 22D | 14 | B | | SJS425210P | SJS425220P | - | - | SJS425260P | - | - |
| 25 | 22D | 14 | C | | SJS425310P | SJS425320P | - | - | SJS425360P | - | - |
| 25 | 22D | 14 | D | | SJS425410P | SJS425420P | - | - | SJS425460P | - | - |
| 12 | 16 | 14 | - | | SJS412110P" | SJS412120P" | - | - | - | - | - |
| 9 | 16 (1) | 8 | - | white | SJS860100P | SJS860200P | - | - | - | - | - |
| | 22D (8) | | | | | | | - | - | - | - |
| 9 | 16 (4) | 10 | - | white | SJS860910P | SJS860900P | - | SJS0AA730P | - | - | - |
| | 22D (5) | | | | | | | - | - | - | - |
| 10 | 16 (4) | 10 | - | white | SJS861100P* | SJS861200P* | SJS0AB730P | - | - | SJS0AB770P | - |
| | 22D (6) | | | | | | | - | - | - | - |
| 1 | Quadrax | 8 | - | | SJS801110P | SJS801120P | - | SJS801130P* | SJS801160P* | SJS801170P* | SJS80119P* |
| 5 | 12 (3) | 11 | - | black | SJS1AE110P* | SJS1AE120P* | - | - | - | - | - |
| | 22 (2) | | | | | | - | - | - | - | - |

*Available at extended lead time.

PEGASUS SERIES

Part Numbering (Accessories)

| Shell Size | Strain Relief Single | Strain Relief Single 90° | Strain Relief Single 45° | Double Strain Relief | Double Side Tape Mount Cradle | Screw Mount Cradle | Tube Mount Cradle | Single Side Tape Mount Cradle | Double Side Tape Mount Cradle | Dummy Flanges | Hard Protective Caps |
|------------|----------------------|--------------------------|--------------------------|----------------------|-------------------------------|--------------------|-------------------|-------------------------------|-------------------------------|---------------|----------------------|
| 5 | SJSA55000 | SJSAA5100 | SJSAA5200 | SJSA56000 | SJS257000 | SJS257100 | SJSA5V000 | SJS5AV010 | SJS5AV020 | - | SJSA5B000 |
| 7 | SJS450350 | SJSA75100 | SJSA75200 | SJSA76000 | SJS883000 | SJS450250 | SJSA7V000 | SJSA7V010 | SJSA7V020 | SJS830220D | SJSA7B000 |
| 8 | SJSA85000 | SJSA85100 | SJSA85200 | SJSA86000 | SJS445000 | SJS450100 | SJSA8V000 | SJSA8V010 | SJSA8V020 | - | SJSA8B000 |
| 10 | SJSA05000 | SJSA05100 | SJSA05200 | SJSA06000 | SJS991000 | - | SJSA0V000 | SJSA0V010 | SJSA0V020 | SJS0AA730D | SJSA0B000 |

Contact Matrix

| Contact Size | Contact Style | Available | | Contact P/N | | QPL Part No. (Machined Only) | Contact Retention | Crimp Tensile Strength |
|--------------|---------------|-----------|------------|-------------|------------------|---------------------------------|-------------------------------|------------------------|
| | | Push-Pull | Twist-Lock | Machined | Stamped & Formed | | | |
| 12 | Pin | Yes | Yes | CNP058365 | SCP058365 | M39029/58-365 | .012" [0,30mm] @ 30lbf [133N] | 100lbf [445N] |
| | Socket | No | Yes | CNS057359 | SCS057359 | M39029/57-359 | | |
| | Socket-L | Yes | No | CNS056353 | n/a | M39029/56-353 | | |
| 16 | Pin | Yes | Yes | CNP058364 | SCP058364 | M39029/58-364 | .012" [0,30mm] @ 25lbf [111N] | 40lbf [180N] |
| | Socket | No | Yes | CNS057358 | SCS057358 | M39029/57-358 | | |
| | Socket-L | Yes | No | CNS056352 | n/a | M39029/56-352 | | |
| 20 | Pin | Yes | Yes | CNP058363 | SCP058363 | M39029/58-363 | .012" [0,30mm] @ 20lbf [90N] | 20lbf [90N] |
| | Socket | No | Yes | CNS057357 | SCS057357 | M39029/57-357 | | |
| | Socket-L | Yes | No | CNS056351 | n/a | M39029/56-351 | | |
| 22D | Pin | No | Yes | CNP058360 | n/a | M39029/58-360 | .012" [0,30mm] @ 10lbf [44N] | 10 lbf [45N] |
| | Socket | No | Yes | CNS057354 | n/a | M39029/57-354 | | |

| Contact Size | Wire Accommodations | | | | Tool Information | | |
|--------------|---------------------|------------------------|------------------------------|------------------------------|------------------|----------------------|------------------------|
| | Size (AWG) | Max Current Rating (A) | ØD Range | Strip Length | Basic Tool | Positioner | Insertion/Removal Tool |
| 12 | 12 | 23 | .097 - .142" [2,46 - 3,61mm] | .209 - .240" [5,31 - 6,10mm] | M22520/1-01 | M22520/1-04 (Yellow) | M81969/14-04 |
| | 14 | 17 | | | | | |
| 16 | 16 | 13 | .065 - .109" [1,65 - 2,77mm] | .209 - .240" [5,31 - 6,10mm] | M22520/1-01 | M22520/1-04 (Blue) | M81969/14-03 |
| | 18 | 10 | | | M22520/7-01 | | |
| | 20 | 7.5 | | | M22520/7-01 | | |
| 20 | 20 | 7.5 | .040 - .083" [1,02 - 2,11mm] | .209 - .240" [5,31 - 6,10mm] | M22520/1-01 | M22520/1-04 (Red) | M81969/14-11 |
| | 22 | 5 | | | M22520/2-01 | | |
| | 24 | 3 | | | M22520/7-01 | | |
| 22D | 22 | 5 | .030 - .054" [0,76 - 1,37mm] | .141 - .172" [3,58 - 4,37mm] | M22520/2-01 | M22520/2-06 | M81969/14-01 |
| | 24 | 3 | | | M22520/7-01 | | |
| | 26 | 2 | | | M22520/7-01 | | |
| | 28 | 1.5 | | | M22520/7-01 | | |

www.amphenol.co.uk

X-ON Electronics

Largest Supplier of Electrical and Electronic Components

Click to view similar products for [Standard Circular Connector](#) category:

Click to view products by [Amphenol](#) manufacturer:

Other Similar products are found below :

[5M2530B10P](#) [600259N006](#) [600273N007](#) [6134-336-13149](#) [6134-337-11149](#) [6134-337-2390](#) [6134-341-17149](#) [6280-4SG-516](#) [6280-7SG-3DC](#)
[6290](#) [6291A](#) [66200A-10](#) [680-SMG](#) [681-PMG](#) [CXS3102A14S2P](#) [CXS3102A181S](#) [7251-6SG-300](#) [7271-6SG-300](#) [7282-3PG-300-CH3](#) [75-](#)
[474014-05S](#) [75-474618-01S](#) [75-474618-04P](#) [75-474618-04S](#) [799539-000](#) [MI8-SE](#) [805-005-07NF11-19PC](#) [805-005-07NF15-7PA](#) [8280-4PG-](#)
[516](#) [8280-7PG-519](#) [8282-5PG-519](#) [836783-1](#) [MP-4102-25P-C](#) [862256-1](#) [864019-2](#) [866857-1](#) [867865-1](#) [PT01SP-14-18P](#) [PT08P-14-5S](#)
[PTSF06SE-14-12S](#) [120-1833-000](#) [QCM019PC2DC012B](#) [1-2069279-1](#) [121583-0217](#) [121667-0020](#) [129591AU](#) [1000B BULK](#) [RD10A16-19-](#)
[P6CS051/1](#) [RD10A20-31-P8CS051/1](#) [RD16A14-12-S6CS051/2](#) [1301240290](#) [1301240347](#)