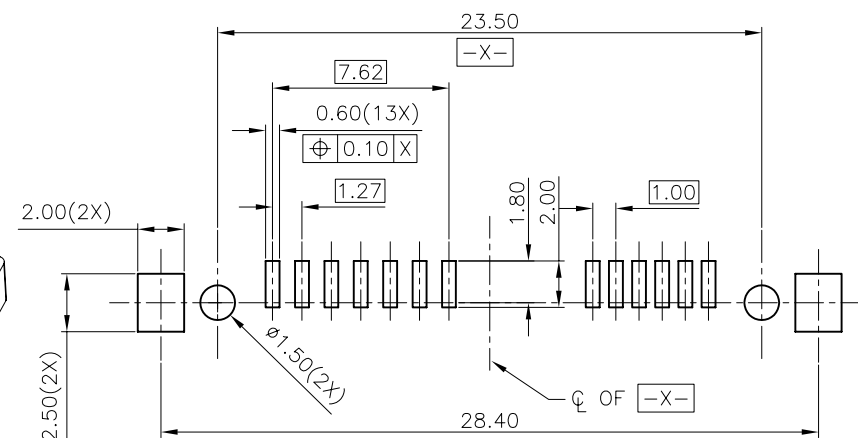
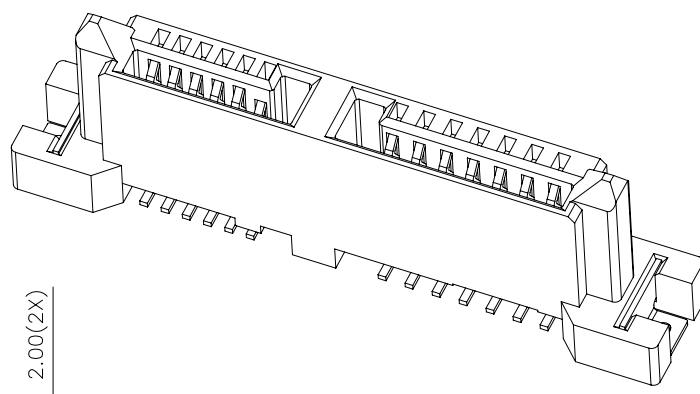
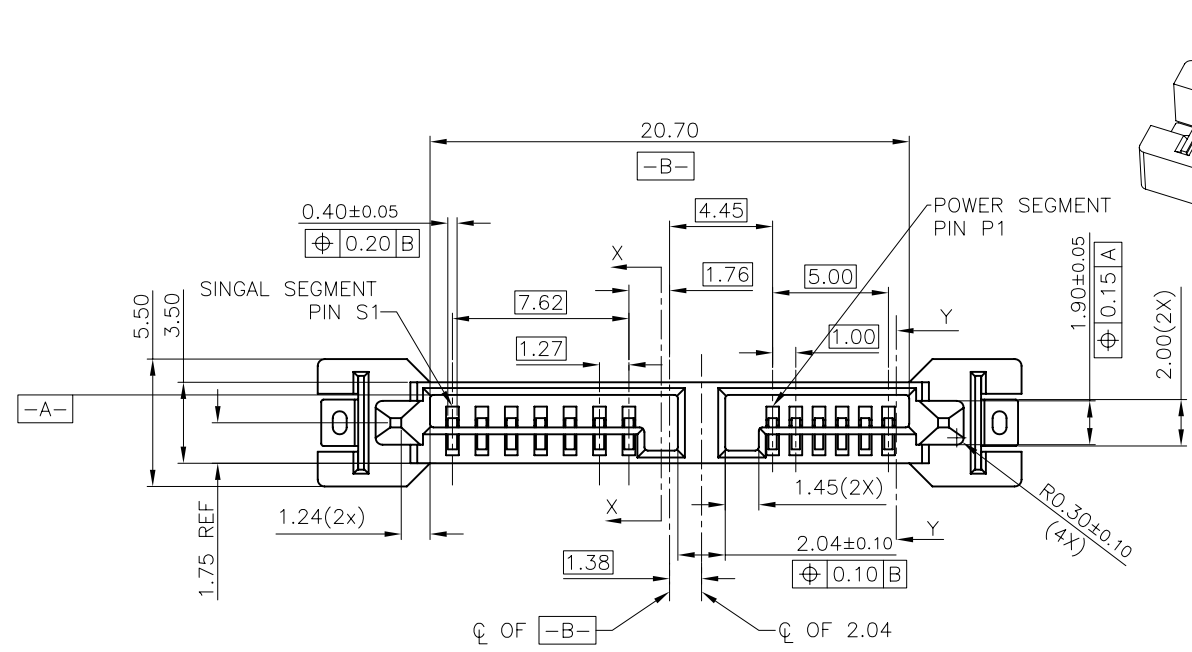


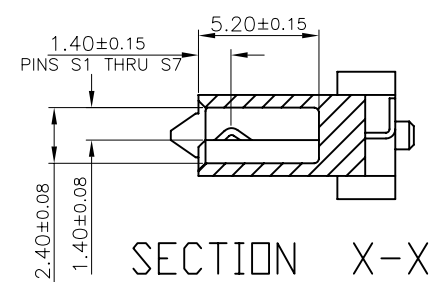
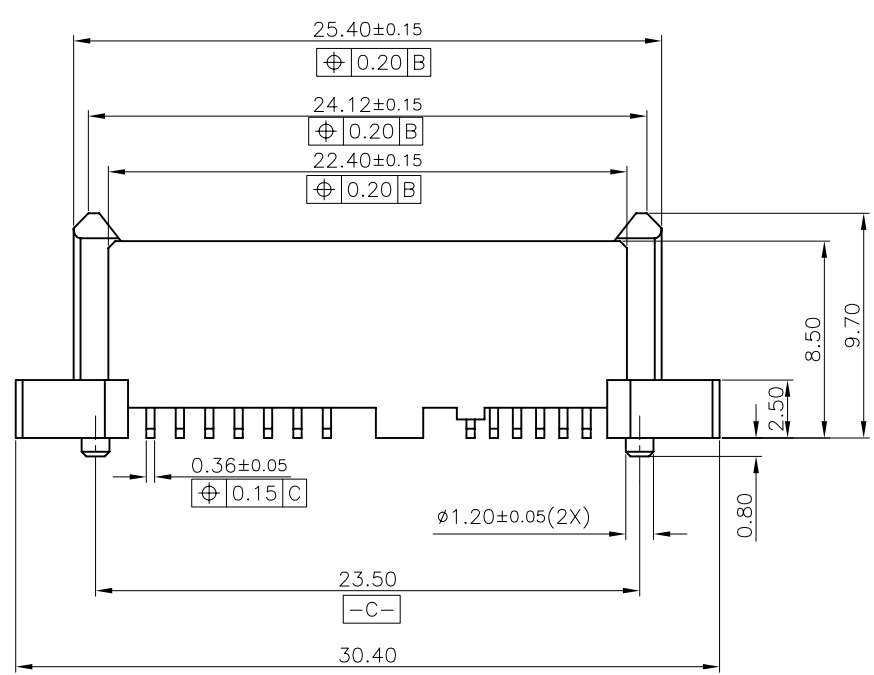
This document is the property of Amphenol Corporation and is delivered on the express condition that it is not to be disclosed, reproduced or used, in whole or in part, for manufacture or sale by anyone other than Amphenol Corporation without its prior consent, & that no right is granted to disclose or to use any information in this document.

# CUSTOMER DRAWING

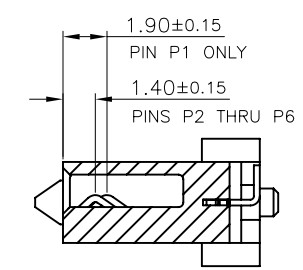
REVISIONS				
SYM	ECN	DESCRIPTION	DATE	APPROVED
A		RELEASED TO CUSTOMER	4/15/06	IP



RECOMMENDED PCB LAYOUT  
TOLERANCE: ±0.05mm



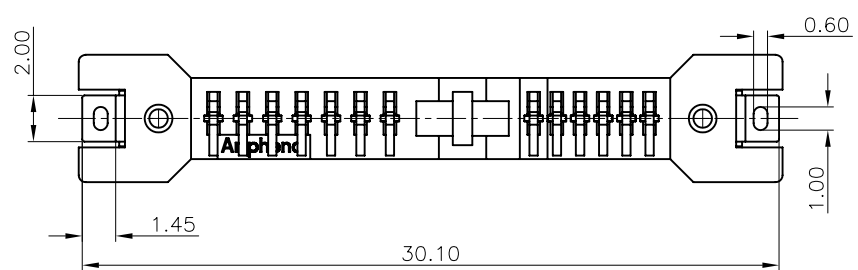
SECTION X-X



SECTION Y-Y

- NOTE:
- MATERIAL: HOUSING: HIGH TEMPERATURE THERMAL PLASTIC, UL94V-0 BLACK  
TERMINAL: COPPER ALLOY, THICKNESS=0.25MM  
SCREW NAL: STAINLESS, THICKNESS=0.35MM
  - PLATING: CONTACT AREA: SEE P/N SYSTEM  
SOLDERTAIL: TIN PLATING  
UNDERPLATE: NICKEL PLATING
  - PACKING: TRAY
  - MATERIAL SHOULD BE FULFILLED AMPHENOL SPEC, SSN2002
  - P/N SYSTEM:  
SSATA-101-0102-1-X

1: 0.76um Au PLATING ON CONTACT AREA;  
2: 0.38um Au PLATING ON CONTACT AREA;  
3: GOLD FLASH ON CONTACT AREA.



UNLESS OTHERWISE SPECIFIED TOLERANCES		APPROVAL		DATE	Amphenol
U.S.	METRIC	DRAWN	Maya.Lu	4/15/06	
0.0	+/-	0.30	CHECKED	IP	TITLE SLIMLINE SATA REC CONNECTOR
0.00	+/-	0.15	CHECKED		
FRACTIONS +/-		DRAWING FILE :			SIZE A3
ANGLES +/-		DRAWING\_SATA\CSSATA10101021X.DWG			
FOR MATERIALS AND FINISHES SEE NOTES		REMOVE SHARP EDGES		ANGLE OF PROJECTION	DRAWING NO. C SSATA-101-0102-1-X
DIMENSIONS		U.S.		INCHES	REV. A
(METRIC)		(MM)			SCALE NONE
					SHEET 1 OF 1

## X-ON Electronics

Largest Supplier of Electrical and Electronic Components

*Click to view similar products for [I/O Connectors](#) category:*

*Click to view products by [Amphenol](#) manufacturer:*

Other Similar products are found below :

[571763P](#) [58098-0628](#) [72.250.1628.2](#) [72.250.2428.2](#) [74720-0505](#) [76.350.0729.0](#) [76871-1403](#) [FCN-244F080-G/1](#) [FCN-260A9920](#) [MP-5T180MUNNA-005](#) [PCR-E36PM](#) [PCS-XE26MA+](#) [G38A71314B](#) [1571250010](#) [157-22500-3](#) [MS3471L14-19P L/C](#) [192991-0703](#) [172501-4002](#) [172501-6002](#) [FCN-260C008-A/L0](#) [FCN-260C024-AL0](#) [FCN-261Z008](#) [2000314-1](#) [200331-1](#) [PCR-E36FC+](#) [PCS-E28FS+](#) [PCS-XE26SLFD+](#) [PCS-XE26SLFDT+](#) [G730VID08BDC24](#) [HDR-E14MSG1+](#) [U90B2054081210](#) [UE86K842720321](#) [38113800006](#)  
[DP3AR020WQ1R200](#) [Z4.102.0680.0](#) [500-1040](#) [500-1052](#) [500-1054](#) [ZP-4008-66L](#) [0709821002](#) [DX40-20P\(55\)](#) [5554841-1](#) [MS3474W18-8P-LC\\*](#) [SM3106F14S-7S-LC](#) [U90B3054061110](#) [U65-E04-4020](#) [ZPF000000000097891](#) [557-262M2-06C](#) [747360449](#) [10099439-003C-TRLF](#)