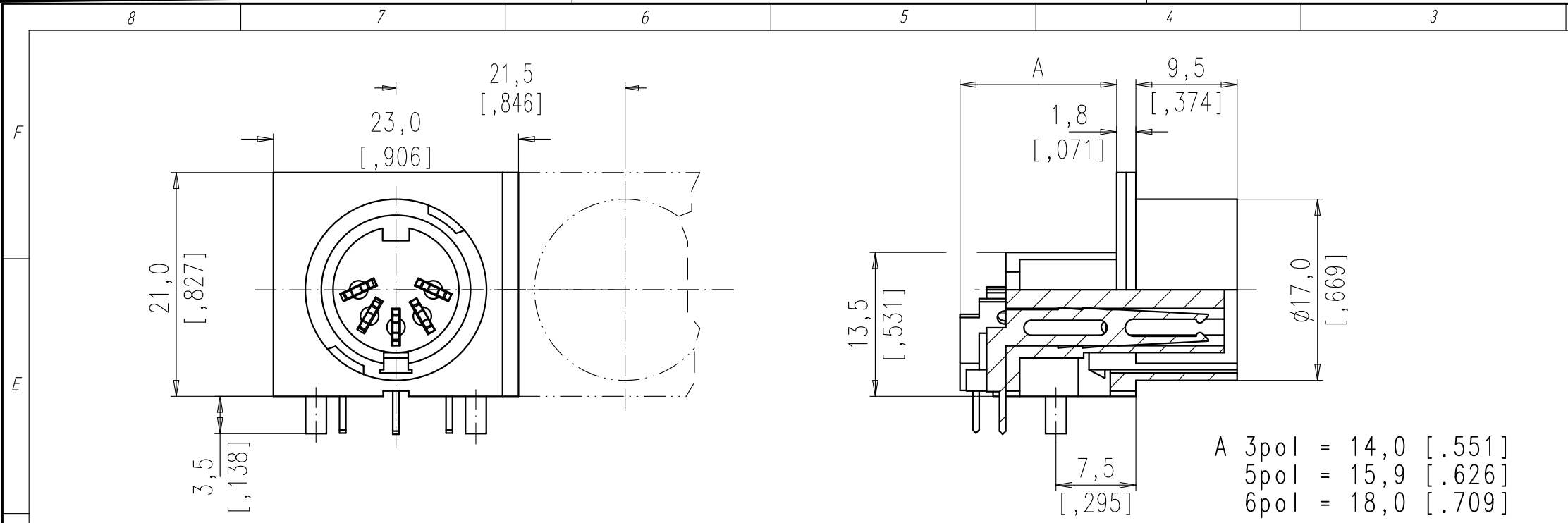


Copying of this document and giving it to others and the use or communication of the contents thereof, are forbidden without express authority. Offenders are liable to the payment of damages. All rights are reserved in the event of the grant of a patent or the registration of the utility model or design.



A 3pol = 14,0 [0.551]
 5pol = 15,9 [0.626]
 6pol = 18,0 [0.709]

| | | | |
|---------------|----------------------------|------------------------------|--------------|
| | 14 | - | - |
| | 12 | - | - |
| | 8 IEC | - | - |
| | 7 IEC | - | - |
| | 7 | - | - |
| | 6 | T 3427 600 U | T 3427 200 U |
| | 5 | T 3377 600 U | T 3377 200 U |
| | 5 IEC | T 3397 600 U | T 3397 200 U |
| | 4 | - | - |
| | 3 | T 3277 600 U | T 3277 200 U |
| SYMBOL symbol | POLZAHL number of contacts | housing black | housing gray |
| | | TYP-NUMMER-AG type-number-AG | |

| | | | | | | | | | | | | |
|---|-------------------------------|---|---------------|---------------|---------------|---------------|---------------|---------------|---------------------------------|----|-----|--|
| Polzahl number of contacts | Norm standard | 3 | 4 | 5 | 5 | 6 | 7 | 7 | 8 | 12 | 14 | |
| Kontaktanordnung nach DIN contact arrangement acc. to DIN | | 41524 60130-9 | - 60130-9 | - | 41524 60130-9 | 45322 60130-9 | - | 45329 60130-9 | 45326 60130-9 | - | - | |
| Kontaktanordnung nach IEC contact arrangement acc. to IEC | | | | | | | | | | | | |
| Bemessungsspannung rated voltage | IEC 60664-1 | 300V = | | 100V = | 300V = | | 100V = | | 150V = | | | |
| Bemessungsspannung rated voltage | UL 1977 | 250V | | | | | | | | | 60V | |
| Bemessungs-Stoßspannung rated impulse withstand voltage | IEC 60664-1 | 1500V | | 1200V | 1500V | | 1200V | | | | | |
| Verschmutzungsgrad pollution degree | IEC 60664-1 | 1 | | | | | | | | | | |
| Überspannungskategorie installation category | IEC 60664-1 | I | | | | | | | | | | |
| Isolierstoffgruppe insulation group | IEC 60664-1 | II, 400 ≤ CTI < 600 | | | | | | | | | | |
| Strombelastbarkeit current rating | IEC 60512-5-2 Test 5b UL 1977 | 5A / +40°C / +104°F | | | | | | | 3A / +40°C / +104°F | | | |
| Isolationswiderstand insulation resistance | IEC 60512-3-1 Test 3a | >10 ¹⁰ Ω | | | | | | | | | | |
| Durchgangswiderstand contact resistance | IEC 60512-2-1 Test 2a | < 5m Ω | | | | | | | | | | |
| Prüfklasse climatic category | IEC 60068-1 | 40 / 100 / 56 | | | | | | | | | | |
| Temperaturbereich temperatur range | IEC 60068-1 | -40°C ... +100°C -40°F ... +212°F | | | | | | | | | | |
| IP-Schutzart IP-degree | IEC 60529 | IP 40 | | | | | | | | | | |
| Steck- und Ziehkraft Insertion and withdrawal forces | IEC 60512-13-2 Test 13b | 25N 90.oz | 30N 110.oz | 35N 125.oz | 50N 180.oz | 55N 200.oz | 60N 220.oz | 50N 180.oz | | | | |
| Mechanische Lebensdauer mechanical operation | IEC 60512-9-1 Test 9a | silber/silver ≥ 500 Steckzyklen/mating cycles | | | | | | | | | | |
| Werkstoff Gehäuse housing material | | Überwurfmutter Messing, Zugentlastung Zink-Druckguß; Oberfläche vernickelt coupling ring brass, strain relief, die cast, nickel plated | | | | | | | | | | |
| Werkstoff Kontaktträger dielectric material | | Thermoplast thermoplastic | | | | | | | | | | |
| Kontaktoberfläche contact plating | | silver plated | | | | | | | | | | |
| Anschlusstechnik termination technique | | löten solder | | | | | | | | | | |
| Anschlussquerschnitt wire gauge | | löten/solder ≤ 0,5 mm ² / 20AWG | | | | | | | ≤ 0,25 mm ² / 24 AWG | | | |
| Brennbarkeit flammability | | UL 94 V0 | | | | | | | | | | |
| Verriegelung locking system | | Bajonett bayonet | | | | | | | | | | |

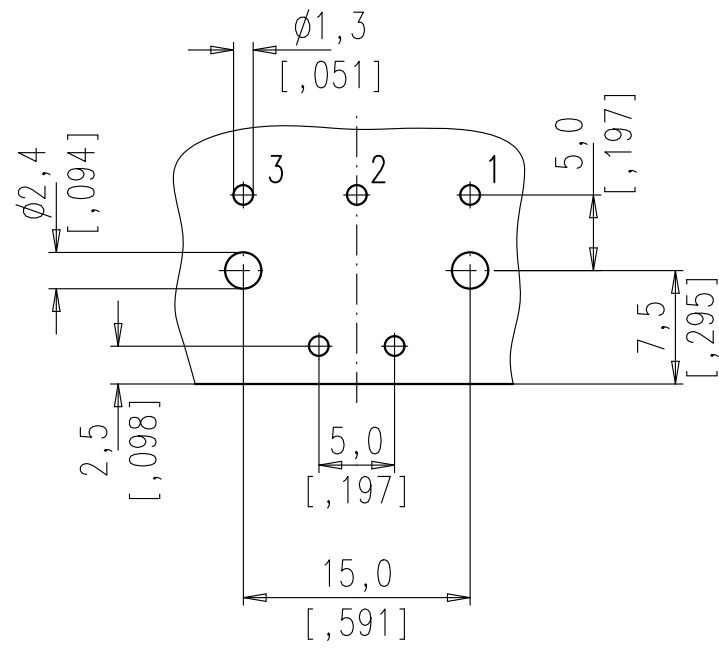
All technical data have been measured in a laboratory environment and can be different during practical usage of the product. Any product information is for descriptive usage only and not legally binding; particularly the information does not constitute or provide any legal guaranties ("Beschaffensgarantie" or "Haltbarkeitsgarantie")

| | | | | | | |
|-------------------------------|----------------------|----------------------------------|------------|-------------------------------------|----|---------------|
| Gewicht (errechnet)/ Calc WT: | 9 | Zul. Abw./Tolerances: | | Maßstab/Scale 2:1 | A3 | |
| Prüfmaß/Testdimension | | | | CUSTOMER DRAWING | | |
| Teileindex Part index number | | | | Gerätedose 90° Female receptacle | | |
| | | 12 | Datum/Date | Name | | |
| | | Gez. | 22.09. | jerry.zhang | | |
| | | Drawn | | | | |
| | | Gepr. | | | | |
| | | Checked | | | | |
| | | Amphenol-Tuchel Electronics GmbH | | M M-GB T 3XX7 X00 U | | Blatt/Sheet 1 |
| 01 | 2012000003 | 22.09.12 | JZ | Ers. f./Similar to: | | 2 Bl. |
| Index | Änderung/Description | Datum/Date | Name | | | |

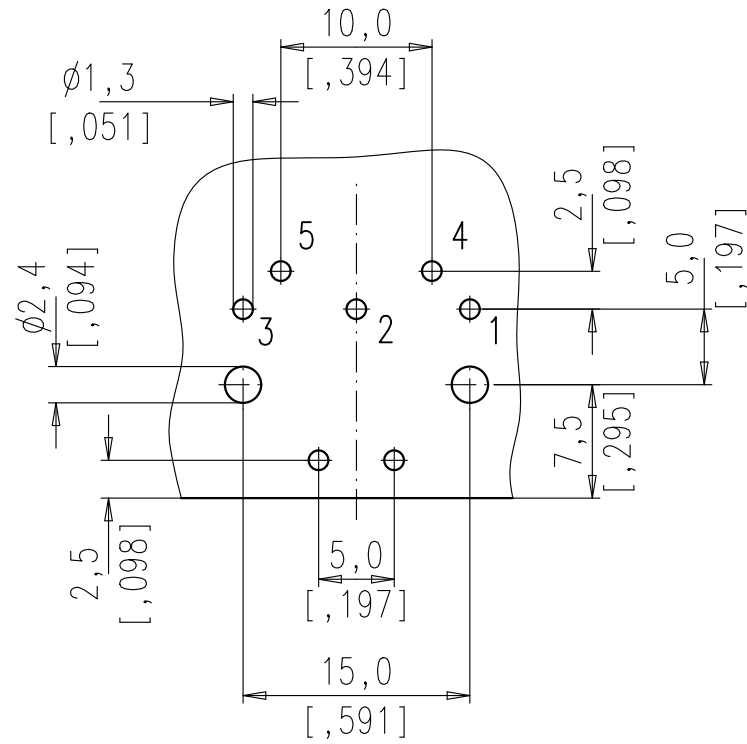
Weitergabe sowie Vervielfältigung dieser Unterlage, Verwertung und Mitteilung ihres Inhalts nicht gestattet, soweit nicht ausdrücklich zugestanden. Zuwiderhandlungen verpflichten zu Schadenersatz. Alle Rechte für den Fall der Patenterteilung oder Gebrauchsmuster-Eintragung vorbehalten.

Copying of this document and giving it to others and the use or communication of the contents thereof, are forbidden without express authority. Offenders are liable to the payment of damages. All rights are reserved in the event of the grant of a patent or the registration of the utility model or design.

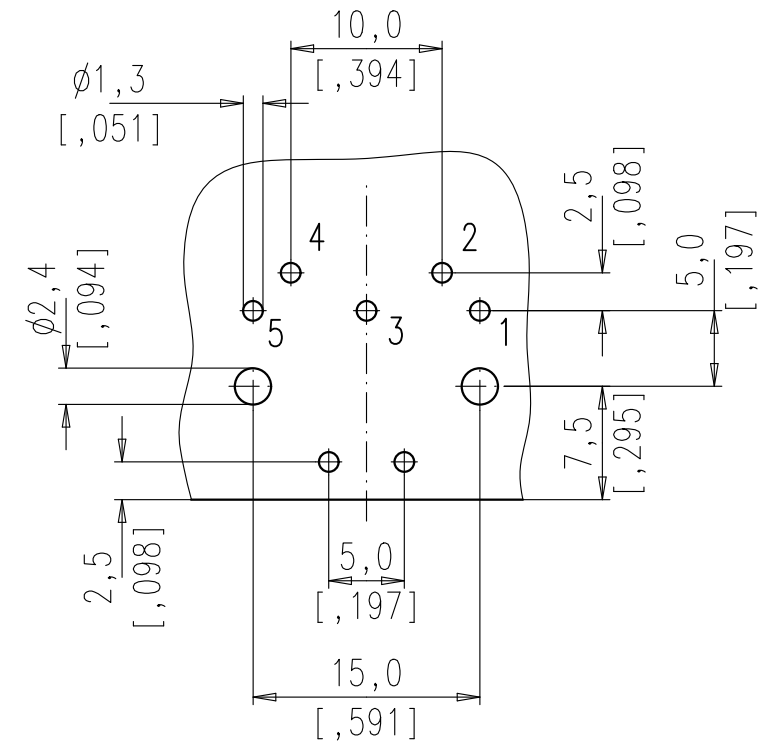
3 Pol



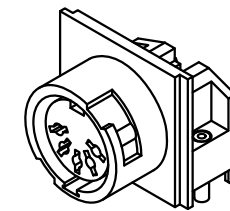
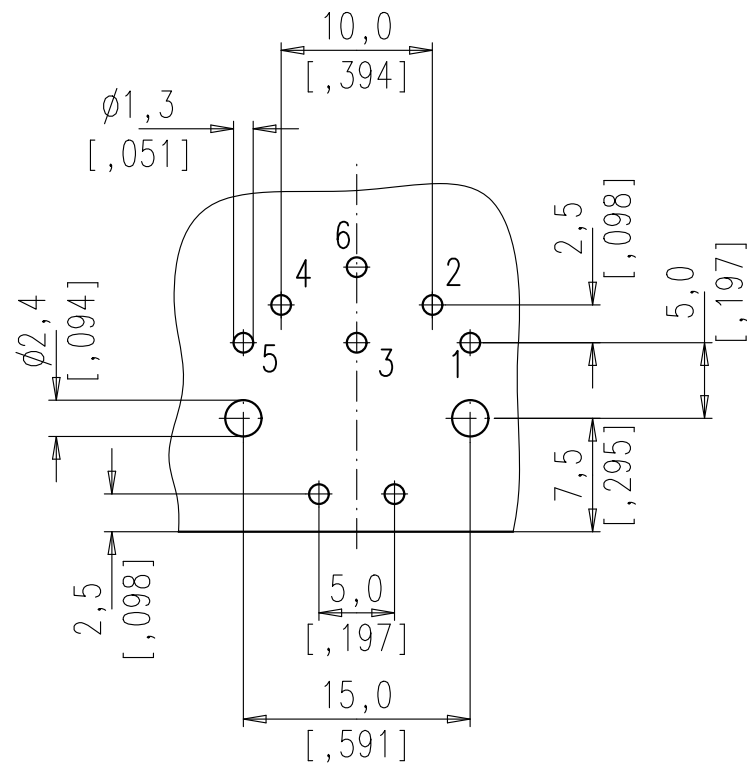
5 Pol Stereo



5 Pol



6 Pol



| | | | | | | |
|-------------------------------|----------------------|----------------------------------|------------------|--------------------------|-------------------------------|---------------|
| Masse (errechnet)/Calc Wt: | 9 | Zul. Abw./Tolerances: | ±0,10 ◁ ±1,0° | Maßstab/Scale 5:1 | A3 | |
| Prüfmaß/Testdimension | | DIN/ISO 13715 | CUSTOMER DRAWING | | | |
| Teileindex Partindexnumber | | 12 | Datum/Date | Name | Gerätedose 90° | |
| | | Gez. | 22.09. | jerry.zhang | Female receptacle, PCB layout | |
| | | Drawn | | | | |
| | | Gepr. | | | | |
| | | Checked | | | | |
| | | Amphenol-Tuchel Electronics GmbH | | M | M-GB T 3XX7 X00 U | Blatt/Sheet 2 |
| 01 | 2012000003 | 22.09.12 | JZ | | | 2 Bl. |
| Index | Änderung/Description | Datum/Date | Name | Ers. f./Replacement for: | | |

X-ON Electronics

Largest Supplier of Electrical and Electronic Components

Click to view similar products for [Circular DIN Connectors](#) category:

Click to view products by [Amphenol](#) manufacturer:

Other Similar products are found below :

[60KD4M](#) [M83723/76W22326](#) [M83723/78R22327](#) [D38999/24WJ29PA](#) [D38999/26FE99SN L/C](#) [75-069228-21J](#) [75-474014-07L](#) [88-559975-75P](#) [8R3006A18M0033](#) [PT02E1283P](#) [GTC00G-24-7S](#) [PT05A-14-5SX](#) [PT05A1832SW](#) [PT05E2255PW](#) [PT05SE1832SWLC](#) [PT05SE1832SYLC](#) [GTC030-20-27PW-LC](#) [GTC030A-20-33S](#) [PT06SE1811SXLC](#) [1211290078](#) [1211810025](#) [1210120122](#) [ACC06AF-20-23P\(003\)](#) [1210503216](#) [1211290084](#) [1211500027](#) [ACS06AF-16-10P\(003\)](#) [D38999/40FB35AN](#) [D38999/40FB35BB](#) [D38999/40WB35BN](#) [D38999/40WD35PN](#) [D38999/40WJ29SN-L/C](#) [D38999/40WJ4BN](#) [D38999/42FB35BN](#) [D38999/42WB35AB](#) [D38999/42WB35PB-L/C](#) [D38999/42WJ19AN](#) [D38999/42WJ24PN-L/C](#) [D38999/44WB35AN](#) [D38999/44WH21AN](#) [D38999/44WH35AN](#) [D38999/44WJ29BA](#) [D38999/44WJ35PN](#) [D38999/44WJ61BA](#) [D38999/46FB35AC](#) [D38999/46FB35BN](#) [D38999/46FB35SA-L/C](#) [D38999/46FB99BA](#) [D38999/46FB99BN](#) [D38999/46FJ19SA-L/C](#)