

T812

X

XX

XX

XX

CEU

IDC Socket  
2.54mm pitch



Housing Color

0: Grey  
1: Black

No of Positions

06= 6 Positions  
:  
:  
64=64 Positions

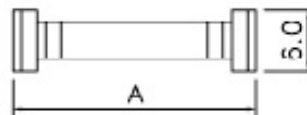
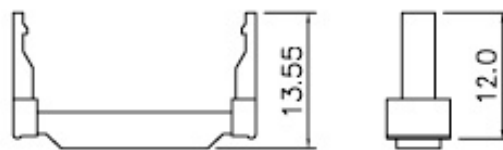
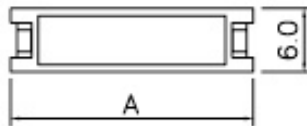
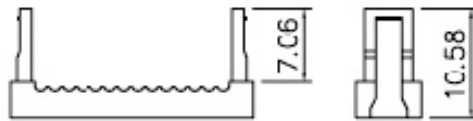
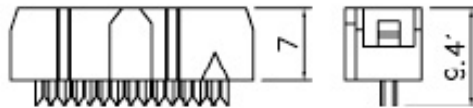
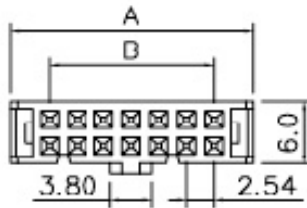
Plating Options

A1: Flash Gold  
A2: 15u" selective gold  
A3: 30u" selective Gold  
SN: Tin

Variation Code

00: w/o Strain Relief  
01: With Strain Relief

Fixed index



Strain Relief

position	A	B
6	12.16	5.08
8	14.78	7.62
10	17.27	10.16
12	19.85	12.70
14	22.40	15.24
16	24.94	17.78
20	30.00	22.86
24	35.10	27.94
26	37.59	30.48
30	42.66	35.56
34	47.80	40.64
36	50.29	43.18
40	55.37	48.26
44	60.56	53.34
50	68.18	60.96
56	75.74	68.58
60	80.80	73.66
62	83.35	76.20
64	85.90	78.74

General Specification

Materials and Finish :

**Insulator:** Glass-reinforce thermoplastic, UL 94V-0, PBT.  
**Contact :** Phosphor Bronze, plated with full flash gold or selected gold in mating area; 100u" min. full tin on the termination area, with entire contact under-plated 50u" min. nickel.

Electrical :

**Contact Resistance:** 20 mΩ max. at 1A DC.  
**Insulation Resistance:** 1000 MΩ min, at 500 VDC.  
**Dielectric Withstanding Voltage :** 500 VAC/RMS 60Hz for one minute.  
**Current Rating :** 3A per contact  
**Voltage Rating :** 250VAC/RMS 60Hz

Envirement :

**Operating Temperature:**  
-40degree C to +105 degree C

## X-ON Electronics

Largest Supplier of Electrical and Electronic Components

*Click to view similar products for [I/O Connectors](#) category:*

*Click to view products by [Amphenol](#) manufacturer:*

Other Similar products are found below :

[571763P](#) [58098-0628](#) [61-168618-12P](#) [D38999/20FJ24PA L/C](#) [D38999/20FJ29SB L/C](#) [D38999/24FG11SN L/C](#) [72.250.1628.2](#) [72.250.2428.2](#)  
[74720-0505](#) [76.350.0729.0](#) [76871-1403](#) [FCN-244F080-G/1](#) [FCN-260A9920](#) [FCN-268D024-G/2F#10X-R10](#) [MP-5T180MUNNA-005](#) [MP-5XRJ45UNNB-003](#) [PCS-E50FA](#) [PCS-XE26LKA](#) [PCS-XE26MA+](#) [PCS-XES68MS+](#) [G38A71314B](#) [91-569719-35R](#) [9776-18-6](#) [DX40-50P\(55\)](#) [1571250010](#) [157-22500-3](#) [MS3476W12-10S L/C](#) [1888020-8](#) [91-569786-35H](#) [91-569786-35M](#) [91-644626-35P](#) [172501-4002](#)  
[172501-6002](#) [FCN-260C008-A/L0](#) [FCN-260C024-AL0](#) [FCN-261Z008](#) [FCN-268D008-G/1K](#) [2000314-1](#) [200331-1](#) [2007498-2](#) [PCR-E28LMDAG1+](#) [PCR-E36FC+](#) [PCS-E28FS+](#) [PCS-XE26SLFD+](#) [PCS-XE26SLFDT+](#) [G38A71214B](#) [HDRA-E68W1LFDTC-SL+](#) [HDR-E14MSG1+](#) [R88A-CNK81S](#) [CRT1-ATT02](#)