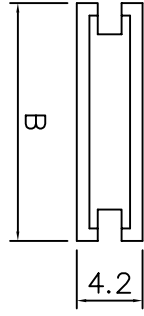
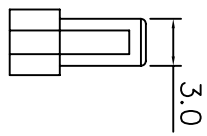
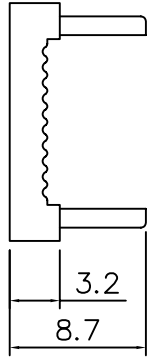
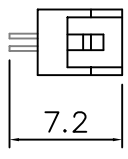
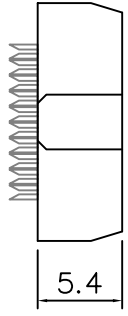
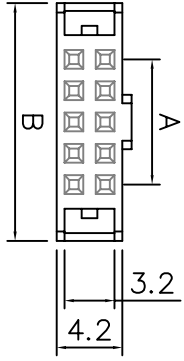


This document is the property of Amphenol Corporation and is delivered on the express condition that it is not to be disclosed, reproduced or used, in whole or in part, for the manufacture or sale by anyone other than Amphenol Corporation without its prior consent, and that no right is granted to disclose or to use any information in this document.



Dimensions

Positions	A	B
06	4.0	11.20
08	6.0	13.20
10	8.0	15.20
12	10.0	17.20
14	12.0	19.20
16	14.0	21.20

Positions	A	B
18	16.0	23.20
20	18.0	25.20
22	20.0	27.20
24	22.0	29.20
26	24.0	31.20
28	26.0	33.20

Positions	A	B
30	28.0	35.20
32	30.0	37.20
34	32.0	39.20
38	36.0	43.20
40	38.0	45.20
44	42.0	49.20

Positions	A	B
50	48.0	55.20
60	58.0	65.20
62	60.0	67.20
64	62.0	69.20
68	66.0	73.20

Product Specification

Material

Insulator :Glass-Filled Thermoplastic
PBT, UL94V-0 rates

Contact :Brass or Phosphor Bronze
Plated full gold or selected gold in
mating area, 100u" min. tin plated
on termination area, with entire contact
under-plated 50u" min. Nickel

Electrical

Contact Resistance :20 milliohms
Max at 1 AMP DC.
Insulation Resistance :5000
megohms at 500 VDC
Dielectric Withstanding Voltage :
250 VAC/rms 60HZ for 1 minute
Current Rating :3 AMP
Voltage Rating :250 VAC/rms 60HZ

T826 X XX XX XX C EU

IDC Socket:
2.00mm Pitch

Housing Color

- 0: Grey w CPK
 - 1: Black w CPK
 - 2: Grey w/o CPK
 - 3: Black w/o CPK
- CPK=Central Polarization Key

No of Positions:
06: 6 positions
:
:
:
68: 68 positions

Plating Options:
A1: Flash Gold
A2: 15u"/0.4um Gold
A3: 30u"/0.8um Gold
SN:Tin

EU: RoHS
Compliant

Variation Code:
00: W/O Strain Relief
01: With Strain Relief



TOLERANCE (mm)	APPROVALS	DATE	TITLE
X. ±0.3	GRANTED Roger	24/Nov/2006	IDC Socket
X.X ±0.2	CHECKED Rob K.	27/Nov/2006	
X.XX ±0.15	APPROVED Rob K.	28/Nov/2006	

UNLESS OTHERWISE SPECIFIED	UNITS: mm	SIZE: A4	DRAWING N°: T826 Series	REV: A
----------------------------	-----------	----------	-------------------------	--------

AMPHENOL
Amphenol European
Design Center

Scale N.A. Sheet 1 of 1

X-ON Electronics

Largest Supplier of Electrical and Electronic Components

Click to view similar products for [Circular MIL Spec Connector](#) category:

Click to view products by [Amphenol](#) manufacturer:

Other Similar products are found below :

[89075GULPR](#) [0025-262-542](#) [0025-263-3014](#) [0025-264-3014](#) [0031-065-002](#) [0031-071-002](#) [0134-201-1007](#) [0134-202-0800](#) [0134-202-1200](#)
[0134-202-2407](#) [0134-207-1206](#) [0134-207-1800](#) [0134-207-2207](#) [0134-213-0806](#) [0134-213-1007](#) [0134-213-1009](#) [0134-213-1200](#) [0134-213-1208](#) [0134-213-1800](#) [0134-213-2209](#) [0025-258-000](#) [0025-259-542](#) [0031-066-002](#) [0031-068-002](#) [0031-069-002](#) [0031-070-002](#) [0031-072-002](#)
[015-9516-002](#) [020313-0043](#) [020340-0009](#) [020418-0036](#) [020419-0080](#) [020419-0120](#) [020420-0108](#) [60-042022-07P](#) [60-042022-23P](#) [60-042217-10P](#) [60-042217-11P](#) [60-042722-19P](#) [0104-201-2402](#) [0114-201-1278](#) [024251-0015](#) [602GB06EG1832SN](#) [0134-201-1207](#) [0134-201-1410](#) [0134-201-1806](#) [0134-201-2006](#) [0134-201-2007](#) [0134-201-2010](#) [0134-201-2200](#)