

AMPHENOL PART NUMBER CONFIGURATION
U90 - A 1 X 1 - 1 X 0 X

HEAT SINK OPTION

- 0 = NO HEAT SINK OR CLIP SHIPPED, CLOSE TOP
- 1 = NO HEAT SINK OR CLIP SHIPPED, OPEN TOP
- 2 = STANDARD HEAT SINK (HARD COAT ANODIZED) AND CLIP (H=6.5mm; SAN HEIGHT)
- 3 = STANDARD HEAT SINK (HARD COAT ANODIZED) AND CLIP (H=4.2mm; PCI HEIGHT)
- 4 = STANDARD HEAT SINK (HARD COAT ANODIZED) AND CLIP (H=13.5mm; TALL)
- A = STANDARD HEAT SINK (NICKEL PLATED) AND CLIP (H=6.5mm; SAN HEIGHT)
- B = STANDARD HEAT SINK (NICKEL PLATED) AND CLIP (H=4.2mm; PCI HEIGHT)
- C = STANDARD HEAT SINK (NICKEL PLATED) AND CLIP (H=13.5mm; TALL)

NOTE: FOR PIN STYLE HEAT SINKS REFER TO DRAWING NUMBER: P-U90-H1X1-1XXX

PACKAGING

- 1 = TRAY PACKAGING W/ HEAT SINK IN SEPARATE TRAY
- A = TRAY PACKAGING W/ HEAT SINK ASSEMBLED
- T = TAPE AND REEL PACKAGING W/ HEAT SINK IN SEPARATE TRAY

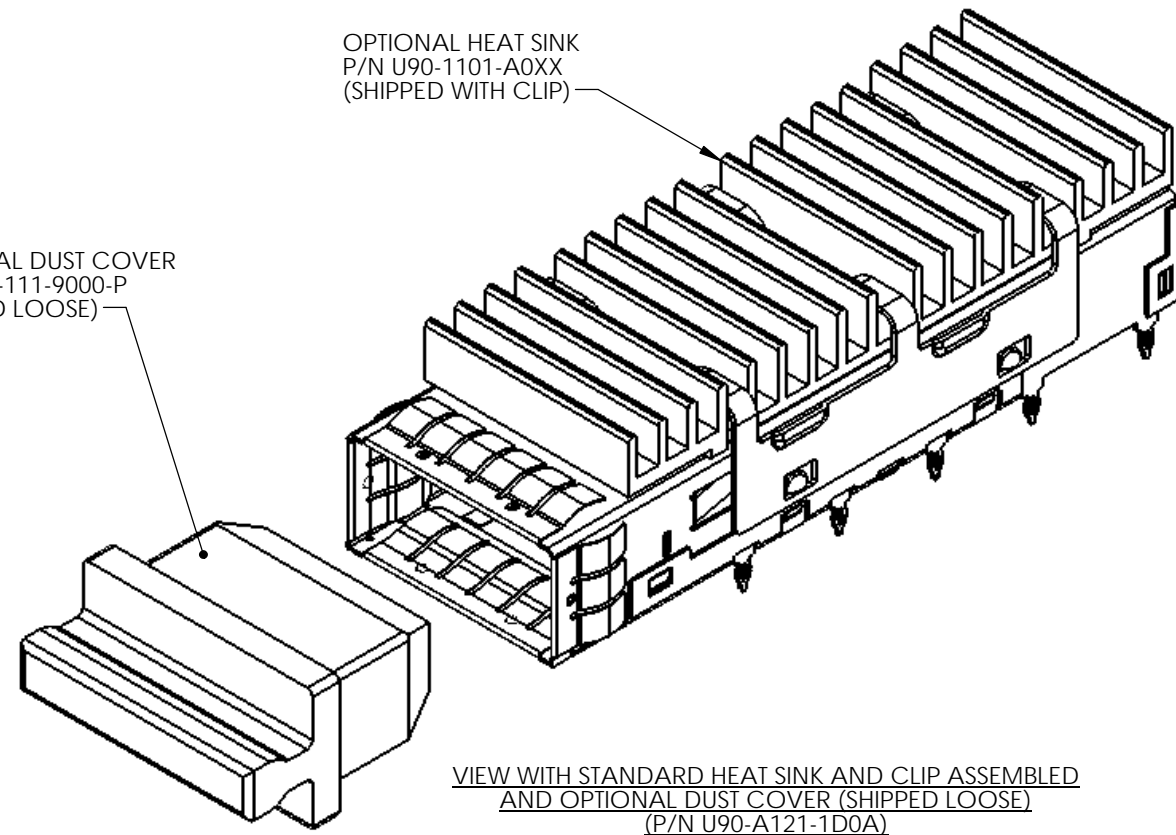
OPTIONAL DUST COVER

- 0 = WITHOUT DUST COVER
- D = WITH DUST COVER (SHIPPED LOOSE PIECE)

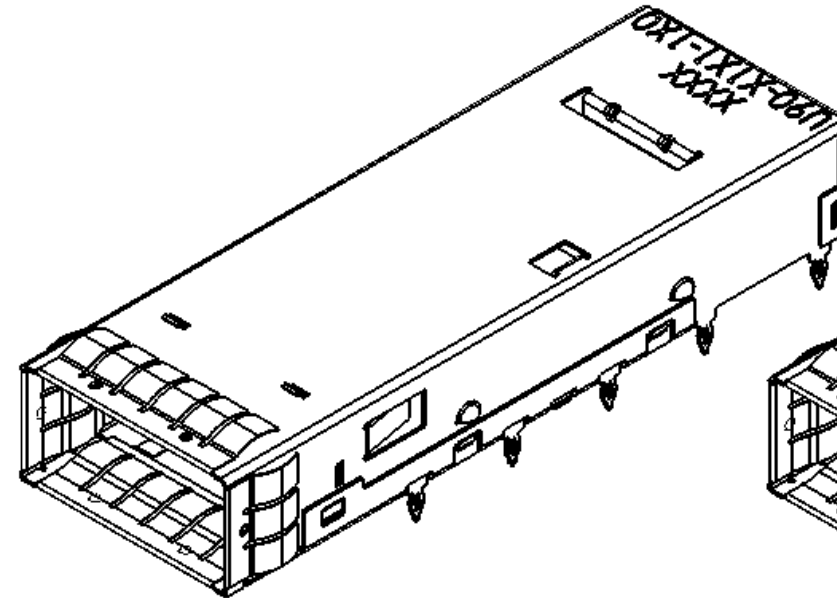
REVISIONS				
REV.	ECN	DESCRIPTION	DATE	APPROVED
F		NOTE ADDED "FOR PIN STYLE REFER TO U90-H1X1-1XXX"	JAN 12/09	ZLJ
G		REAR STOP MODIFIED	SEP 18/09	ZLJ
H		ADD PIN LENGTH DIMENSION 2.50	APR 10/13	ZLJ
J		NEW PART NUMBER U90-A101-1001 ADDED	OCT 06/13	ZLJ

OPTIONAL HEAT SINK
P/N U90-1101-A0XX
(SHIPPED WITH CLIP)

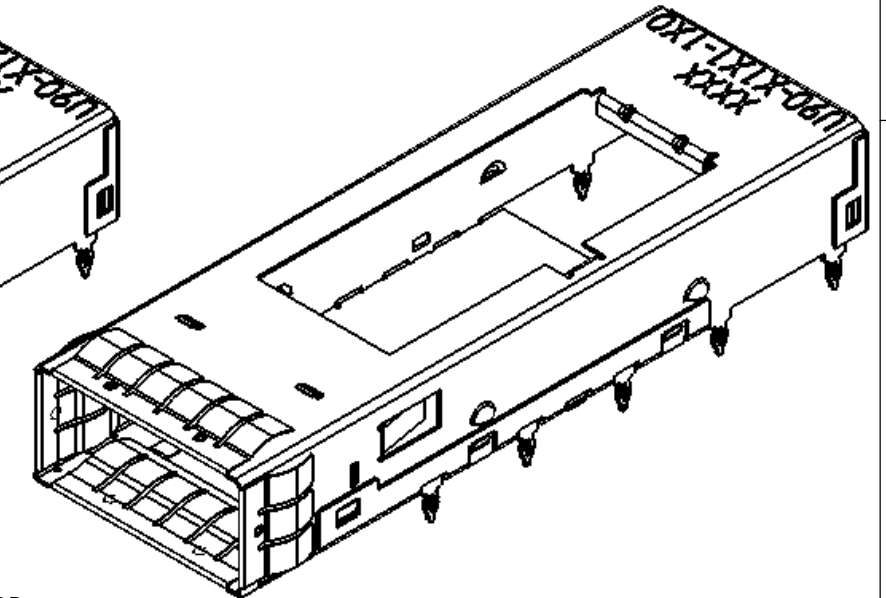
OPTIONAL DUST COVER
P/N U79-111-9000-P
(SHIPPED LOOSE)



VIEW WITH STANDARD HEAT SINK AND CLIP ASSEMBLED
AND OPTIONAL DUST COVER (SHIPPED LOOSE)
(P/N U90-A121-1D0A)



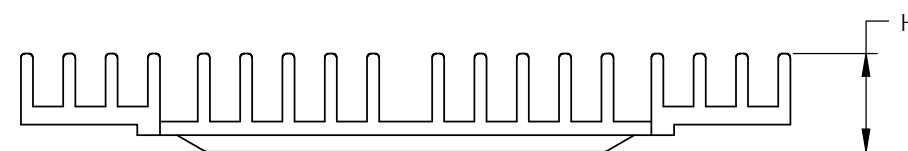
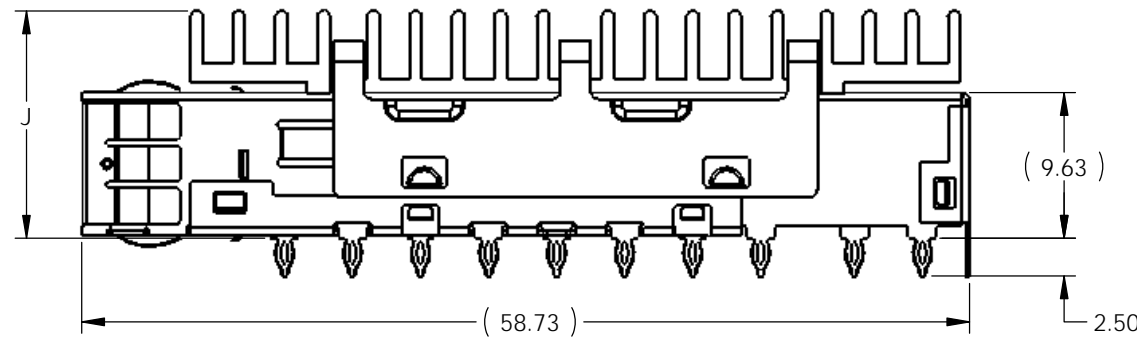
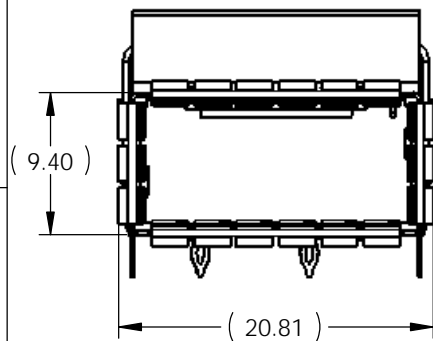
VIEW WITHOUT HEAT SINK AND CLIP, CLOSE TOP
(P/N U90-A101-100X)



VIEW WITHOUT HEAT SINK AND CLIP, OPEN TOP
(P/N U90-A111-100X)

NOTES:

- CAGE AND EMI SPRINGS MATERIAL: COPPER ALLOY
HEAT SINK CLIP MATERIAL: STEEL ALLOY
HEAT SINK MATERIAL: ALUMINUM
CAGE PLATING: 3.81µm [100µ"] MIN. NICKEL.
- CAGE IS INTENDED TO BE COMPLIANT WITH THE QUAD SMALL FORM-FACTOR PLUGGABLE (QSFP) TRANSCEIVER SPECIFICATION REVISION 1.0.
- HEAT SINK, HEAT SINK CLIP AND DUST COVER ARE SHIPPED LOOSE PIECE.



VIEW OF HEAT SINK

DO NOT SCALE DRAWING

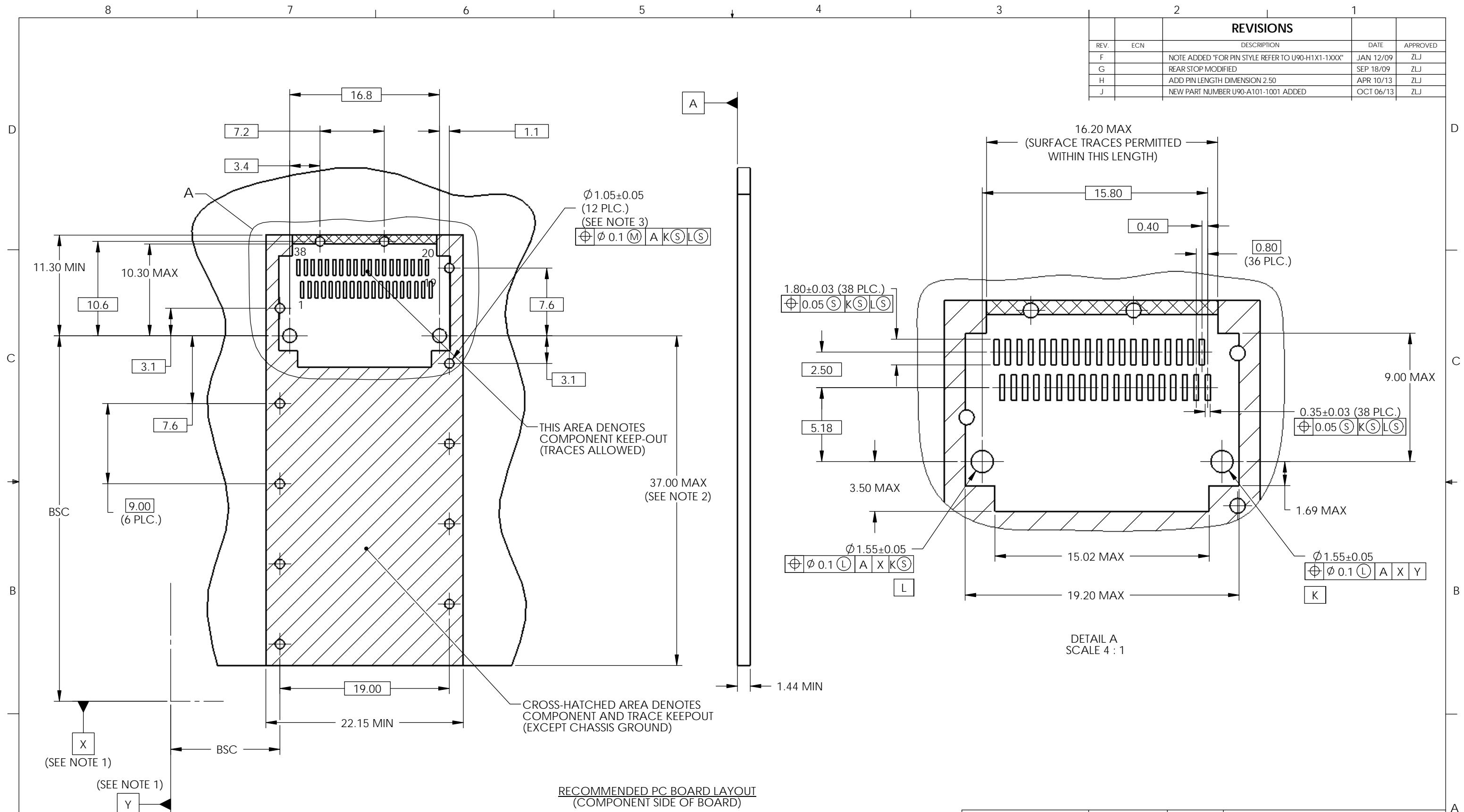
THIS DOCUMENT CONTAINS PROPRIETARY INFORMATION AND SUCH INFORMATION MAY NOT BE DISCLOSED TO OTHERS FOR ANY PURPOSE OR USED FOR MANUFACTURING PURPOSES WITHOUT PERMISSION FROM AMPHENOL CANADA CORP.



PART NUMBER	DIM "J"	DIM "H"	HEAT SINK & CLIP OPTION
U90-A121-1X0X	15.03	6.50	IF HEAT SINK AND CLIP ARE SHIPPED LOOSE SEE DRAWING P-U90-1101-AXX0-BP
U90-A131-1X0X	12.73	4.20	
U90-A141-1X0X	22.03	13.50	
U90-A1A1-1X0X	15.03	6.50	
U90-A1B1-1X0X	12.73	4.20	
U90-A1C1-1X0X	22.03	13.50	

UNLESS OTHERWISE SPECIFIED DIMENSIONS ARE IN MILLIMETERS TOLERANCES ARE:		APPROVALS		DATE		Amphenol High Speed Interconnects A Division of Amphenol Corp. www.amphenol-highspeed.com	
DECIMALS	ANGLES	DRAWN	M.LONG	DESIGNED	M.LONG	DEC04/06	TITLE
X.X ± 0.15	± 0.5°	CHECKED	J.SI	QA APP'D			OSFP CAGE ASSEMBLY
X.XX ± 0.10		IE APP'D					
MATERIAL AND FINISH	SEE NOTE 1	DWG APP'D	A.GREEN	DEC04/06	SCALE	2:1	PROJECT
REF.		SIZE	A3	DWG. NO.	P-U90-A1X1-1X0X	REV.	J
CODE IDENT. NO.	03554	SCALE	2:1	PROJECT		SHEET	1 OF 4

REVISIONS				
REV.	ECN	DESCRIPTION	DATE	APPROVED
F		NOTE ADDED *FOR PIN STYLE REFER TO U90-H1X1-1XXX*	JAN 12/09	ZLJ
G		REAR STOP MODIFIED	SEP 18/09	ZLJ
H		ADD PIN LENGTH DIMENSION 2.50	APR 10/13	ZLJ
J		NEW PART NUMBER U90-A101-1001 ADDED	OCT 06/13	ZLJ



RECOMMENDED PC BOARD LAYOUT
(COMPONENT SIDE OF BOARD)

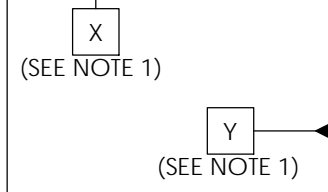
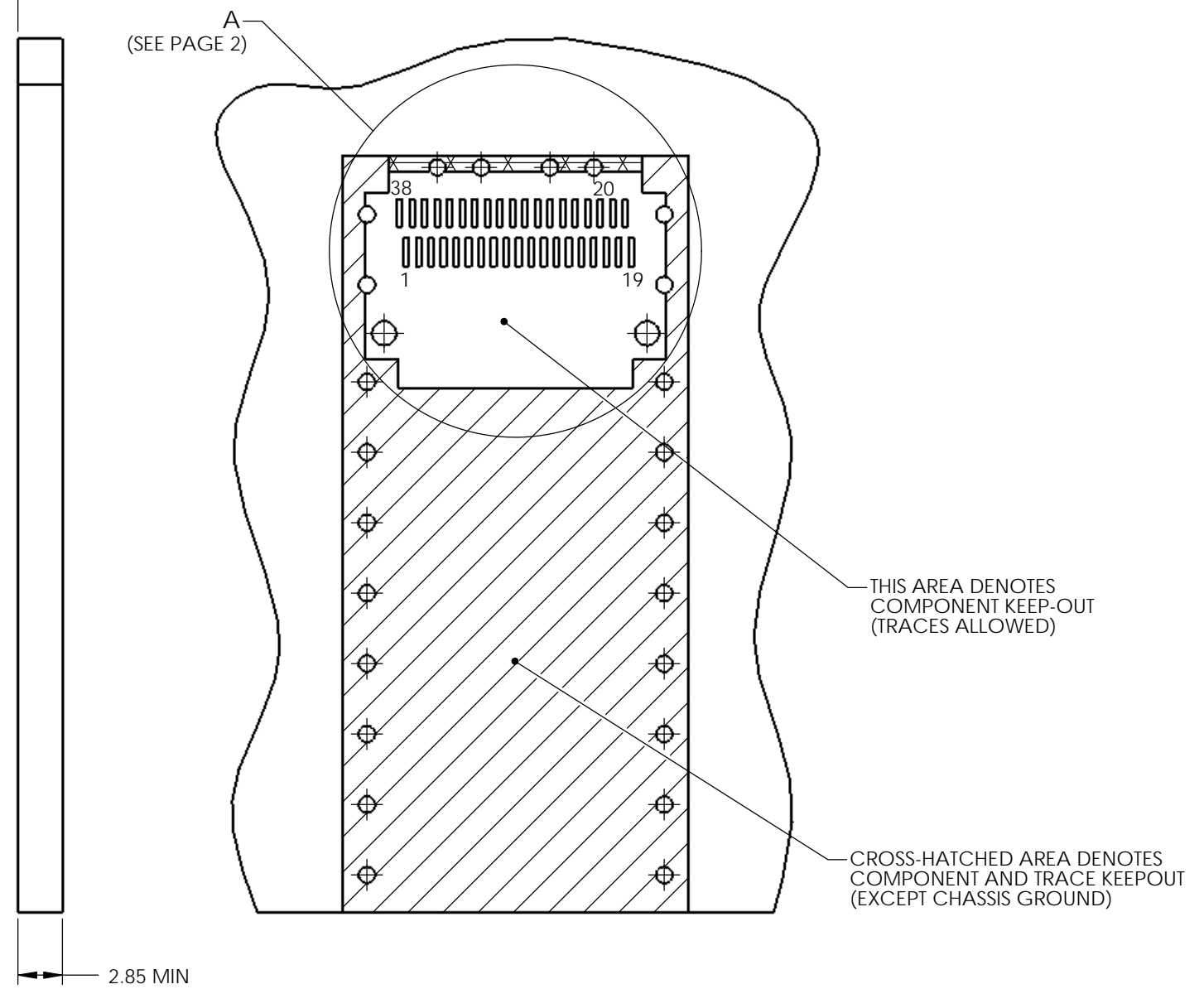
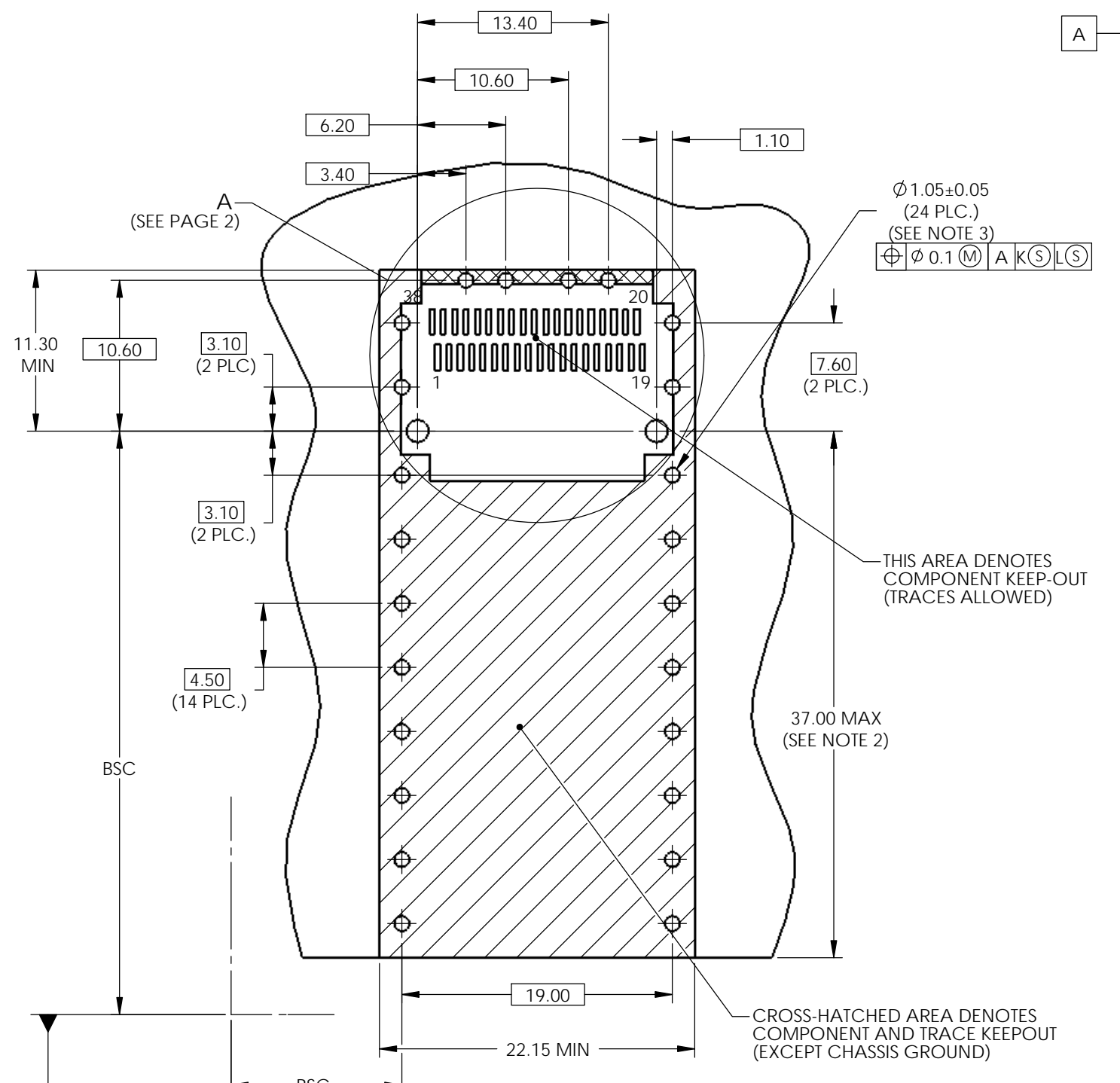
- NOTES:
- DATUMS X AND Y ESTABLISHED BY CUSTOMER'S FUDUCIAL.
 - LOCATION OF EDGE OF PCB IS APPLICATION SPECIFIC.
 - FINISHED HOLE SIZE.

DO NOT SCALE DRAWING

THIS DOCUMENT CONTAINS PROPRIETARY INFORMATION AND SUCH INFORMATION MAY NOT BE DISCLOSED TO OTHERS FOR ANY PURPOSE OR USED FOR MANUFACTURING PUPOSES WITHOUT PERMISSION FROM AMPHENOL CANADA CORP.

UNLESS OTHERWISE SPECIFIED DIMENSIONS ARE IN MILLIMETERS TOLERANCES ARE: DECIMALS ANGLES X.X ± 0.15 ± 0.5° X.XX ± 0.10	APPROVALS	DATE	Amphenol High Speed Interconnects <small>A Division of Amphenol Corp. www.amphenol-highspeed.com</small>	
	DRAWN M.LONG	DEC04/06		
	DESIGNED M.LONG	DEC04/06		
	CHECKED J.SI	DEC04/06		
MATERIAL AND FINISH SEE NOTE 1	QA APPD		TITLE QSFP CAGE ASSEMBLY	
REF.	IE APPD			
CODE IDENT. NO. 03554	DWG APPD A.GREEN	DEC04/06		
	SIZE A3	DWG. NO. P-U90-A1X1-1X0X	REV. J	
	SCALE 5:2	PROJECT	SHEET 2 OF 4	

REVISIONS				
REV.	ECN	DESCRIPTION	DATE	APPROVED
F		NOTE ADDED "FOR PIN STYLE REFER TO U90-H1X1-1XXX"	JAN 12/09	ZLJ
G		REAR STOP MODIFIED	SEP 18/09	ZLJ
H		ADD PIN LENGTH DIMENSION 2.50	APR 10/13	ZLJ
J		NEW PART NUMBER U90-A101-1001 ADDED	OCT 06/13	ZLJ



RECOMMENDED BELLY-TO-BELLY PCB BOARD LAYOUT
(COMPONENT SIDE OF BOARD)

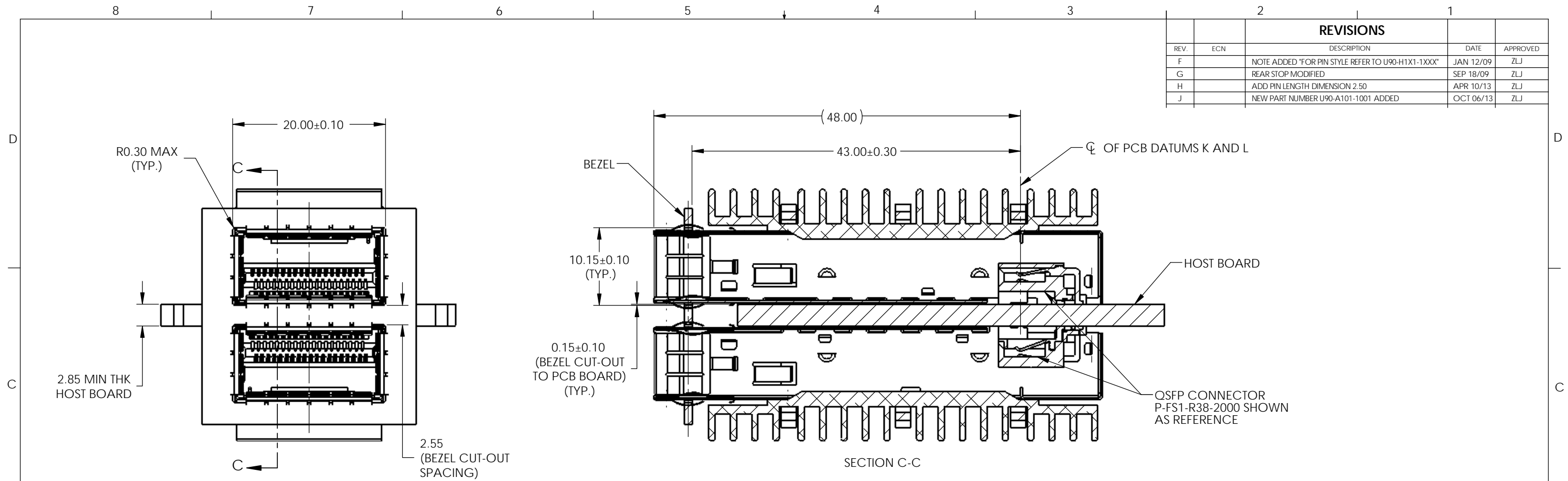
- NOTES:
- DATUMS X AND Y ESTABLISHED BY CUSTOMER'S FUDUCIAL.
 - LOCATION OF EDGE OF PCB IS APPLICATION SPECIFIC.
 - FINISHED HOLE SIZE.

DO NOT SCALE DRAWING

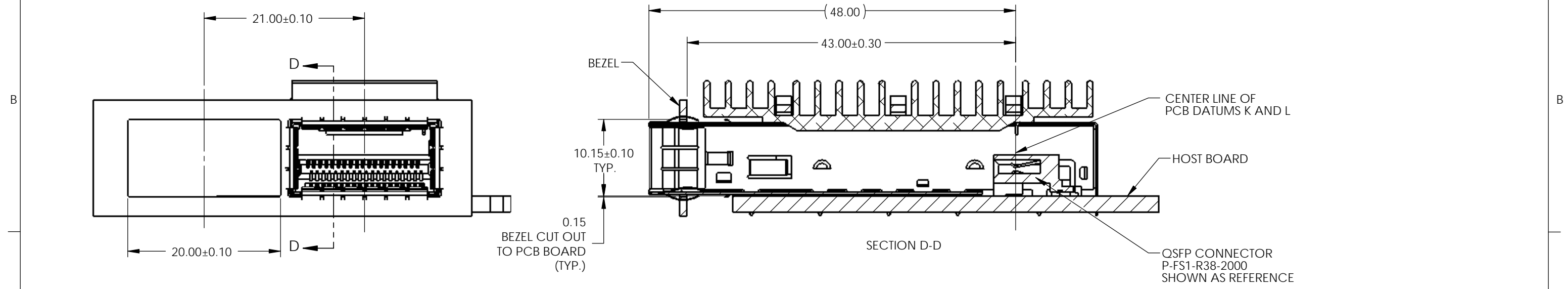
THIS DOCUMENT CONTAINS PROPRIETARY INFORMATION AND SUCH INFORMATION MAY NOT BE DISCLOSED TO OTHERS FOR ANY PURPOSE OR USED FOR MANUFACTURING PUPOSES WITHOUT PERMISSION FROM AMPHENOL CANADA CORP.

UNLESS OTHERWISE SPECIFIED DIMENSIONS ARE IN MILLIMETERS TOLERANCES ARE:		APPROVALS		DATE		Amphenol High Speed Interconnects <small>A Division of Amphenol Corp. www.amphenol-highspeed.com</small>	
DECIMALS	ANGLES	DRAWN	M.LONG	DEC04/06	TITLE QSFP CAGE ASSEMBLY		
X.X ± 0.15	± 0.5°	DESIGNED	M.LONG	DEC04/06			
X.XX ± 0.10		CHECKED	J.SI	DEC04/06			
MATERIAL AND FINISH		QA APPD					
SEE NOTE 1		IE APPD			SIZE	DWG. NO	P-U90-A1X1-1X0X
REF.		DWG APPD	A.GREEN	DEC04/06	SCALE	5:2	PROJECT
CODE IDENT. NO.	03554						SHEET 3 OF 4

REVISIONS				
REV.	ECN	DESCRIPTION	DATE	APPROVED
F		NOTE ADDED "FOR PIN STYLE REFER TO U90-H1X1-1XXX"	JAN 12/09	ZLJ
G		REAR STOP MODIFIED	SEP 18/09	ZLJ
H		ADD PIN LENGTH DIMENSION 2.50	APR 10/13	ZLJ
J		NEW PART NUMBER U90-A101-1001 ADDED	OCT 06/13	ZLJ



RECOMMENDED BELLY-TO-BELLY MOUNTING DESIGN



RECOMMENDED SINGLE SIDED MOUNTING DESIGN

DO NOT SCALE DRAWING

THIS DOCUMENT CONTAINS PROPRIETARY INFORMATION AND SUCH INFORMATION MAY NOT BE DISCLOSED TO OTHERS FOR ANY PURPOSE OR USED FOR MANUFACTURING PUPOSES WITHOUT PERMISSION FROM AMPHENOL CANADA CORP.

UNLESS OTHERWISE SPECIFIED DIMENSIONS ARE IN MILLIMETERS TOLERANCES ARE:		APPROVALS		DATE	Amphenol High Speed Interconnects <small>A Division of Amphenol Corp. www.amphenol-highspeed.com</small>	
DECIMALS	ANGLES	DRAWN	M.LONG	DEC04/06	OSFP CAGE ASSEMBLY	
X.X ± 0.15	± 0.5°	DESIGNED	M.LONG	DEC04/06		
X.XX ± 0.10		CHECKED	J.SI	DEC04/06		
MATERIAL AND FINISH		QA APPD				
SEE NOTE 1		IE APPD			SIZE	A3
REF.		DWG APPD	A.GREEN	DEC04/06	DWG. NO	P-U90-A1X1-1X0X
CODE IDENT. NO.	03554	SCALE	2:1	PROJECT		REV. J
					SHEET	4 OF 4

X-ON Electronics

Largest Supplier of Electrical and Electronic Components

Click to view similar products for [Amphenol manufacturer](#):

Other Similar products are found below :

[000-10400](#) [000-1075](#) [000-11050](#) [000-14000](#) [000-15875](#) [000-16050](#) [000-16075](#) [000-16750](#) [000-18225](#) [000-18750](#) [000-21900](#) [000-27000](#)
[000-27025](#) [000-27075](#) [000-27975](#) [000-28000](#) [000-28175](#) [000-2900](#) [000-29100](#) [000-32225](#) [000-34000](#) [000-34025](#) [000-34025-RFX](#) [000-34125](#) [000-34450](#) [000-34475](#) [000-34525](#) [000-35275](#) [000-35650-51](#) [000-35650-75](#) [000-35725-75](#) [000-36650-3RFX](#) [000-36775](#) [000-36800](#)
[000-36800-RFX](#) [000-36825](#) [000-36875](#) [000-4400](#) [000-4500](#) [000-46650-51](#) [000-46650-51RFX](#) [000-46650-75RFX](#) [000-46650-93RFX](#) [000-47000](#) [000-4700-51](#) [000-47025](#) [000-49000](#) [000-49000-RFX](#) [000-5275](#) [000-53100](#)