

**U92 - M411 - 1X01 - ZX**

**OPTIONAL DUST COVER**

- 0** - NO DUST COVER
- D** - WITH DUST COVER (SHIPPED BULK IN SAME BOX WITH CAGE & CONNECTOR ASSEMBLY)

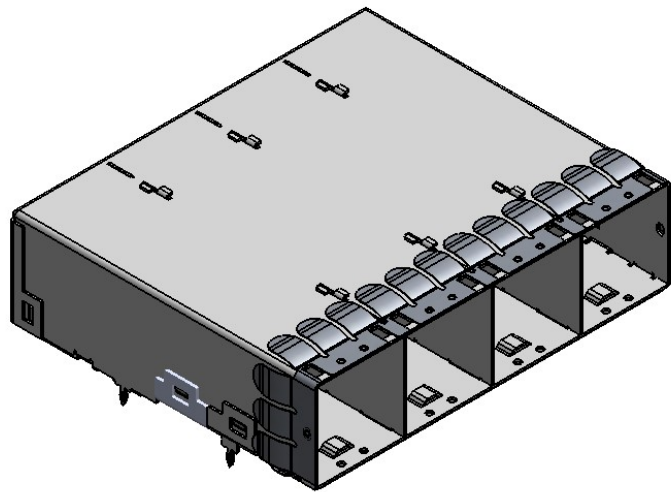
**MOUNTING SCREWS**

- 0** - NO MOUNTING SCREWS SHIPPED
- 1** - WITH MOUNTING SCREWS M2 X 04 - 4.3 MM LONG SHIPPED BULK IN SAME TRAY WITH CAGE ASSEMBLIES
- 2** - WITH MOUNTING SCREWS M2 X 04 - 3.6 MM LONG SHIPPED BULK IN SAME TRAY WITH CAGE ASSEMBLIES

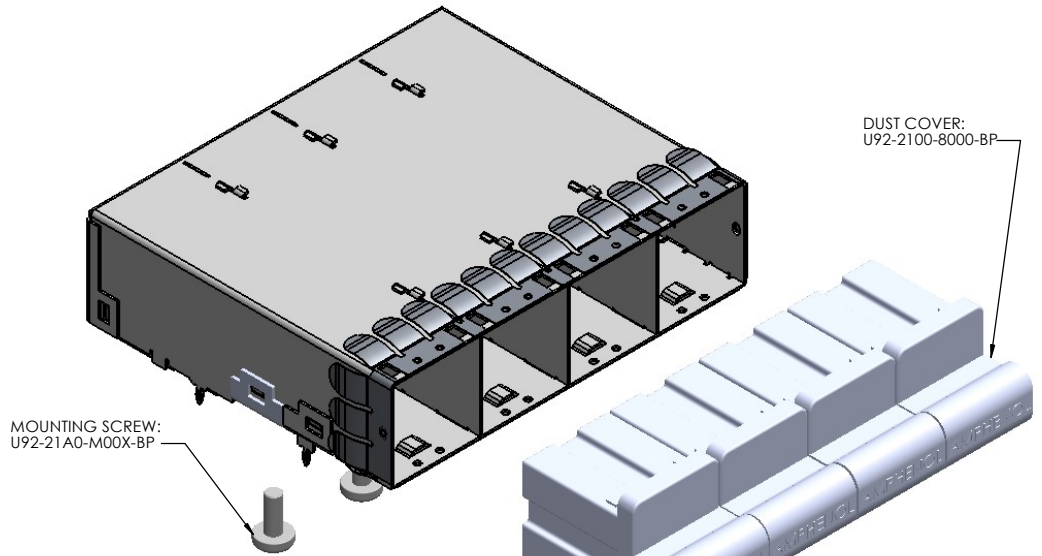
**CONTACT PLATING**

MATING AREA PLATING: 0.76 µm GOLD OVER 1.27 µm TO 3.81 µm OF NICKEL  
 PRESS FIT TAIL AREA PLATING: 0.381 µm TO 1.52 µm OF MATTE TIN OVER 1.27 µm TO 3.81µm OF NICKEL  
**(RoHS COMPLIANT PER RoHS DIRECTIVE 2011/65/EU)**

REVISIONS			
REV.	DESCRIPTION	DATE	APPROVED
A	PROPOSAL	OCT. 19/16	J.SI
B	CHANGED TO MEET THE SAS-4/PCIe-4	JUL. 12/17	J.SI
C	CORRECTED THE "DIM. A" IN PAGE 4	MAY. 9/18	J.SI
D	ADD KEEP OUT AREA IN THE FOOTPRINT	JUL. 6/18	J.SI
E	ADD NEW OPTION OF MOUNTING SCREW	MAY.13/22	J.SI



PART # **U92-M411-1001-70** SHOWN  
 (CAGE & CONNECTOR ASSEMBLY WITH NO SCREWS AND NO DUST COVER SHIPPED)



MOUNTING SCREW:  
 U92-21A0-M00X-BP

PART # **U92-M411-1D01-71** SHOWN  
 (CAGE & CONNECTOR ASSEMBLY WITH SCREWS AND DUST COVER SHIPPED BULK)

DUST COVER:  
 U92-2100-8000-BP

NOTES:

1) MATERIAL

- MAIN CAGE: PHOSPHOR BRONZE WITH NICKEL PLATING
- EMI FINGERS: PHOSPHOR BRONZE WITH NICKEL PLATING
- MOUNTING SCREW: AISI 1010 STEEL
- CONNECTOR HOUSING: LCP
- CONTACTS: PHOSPHOR BRONZE, FOR PLATING INFO. SEE PART NUMBER CONFIGURATION FOR OPTIONS.

2) PACKAGING:

- TRAY PACKAGING



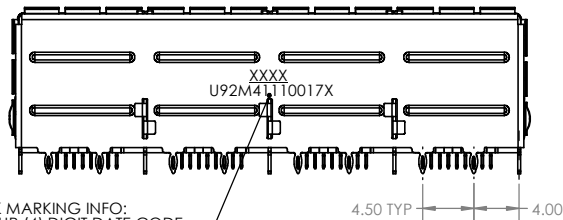
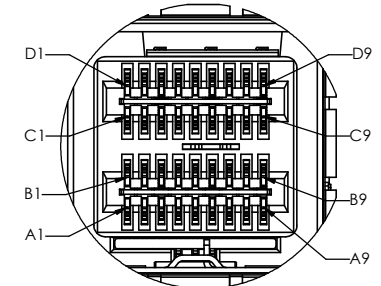
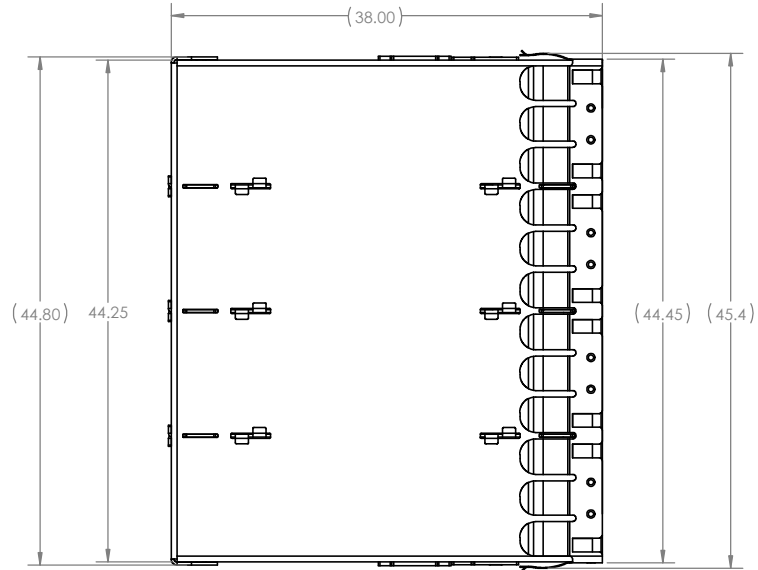
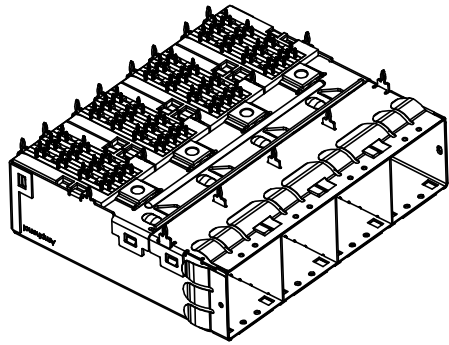
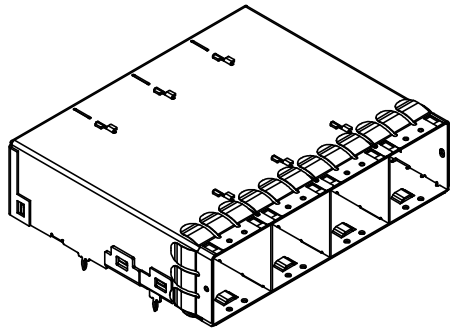
UNLESS OTHERWISE SPECIFIED:  
 DIMENSIONS ARE IN MILLIMETERS  
 TOLERANCES ARE:

DECIMALS	ANGLES
.X ±0.25	X° ±1°
.XX ±0.13	X.X° ±0.5°

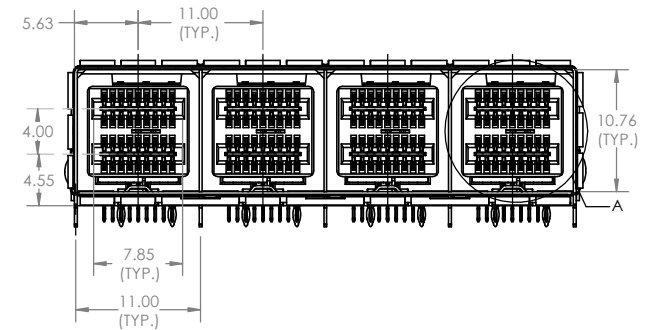
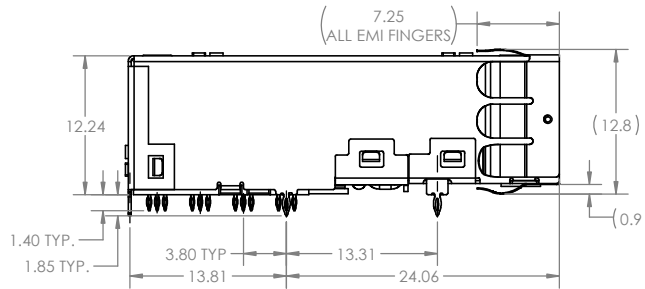
APPROVAL	DATE
DRAWN: Mike.H	OCT 19/16
CHECKED: Chigow.X	OCT 19/16
QA APPR:	
ME APPR:	
DWG APPR: J.SI	OCT 19/16
ENG. REL. NO.	
NSCM:	

**Amphenol High Speed Interconnects**  
 A Division of Amphenol Corp. www.amphenol-highspeed.com

**24GBPS - 16X MINI SAS HD  
 CAGE AND CONNECTOR  
 4 PORT ASSEMBLY  
 WITH LONG EMI FINGERS**



INK MARKING INFO:  
FOUR (4) DIGIT DATE CODE  
AND PART NUMBER



UNLESS OTHERWISE SPECIFIED:  
DIMENSIONS ARE IN MILLIMETERS  
TOLERANCES ARE:

DECIMALS ANGLES  
.X ±0.25 X° ±1°  
.XX ±0.13 X.X° ±0.5°



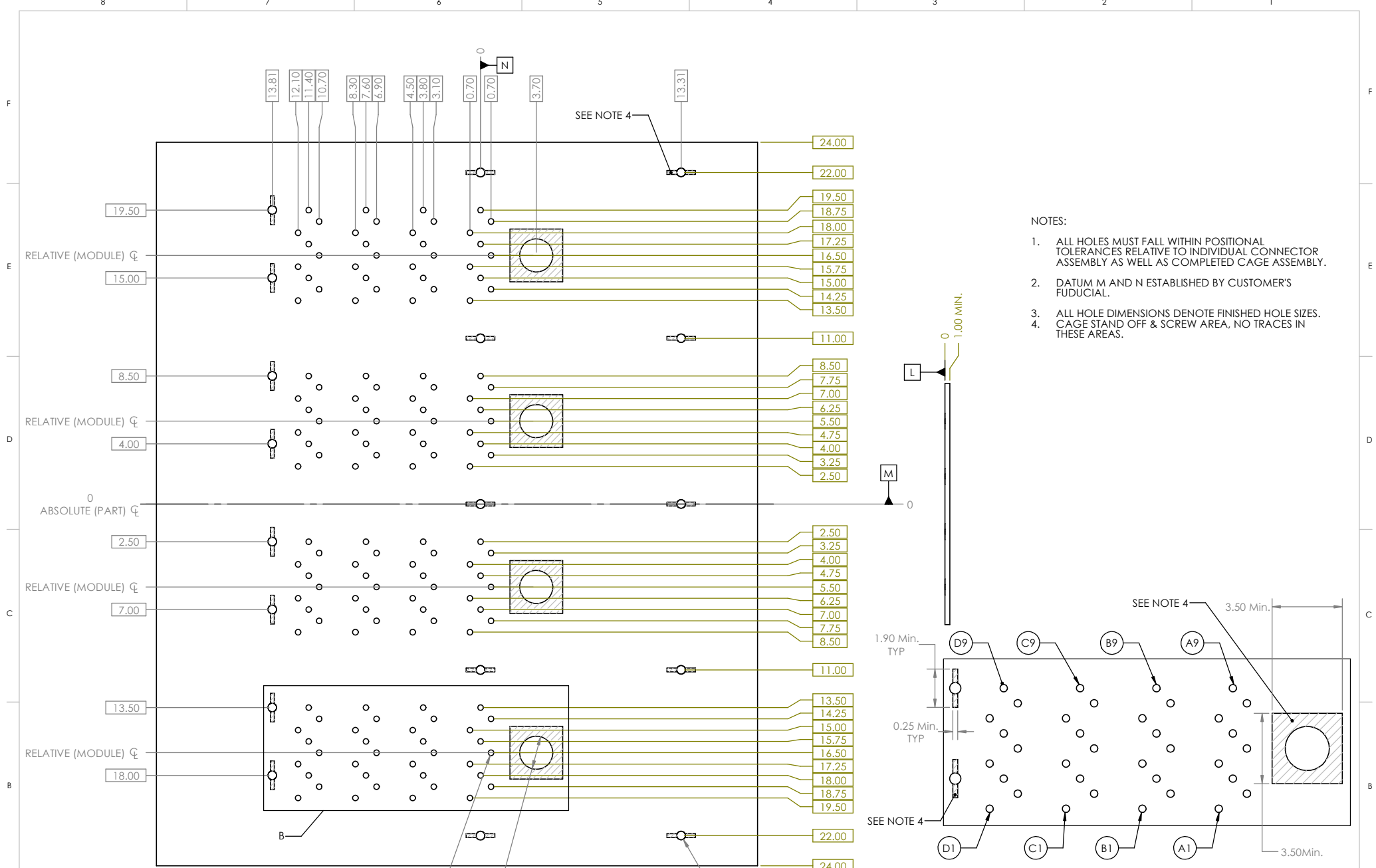
DO NOT SCALE DRAWING

APPROVAL	DATE
DRAWN: Mike.H	OCT 19/16
CHECKED: Chigow.X	OCT 19/16
QA APPR:	
ME APPR:	
DWG APPR: J.SI	OCT 19/16
ENG. REL. NO.	
NSCM:	

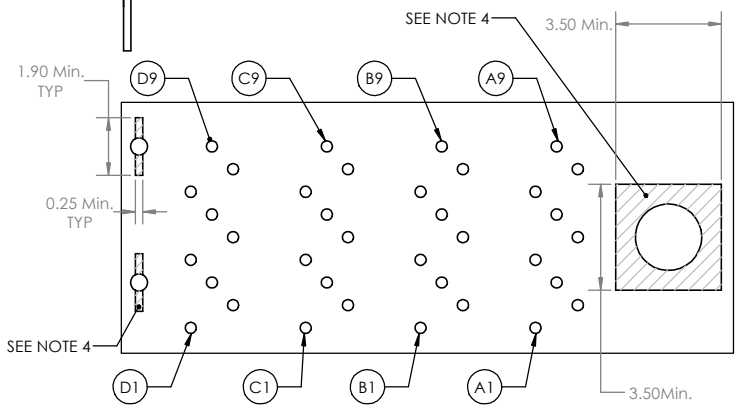
**Amphenol High Speed Interconnects**  
A Division of Amphenol Corp. www.amphenol-highspeed.com

**24GBPS - 16X MINI SAS HD  
CAGE AND CONNECTOR  
4 PORT ASSEMBLY  
WITH LONG EMI FINGERS**

SIZE	DWG. NO.	REV
	P-U92-M411-1X01-7X	E
SCALE: 2:1	PROJECT: HD	SHEET 2 OF 4



- NOTES:
1. ALL HOLES MUST FALL WITHIN POSITIONAL TOLERANCES RELATIVE TO INDIVIDUAL CONNECTOR ASSEMBLY AS WELL AS COMPLETED CAGE ASSEMBLY.
  2. DATUM M AND N ESTABLISHED BY CUSTOMER'S FUDICIAL.
  3. ALL HOLE DIMENSIONS DENOTE FINISHED HOLE SIZES. CAGE STAND OFF & SCREW AREA, NO TRACES IN THESE AREAS.
  - 4.

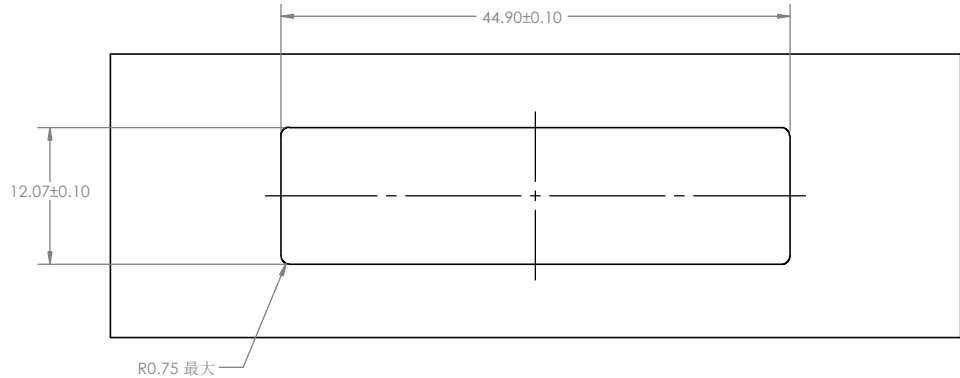


$\text{M}$	$\text{L}$	$\text{M}$	$\text{N}$
144 X $\phi 0.37 \pm 0.05$			
$\text{REL. C}$ (SEE NOTE 1)			
$\text{M}$	$\text{L}$	$\text{M}$	$\text{N}$
4 X $\phi 2.20$			
$\text{REL. C}$ (SEE NOTE 1)			
$\text{M}$	$\text{L}$	$\text{M}$	$\text{N}$
18 X $\phi 0.57 \pm 0.05$			
$\text{REL. C}$ (SEE NOTE 1)			

RECOMMENDED 4 PORT MOUNT  
PCB LAYOUT  
COMPONENT SIDE SHOWN

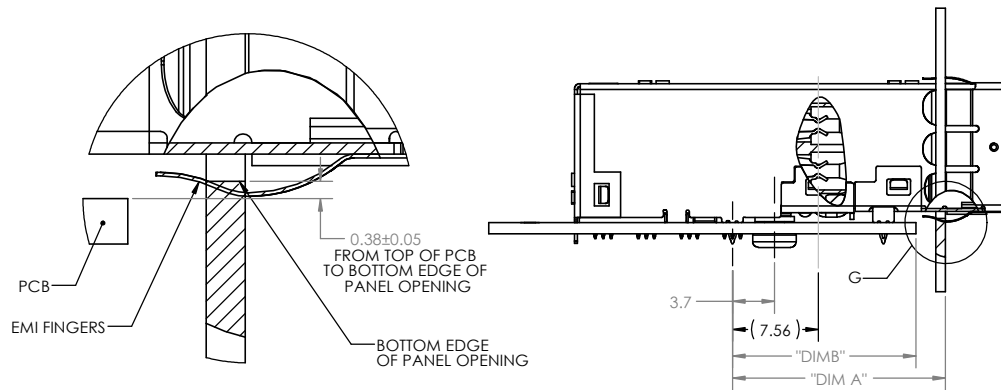
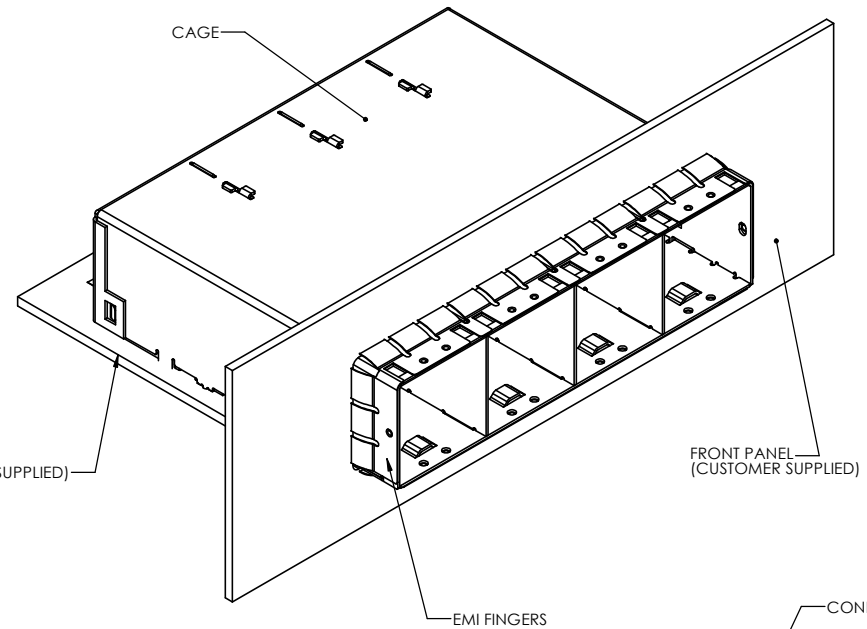
UNLESS OTHERWISE SPECIFIED: DIMENSIONS ARE IN MILLIMETERS TOLERANCES ARE:		APPROVAL	DATE
DRAWN	Mike.H	OCT 19/16	
CHECKED	Chigow.X	OCT 19/16	
QA APPR.			
ME APPR.			
DWG APPR.	J.SI	OCT 19/16	
DO NOT SCALE DRAWING		ENG. REL. NO.	
		NSCM:	

<b>Amphenol High Speed Interconnects</b> A Division of Amphenol Corp. www.amphenol-highspeed.com			
<b>24GBPS - 16X MINI SAS HD CAGE AND CONNECTOR 4 PORT ASSEMBLY WITH LONG EMI FINGERS</b>			
SIZE	DWG. NO.	P-U92-M411-1X01-7X	REV E
SCALE: 2:1	PROJECT: HD	SHEET 3 OF 4	

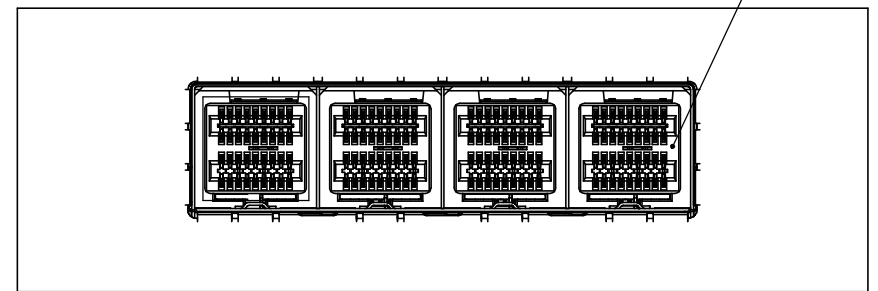


R0.75 最大

RECOMMENDED PANEL CUTOUT  
FOR **SINGLE LEVEL** MOUNTING



DETAIL G  
SCALE 12 : 1



APPLICATION	DIM A	DIM B
OTHER M/B BRACKET	20.08	18.19
PCI BRACKET	19.00	17.10

UNLESS OTHERWISE SPECIFIED:  
DIMENSIONS ARE IN MILLIMETERS  
TOLERANCES ARE:

DECIMALS .X ±0.25  
.XX ±0.13

ANGLES X° ±1°  
X.X° ±0.5°

APPROVAL	DATE
DRAWN: Mike.H	OCT 19/16
CHECKED: Chigow.X	OCT 19/16
QA APPR:	
ME APPR:	
DWG APPR: J.SI	OCT 19/16
ENG. REL. NO.	
NSCM:	

**Amphenol High Speed Interconnects**  
A Division of Amphenol Corp. www.amphenol-highspeed.com

**24GBPS - 16X MINI SAS HD  
CAGE AND CONNECTOR  
4 PORT ASSEMBLY  
WITH LONG EMI FINGERS**

DO NOT SCALE DRAWING

SIZE	DWG. NO.	REV
SCALE: 1:1	P-U92-M411-1X01-7X	E
PROJECT: HD	SHEET 4 OF 4	

## X-ON Electronics

Largest Supplier of Electrical and Electronic Components

*Click to view similar products for [I/O Connectors](#) category:*

*Click to view products by [Amphenol](#) manufacturer:*

Other Similar products are found below :

[571763P](#) [61-168618-12P](#) [D20419-211](#) [72.250.1628.2](#) [72.250.2428.2](#) [76.350.0729.0](#) [76871-1403](#) [PCR-E36PM](#) [PCS-XE26LKA](#) [PCS-XES68MS+](#) [G38A71314B](#) [9776-18-6](#) [DX40-50P\(55\)](#) [1571250010](#) [157-22500-3](#) [MS3471L14-19P L/C](#) [192991-0703](#) [91-569786-35H](#) [FCN-260C008-A/L0](#) [FCN-260C024-AL0](#) [FCN-261Z008](#) [2000314-1](#) [200331-1](#) [PCS-E28FS+](#) [PCS-XE26SLFD+](#) [PCS-XE26SLFDT+](#) [G730VID08BDC24](#) [HDMR-29-01-S-SM-TR](#) [HDRA-E68W1LFDTC-SL+](#) [54182-0605](#) [U90B2054081210](#) [UE86K842720321](#) [38113800006](#) [Z4.102.0680.0](#) [500-1040](#) [500-1052](#) [500-1054](#) [ZP-4008-66L](#) [DX40-20P\(55\)](#) [5554841-1](#) [SM3100F14S-12P](#) [SM3106F14S-7S-LC](#) [SM3106R18-18S](#) [U90B3054061110](#) [U65-E04-4020](#) [557-262M2-06C](#) [60-042222-02S](#) [10099439-003C-TRLF](#) [226-0348-000](#) [10137239-0021LF](#)