

**AMPHENOL PART NUMBER CONFIGURATION**

UE78 - L1126 - 00XX1

**PRESS FIT CONNECTOR PLATING**

3 = 30 μ" MIN. GOLD ON MATING AREA  
 150-300 μ" MATTE TIN ON TERMINATION  
 6 = 15 μ" MIN. GOLD ON MATING AREA  
 150-300 μ" MATTE TIN ON TERMINATION

**PACKAGING**

1 = TRAY PACKAGING

**CAGE PLATING**

1 = BRIGHT TIN PLATING  
 2 = NICKEL PLATING  
 3 = MATTE TIN PLATING

**MATERIAL:**

CAGE - PRESS FIT:  
 COPPER ALLOY

**PLATING:**

SEE AMPHENOL PART NUMBER  
 CONFIGURATION FOR OPTIONS.

**CONNECTOR - PRESS FIT**

PLASTIC HOUSING:  
 LIQUID CRYSTAL POLYMER (LCP),  
 FLAMMABILITY RATING UL94-0.

**CONTACTS:**

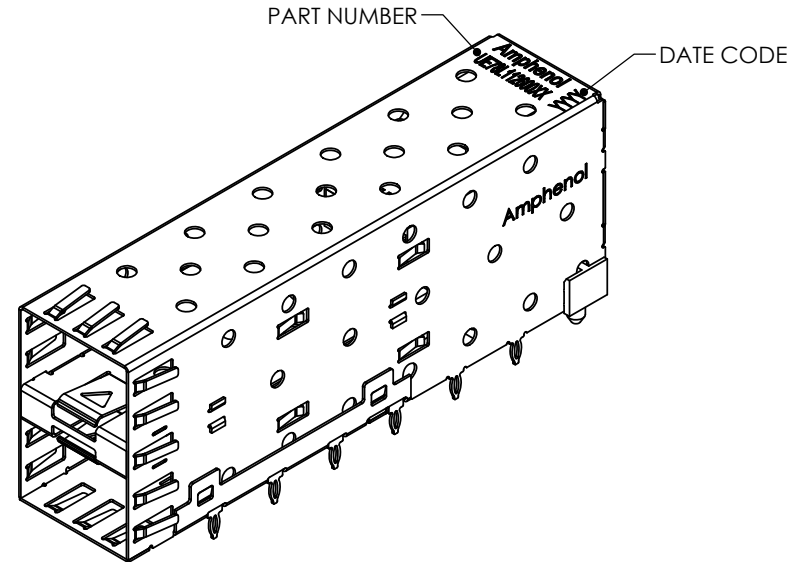
PHOSPHOR BRONZE  
 PLATING OPTION:  
 SEE AMPHENOL PART NUMBER  
 CONFIGURATION FOR OPTIONS.

**PACKAGING:**

TRAY PACKAGING.

**TEMPERATURE RANGE:**

-40°C TO +85°C



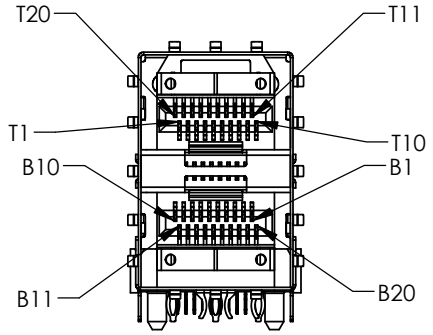
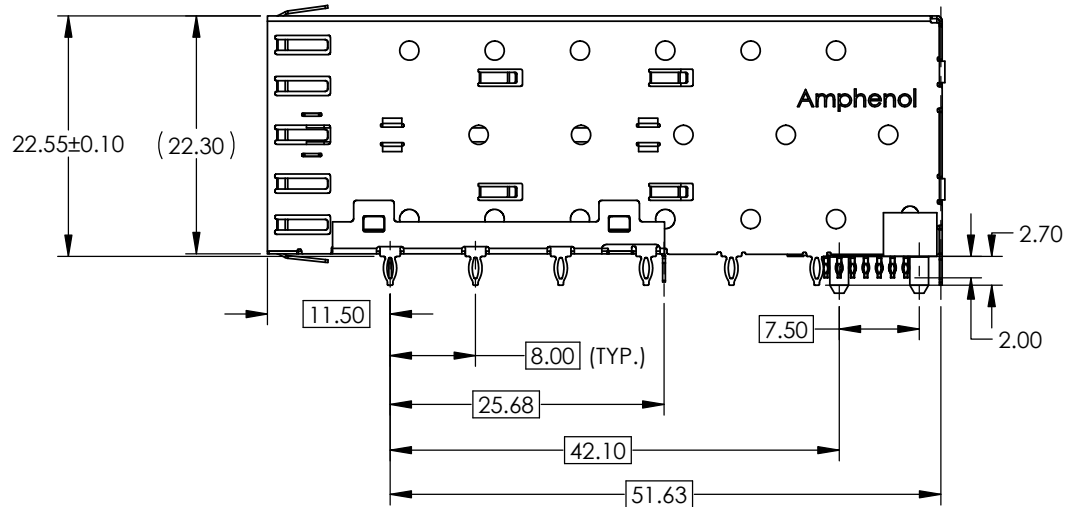
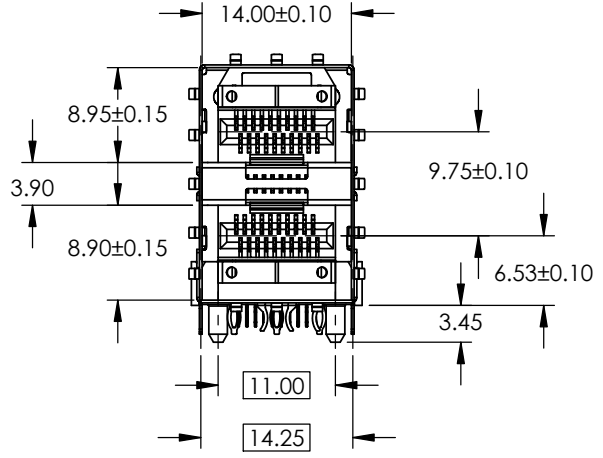
REVISIONS				
REV.	ECN	DESCRIPTION	DATE	APPROVED
A		PROPOSAL	JUL 30/12	J.SI
B		CAGE ADD BRIGHT TIN PLATING	JUN 04/13	J.SI

**DO NOT SCALE DRAWING**

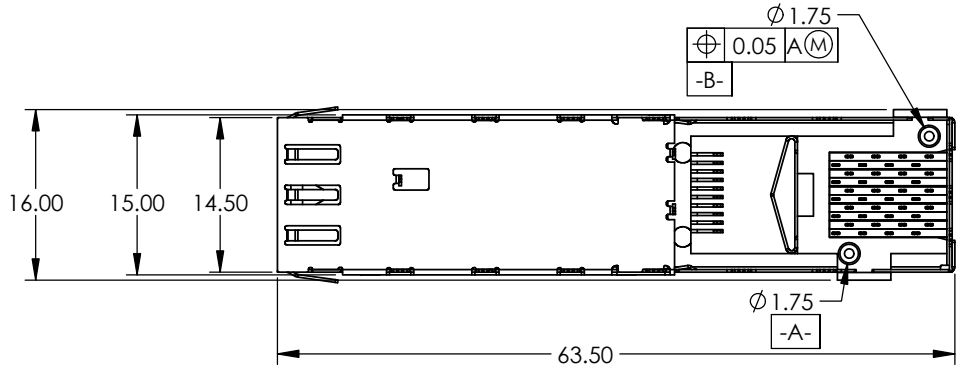
THIS DOCUMENT CONTAINS PROPRIETARY INFORMATION AND SUCH INFORMATION MAY NOT BE DISCLOSED TO OTHERS FOR ANY PURPOSE OR USED FOR MANUFACTURING PURPOSES WITHOUT PERMISSION FROM AMPHENOL CANADA CORP.

UNLESS OTHERWISE SPECIFIED DIMENSIONS ARE IN MILLIMETERS TOLERANCES ARE:		<b>APPROVALS</b>		<b>DATE</b>	<b>Amphenol High Speed Interconnects</b> A Division of Amphenol Corp. www.amphenol-highspeed.com	
DECIMALS	ANGLES	DRAWN	MIKE.H	JUL 30/12	TITLE  2X1 SFP LOW PROFILE COMBO	
X.X ± 0.25	± 1°	DESIGNED				
X.XX ± 0.15		CHECKED	ChigowX	JUL 30/12		
MATERIAL AND FINISH SEE NOTES		QA APP'D				
REF.	X	IE APP'D			SIZE A4	DWG. NO. P-UE78-L1126-00XX1
CODE IDENT. NO.	03554	DWG APP'D	J.SI	JUL 30/12	SCALE 1:2	PROJECT
					SHEET	1 OF 4

REVISIONS				
REV.	ECN	DESCRIPTION	DATE	APPROVED
A		PROPOSAL	JUL 30/12	J.SI
B		CAGE ADD BRIGHT TIN PLATING	JUN 04/13	J.SI



PIN ASSIGNMENT ON MATING AREA

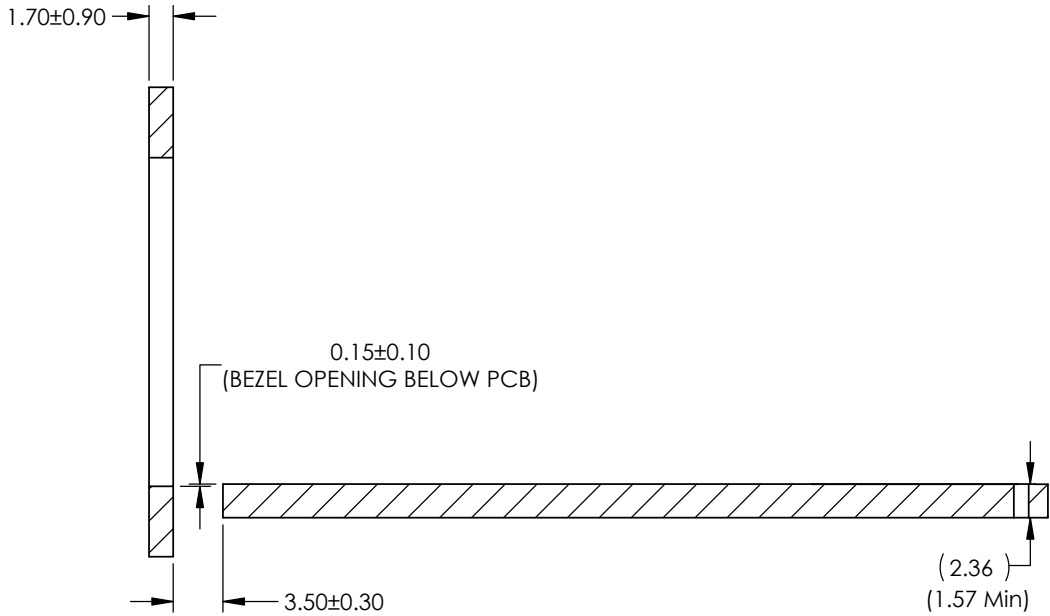
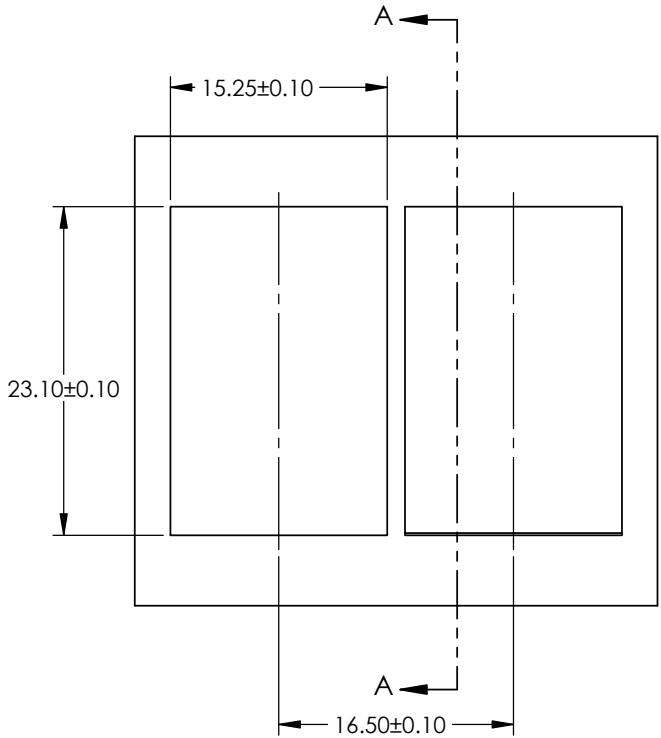


**DO NOT SCALE DRAWING**

THIS DOCUMENT CONTAINS PROPRIETARY INFORMATION AND SUCH INFORMATION MAY NOT BE DISCLOSED TO OTHERS FOR ANY PURPOSE OR USED FOR MANUFACTURING PURPOSES WITHOUT PERMISSION FROM AMPHENOL CANADA CORP.

UNLESS OTHERWISE SPECIFIED DIMENSIONS ARE IN MILLIMETERS TOLERANCES ARE:		<b>APPROVALS</b>		<b>DATE</b>		<b>Amphenol High Speed Interconnects</b> A Division of Amphenol Corp. www.amphenol-highspeed.com	
DECIMALS	ANGLES	DRAWN	MIKE.H	JUL 30/12		TITLE	
X.X ± 0.25	± 1°	DESIGNED				2X1 SFP LOW PROFILE COMBO	
X.XX ± 0.15		CHECKED	ChigowX	JUL 30/12			
MATERIAL AND FINISH	SEE NOTES	QA APP'D				SIZE	DWG. NO.
REF.	X	IE APP'D				A4	P-UE78-L1126-00XX1
CODE IDENT. NO.	03554	DWG APP'D	J.SI	JUL 30/12	SCALE	1:1	PROJECT
						SHEET	2 OF 4

REVISIONS				
REV.	ECN	DESCRIPTION	DATE	APPROVED
A		PROPOSAL	JUL 30/12	J.SI
B		CAGE ADD BRIGHT TIN PLATING	JUN 04/13	J.SI



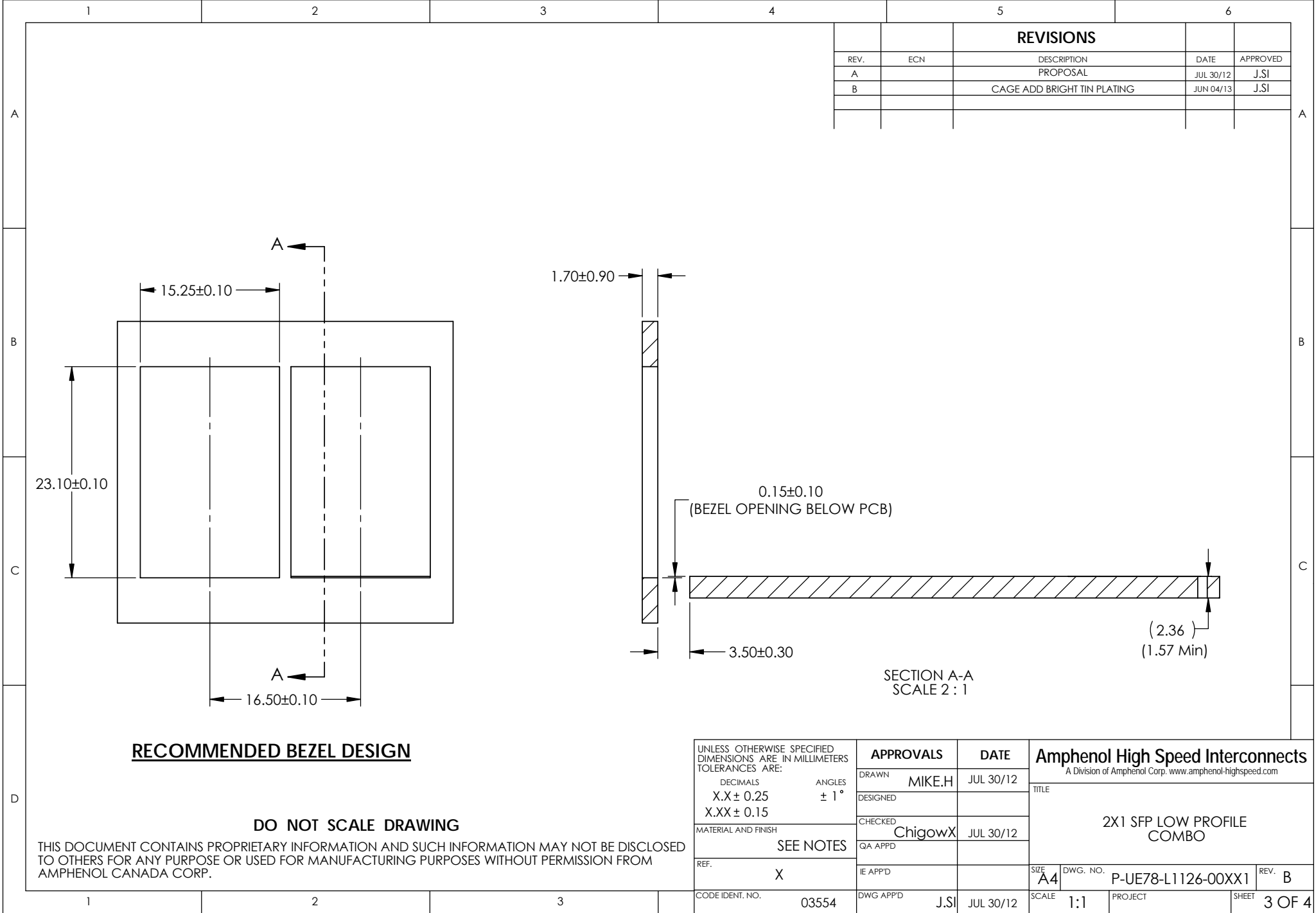
SECTION A-A  
SCALE 2 : 1

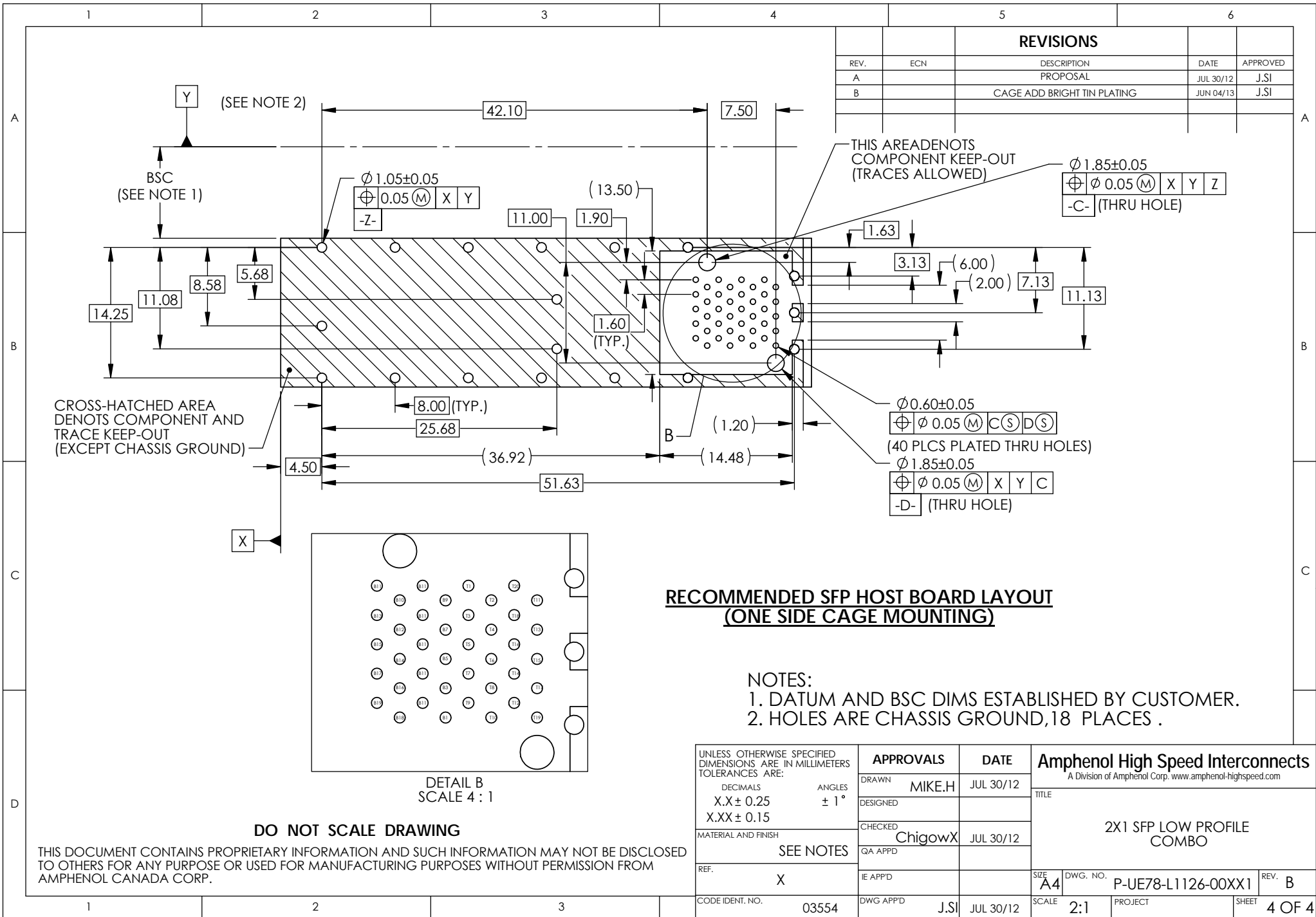
**RECOMMENDED BEZEL DESIGN**

**DO NOT SCALE DRAWING**

THIS DOCUMENT CONTAINS PROPRIETARY INFORMATION AND SUCH INFORMATION MAY NOT BE DISCLOSED TO OTHERS FOR ANY PURPOSE OR USED FOR MANUFACTURING PURPOSES WITHOUT PERMISSION FROM AMPHENOL CANADA CORP.

UNLESS OTHERWISE SPECIFIED DIMENSIONS ARE IN MILLIMETERS TOLERANCES ARE:		<b>APPROVALS</b>		<b>DATE</b>	<b>Amphenol High Speed Interconnects</b> A Division of Amphenol Corp. www.amphenol-highspeed.com	
DECIMALS	ANGLES	DRAWN	MIKE.H	JUL 30/12	TITLE  2X1 SFP LOW PROFILE COMBO	
X.X ± 0.25	± 1°	DESIGNED				
X.XX ± 0.15		CHECKED	ChigowX	JUL 30/12		
MATERIAL AND FINISH		QA APP'D				
SEE NOTES		IE APP'D			SIZE <b>A4</b>	DWG. NO. P-UE78-L1126-00XX1
REF.	X	DWG APP'D	J.SI	JUL 30/12	SCALE 1:1	PROJECT
CODE IDENT. NO.	03554				SHEET	3 OF 4





## X-ON Electronics

Largest Supplier of Electrical and Electronic Components

*Click to view similar products for [I/O Connectors](#) category:*

*Click to view products by [Amphenol](#) manufacturer:*

Other Similar products are found below :

[571763P](#) [58098-0628](#) [61-168618-12P](#) [D38999/20FJ29SB L/C](#) [72.250.1628.2](#) [72.250.2428.2](#) [74720-0505](#) [747680210](#) [76.350.0729.0](#) [76871-1403](#) [FCN-244F080-G/1](#) [FCN-260A9920](#) [FCN-268D024-G/2F#10X-R10](#) [MP-5T180MUNNA-005](#) [MP-5XRJ45UNNB-003](#) [PCS-E50FA](#) [PCS-XE26LKA](#) [PCS-XE26MA+](#) [PCS-XES68MS+](#) [G38A71314B](#) [91-569719-35R](#) [9776-18-6](#) [DX40-50P\(55\)](#) [1571250010](#) [157-22500-3](#) [MS3471L14-19P L/C](#) [171224-6031](#) [1888020-8](#) [91-569786-35H](#) [91-569786-35M](#) [91-644626-35P](#) [172501-4002](#) [172501-6002](#) [FCN-260C008-A/L0](#) [FCN-260C024-AL0](#) [FCN-261Z008](#) [FCN-268D008-G/1K](#) [2000314-1](#) [200331-1](#) [2007498-2](#) [PCR-E28LMDAG1+](#) [PCR-E36FC+](#) [PCS-E28FS+](#) [PCS-XE26SLFD+](#) [PCS-XE26SLFDT+](#) [G38A71214B](#) [HDRA-E68W1LFDTC-SL+](#) [HDR-E14MSG1+](#) [R88A-CNK81S](#) [CRT1-ATT02](#)