

REVISIONS

| REV. | ECN | DESCRIPTION | DATE | APPROVED |
|------|-----|-----------------------------|------------|----------|
| A | | PROPOSAL | SEP.26, 11 | J.SI |
| B | | PROPOSAL | AUG.15, 12 | J.SI |
| C | | OPTION 2 AND OPTION 5 ADDED | AUG.22, 13 | J.SI |

AMPHENOL PART NUMBER CONFIGURATION

UE86 - L 6 6 2 7 - 0 0 X X 1

PRESS FIT CONNECTOR PLATING

- 2 = 0.76 µm MIN. GOLD ON MATING AREA
0.38-2.54 µm MATTE TIN OVER 1.27µm MIN NICKEL ON TERMINATION
- 3 = 0.76 µm MIN. GOLD ON MATING AREA
3.81-7.62 µm MATTE TIN ON TERMINATION
- 5 = 0.38 µm MIN. GOLD ON MATING AREA
0.38-2.54 µm MATTE TIN OVER 1.27µm MIN NICKEL ON TERMINATION
- 6 = 0.38 µm MIN. GOLD ON MATING AREA
3.81-7.62 µm MATTE TIN ON TERMINATION

CAGE PLATING

- 2 = NICKEL PLATING
- 3 = MATTE TIN PLATING

DO NOT SCALE DRAWING

THIS DOCUMENT CONTAINS PROPRIETARY INFORMATION AND SUCH INFORMATION MAY NOT BE DISCLOSED TO OTHERS FOR ANY PURPOSE OR USED FOR MANUFACTURING PURPOSES WITHOUT PERMISSION FROM AMPHENOL CANADA CORP.

MATERIAL: (RoHS COMPLIANT)

- CAGE - PRESS FIT:
COPPER ALLOY
- PLATING:
OPTION 2: NICKEL 2.54 µm MIN.
OPTION 3: MATTE TIN 2.54 µm MIN.
- CONNECTOR - PRESS FIT:
PLASTIC HOUSING:
LCP, FLAMMABILITY RATING UL94-V0.
- CONTACTS:
PHOSPHOR BRONZE
- PLATING OPTION:
SEE AMPHENOL PART NUMBER CONFIGURATION FOR OPTIONS.
- PACKAGING:
TRAY PACKAGING.
- TEMPERATURE RANGE:
-40°C TO +85°C

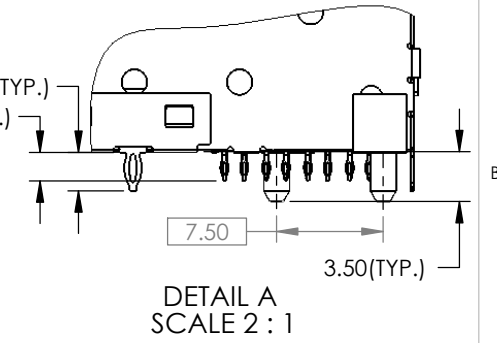
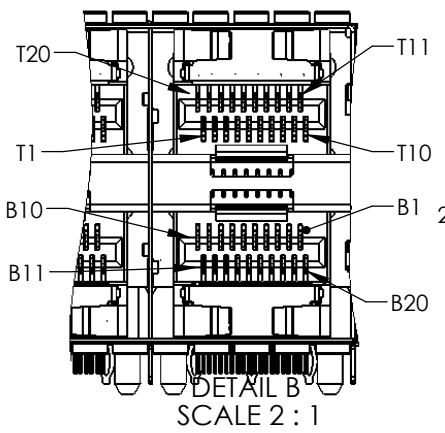
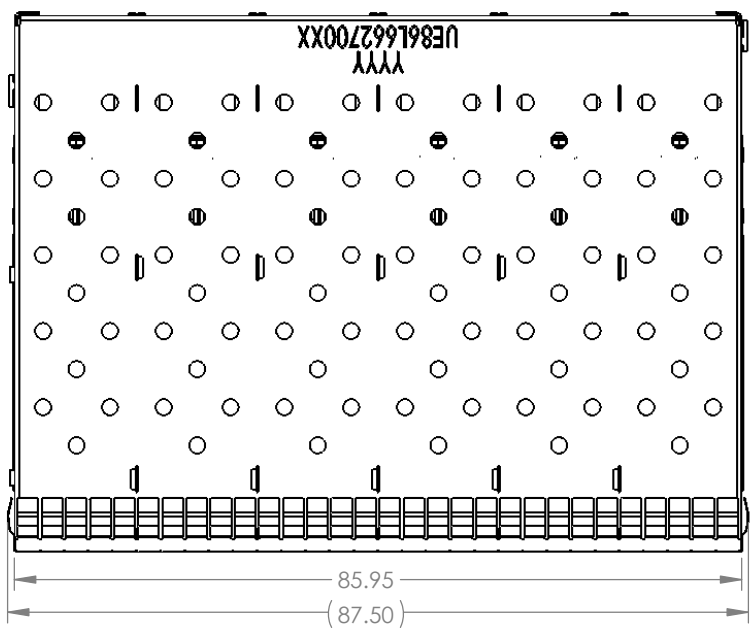
| | | | |
|--|----------------------|-------------|---|
| UNLESS OTHERWISE SPECIFIED DIMENSIONS ARE IN MILLIMETERS TOLERANCES ARE: DECIMALS X.X ± 0.25 X.XX ± 0.15 MATERIAL AND FINISH N/A REF. X CODE IDENT. NO. 03554 | APPROVALS | DATE | Amphenol High Speed Interconnects A Division of Amphenol Corp. www.amphenol-highspeed.com TITLE 2X6 SFP+ EXPRESSPORT LOW PROFILE COMBO SIZE A4 DWG. NO. P-UE86-L6627-00XX1 REV. C SCALE 2:3 PROJECT SHEET 1 OF 5 |
| | DRAWN Grace.L | SEP.26, 11 | |
| | DESIGNED | | |
| | CHECKED J.SI | SEP.26, 11 | |
| | QA APPD | | |
| | IE APPD | | |
| | DWG APPD | | |

1 2 3 4 5 6

REVISIONS

| REV. | ECN | DESCRIPTION | DATE | APPROVED |
|------|-----|-----------------------------|------------|----------|
| A | | PROPOSAL | SEP.26, 11 | J.SI |
| B | | PROPOSAL | AUG.15, 12 | J.SI |
| C | | OPTION 2 AND OPTION 5 ADDED | AUG.22, 13 | J.SI |

A

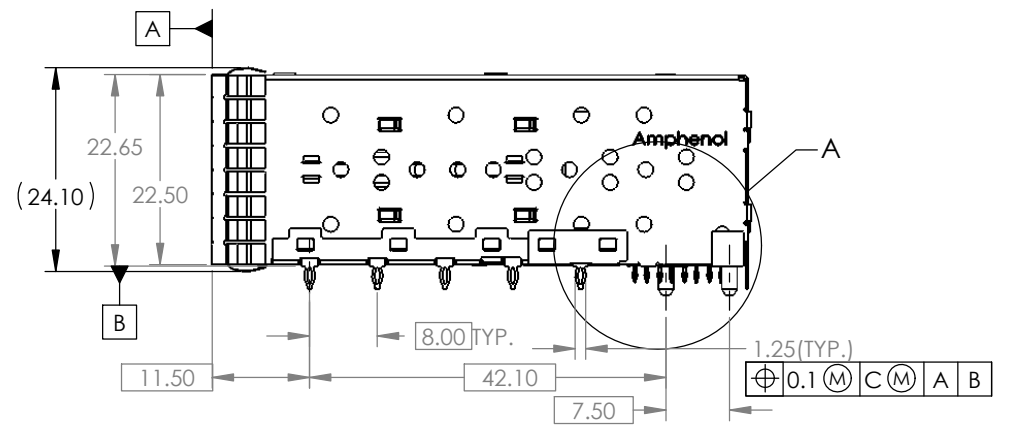
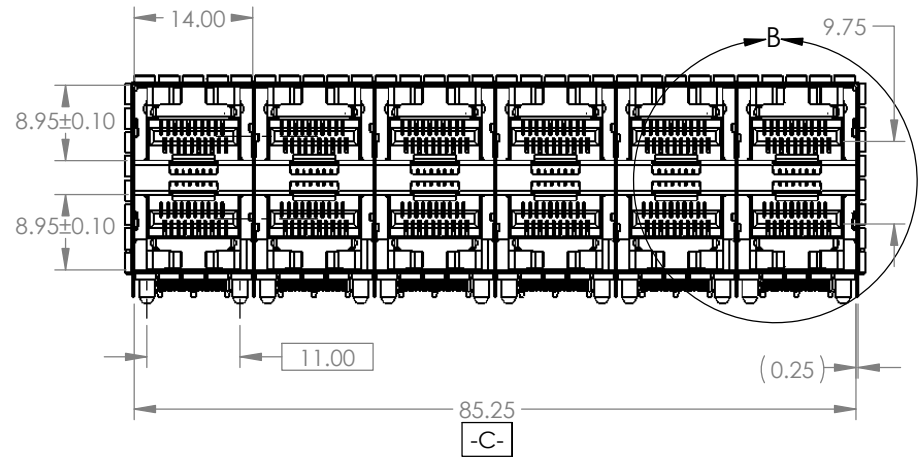


B

B

C

C



D

DO NOT SCALE DRAWING

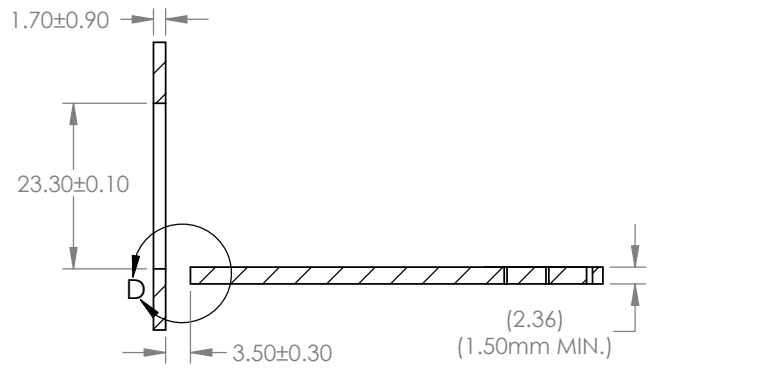
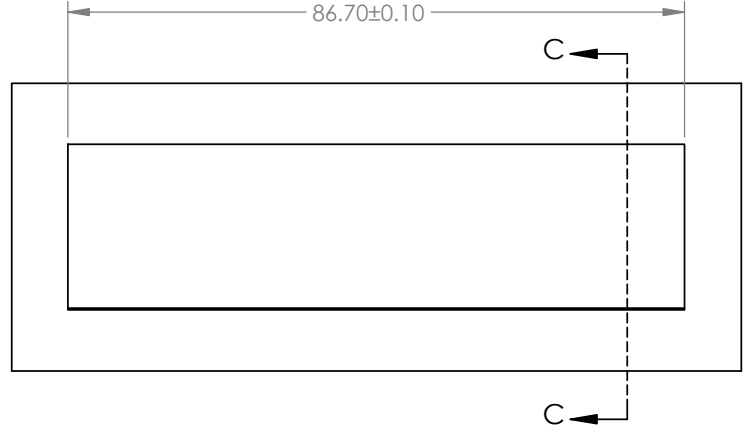
THIS DOCUMENT CONTAINS PROPRIETARY INFORMATION AND SUCH INFORMATION MAY NOT BE DISCLOSED TO OTHERS FOR ANY PURPOSE OR USED FOR MANUFACTURING PURPOSES WITHOUT PERMISSION FROM AMPHENOL CANADA CORP.

| | | | | | | | |
|--|--------|------------------|---------|-------------|---|---|--------|
| UNLESS OTHERWISE SPECIFIED DIMENSIONS ARE IN MILLIMETERS TOLERANCES ARE: | | APPROVALS | | DATE | | Amphenol High Speed Interconnects A Division of Amphenol Corp. www.amphenol-highspeed.com | |
| DECIMALS | ANGLES | DRAWN | Grace.L | SEP.26, 11 | TITLE | | |
| X.X ± 0.25 | ± 1° | DESIGNED | | | 2X6 SFP+ EXPRESSPORT LOW PROFILE COMBO | | |
| X.XX ± 0.15 | | CHECKED | J.SI | SEP.26, 11 | | | |
| MATERIAL AND FINISH | | QA APPD | | | | | |
| REF. | N/A | IE APPD | | | SIZE | DWG. NO. | REV. |
| | X | DWG APPD | | | A4 | P-UE86-L6627-00XX1 | C |
| CODE IDENT. NO. | 03554 | | | | SCALE | PROJECT | SHEET |
| | | | | | 1:1 | | 2 OF 5 |

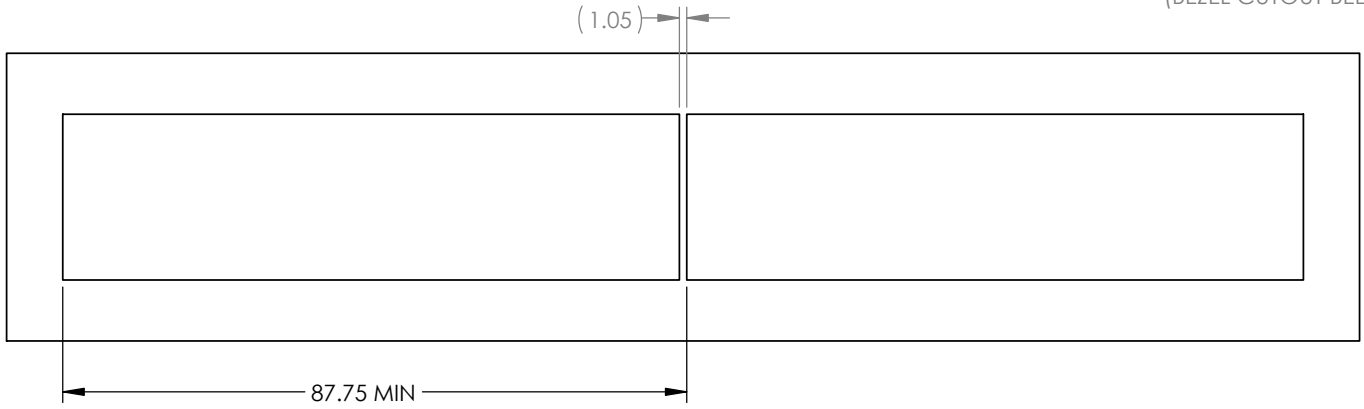
1 2 3

1 2 3 4 5 6

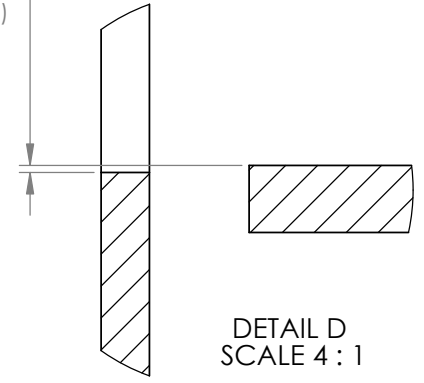
| REVISIONS | | | | |
|-----------|-----|-----------------------------|------------|----------|
| REV. | ECN | DESCRIPTION | DATE | APPROVED |
| A | | PROPOSAL | SEP.26, 11 | J.SI |
| B | | PROPOSAL | AUG.15, 12 | J.SI |
| C | | OPTION 2 AND OPTION 5 ADDED | AUG.22, 13 | J.SI |



SECTION C-C



0.25±0.10
(BEZEL CUTOUT BELOW PCB)



DO NOT SCALE DRAWING

THIS DOCUMENT CONTAINS PROPRIETARY INFORMATION AND SUCH INFORMATION MAY NOT BE DISCLOSED TO OTHERS FOR ANY PURPOSE OR USED FOR MANUFACTURING PURPOSES WITHOUT PERMISSION FROM AMPHENOL CANADA CORP.

| | | | | |
|--|--------|------------------|---------|-------------|
| UNLESS OTHERWISE SPECIFIED DIMENSIONS ARE IN MILLIMETERS TOLERANCES ARE: | | APPROVALS | | DATE |
| DECIMALS | ANGLES | DRAWN | Grace.L | SEP.26, 11 |
| X.X ± 0.25 | ± 1° | DESIGNED | | |
| X.XX ± 0.15 | | CHECKED | J.SI | SEP.26, 11 |
| MATERIAL AND FINISH | N/A | QA APP'D | | |
| REF. | X | IE APP'D | | |
| CODE IDENT. NO. | 03554 | DWG APP'D | | |

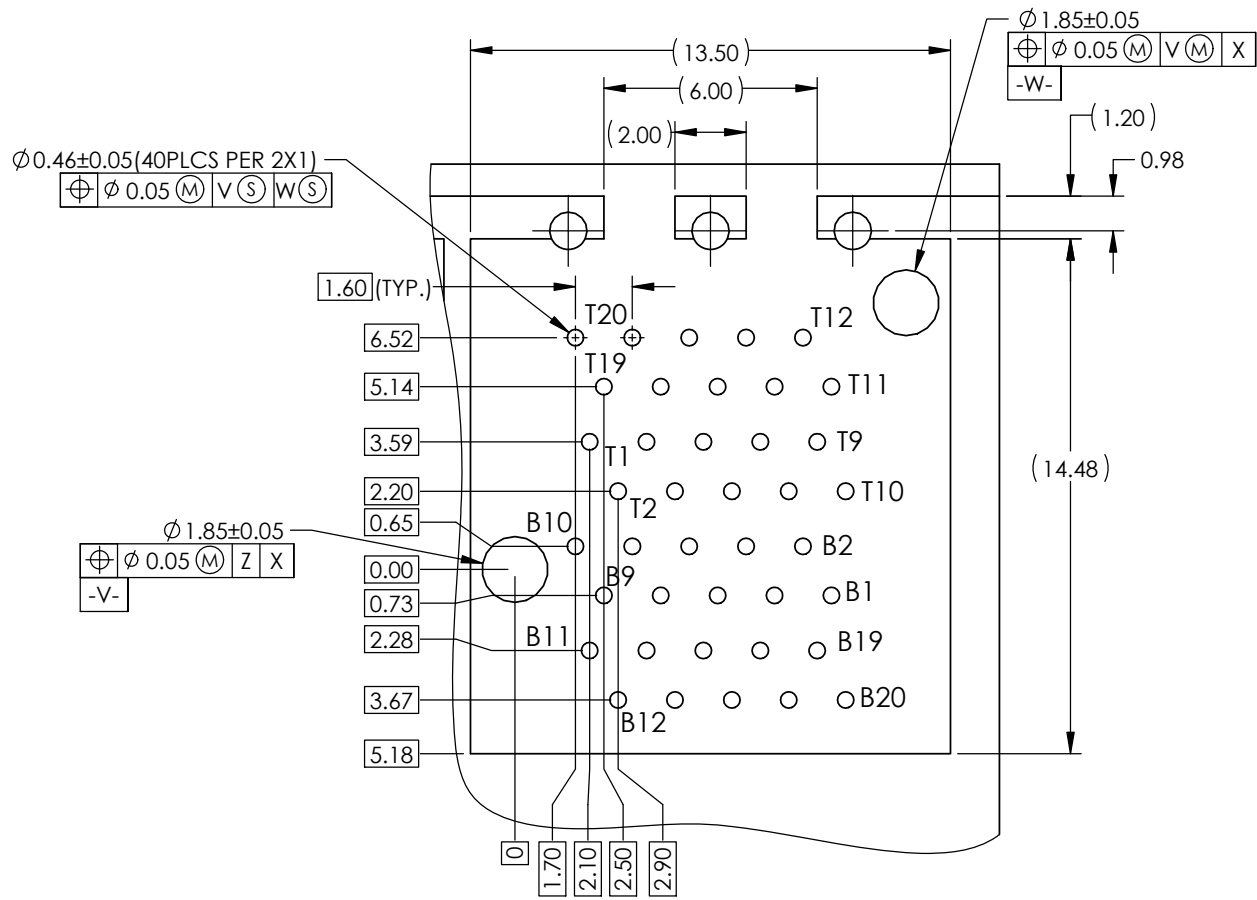
Amphenol High Speed Interconnects
A Division of Amphenol Corp. www.amphenol-highspeed.com

TITLE
**2X6 SFP+ EXPRESSPORT
LOW PROFILE COMBO**

| | | |
|-------|--------------------|--------|
| SIZE | DWG. NO. | REV. |
| A4 | P-UE86-L6627-00XX1 | C |
| SCALE | PROJECT | SHEET |
| 1:1 | | 3 OF 5 |

1 2 3

| REVISIONS | | | | |
|-----------|-----|-----------------------------|------------|----------|
| REV. | ECN | DESCRIPTION | DATE | APPROVED |
| A | | PROPOSAL | SEP.26, 11 | J.SI |
| B | | PROPOSAL | AUG.15, 12 | J.SI |
| C | | OPTION 2 AND OPTION 5 ADDED | AUG.22, 13 | J.SI |



DETAIL E
SCALE 5 : 1

DO NOT SCALE DRAWING

THIS DOCUMENT CONTAINS PROPRIETARY INFORMATION AND SUCH INFORMATION MAY NOT BE DISCLOSED TO OTHERS FOR ANY PURPOSE OR USED FOR MANUFACTURING PURPOSES WITHOUT PERMISSION FROM AMPHENOL CANADA CORP.

| | |
|--|----------------|
| UNLESS OTHERWISE SPECIFIED DIMENSIONS ARE IN MILLIMETERS TOLERANCES ARE: | |
| DECIMALS X.X ± 0.25 X.XX ± 0.15 | ANGLES ± 1° |
| MATERIAL AND FINISH N/A | |
| REF. X | |
| CODE IDENT. NO. 03554 | |

| APPROVALS | DATE |
|---------------|------------|
| DRAWN Grace.L | SEP.26, 11 |
| DESIGNED | |
| CHECKED J.SI | SEP.26, 11 |
| QA APP'D | |
| IE APP'D | |
| DWG APP'D | |

| | |
|---|--------------------------------|
| Amphenol High Speed Interconnects A Division of Amphenol Corp. www.amphenol-highspeed.com | |
| TITLE 2X6 SFP+ EXPRESSPORT LOW PROFILE COMBO | |
| SIZE A4 | DWG. NO. P-UE86-L6627-00XX1 |
| SCALE 3:2 | PROJECT |
| SHEET 5 OF 5 | REV. C |

X-ON Electronics

Largest Supplier of Electrical and Electronic Components

Click to view similar products for [I/O Connectors](#) category:

Click to view products by [Amphenol](#) manufacturer:

Other Similar products are found below :

[571763P](#) [58098-0628](#) [61-168618-12P](#) [D38999/20FJ29SB L/C](#) [72.250.1628.2](#) [72.250.2428.2](#) [74720-0505](#) [747680210](#) [76.350.0729.0](#) [76871-1403](#) [FCN-244F080-G/1](#) [FCN-260A9920](#) [FCN-268D024-G/2F#10X-R10](#) [MP-5T180MUNNA-005](#) [MP-5XRJ45UNNB-003](#) [PCS-E50FA](#) [PCS-XE26LKA](#) [PCS-XE26MA+](#) [PCS-XES68MS+](#) [G38A71314B](#) [91-569719-35R](#) [9776-18-6](#) [DX40-50P\(55\)](#) [1571250010](#) [157-22500-3](#) [MS3471L14-19P L/C](#) [171224-6031](#) [1888020-8](#) [91-569786-35H](#) [91-569786-35M](#) [91-644626-35P](#) [172501-4002](#) [172501-6002](#) [FCN-260C008-A/L0](#) [FCN-260C024-AL0](#) [FCN-261Z008](#) [FCN-268D008-G/1K](#) [2000314-1](#) [200331-1](#) [2007498-2](#) [PCR-E28LMDAG1+](#) [PCR-E36FC+](#) [PCS-E28FS+](#) [PCS-XE26SLFD+](#) [PCS-XE26SLFDT+](#) [G38A71214B](#) [HDRA-E68W1LFDTC-SL+](#) [HDR-E14MSG1+](#) [R88A-CNK81S](#) [CRT1-ATT02](#)