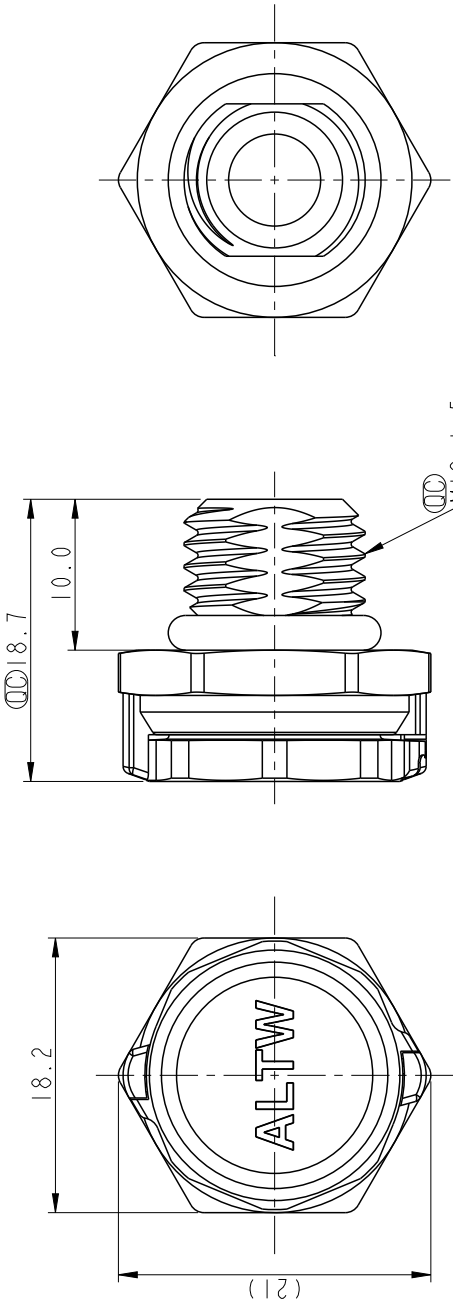
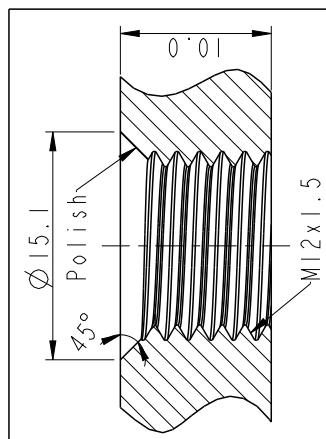
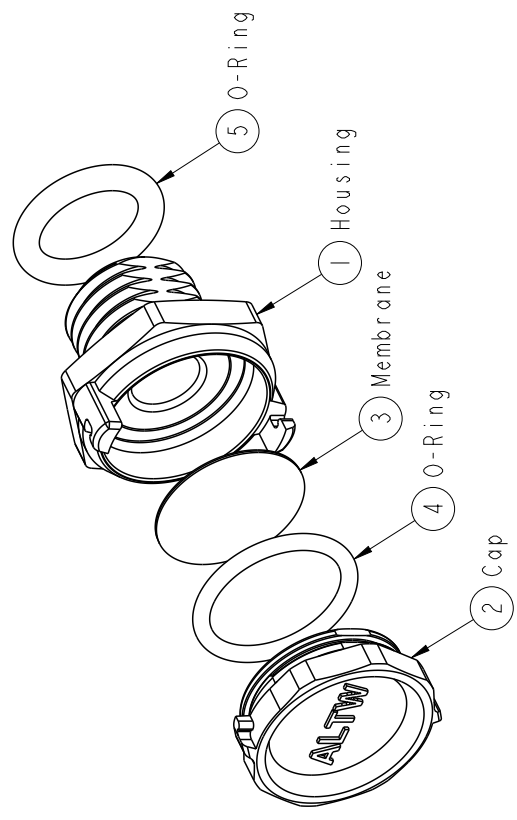


8	7	6	5	4	3	2	1
DESCRIPTION	SIGN	DATE	ECN NO.	REV.			



**ALTW**  
**CONFIDENTIAL**  
**2014-06-10**  
**R&D DEPT.**

Note:  
 \*  $\varnothing$  Important Dimension.  
 \* Waterproof Rate: IP68 (Immersion for 30 minutes at a depth of 2 meter), IP69K  
 \* Housing: Zinc Alloy, Nickel Plated  
 \* Cap: Zinc Alloy, Nickel Plated  
 \* Membrane: PTFE  
 \* O-Ring: Silicone  
 \* Air Permeability: >1760ml/min @70mbar  
 \* Water Entry Pressure: >29KPa



Recommended Panel Cut-Out

UNIT: mm		TITLE	
		VENT Metal-type	
TOLERANCE		SCALE 2:1	
.X		SIZE A4	SHEET 1 OF 1
.XX		MC-REV. A.16	QC: Inspection item
.XXX	REV. A		
ANGLES			
DRAWN BY		ITEM NO	DATE
Gaotong		VENT-BJ005	2014-06-10
CHECKED BY		DWG NO	DATE
Tony		VENT-BJ005	2014-06-10
APPROVED BY		CUSTOMER	DATE
Victor		ALTW	2014-06-10
		6	7
		5	8

**Amphenol LTW**  
**安費諾亮泰企業股份有限公司**

## X-ON Electronics

Largest Supplier of Electrical and Electronic Components

*Click to view similar products for [Circular Metric Connectors](#) category:*

*Click to view products by [Amphenol](#) manufacturer:*

Other Similar products are found below :

[600X518037X](#) [6STD15PCR99B70A](#) [8R4000A16M020](#) [8R5000A16M005](#) [1200910002](#) [1203580030](#) [1200910008](#) [1200910011](#) [1300140094](#)  
[130203-0054](#) [1300140026](#) [1300150099](#) [1-3637-600-5205](#) [1612618](#) [21036836414](#) [8R4006A16M010](#) [1R3006A20M005](#) [41-40011](#) [42-00006](#)  
[42-01015](#) [4-22279-4](#) [4-22281-1](#) [4-22284-9](#) [43-00113](#) [43-01203](#) [41-40013](#) [42-00008](#) [43-00343](#) [43-01026](#) [43-01162](#) [43-01173](#) [43-10000](#)  
[XS3P-M421-2](#) [600X518050X](#) [8R5006A16M020](#) [8R5006A16M005](#) [8R4000A16M010](#) [6-22279-3](#) [1605332](#) [N03FA03144](#) [1300140077](#) [43-](#)  
[16213](#) [43-01338](#) [XS2RD4265](#) [XS2R-D426-1](#) [XS8A-0441](#) [859RD04-103R004](#) [860RD04-113R004](#) [860RD04-213R004](#) [1-213245-2](#)