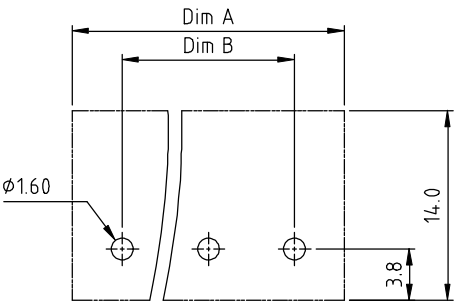
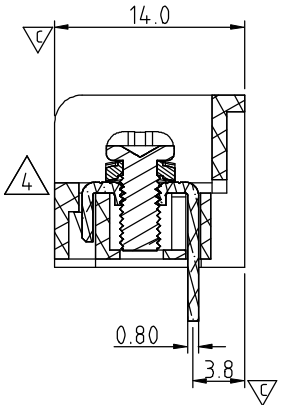
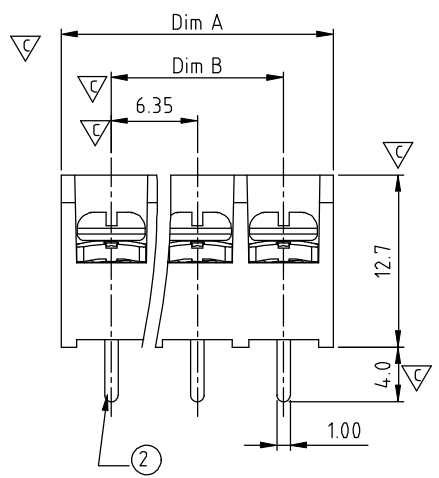
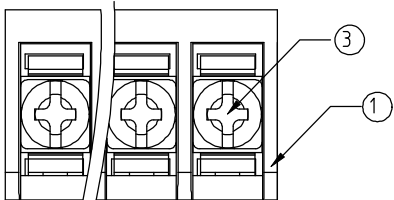


SIGN	DATE	DESCRIPTION	APPROVER
△	10/20'08	Add APPROVAL: : CQC	Kind
△	12/05'12	Change the screw plating specification	Jacky
△	12/05'12	Change the dimensional tolerance	Jacky
△	12/12'13	Add the view	Jacky
△	12/12'13	Change the withstand voltage and current	Jacky

THIS IS CAD DRAWING, DO NOT REVISE MANUALLY!!!



PCB Layout(Bottom View)

N = Number of poles △
 Dim A=Nx6.35+1.0
 Dim B=(N-1)x6.35

Poles	Tol.	Dim A&B
2-5p		±0.20
6-10p		±0.25
11-16p		±0.35
17-24p		±0.40
25-30p		±0.50

MATERIALS ELECTRICAL

△5 RATED VOLTAGE & CURRENT: cULus CQC
 250 V, 10 A / 250 V, 9 A

WITHSTAND VOLTAGE: AC 2000 V/Min

INSULATION RESISTANCE: 1000 MΩ OR MORE AT DC 500 V

OPERATING TEMPERATURE RANG: -40 °C ~ +115 °C

SCREW TORQUE VALUE: 5.3 Lb-In.

WIRE RANGE: 22 - 18 AWG

1) MOLDED PARTS: Thermoplastic, UL 94 V-0 BLACK

2) TERMINAL: BRASS, 0.8t, Tin PLATED

△2 3) TERMINAL SCREWS: STEEL, M3

△1 APPROVAL:

PART NO.:
 Critical dimension: ∇

YK 221 xx 0 x x 00G

NO. OF POLES
 02: 2 POLES
 03: 3 POLES
 04: 4 POLES
 ...
 30: 30 POLES

G: RoHS compliant (lead<4%) In copper Alloy

MARK
 0: "@ " MARK
 1: "ANY " MARK

TERMINAL & SCREW PLATED
 0: TERMINAL & SCREW: G/F
 △1: TERMINAL: G/F, SCREW: Zinc
 2: TERMINAL: Sn, SCREW: G/F
 △3: TERMINAL: Sn, SCREW: Zinc

ANYTEK				CUSTOMER COPY			
ALL RIGHTS RESERVED. REPRODUCTION OR ISSUE TO THIRD PARTIES IN ANY FORM WHATSOEVER IS NOT PERMITTED WITHOUT WRITTEN AUTHORITY FROM THE PROPRIETOR. PROPERTY OF ANYTEK TECHNOLOGY CO., LTD							
TITLE		YK-221 Series		DWG NO.		8YK001-221	
PART NO.		YK221xx0xx00G		CUST NO.			
APPROVED	CHECKED	DESIGNED	DRAWN	Tolerance			
		Jacky	Jacky			UNIT: mm	X. ±0.50
		2013.12.12	2013.12.12			SCALE: NONE	X.X ±0.30
SHEET: 01/01				REV.: G		X.XX ±0.10	X° ±1°

X-ON Electronics

Largest Supplier of Electrical and Electronic Components

Click to view similar products for [Barrier Terminal Blocks](#) category:

Click to view products by [Amphenol](#) manufacturer:

Other Similar products are found below :

[CR151D20104](#) [670A-RZ-15-KT20](#) [6C1N03](#) [6PCR-02](#) [6PCR-02-008](#) [6PCR-05-008](#) [6PCR-08-008](#) [6PCR-09-008](#) [6PCR-13-006](#) [6PCR-15-006](#) [6PCR-21-006](#) [6PCV-06-008](#) [6PCV-09-001](#) [6PCV-10-009](#) [6PCV-15-008](#) [6PCV-20-323](#) [6PCV-30-006](#) [6STR-06-006](#) [6STR-08-006](#) [6STR-12-008](#) [6STR-13-006](#) [6STR-14-008](#) [6STR-16-008](#) [6STR-17-008](#) [6STR-21-008](#) [6STR-25-008](#) [6STR-27-008](#) [6STV-03-006](#) [6STV-03-008](#) [6STV-04-006](#) [6STV-09-006](#) [6STV-10-006](#) [6WWV-12-008](#) [72212603](#) [72504-C-50](#) [72506-C](#) [72507-C-50](#) [73203](#) [75505-C](#) [75505-C-50](#) [75510-C](#) [77010-50](#) [7C1N08](#) [812-GP-3/4ST-09](#) [8-1437402-5](#) [8PCR-06-006](#) [8PCR-11-006](#) [8PCV-02-008](#) [8PCV-04-001](#) [8PCV-04-008](#)