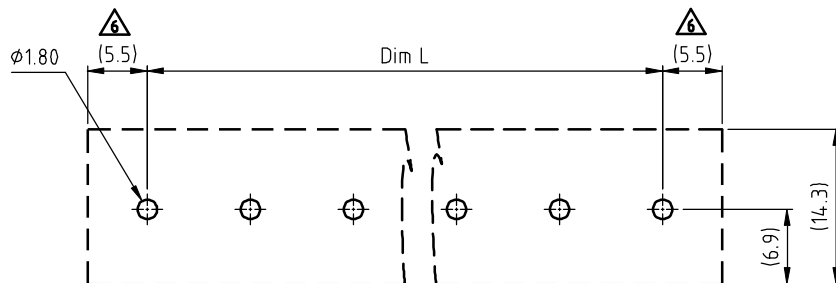
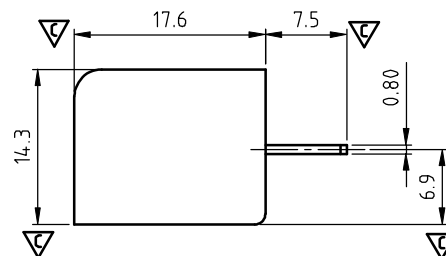
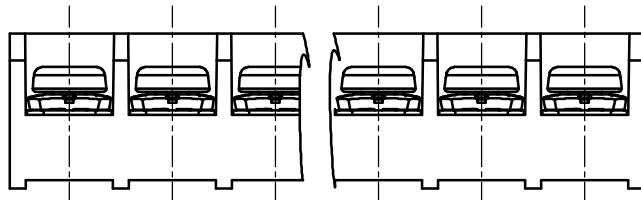


5
 N = Number of poles
 Dim L = N x 9.5 + 1.5
 Dim P = (N - 1) x 9.5

Poles	Tol.	Dim L&P
2-4p		±0.20
5-8p		±0.25
9-16p		±0.35
17-23p		±0.40
24-30p		±0.50



PCB Layout

SIGN	DATE	DESCRIPTION	APPROVER
△	10/20'08	Add APPROVAL: : CQC	Kind
△	4/17'09	Explanation changed	Eris
△	06/15'11	Critical dimension is changed.	Tason
△	06/15'11	The Wire Range is changed from 20-14AWG to 22-14AWG	Tason
△	06/15'11	The tolerance table is changed.	Tason
△	06/16'11	The dimension is changed from (5.6) to (5.5)	Tason
△	11/10'12	Change the screw plating specification	Jacky
△	12/23'13	Change the withatand voltage , current, Screw Torque.	Guoxue

THIS IS CAD DRAWING, DO NOT REVISE MANUALLY!!!

- MATERIALS ELECTRICAL cULus CQC
- △ RATED VOLTAGE & CURRENT: 300 V, 30A / 300V 24A △
 - WITHSTAND VOLTAGE: AC2500V/min △
 - INSULATION RESISTANCE: 1000 MΩ OR MORE AT DC 500 V
 - OPERATING TEMPERATURE RANG: -40 °C ~ +115 °C
 - SCREW TORQUE VALUE: 10.54 Lb-In. / 0.8Nm △
 - △ WIRE RANGE: 22 - 10 AWG / 22-14 AWG △
 - 1) MOLDED PARTS: Thermoplastic, UL 94 V-0 BLACK
 - 2) TERMINAL: BRASS, 0.8t, Tin PLATED
 - △ 3) TERMINAL SCREWS: STEEL, M3.5
 - △ Critical dimension: △
 - △ APPROVAL:

PART NO.:

YK 442 xx 0 x x 00G

NO. OF POLES

- 02: 2 POLES
- 03: 3 POLES
- 04: 4 POLES
- ...
- 30: 30 POLES

TERMINAL & SCREW PLATED 0: "Ⓜ" MARK

- △ 0: TERMINAL & SCREW: G/F 1: "ANY" MARK
- △ 1: TERMINAL: G/F, SCREW: Zinc
- △ 2: TERMINAL: Sn, SCREW: G/F
- △ 3: TERMINAL: Sn, SCREW: Zinc

G:RoHS compliant(lead<4%)
in copper alloy
MARK

ANYTEK				CUSTOMER COPY			
ALL RIGHTS RESERVED. REPRODUCTION OR ISSUE TO THIRD PARTIES IN ANY FORM WHATEVER IS NOT PERMITTED WITHOUT WRITTEN AUTHORITY FROM THE PROPRIETOR. PROPERTY OF ANYTEK TECHNOLOGY CO., LTD							
TITLE	YK-442 Series			DWG NO.	8YK001-442		
PART NO.	YK442x0x00G			CUST NO.			
APPROVED	CHECKED	DESIGNED	DRAWN	Tolerance			
		Guoxue 2014.01.08	Guoxue 2014.01.08		UNIT: mm	X.	±0.50
					SCALE: NONE	X.X	±0.30
				SHEET: 01/01	REV.: I	X.XX	±0.10
						X°	±1°

X-ON Electronics

Largest Supplier of Electrical and Electronic Components

Click to view similar products for [Barrier Terminal Blocks](#) category:

Click to view products by [Amphenol](#) manufacturer:

Other Similar products are found below :

[CR151D20104](#) [670A-RZ-15-KT20](#) [6C1N03](#) [6PCR-02](#) [6PCR-02-008](#) [6PCR-05-008](#) [6PCR-08-008](#) [6PCR-09-008](#) [6PCR-13-006](#) [6PCR-15-006](#) [6PCR-21-006](#) [6PCV-06-008](#) [6PCV-09-001](#) [6PCV-10-009](#) [6PCV-15-008](#) [6PCV-20-323](#) [6PCV-30-006](#) [6STR-06-006](#) [6STR-08-006](#) [6STR-12-008](#) [6STR-13-006](#) [6STR-14-008](#) [6STR-16-008](#) [6STR-17-008](#) [6STR-21-008](#) [6STR-25-008](#) [6STR-27-008](#) [6STV-03-006](#) [6STV-03-008](#) [6STV-04-006](#) [6STV-09-006](#) [6STV-10-006](#) [6WWV-12-008](#) [72212603](#) [72504-C-50](#) [72506-C](#) [72507-C-50](#) [73203](#) [75505-C](#) [75505-C-50](#) [75510-C](#) [77010-50](#) [7C1N08](#) [812-GP-3/4ST-09](#) [8-1437402-5](#) [8PCR-06-006](#) [8PCR-11-006](#) [8PCV-02-008](#) [8PCV-04-001](#) [8PCV-04-008](#)