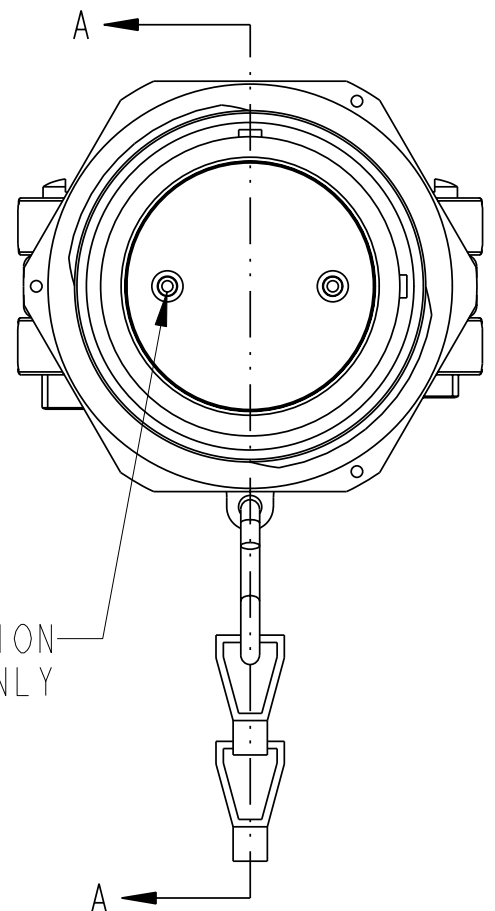
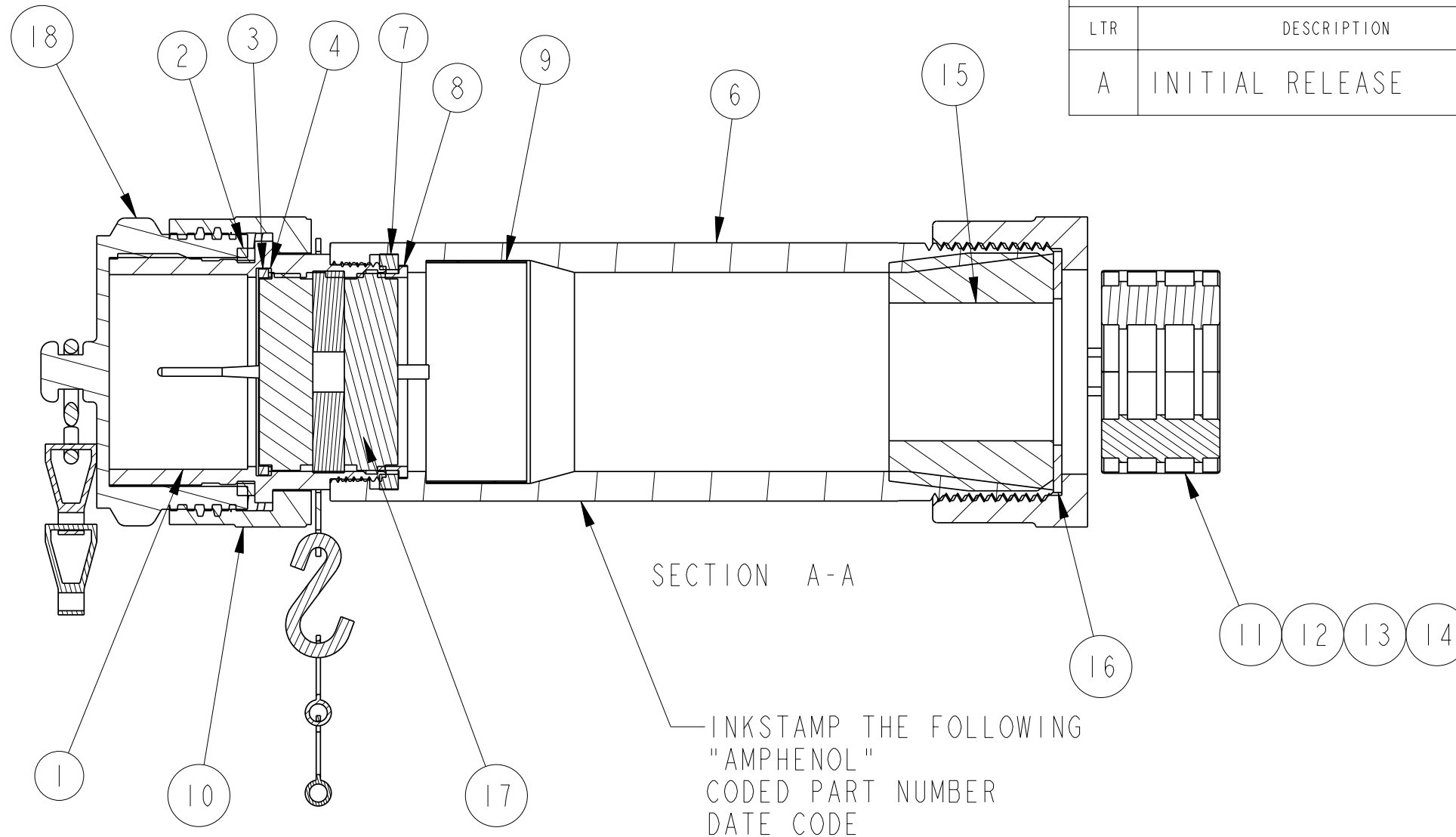


REV. A	SHEET 1 OF 2	ZPEMLJ-( )-( )
REVISIONS		
LTR	DESCRIPTION	DATE
A	INITIAL RELEASE	4-11-06



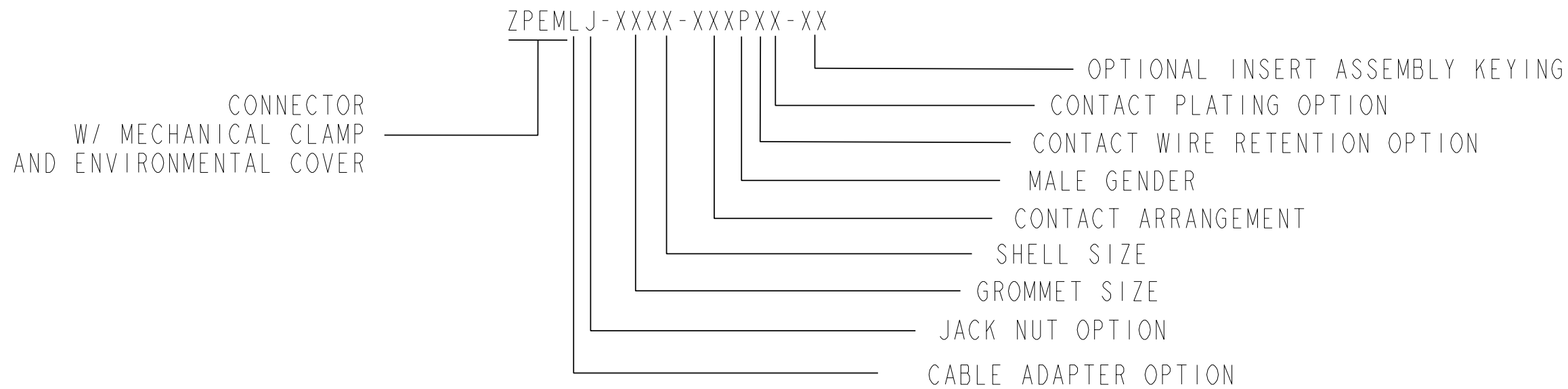
TYPICAL INSERT CONFIGURATION SHOWN FOR REFERENCE ONLY

COVER REMOVED FOR CLARITY



SECTION A-A  
INKSTAMP THE FOLLOWING  
"AMPHENOL"  
CODED PART NUMBER  
DATE CODE

ASSEMBLY CODE LOGIC



POS	QTY	PART NUMBER	DESCRIPTION	NOTE
18	1	ZP-W-55( )-A	ENVIRONMENTAL COVER ASSEMBLY	
17	1	SEE BOM	INSERT ASSEMBLY	3
16	1	ZP-80( )-( )	GLAND WASHER	2
15	1	ZP-63( )-( )	GROMMET	
14	2	50-50039-( )	FILLISTER HEAD SCREW	
13	2	ZP-53( )-12F	TUBULAR NUT	
12	2	ZP-53( )-11A	CABLE CLAMP	
11	1	ZP-53( )-10A	CABLE CLAMP NUT	
10	1	ZP-70( )-30A	COUPLING NUT	
9	1	SEE BOM	INSULATION SLEEVE	
8	1	ZP-82( )-E	ADAPTER WASHER	
7	1	ZP-61( )-C	SEAL ADAPTER	
6	1	ZP-2( )-10A	CABLE ADAPTER	
5	1	ZP-89( )-10E	FRONT SPRING	2
4	1	ZP-89( )-21E	SNAP RING	2
3	1	ZP-66( )-12CB	INNER SEAL	2
2	1	ZP-60( )-C	BARREL SEAL	
1	1	ZP-10( )-( )A	PLUG SHELL	

4. PACKAGE PER PROCESS SHEET. IDENTIFY PACKAGE WITH AMPHENOL ASSEMBLY NUMBER. ALL PARTS SHOWN ASSEMBLED FOR REFERENCE.
3. SEE SEPARATE PART LIST FOR COMPONENT PARTS AND QUANTITIES.
2. ITEMS MAY NOT BE REQUIRED FOR ALL CONFIGURATIONS.
1. BAG AND LABEL CONTACTS SEPARATELY. QUANTITIES SHOWN FOR REFERENCE ONLY.

NOTES:

THE USE OF THIS DOCUMENT IS UNLIMITED. HOWEVER, DOCUMENTS REFERENCED HEREON MAY CONTAIN LIMITED RIGHTS DATA.

UNLESS OTHERWISE SPECIFIED  
LINEAR DIMENSIONS ARE IN INCHES  
TOLERANCES:  
.XXXX = ±.0005 ANGLES = ±2°  
.XXX = ±.010  
.XX = ±.03  
.X = ±.1  
DIM. & TOL. PER ASME Y14.5M;  
DRM PER MIL-DTL-31000;  
OTHER Amphenol Stds. PER 9-3800  
LEGENDS:  
= FLAG NOTE CALL OUT REFERENCE ONLY

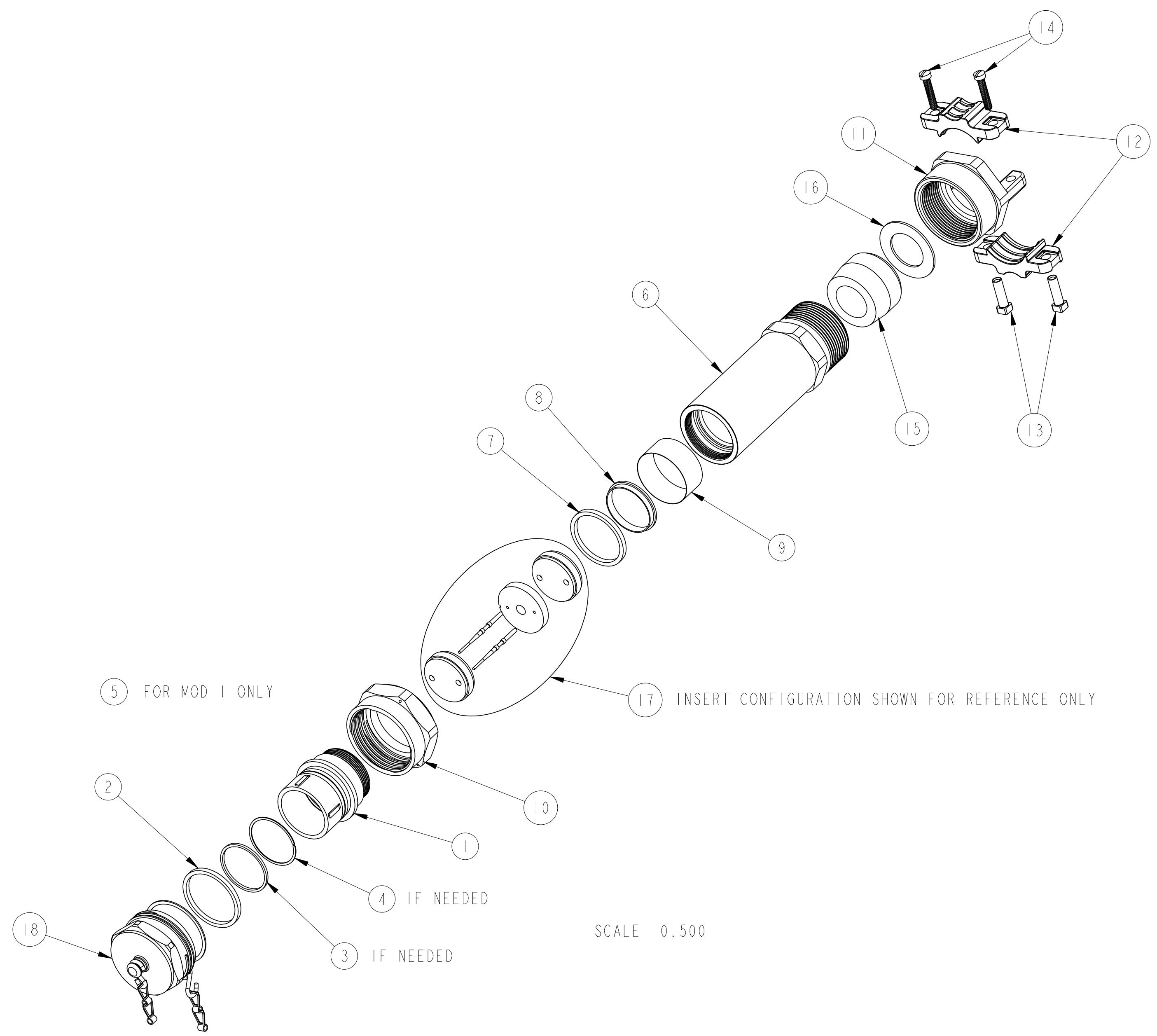
SPECIFICATIONS	PROCESS SPEC.
MATERIAL SPEC.	9-9380 9-3895 9-2811

APPROVALS	DATE
PREPARED BY H. BROOKER ENGINEER IN CHARGE DESIGN MANAGER D. GALLUSSER DESIGN ACTIVITY GROUP C & I	11-Apr-06
THIRD ANGLE PROJECTION	

PARTS LIST  
**AMPHENOL CORPORATION**  
40-60 DELAWARE AVENUE  
SIDNEY, N.Y. 13838  
**STARLINE PLUG ASSEMBLY  
W/ INSERTS**

SIZE	CAGE CODE	DOCUMENT NO.	REV.
C	77820	ZPEMLJ-( )-( )	A
SCALE: 1.0 REF: ZPEMLJ-XX-XXX		SHEET 1 OF 2	

PRO/ENGINEER INFORMATION	NEXT ASSEMBLY
Pro/e Model Used: ZPEMLJ-XXXX-XXXXX.ASSEM Drawing Name: ZPEMLJ-XXXX-XXXXXX-XX	N/A



5 FOR MOD 1 ONLY

17 INSERT CONFIGURATION SHOWN FOR REFERENCE ONLY

4 IF NEEDED

3 IF NEEDED

SCALE 0.500

THE USE OF THIS DOCUMENT IS UNLIMITED.  
 HOWEVER, DOCUMENTS REFERENCED HEREON  
 MAY CONTAIN LIMITED RIGHTS DATA.

RELEASED / Apr . 19 2006, 11:52 AM

SIZE	CAGE CODE	DOCUMENT NO.	REV.
C	77820	ZPEMLJ-( )-( )	A
SCALE: 1.0	REF: ZPEMLJ-XX-XXX	SHEET 2 OF 2	

## X-ON Electronics

Largest Supplier of Electrical and Electronic Components

*Click to view similar products for [Circular MIL Spec Connector](#) category:*

*Click to view products by [Amphenol](#) manufacturer:*

Other Similar products are found below :

[0025-262-542](#) [0025-264-3014](#) [58-570121-04S](#) [0134-202-1200](#) [0134-207-1206](#) [0134-207-1800](#) [0134-207-2207](#) [0134-213-0806](#) [0134-213-1007](#) [0134-213-1009](#) [0134-213-1208](#) [0134-213-1800](#) [0134-213-2209](#) [0025-258-000](#) [015-9516-002](#) [60-042722-19P](#) [0114-201-1278](#)  
[602GB06EG24-61SN](#) [0134-201-1207](#) [0134-201-1806](#) [0134-201-2006](#) [0134-201-2007](#) [0134-201-2010](#) [0134-202-1400](#) [0134-207-0809](#) [0134-207-1208](#) [0134-207-2009](#) [0134-213-1006](#) [6104-207-2302](#) [6104-208-1902](#) [6131-202-19149P](#) [6131-204-21149P](#) [6131-207-13149P](#) [6131-208-13149P](#) [6131-209-17149P](#) [6131-210-11149P](#) [6131-211-19149P](#) [6131-216-19149P](#) [6131-220-25149P](#) [6131-259-11149P](#) [6131-259-21149P](#)  
[6131-259-23149P](#) [6131-263-19149P](#) [6131-265-17149P](#) [6131-265-19149P](#) [CS3102A-20-15P](#) [CS3102A-20-15S](#) [CS3102C18-4P-472](#)  
[CS3106A-20-29P](#) [CS3106A-20-74P](#)