

PK-110 Electrical Test Kit

Three Electrical Testers to Perform Quick and Safe Voltage Tests

Amprobe's PK-110 Electrical Test Kit offers three electrical testers with testing functions suitable for a variety of residential applications. The kit includes the AM-420 Digital Multimeter, ST-102B Socket Tester with GFCI and VP-1000 Non-Contact Voltage Detector. From identifying voltage presence in outlets and switches to confirming proper wiring of regular and GFCI protected outlets, the PK-110 kit boasts all the features needed to perform quick and safe electrical tests.

**AM-420**

← Troubleshoot light bulbs, fuses and detect voltage

**VP-1000**

← Quickly verify voltage presence

**ST-102B**

← Test receptacles and GFCI breakers

PK-110 Features

AM-420 Digital Multimeter

- AC/DC Voltage
- DC Current
- Resistance
- Audible Continuity and Diode Test
- Battery Test (1.5V and 9V)
- Data Hold
- Safety Rated: CAT II 250 V



VP-1000 Non-Contact Voltage Detector

- AC Voltage Detection
- Visual Voltage Presence Alert
- Safety Rated: CAT IV 1000 V



ST-102B Socket Tester with GFCI

- Tests Standard and GFCI Outlets
- Verifies Proper Wiring
- Detects Five Different Wiring Faults
- CSA Listed for Safety



PK-110 Applications

**AM-420** Digital Multimeter

AM-420 Digital Multimeter

Accurately measure voltage up to 250V in receptacles, switches, extension cords and light fixtures

Troubleshoot light bulbs and fuses with the continuity function

Check 1.5V and 9V batteries

Test extension cords and verify proper wiring of an outlet with voltage function

CAT II 250 V safety rating

**VP-1000** Non-Contact Voltage Detector

VP-1000 Non-Contact Voltage Detector

Easily and safely detect voltage presence between 90 and 1000 V. Quickly verify voltage presence in outlets, switches, extension cords, circuit breakers and fuses without disconnecting the electrical system.

Bright LED alerts when voltage is present

Operates as 'always on' using low power circuitry with no buttons for increased safety

Double insulated, CAT IV 1000V safety rating

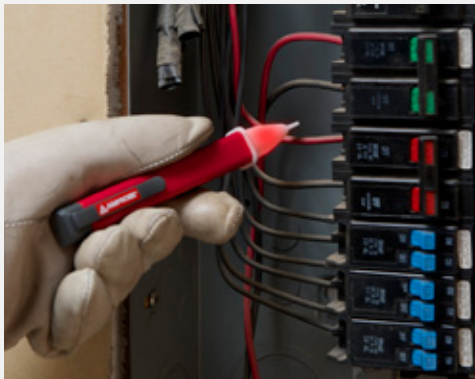
**ST-102B** Socket Tester with GFCI

ST-102B Socket Tester with GFCI

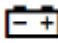
Test receptacle wiring and confirm GFCI sockets are properly wired with push button

Detect five different wiring faults open ground, open neutral, open hot, hot/ground reverse, and hot/neutral reverse

Three illuminated lights on the tester indicate the type of wiring problem



PK-110 Detailed Specifications

Feature	AM-420	Best Accuracy
AC Voltage	200.0 / 250 V	+/- (1.5% rdg + 4 LSD) @ 45 Hz to 400 Hz
DC Voltage	200 mV 2.000 / 20.00 / 200.0 / 250 V	+/- (1.2% rdg + 2 LSD) @ 200 mV to 200 V
DC Current	200.0 μ A 2.000 / 20.00 / 200.0 mA	+/- (1.2% rdg + 5 LSD) @ 200 μ A to 20 mA
Resistance	200.0 Ω 2.000 / 20.00 / 200.0 k Ω 2.000 M Ω	+/- (1.5% rdg + 5 LSD) @ 200 Ω to 200 k Ω
Continuity	Beeps at $\leq 10 \Omega$, off at $> 70 \Omega$	
Diode Test	Open-circuit voltage is around 1.5V. Normal voltage is around 0.5V to 0.8V for silicon PN junction.	
Battery Test	1.5 V, 9 V	+/- (8.0% rdg + 1 LSD)
Data Hold	•	
General Specifications:		
Maximum Display	1999, updates 2 to 3/sec	
Range	Manual-ranging	
Operating Temperature	32°F ~ 104°F (0°C ~ +40°C)	
Relative Humidity	32°F ~ 86°F (0°C ~ +30°C) $\leq 75\%$; 86°F ~ 104°F (+30°C ~ +40°C) $\leq 50\%$	
Operating Altitude	≤ 2000 m	
Storage Temperature	14°F ~ 122°F (-10°C ~ +50°C)	
Electromagnetic Compatibility	In an RF field of 1V/m = Specified accuracy $\pm 5\%$. RF field > 1 V/m is not specified.	
Over-range Indication	" 1 ", "-1" or maximum display reading	
Battery	One 9V alkaline battery (6LF22, 6LR61, MN1604) or equivalent	
Battery Life	Alkaline: 100 hours typical	
Low Battery Indication		
Overvoltage Category	CAT II 250V safety rated	
Safety Compliance	IEC 61010-1, UL 61010-1 2nd Ed. and CAN/CSA C22.2 No. 61010-1-04 Update No.1:2008	
EMC Compliance	IEC 61326-1	
Certification	cCSAus and CE	
Dimensions (L x W x H)	4.5 x 2.6 x 1.6 in (115 x 65 x 40 mm)	
Weight	Approximately 0.61 lb (275 g) with battery installed	

Feature	VP-1000
Operating Voltage Range	90 Vac \rightarrow 1000 Vac, 50/60 Hz
Sensitivity	Lights at approx. 0.39 in (10 mm) distance from a wire carrying 120 Vac
Operating Temperature	32°F to 104°F (0°C to +40°C), $\leq 80\%$ RH
Storage Condition	14°F to 122°F (-10°C to +50°C), $\leq 95\%$ RH
Operating Altitude	2000 meters
Power Supply	Two 1.5 V AAA batteries
Dimensions (L x W x H)	6.10 x 0.96 x 0.85 in (155 x 24.5 x 21.5 mm)
Weight	Approx. 0.11 lb (50 g) with batteries installed
Safety Compliance	IEC 61010-1, UL 61010-1 2nd Ed. and CAN/CSA C22.2 No. 61010-1-04
EMC Compliance	IEC 61326-1
Certification	cCSAus and CE

Feature	ST-102B
Operating Voltage	110 – 125 Vac, 50 – 60 Hz
Wattage	0.3 W
Actuator	Black button
Indicator	Red LED, three lights, neon
Lamp Lens Colors	One red, two amber
Six Conditions Indicated	Open ground, open neutral, open hot, hot/ground reverse, hot/neutral reverse, correct
Safety Compliance	C22.2 No. 160-M1985 / UL 1436 – 4th Edition
Certification	cCSAus

X-ON Electronics

Largest Supplier of Electrical and Electronic Components

Click to view similar products for [Digital Multimeters](#) category:

Click to view products by [Amprobe](#) manufacturer:

Other Similar products are found below :

[6111-517](#) [FS881](#) [C.A 6133 LAUNCH KIT](#) [FLUKE-179-2/IMSK](#) [P 1020 A](#) [P 1070](#) [P 3315](#) [P 3340](#) [KEWMATE 2000A](#) [P 3725](#)
[SEFRAM7202](#) [SEFRAM7220](#) [SEFRAM7221](#) [SEFRAM7303](#) [SEFRAM7223](#) [AMP-220-EUR KIT2](#) [BM785](#) [BM789](#) [BS K-CLIP](#)
[KEW2012RA](#) [FLUKE-110/ERTA](#) [FLUKE 87-V MAX](#) [FLUKE-87V-MAX/E2 KIT](#) [P 2005 A](#) [P 3349](#) [UT161D](#) [DVM821](#) [19290](#) [IBT6K](#)
[AX-573](#) [C.A 5293-BT](#) [1000-219](#) [1001-613](#) [1006-969](#) [30XR](#) [34XR](#) [35XP](#) [TESTO 745](#) [0590 7450](#) [TESTO 760-3](#) [0590 7603](#) [440012](#) [AX-](#)
[155](#) [AX-174](#) [AX-178](#) [AX-18B](#) [AX-190A](#) [AX-503](#) [AX-507B](#) [AX-594](#) [AX-LCR42A](#) [AX-MS811](#)