



Application Note: AS1345 - AN01 – Evaluation Board Description

AS1345

AN01 – Evaluation Board Description

Table of Contents

1	General Description	3
1.1	Kit Content	3
2	Getting Started	3
3	Hardware Description.....	5
4	Board Schematics, Layout and BOM.....	6
5	Ordering Information	9

Revision History

Revision	Date	Owner	Description
1.0	12.12.2012	tka	Initial release
1.1	11.01.2013	tka	corrections

1 General Description

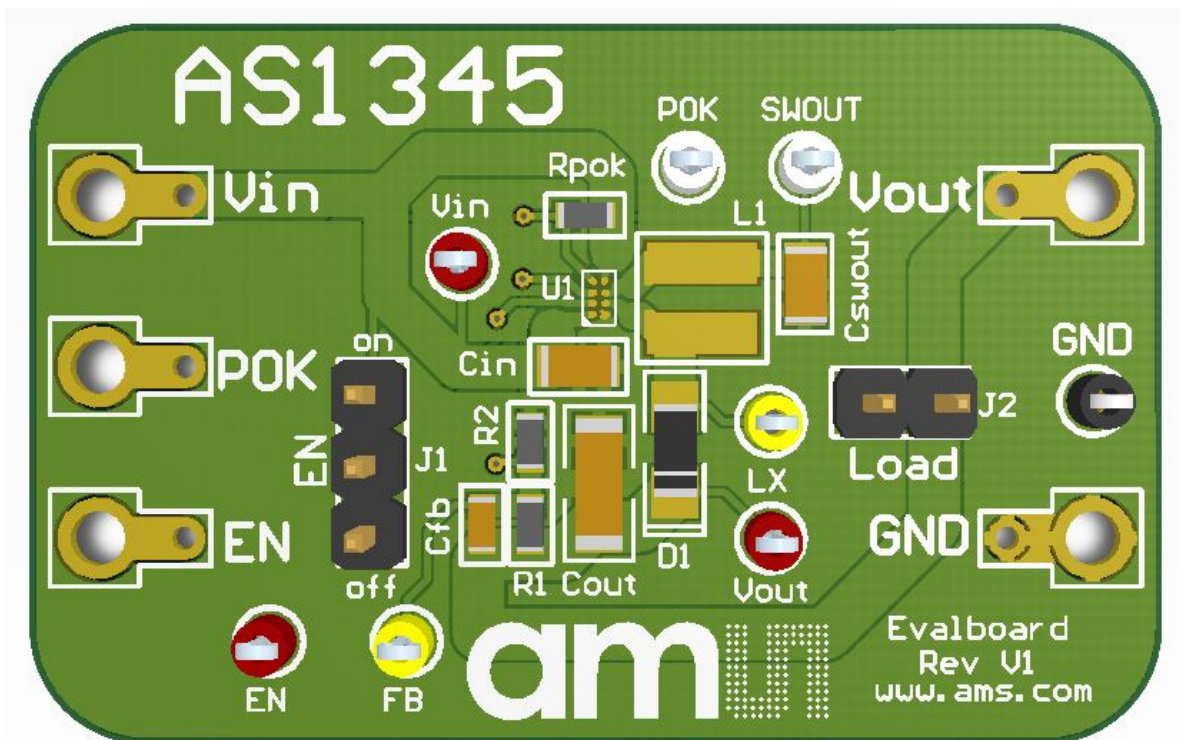
This document describes the AS1345 Evaluation Board.

The AS1345 is a high efficient DCDC Step-up converter, which contains an internal N-channel and an internal P-channel output isolation switch.

The device operates from a 2.9V to 5.0V supply and can boost voltages up to 18V.

1.1 Kit Content

The AS1345 Evaluation Kit includes only the AS1345 Evaluation Board



2 Getting Started

Drive the AS1345 DCDC Step-up converter only with the recommended settings and values as described in the datasheet.

Please check www.ams.com for the latest version.

There are 4 different AS1345 Evaluation Board versions available.

- AS1345A – AD with 100mA peak inductor current and adjustable Vout
- AS1345B – AD with 200mA peak inductor current and adjustable Vout
- AS1345C – AD with 350mA peak inductor current and adjustable Vout
- AS1345D – AD with 500mA peak inductor current and adjustable Vout

All Evaluation Boards have a resistive divider on the PCB to adjust the Vout.

With the equation $V_{out} = V_{REF} * (1+R1/R2)$ it's possible to calculate the right resistor values to get the desired V_{out} . $V_{REF} = 1.25V$

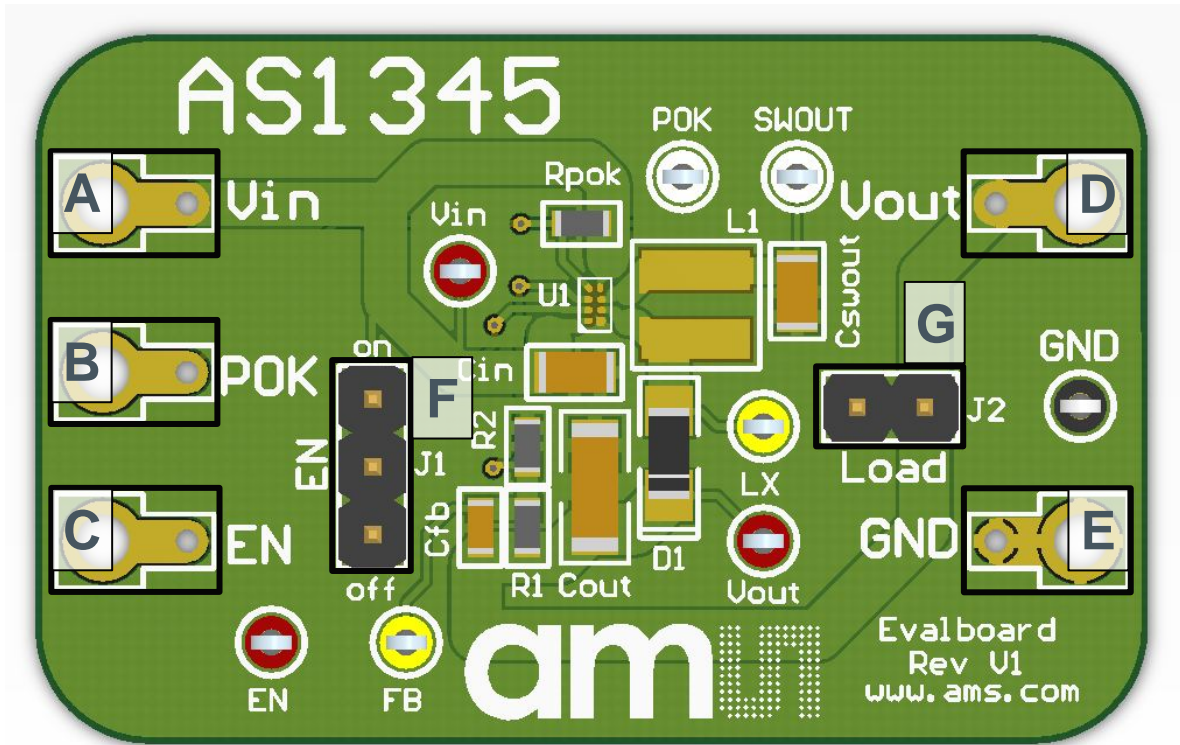
On all Evaluation Boards the output voltage is adjusted to 15V.

- ~ Connect a supply voltage (2.9V to 5.0V) between the connectors "Vin" and "GND".
- ~ Set the "EN" jumper to "on" and the output gives the adjusted 15V.

If there are questions, please contact us.

3 Hardware Description

Figure 1: Evaluation Board Connectors



Label	Name	Designator	Description	Info
A	Vin	BU1	Input Voltage connector	Vin range from 2.9V to 5.0V
B	POK	BU3	POK output connector	POK signal goes high, if the output has reached its nominal value
C	EN	BU2	EN input connector to enable/disable the output	connect an external high/low signal to enable/disable the output, when no "J1" is set
D	Vout	BU4	Output Voltage connector	Vout range from 5.0V to 18V
E	GND	BU5	GND connector	
F	EN	J1	jumper to enable/disable the output	if no external signal is connected to "C", it's possible to enable and disable the output with this jumper "on" → enable "off" → disable
G	Load	J2	Load connector	connector to put a load there

4 Board Schematics, Layout and BOM

The AS1345 Evaluation Board is a 2-layer FR4 board. The main component is the AS1345 with some external passive components, several measurement points and connectors.

Figure 2: AS1345 Evaluation Board Schematic

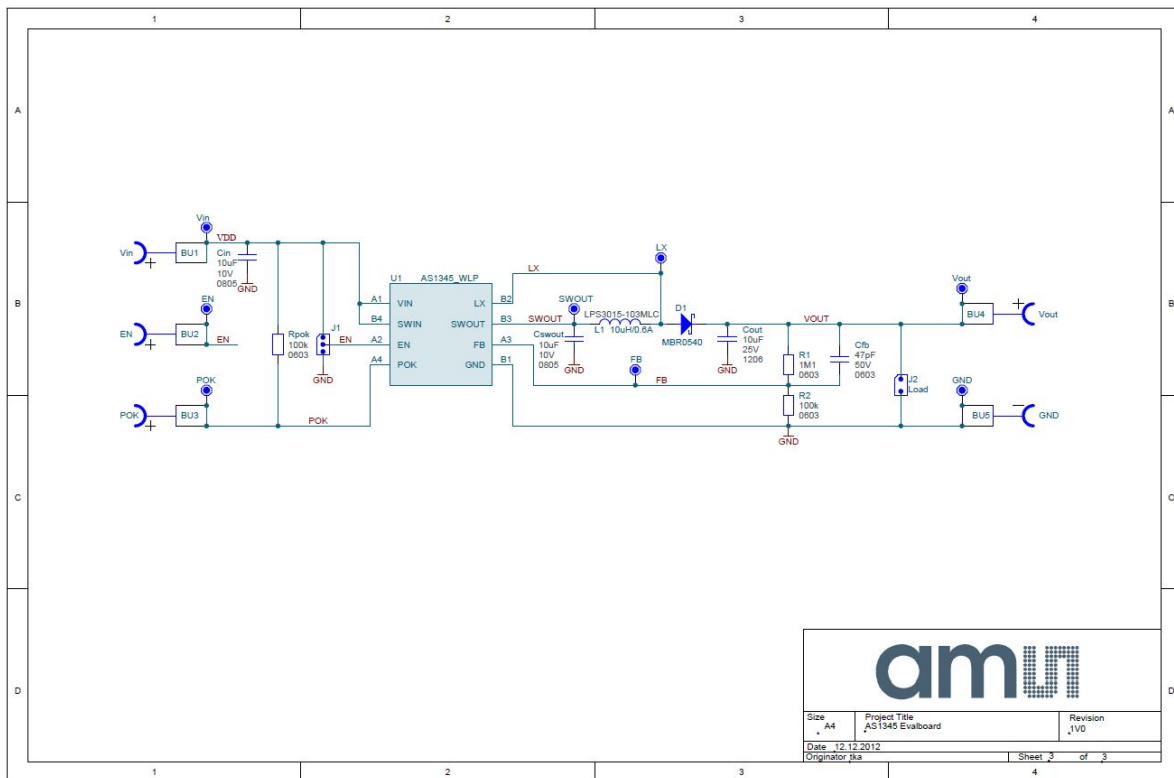


Figure 3: AS1345 Evaluation Board TOP Layer & Silkscreen

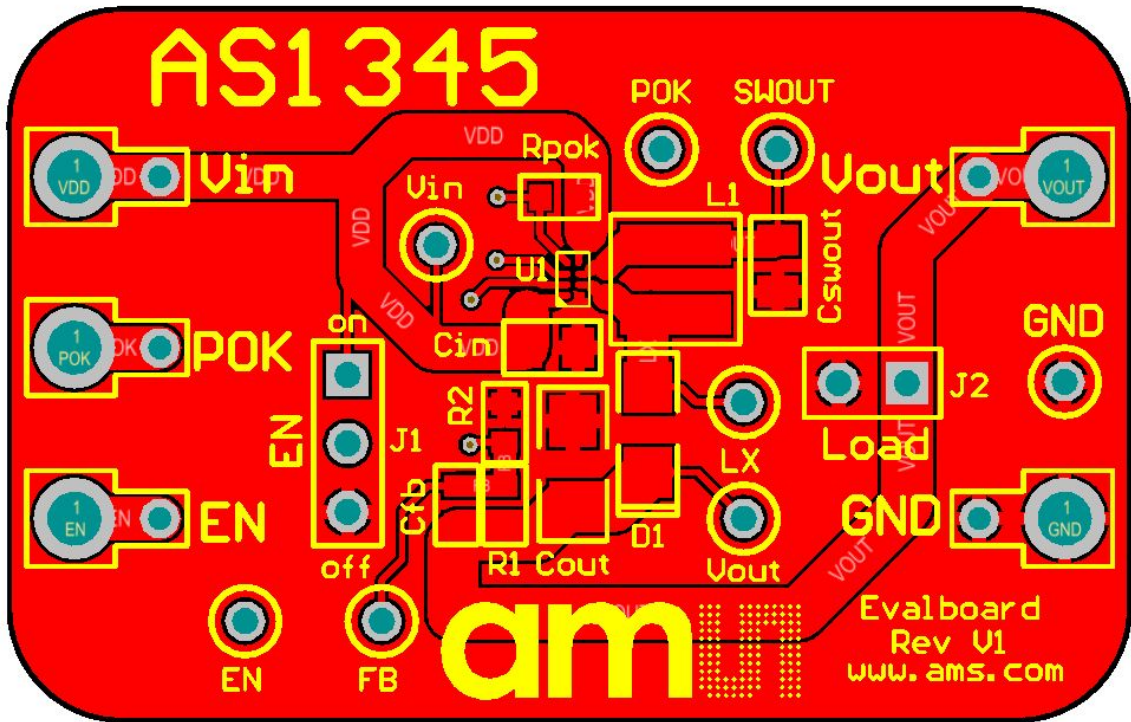


Figure 4: AS1345 Evaluation Board BOTTOM Layer

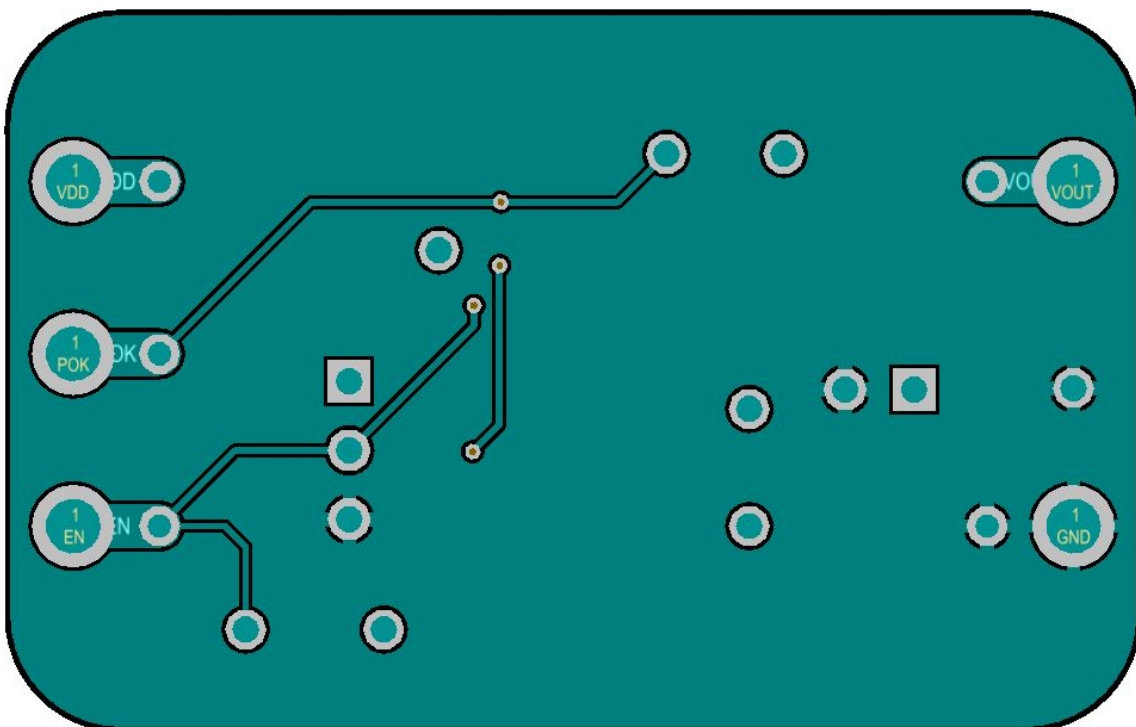


Figure 5: AS1345 Evaluation Board BOM

Bill of Materials			AS1345_Evalboard_WLP_1V0			
Company:		ams AG				
Originator:		tka				
PCB Name:		AS1345_Evalboard_WLP_1V0				
PCB Version:		1V0				
Report Date:		12.12.2012				
#	Designator	Comment	Part Description	Manufacturer	Manufacturer Part Number	Quantity
1	C1b	47p	MURATA - GRM1885C1H470JA01D - KONDENSATOR, 0603, 47PF, 50V	MURATA	GRM1885C1H470JA01D	1
2	Cin, Cswout	10u	MURATA - GRM21BR71A106KE51L - CAPACITOR, 0805, X7R, 10V, 10UF	MURATA	GRM21BR71A106KE51L	2
3	Cout	10u	MURATA - GRM31CR61E106KA12L - CAPACITOR, 1206, X5R, 25V, 10UF	MURATA	GRM31CR61E106KA12L	1
4	D1	MBR0540	FAIRCHILD SEMICONDUCTOR - MBR0540 - SCHOTTKY RECTIFIER, 500mA, 40V, SOD-123	FAIRCHILD SEMICONDUCTOR	MBR0540	1
5	J1, J2	Jumper3_THMD, Load	FISCHER ELEKTRONIK - SL1112436G - STIFTLISTE, 36POL, 2.54MM PASTER	FISCHER ELEKTRONIK	SL1112436G	2
6	L1	10uH/0.6A	LPS3015-103MLC	Coilcraft	LPS3015-103MLC	1
7	R1	R_0603	MULTICOMP - MC0.063W06031%1M10 - RESISTOR, 0603, 1M1, 1%	MULTICOMP	MC0.063W06031%1M10	1
8	R2, Rpok	100k, R_0603	MULTICOMP - MC 0.063W 0603 1% 100K - WIDERSTAND, 0603 100K	MULTICOMP	MC 0.063W 0603 1% 100K	2
9	TP1, TP3, TP4	EN, Vin, Vout	VERO - 20-313137 - LÖTSTÜTZPUNKT ROT BIS MAX 475 100ST	VERO	20-313137	3
10	TP2, TP5, TP6, TP7	FB, LX, POK, SWOUT	VERO - 20-313139 - LÖTSTÜTZPUNKT WEISS BIS MAX 475 100ST	VERO	20-313139	4
11	TP8	GND	VERO - 20-2137 - LÖTSTÜTZPUNKT SCHWARZ BIS MAX 475 100ST	VERO	20-2137	1
12	U1	AS1345_WLP	AS1345w-BwLT-AD	ams AG	AS1345w-BwLT-AD	1
Approved			Notes			20

5 Ordering Information

The AS1345 Evaluation Kit can be ordered via www.ams.com.

Figure 6: Ordering Information

Ordering Code	Description
AS1345A-AD	AS1345A-BWLT-AD Evalboard Rev1.0
AS1345B-AD	AS1345B-BWLT-AD Evalboard Rev1.0
AS1345C-AD	AS1345C-BWLT-AD Evalboard Rev1.0
AS1345D-AD	AS1345D-BWLT-AD Evalboard Rev1.0

about ams

ams develops and manufactures high performance analog semiconductors that solve its customers' most challenging problems with innovative solutions. ams' products are aimed at applications which require extreme precision, accuracy, dynamic range, sensitivity, and ultra-low power consumption. ams' product range includes sensors, sensor interfaces, power management ICs and wireless ICs for customers in the consumer, industrial, medical, mobile communications and automotive markets.

With headquarters in Austria, ams employs over 1,200 people globally and serves more than 6,500 customers worldwide. ams is listed on the SIX Swiss stock exchange (ticker symbol: AMS). More information about ams can be found at www.ams.com.

Copyright

Copyright © 1997-2012, ams AG, Tobelbader Strasse 30, 8141 Unterpremstaetten, Austria-Europe. Trademarks Registered ®. All rights reserved. The material herein may not be reproduced, adapted, merged, translated, stored, or used without the prior written consent of the copyright owner.

All products and companies mentioned are trademarks or registered trademarks of their respective companies.

Disclaimer

Devices sold by ams AG are covered by the warranty and patent indemnification provisions appearing in its Term of Sale. ams AG makes no warranty, express, statutory, implied, or by description regarding the information set forth herein or regarding the freedom of the described devices from patent infringement. ams AG reserves the right to change specifications and prices at any time and without notice. Therefore, prior to designing this product into a system, it is necessary to check with ams AG for current information.

This product is intended for use in normal commercial applications. Applications requiring extended temperature range, unusual environmental requirements, or high reliability applications, such as military, medical life-support or lifesustaining equipment are specifically not recommended without additional processing by ams AG for each application. For shipments of less than 100 parts the manufacturing flow might show deviations from the standard production flow, such as test flow or test location.

The information furnished here by ams AG is believed to be correct and accurate. However, ams AG shall not be liable to recipient or any third party for any damages, including but not limited to personal injury, property damage, loss of profits, loss of use, interruption of business or indirect, special, incidental or consequential damages, of any kind, in connection with or arising out of the furnishing, performance or use of the technical data herein. No obligation or liability to recipient or any third party shall arise or flow out of ams AG rendering of technical or other services.

X-ON Electronics

Largest Supplier of Electrical and Electronic Components

Click to view similar products for [Power Management IC Development Tools](#) category:

Click to view products by [ams](#) manufacturer:

Other Similar products are found below :

[EVAL-ADM1168LQEBZ](#) [EVB-EP5348UI](#) [MIC23451-AAAYFL EV](#) [MIC5281YMME EV](#) [DA9063-EVAL](#) [ADP122-3.3-EVALZ](#) [ADP130-0.8-EVALZ](#) [ADP130-1.2-EVALZ](#) [ADP130-1.5-EVALZ](#) [ADP130-1.8-EVALZ](#) [ADP1714-3.3-EVALZ](#) [ADP1716-2.5-EVALZ](#) [ADP1740-1.5-EVALZ](#) [ADP1752-1.5-EVALZ](#) [ADP1828LC-EVALZ](#) [ADP1870-0.3-EVALZ](#) [ADP1871-0.6-EVALZ](#) [ADP1873-0.6-EVALZ](#) [ADP1874-0.3-EVALZ](#) [ADP1882-1.0-EVALZ](#) [ADP199CB-EVALZ](#) [ADP2102-1.25-EVALZ](#) [ADP2102-1.875EVALZ](#) [ADP2102-1.8-EVALZ](#) [ADP2102-2-EVALZ](#) [ADP2102-3-EVALZ](#) [ADP2102-4-EVALZ](#) [ADP2106-1.8-EVALZ](#) [ADP2147CB-110EVALZ](#) [AS3606-DB](#) [BQ24010EVM](#) [BQ24075TEVM](#) [BQ24155EVM](#) [BQ24157EVM-697](#) [BQ24160EVM-742](#) [BQ24296MEVM-655](#) [BQ25010EVM](#) [BQ3055EVM](#) [NCV891330PD50GEVB](#) [ISLUSBI2CKIT1Z](#) [LM2744EVAL](#) [LM2854EVAL](#) [LM3658SD-AEV/NOPB](#) [LM3658SDEV/NOPB](#) [LM3691TL-1.8EV/NOPB](#) [LM4510SDEV/NOPB](#) [LM5033SD-EVAL](#) [LP38512TS-1.8EV](#) [EVAL-ADM1186-1MBZ](#) [EVAL-ADM1186-2MBZ](#)